

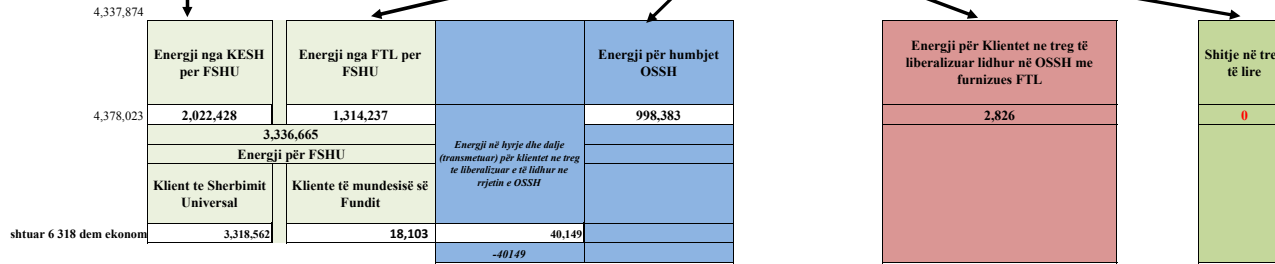
**BILANCI ENERJITIK 8-MUJORI 2020 (MWh)**

Prodhimi neto publik		Prodhuar nga PPE në rrjetin e OSSH			Prodhuar nga PPE në rrjetin e OST		Prodhues të pavarur					Prodhim neto vendas
Prodhimi Neto KESH sha		Neto (Selit)	HC.Priv/Kon ne Rrjetin e OSSH për FTL	FOTOVOLTAIK	HC.Priv/Kon ne Rrjetin e OST për FTL	Neto Ashta	Neto Banja	Neto Mogleca	Neto KURUM	H/C Peshqesh	H/C Fangu	
2,067,849		20,402	427,657	23,471	452,534	118,661	96,646	78,008	219,905	50,541	122,526	3,678,200

<i>Ballanca e shkembimeve në Interkoneksion.</i>	45,421
<i>Ballanca e shkembimeve të brendpa OST,FTL,OSHEE) Group.</i>	
<i>Shitur OST per Humbje+konsum vetiak</i>	
<i>Konsumuar nga Tec Vlora</i>	
<i>Devjime nga Programi i Interkoneksionit</i>	
<i>Energji per sherbime</i>	
<b>Energji per FSHU nga KESH sha</b>	<b>2,022,428</b>

Energji e siguruar nga FTL					
Blerje Neto (Selit)	Blerje HC.Priv/Kon ne Rrjetin e OSSH për FTL	Blerje FOTOVOLTAIK	Blerje HC.Priv/Kon ne Rrjetin e OST për FTL	Blerje Neto Ashta	Blerje ne Treg të Liberalizuar nga FTL
20,402	427,657	23,471	452,534	118,661	1,279,039
<b>2,321,764</b>					

<b>Ballanca në interkoneksion (marrje)</b>
<b>1,318,809</b>



<b>4,997,009</b>
------------------

**KONSUMI VENDAS**

Konsumi i klientëve Tarifore	3,318,562
Shitur klienteve tarifore si dem ekonomik	6,318
Konsumi i klientëve të furnizuar si FMF	18,103
Konsumi i Klientëve që përdorin rrjetin për energjinë e blerë ne treg të liberalizuar	40,149
Energji për Klientet ne treg të liberalizuar lidhur në OSSH me furnizues FTL	2,826
Konsumi për mbulimin e humbjeve ne Shperndarje	998,383
Konsumuar nga Klientet e lidhur në OST (plus TEC Ballsh)	495,784
Konsumuar nga OST (humbje +nevoja vetiake)	116,884
<b>KONSUMI TOTAL 2020 (6-mujori)</b>	<b>4,997,009</b>

<b>Konsumi total vendas</b>
<b>4,997,009</b>

*Burimi: OST sha; KESH sha; OSSH sha; FSHU sha; FTL sha; (OSHEE Group sha)*

TABELA ME TE DHENA PERIODIKE MUJORE TE FTL,FSHU DHE OSSH Sha 8-Mujori 2020											
			Janar	Shkurt	Mars	Prill	Maj	Qershor		8-mujori 2020	
1	ENERGJI TOTALE E HYRE NE RRJETIN E OSSH sha (pa energjine me ngritje nga rrjeti OSS)	1=2+3	708,611	607,803	589,581	489,236	464,183	463,789	527,801	533,336	4,262,551
2	Energji e transmetuar nepermjet OST ne rrjetin e OSSH-se	2	653,339	537,547	478,468	398,877	418,034	433,213	506,883	517,902	3,944,262
3	Energji e prodhuar dhe injektuar direkt ne rrjetin e OSSH-se	3=4-5	40,951	47,848	62,368	54,044	46,149	30,576	20,919	15,433	318,288
4	Energji e prodhuar dhe e levruar ne rrjetin e shperndarjes	4	55,273	70,256	111,113	90,360	69,740	36,096	22,853	15,840	471,531
5	Energjia e ngitur ne rrjetin e transmetimit nga centralet e lidhura ne rrjetin e OSSH-se	5	14,322	22,408	48,745	36,316	23,591	5,520	1,934	407	153,243
6	Energji e shitur nga KESH sha per FSHU sha	6	298,517	222,669	179,765	139,303	151,107	293,359	390,954	346,754	2,022,428
7	Energji vetem per tu transmetuar tek klientet ne treg te liberalizuar (ne rrjetin e OSSH)	7	3,955	4,002	4,673	4,440	5,052	5,428	6,296	6,304	40,149
8	ENERGJI TOTALE QE KA KALUAR NE RRJETIN E OSSH-se	1+5	722,933	630,211	638,325	525,553	487,774	469,309	529,735	533,743	4,415,793
9	HUMBJE TOTALE NE RRJETIN E OSSH (MWh)	9=10+11+12	204,031	136,188	181,037	91,410	93,153	87,527	104,326	100,710	998,382
10	Humbje Teknike njesite e TL (MWh)	10	10,341	9,871	8,313	7,626	7,321	8,174	9,218	8,259	69,122
11	Humbje Teknike ne Zona (MWh)	11	123,691	79,330	94,944	52,054	53,333	48,807	60,791	59,547	572,496
12	Humbje JoTeknike ne Zona (MWh)	12	69,999	46,987	77,781	31,730	32,499	30,546	34,317	32,904	356,764
13	HUMBJE TOTALE NE RRJETIN E OSSH (%)	13=9/8	28.22%	21.61%	28.36%	17.39%	19.10%	18.65%	19.69%	18.87%	22.00%
14	Humbje Teknike njesite e TL (%)	14	1.43%	1.57%	1.30%	1.45%	1.50%	1.74%	1.74%	1.55%	1.58%
15	Humbje Teknike ne Zona (%)	15	17.37%	12.80%	15.08%	10.06%	11.11%	10.59%	11.68%	11.34%	12.82%
16	Humbje JoTeknike ne Zona (%)	16	9.68%	7.46%	12.19%	6.04%	6.66%	6.51%	6.48%	6.16%	7.86%
17	ENERGJI NE HYRJE NGA FTL (OSHEE sha)	17=18+19+20	406,140	381,133	405,142	345,494	308,025	165,003	130,552	180,277	2,321,764
18	Blere nga Prodhimi i PPE ne rrjetin e OSSH	18	55,273	70,256	111,113	90,360	69,740	36,096	22,853	15,840	471,531
19	Blere nga Prodhimi i PPE ne rrjetin e OST	19	71,387	89,969	129,540	94,582	83,882	43,227	32,555	26,053	571,194
20	Blere ne Treg te Liberalizuar nga FTL sha	20	279,480	220,908	164,489	160,552	154,402	85,680	75,144	138,384	1,279,039
21	ENERGJI NE DALJE E SHITUR NGA FTL (OSHEE sha)	21=22+23+24+25	406,140	381,133	405,142	345,494	308,025	165,003	130,552	180,277	2,321,764
22	Energji nga FTL per FSHU	22	202,108	244,945	223,896	253,634	214,501	77,095	25,548	78,827	1,320,554
23	Energji nga FTL per humbjet OSSH	23	204,031	136,188	181,037	91,410	93,153	87,527	104,327	100,710	998,383
24	Energji e furnizuar nga FTL per Kliente ne treg te liberalizuar (ne rrjetin e OSSH)	24	0	0	209	449	371	381	677	740	2,827
25	Energji e shitur nga FTL ne treg te liberalizuar	25	0	0	0	0	0	0	0	0	0
26	ENERGJI NE HYRJE PER FSHU (OSHEE sha)	26=27+28	502,548	358,856	360,803	230,713	244,260	380,886	495,281	447,464	3,020,811
27	Energji Faktike nga KESH sha per FSHU sha	27	298,517	222,669	179,765	139,303	151,107	293,359	390,954	346,754	2,022,428
28	Energji nga FTL per FSHU	28	204,031	136,188	181,037	91,410	93,153	87,527	104,327	100,710	998,383
29	ENERGJI NE DALJE PER FSHU (OSHEE sha)	29=30+35	500,625	467,614	403,661	392,937	365,608	369,792	415,058	421,367	3,336,662
30	Shitur Klienteve te Sherbimit Universal	30=31+32+33+34	497,445	464,527	401,013	391,364	363,546	368,211	413,111	419,342	3,318,560
31	Shitur klienteve Familjare	31	313,571	280,249	260,080	265,501	223,020	203,415	219,144	219,301	1,984,282
32	Shitur klienteve Private	32	131,013	133,411	95,158	88,395	101,181	122,736	147,869	153,378	973,140
33	Shitur klienteve Buxhetore	33	25,815	24,374	20,098	16,053	14,969	15,339	16,738	17,348	150,735
34	Shitur klienteve JoBuxhetore	34	27,047	26,494	25,677	21,414	24,375	26,721	29,360	29,315	210,403
35	Shitur Klienteve te mundesis se Fundit	35=36+37	3,180	3,086	2,648	1,573	2,062	1,581	1,947	2,025	18,102
36	Shitur Klienteve FMF Privat (MWh)	36	1,598	1,445	772	38	543	243	240	339	5,218
37	Shitur Klienteve FMF JoBuxhetore(MWh)	37	1,582	1,641	1,876	1,535	1,518	1,338	1,707	1,686	12,884
38	Faturuar muaji Parardhes FSHU (000/leke)	38	6,251,767	6,508,770	6,106,516	5,129,481	5,029,219	4,885,187	4,884,726	5,588,061	44,383,728
39	Arketimet e muajit aktual FSHU (000/leke)	39=40+41+42	5,712,421	5,959,484	4,729,831	5,478,206	5,118,635	4,992,372	4,727,688	5,327,794	42,046,432
40	Arketuar per faturat korrente te vitit aktual	40	4,142,703	4,209,902	3,198,616	3,163,075	3,096,733	3,044,357	3,076,629	3,589,573	27,521,589
41	Arketuar per faturat e tjera te vitit aktual	41	16,409	5,865	1,100,725	2,039,191	1,759,725	1,589,254	1,368,065	1,469,319	9,348,552
42	Arketuar per faturat e tjera te viteve te kaluara	42	1,553,310	1,743,716	430,490	275,941	262,177	358,761	282,994	268,902	5,176,291
43	Arketimet e muajit aktual FSHU (%)	43=44+45+46	91.4%	91.6%	77.5%	106.8%	101.8%	102.2%	96.8%	95.3%	94.7%
44	Arketuar per faturat korrente te vitit aktual (%)	44	66.3%	64.7%	52.4%	61.7%	61.6%	62.3%	63.0%	64.2%	62.0%
45	Arketuar per faturat e tjera te vitit aktual (%)	45	0.3%	0.1%	18.0%	39.8%	35.0%	32.5%	28.0%	26.3%	21.1%
46	Arketuar per faturat e tjera te viteve te kaluara (%)	46	24.8%	26.8%	7.0%	5.4%	5.2%	7.3%	5.8%	4.8%	11.7%
47	Faturuar muaji Raportues FSHU (000/leke)	47	6,508,770	6,106,516	5,129,481	5,029,219	4,885,187	4,884,726	4,884,726	5,588,061	43,016,687
48	Nr. Konsumatoreve gjithsej FSHU (Nr.)	48	1,250,420	1,250,686	1,250,414	1,319,867	1,264,519	1,272,735	1,273,062	1,270,496	10,152,199
49	Fatura te emetuara me lexim konsumi (Nr.)	49	976,930	975,096	972,270	984,207	958,463	975,469	998,268	1,009,055	7,849,758
50	Sasia e energjise se faturuar me lexim konsumi (MWh)	50	-	-	-	-	-	-	-	-	-
51	Fatura te emetuara me lexim "0" (Nr.)	51	284,467	285,907	285,854	335,660	284,804	297,266	258,190	246,085	2,278,233
52	Nr.Faturave te emetuara pa lexim (energji e pa matur) (Nr.)	52	-	-	-	-	-	-	-	-	-
53	Sasia e energjise se faturuar si energji e pamatur (MWh)	53	-	-	-	-	-	-	-	-	-
54	Nr.Faturave te emetuara pa lexim (dem ekonomik) (Nr.)	54	-	-	-	-	-	208	265	146	619
55	Shuma e faturuar si dem ekonomik (000/leke)	55	-	-	-	-	-	661	1,444	4,213	6,318
56	Nr.Faturave per te cilat eshte arketuar kamat vonese (Nr.)	56	395,146	371,921	419,418	565,820	391,679	412,695	430,554	413,572	3,400,805
57	Vlera e Kamat vonesave te arketuara (000/leke)	57	86,550	74,301	76,764	53,075	64,173	61,873	68,534	67,813	553,083

**Burimi: OSSH sha; FSHU sha; FTL sha; (OSHEE Group sha)**

<b>BILANCI ENERGJITIK I FTL sha, FSHU SHA DHE OSSH sha PER 86-MUJORIN 2020 (MWh)</b>			
1	ENERGJI TOTALE E HYRE NE RRJETIN E OSSH-se	2+3+7.6	4,384,341
2	Energji e shitur nga KESH sha per FSHU sha		2,022,428
3	<b>ENERGJI NE MARRJE NGA FTL (OSHEE Group sha)</b>	3.1+3.2+3.3	<b>2,321,764</b>
3.1	Blere nga Prodhimi i PPE në rrjetin e OSSH		471,530
3.2	Blere nga Prodhimi i PPE në rrjetin e OST		571,195
3.3	Blere ne Treg të Liberalizuar nga FTL sha		1,279,039
4	<b>ENERGJI NE DHENJE FTL (OSHEE Group sha)</b>	4.1+4.2+4.3+4.4	<b>2,315,446</b>
4.1	Energji nga FTL per FSHU		1,314,237
4.2	Energji nga FTL për humbjet OSSH		998,383
4.3	Energji e furnizuar nga FTL për Kliente ne treg të liberalizuar (ne rrjetin e OSSH)		2,826
4.4	Energji e shitur nga FTL ne treg te liberalizuar		0
5	<b>ENERGJI NE MARRJE NGA FSHU (OSHEE Group sha)</b>	2+4.1	<b>3,342,982</b>
5.1	Energji Faktike nga KESH sha per FSHU sha	2	2,022,428
5.2	Energji nga FTL per FSHU	4.1	1,320,554
6	<b>ENERGJI NE DHENJE FTL (OSHEE Group sha)</b>	6.1 deri 6.14	<b>2,504,210</b>
6.1	Shitur Klienteve te Sherbimit Universal		2,486,107
6.11	Shitur klienteve Familiare		1,984,283
6.12	Shitur klienteve Private		973,140
6.13	Shitur klienteve Buxhetore		150,735
6.14	Shitur klienteve JoBuxhetore		210,403
6.2	Shitur Klienteve të mundesisë së Fundit		18,103
6.21	Shitur Klienteve FMF Privat (MWh)		5,218
6.22	Shitur Klienteve FMF JoBuxhetore(MWh)		12,885
7	<b>ENERGJI QE KALON NE RRJETIN E OSSH-se</b>	4.2+2+4.1+7.4+7.5+7.6	<b>4,537,585</b>
7.1	Energji nga FTL për humbjet OSSH		998,383
7.2	Energji Faktike nga KESH sha per FSHU sha		2,022,428
7.3	Energji nga FTL per FSHU		1,314,237
7.31	Energji nga FTL per demin ekonomik		6,318
7.4	Energjia e ngitur ne rrjetin e transmetimit nga centralet e lidhura ne rrjetin e OSSH		153,244
7.5	Energji e furnizuar nga FTL për Kliente ne treg të liberalizuar (ne rrjetin e OSSH)		2,826
7.6	Energji vetem per tu transmetuar tek klientet ne treg te liberalizuar (ne rrjetin e OSSH)		40,149
8	<b>Humbje totale ne rrjetin e OSSH-se ( %)</b>	7.1 x 100 / 7	<b>22.00%</b>

Burimi: OSSH sha; FSHU sha; FTL sha / (OSHEE Group sha)

**Bilanci i Energjisë Elektrike për vitin 2020 (8-Mujori)**

OST sha	Njësia e Matjes	Janar	Shkurt	Mars	Prill	Maj	Qershor	Korrik	Gusht	Shuma 2020 [MWh]
	MWh									
Prodhimi nga KESH_GEN në Rrjetin e Transmetimit	1	320,656	232,362	189,098	138,036	149,444	283,726	384,974	369,553	2,067,849
Prodhimi nga HEC/HPP e vogla në Rrjetin e Transmetimit	2	14,322	22,408	48,745	36,316	23,591	5,520	1,934	407	153,244
Prodhimi nga PPE/IPP e mëdha në Rrjetin e Transmetimit	3	52,748	73,848	114,190	86,009	72,468	29,646	15,059	8,565	452,534
Prodhimi nga HEC Peshqesh	4	6,612	12,230	13,772	5,360	7,755	2,470	1,227	1,116	50,541
Prodhimi nga HEC Banja	5	14,468	8,159	26,147	12,637	6,684	7,833	10,268	10,449	96,646
Prodhimi nga HEC FANG	6	24,545	23,230	28,792	10,581	8,998	8,724	9,768	7,888	122,526
Prodhimi nga HEC Moglicë	7	-	-	295	15,367	22,287	14,766	10,913	14,379	78,008
Prodhimi nga HEC Ashta	8	18,639	16,120	15,350	8,573	11,414	13,580	17,496	17,488	118,661
Prodhimi nga KURUM (Ulez-Shkopet&Bistrica1,2)	9	41,281	30,310	46,138	37,115	21,358	16,672	14,532	12,498	219,905
Eksperti (-) nga Linjat e Interkonjeksionit	D	127,708	109,561	109,193	68,727	60,589	95,006	71,109	46,764	688,658
Importi (+) nga Linjat e Interkonjeksionit	R	364,780	324,698	227,599	211,554	238,768	230,923	197,834	211,312	2,007,467
Balanca (Total Interkonjeksioni)	10=(R-D)	237,072	215,137	118,405	142,827	178,179	135,916	126,724	164,548	1,318,809
Energjia Totale në Marrje	11=(1+2+3+4+5+6+7+8+9+R)	858,052	743,367	710,126	561,548	562,767	613,861	664,005	653,655	5,367,380
Humbjet në Rrjetin e Transmetimit (përfshirë Nevojat Vetjake)	12	17,632	16,391	17,447	13,532	12,164	11,896	13,722	14,099	116,884
Humbjet në Rrjetin e Transmetimit %	13=12/11	2.05	2.21	2.46	2.41	2.16	1.94	2.07	2.16	2.18
Energjia Totale në Dhënie	14=(11-12)	840,420	726,975	692,678	548,016	550,602	601,965	650,283	639,556	5,250,496
<i>Transmetuar në Linjat e Interkonjeksionit</i>	15=D	127,708	109,561	109,193	68,727	60,589	95,006	71,109	46,764	688,658
<i>Transmetuar tek Klientët e Kualifikuar</i>		44,974	57,388	56,199	44,029	71,918	73,689	72,235	74,833	495,264
<i>EL220-L220KURUM/337</i>		14,170	27,621	24,147	18,114	27,047	28,061	29,434	29,610	198,204
<i>F.Arrez-T3/653</i>		1,436	1,399	1,499	1,363	1,298	1,035	1,368	1,413	10,811
<i>Titan T1,T2</i>		5,181	8,943	8,934	3,396	6,808	8,746	3,750	9,679	55,439
<i>FUSHE KRUJE 220kV-T2/058</i>		8,539	4,098	6,023	6,012	12,834	12,155	12,594	9,226	71,480
<i>N/ST 220/6,3Colacent-T1/336</i>		849	1,089	824	831	1,320	1,254	1,191	1,060	8,418
<i>N/ST i GSA EL 110kV-T1/694</i>		91	112	108	249	7,828	8,188	8,820	8,737	34,131
<i>N/ST i GSA EL 110kV-T2/960</i>		-	-	-	-	-	-	-	-	-
<i>N/ST i AES EL 110kV-T1/690</i>		3,745	3,471	3,647	3,498	3,627	3,464	1,525	3,692	26,671
<i>N/ST i AES EL 110kV-T2/692</i>		3,784	3,453	3,651	3,502	3,631	3,475	5,790	3,691	30,977
<i>HEC Moglice T1,T2,T3</i>		381	330	306	270	251	205	154	177	2,074
<i>HEC Peshqesh-T1/633</i>		35	2	7	31	17	30	37	34	193
<i>Lajthiza T1/742</i>		34	326	351	242	359	338	423	425	2,499
<i>HEC Ashta1-T1,HEC Ashta2-T1,</i>		0	-	-	-	0	0	-	-	0
<i>HEC Banje T1,T2</i>		21	19	17	19	30	27	23	22	179
<i>HEC Fang-T1,T2.</i>		41	27	26	35	25	29	34	34	251
<i>Gjerim KURUM</i>		6	23	3	0	25	12	16	34	119
<i>TEC Ballsh-T1/598</i>		78	72	74	67	61	56	56	56	520
<i>FERRO KROM-F1,F2,F3,F4</i>		6,659	6,474	6,657	6,468	6,819	6,670	7,076	6,997	53,820
<i>Transmetuar në rrjetin e Shpërndarjes</i>		<b>667,660</b>	<b>559,955</b>	<b>527,213</b>	<b>435,193</b>	<b>418,034</b>	<b>433,213</b>	<b>506,883</b>	<b>517,903</b>	<b>4,066,053</b>
<i>Transmetuar në rrjetin e Shpërndarjes 110 kV</i>		563,171	470,945	440,321	361,439	349,604	371,208	437,073	448,528	3,442,288
<i>Transmetuar në rrjetin e Shpërndarjes 35 kV</i>		51,933	44,817	45,357	39,280	37,409	34,699	40,545	40,332	334,372
<i>Transmetuar në rrjetin e Shpërndarjes 6, 10, 20 kV</i>		52,556	44,193	41,535	34,473	31,021	27,307	29,265	29,042	289,392

**TË DHËNA MBI TRANSMETIMIN E ENERGJISË ELEKTRIKE NGA OPERATORI I SISTEMIT TE TRANSMETIMIT NË SHQIPËRI PËR 8-Mujorin 2020 (MWh)**

	Janar	Shkurt	Mars	Prill	Maj	Qershor	Korrik	Gusht	2020		
<b>HYRJE</b>	Dhene nga H/C e KESH ne rrjetin e Transmetimit	320,656	232,362	189,098	138,036	149,444	283,726	384,974	369,553	2,067,849	<b>5,367,380</b>
	Dhene nga H/C e me perparesi ne rrjetin e Transmetimit	52,748	73,848	114,190	86,009	72,468	29,646	15,059	8,565	452,534	
	Energji nga Hec-et Lokale levruar ne Rrjetin e Transmetimit (me ngritje)	14,322	22,408	48,745	36,316	23,591	5,520	1,934	407	153,244	
	Gjenerim KURUM (prodhues i pavarur)	41,281	30,310	46,138	37,115	21,358	16,672	14,532	12,498	219,905	
	HEC ASHTA (prodhues i pavarur Kontr.me OSHEE)	18,639	16,120	15,350	8,573	11,414	13,580	17,496	17,488	118,661	
	HEC BANJE (prodhues i pavarur)	14,468	8,159	26,147	12,637	6,684	7,833	10,268	10,449	96,646	
	HEC MOGLICE (prodhues i pavarur)	-	-	295	15,367	22,287	14,766	10,913	14,379	78,008	
	HEC PESHQESH-T1/637 (prodhues i pavarur)	6,612	12,230	13,772	5,360	7,755	2,470	1,227	1,116	50,541	
	HEC FANGU (prodhues i pavarur)	24,545	23,230	28,792	10,581	8,998	8,724	9,768	7,888	122,526	
Importi(Hyre) nga Linjat e Interkonjeksionit	364,780	324,698	227,599	211,554	238,768	230,923	197,834	211,312	2,007,467		
<b>Verivikim i saktësisë së bilancit</b>										<b>0</b>	
<b>DALJE</b>	Humbjet ne Transmetim	17,632	16,391	17,447	13,532	12,164	11,896	13,722	14,099	116,884	<b>5,367,380</b>
	Transmetuar ne Rrjetin e Shperndarjes	667,660	559,955	527,213	435,193	418,034	433,213	506,883	517,903	4,066,053	
	Klientene treg te hapur (TL) (+Tec Ballsh)	45,052	57,459	56,272	44,096	71,979	73,746	72,291	74,889	495,784	
	Eksporti (Dale) nga Linjat e Interkonjeksionit	127,708	109,561	109,193	68,727	60,589	95,006	71,109	46,764	688,658	
Humbjet ne Transmetim	17,632	16,391	17,447	13,532	12,164	11,896	13,722	14,099	116,884		
Humbjet ne Transmetim ne %	2.05	2.21	2.46	2.41	2.16	1.94	2.07	2.16	2.20		

**Burimi: OST sha**

PARAQITJA SKEMATIKE E FLUKSEVE TE ENERGIJISE NE SISTEMIN ELEKTRO-ENERGJITIK SHQIPETAR 6-muj VITI 2020 (MWh)

Energji e lëvruar nga H/C-et e KESH sha	Energji e lëvruar nga prodhuesit me përparësi lidhur ne OST	Energji e lëvruar nga H/C ASHTA lidhur ne OST	Energji e lëvruar nga H/C et Priv/konc lidhur ne OST (Prodhuar ne treg te hapur)					Energji ne hyrje nga Interkonieksioni
2,067,849	452,534	118,661	Kurum	Banje	Moglice	Fangu	Peshqesh	2,007,467
			219,905	96,646	78,008	122,526	50,541	

5,367,381

ENERGJI HYRESE NE RRJETIN E TRANSMETIMIT

153,244	Neto (Selit)	HC.Priv/Kon + CENTR Fotovoltaikë ne Rrjetin e OSSH	Humbje + Konsum ne Transmetim	Konsumi i klienteve në treg të hapur te lidhur ne Transmetim	Energji ne dalje nga Interkonieksioni
20,402	451,128	471,530	116,884	495,264	688,658

519 Tec Ballshi(-)

Energji e tranmetuar direkt ne rrjetin e OSSH	318,286
---	---------

Energji e transmetuar ne rrjetin e Shperndarjes nga OST	4,066,056
---	-----------

4,384,342 ENERGJI HYRESE NE RRJETIN E SHPERNDARJES

Lëvruar ne rrjetin e OSHE për FMF jo klient (tarifë aksesi)	40,149
---	--------

2,826 FTL (Shitur klienteve ne treg te liberalizuar)

Energji e përdorur për klientët e FSHU,OSSH / OSHEE Group  
4,341,367

Shitur Kons Familjare FSHU	1,984,283		
Shitur Kons Jo Familjare FSHU	1,334,278	3,336,664	
Shitur Kons Jo Familjare FMF	18,103		4,335,047
Humbje tekn TL	69,123		
Humbje teknike ne zona	572,496	998,383	
Humbje Jo teknike ne zona	356,764		

6,318  
Shitur si dem ekonomik

4,341,365

2 Verifikimi

LEGJENDA	
FSHU	FURNIZUES I SHERBIMIT UNIVERSAL
FMF	FURNIZUESI MUNDESISE SE FUNDIT

Burimi: OST sha; KESH sha; OSSH sha; FSHU sha; FTL sha; (OSHEE Group sha)

<b>PRODHIMI NETO NE SHQIPERI</b>	<b>Janar</b>	<b>Shkurt</b>	<b>Mars</b>	<b>Prill</b>	<b>Maj</b>	<b>Qershor</b>	<b>Korrik</b>	<b>Gusht</b>	<b>Progresivi 2020</b>
Prodhimi Neto KESH sha.	320,656	232,362	189,098	138,036	149,444	283,726	384,974	369,553	2,067,849
Hec-et Private dhe Konc. (Rrjeti Shperndarjes)	51,043	65,805	105,406	84,561	63,812	30,116	16,623	10,292	427,657
Hec-et Private dhe Konc. (Rrjeti Transmetimit)	52,748	73,848	114,190	86,009	72,468	29,646	15,059	8,566	452,534
HEC Ashta	18,639	16,120	15,350	8,573	11,414	13,580	17,496	17,488	118,661
Prodhimi Neto Hec Lanabregas	2,720	2,570	3,116	2,819	<b>2,676</b>	<b>2,312</b>	2,299	1,890	20,402
Prodhimi Neto (Hec Ulez,Shkopet,Bistrica 1,2)	41,281	30,310	46,138	37,115	21,358	16,672	14,532	12,498	219,905
Prodhimi Hec Peshqesh	6,612	12,230	13,772	5,360	7,755	2,470	1,227	1,116	50,542
Prodhimi Hec Fangu	24,545	23,230	28,792	10,581	8,998	8,724	9,768	7,888	122,527
Prodhimi Hec Banja	14,468	8,159	26,147	12,637	6,684	7,833	10,268	10,449	96,645
Prodhimi Hec Moglica	-	-	295	15,367	22,287	14,766	10,913	14,379	78,008
Prodhimi i Centraleve Fotovoltaike	1,510	1,881	2,591	2,980	3,252	3,668	3,931	<b>3,658</b>	23,471
<b>ENERGJIA NETO E PRODHUAR NE SHQIPERI</b>	<b>534,223</b>	<b>466,517</b>	<b>544,895</b>	<b>404,037</b>	<b>370,148</b>	<b>413,514</b>	<b>487,090</b>	<b>457,777</b>	<b>3,678,201</b>

<b>ENERGJI NGA INTERKONEKSIONI</b>									
Energji ne dhenie nga Interkoneksioni	127,708	109,561	109,193	68,727	60,589	95,006	71,109	46,764	688,658
Energji ne marrje nga Interkoneksioni	364,780	324,698	227,599	211,554	238,768	230,923	197,834	211,312	2,007,467
Ballanca Hyrje/Dalje nga Interkoneksioni	237,072	215,137	118,405	142,827	178,179	135,916	126,724	164,548	1,318,809

<b>KONSUMI I ENERGJISE NE SHQIPERI</b>	
Konsumi i klientëve Tarifore	3,318,562
Shitur klienteve tarifore si dem ekonomik	6,318
Konsumi i klientëve të furnizuar si FMF	18,103
Konsumi i Klientëve që përdorin rrjetin për energjinë e blerë ne treg të liberalizuar	40,149
Energji për Klientet ne treg të liberalizuar lidhur në OSSH me furnizues FTL	2,826
Konsumi për mbulimin e humbjeve ne Shperndarje	998,383
Konsumuar nga Klientet e lidhur në OST (plus TEC Ballsh)	495,784
Konsumuar nga OST (humbje +nevoja vetiake)	116,884
	4,997,009

***Burimi: OST sha; KESH sha; OSSH sha; FSHU sha; FTL sha; (OSHEE Group sha)***

PRODHIMI GJATE VITIT 2020 NGA CENTRALET E LIDHURA NE RRJETIN E TRANSMETIMIT (MWh) (8-Mujori)												
HECET DHE KAPACITETI	MW	SUBJEKTI	LIDHJA	JANAR	SHKURT	MARS	PRILL	MAJ	QERSHOR	KORRIK	GUSHT	8-MUJORI
Hec "Fierze" me fuqi 500 MW	500.000		220 kV									
Hec "Koman" me fuqi 600 MW	600.000	"KESH" sha	220 kV	320,656	232,362	189,098	138,036	149,444	283,726	384,974	369,553	2,067,849
Hec "V. Dejes" me fuqi 250 MW	250.000		220 kV									
Hec Vlora me fuqi 98 MW	98.000	"KESH" sha	220 kV									
Hec "Ulez" me fuqi 25.2 MW	25.200		110 kV									
Hec "Shkopet" me fuqi 24 MW	24.000	"Kurum International" sh.a.	110 kV	41,281	30,310	46,138	37,115	21,358	16,672	14,532	12,498	219,905
Hec "Bistrica 1" me fuqi 22.5Mw	22.500		110 kV									
Hec "Bistrica 2" me fuqi 5 Mw	5.000		110 kV									
Hec"Peshqesh"me fuqi 27,94 MW,;	27.940	"Ayen As Energji"sha	220 kV	6,612	12,230	13,772	5,360	7,755	2,470	1,227	1,116	50,542
Hec"Fangu"me fuqi 74.6 MW,;	74.600		220 kV	24,545	23,230	28,792	10,581	8,998	8,724	9,768	7,888	122,527
Hec "Banje" me fuqi 73 MW	73.000	"Devoll Hydropower" sha	110 kV	14,468	8,159	26,147	12,637	6,684	7,833	10,268	10,449	96,645
Hec "Moglice" me fuqi 184 MW	184.000	"Devoll Hydropower" sha	111 kV	-	-	295	15,367	22,287	14,766	10,913	14,379	78,008
Hec "Ashta" me fuqi 48.2 MW	48.200	"Energji Ashta" shpk	110 kV	18,639	16,120	15,350	8,573	11,414	13,580	17,496	17,488	118,661
Hec "Bishnica 2" me fuqi 2.5 MW	2.500	"HEC Bishnica 1,2 "shpk	110 kV	833	773	1,406	1,211	932	402	402	232	6,192
Hec "Dardhe" me fuqi 5.8 MW	5.800	"Wenerg " shpk	110 kV									
Hec "Truen" me fuqi 2.5 MW	2.500	"TRUEN" shpk	110 kV	868	1,488	2,341	1,513	1,433	173	3	-12	7,805
Hec "Ternove" me fuqi 8.385 Mw	0.921	"TEODORI 2003" shpk	110 kV	1,002	998	999	1,040	998	702	601	543	6,883
Hec "Gjorice" me fuqi 4.18 Mw (+h/c ne prodhim)	29.610	"DITEKO" shpk	110 kV	11,162	13,888	18,443	13,490	8,500	4,527	2,898	2,694	75,601
Hec "Slabinje" me fuqi 13.8 MW	13.800	"Power Elektrik Slabinje" shpk	110 kV	3,277	4,537	8,300	7,494	6,884	2,467	1,833	1,018	35,811
Hec "Bele 1" me fuqi 5 MW ;	5.000	"Euron Energy" shpk										
Hec "Topojan 2" me fuqi 5.8 MW,	5.800											
Hec "Bele 2" me fuqi 11 MW ;	11.000	"Alb-Energy" shpk	110 kV	8,300	13,745	17,200	18,741	18,972	10,422	4,985	2,008	94,372
Hec "Topojan 1" me fuqi 2.9 MW	2.900											
Hec "Orgjost I Ri" me fuqi 4.8 MW	4.800	"Energjal" shpk										
Hec "Cerunje-1" me fuqi 2.3 MW;	2.300											
Hec "Cerunje-2" me fuqi 2.8 MW;	2.800	"Energy partners Al" shpk	110 kV	679	1,190	2,281	2,014	1,482	744	258	-9	8,639
Hec "Rrube" me fuqi 3.6 MW;	3.600											
Hec "Rapuni 1,2" me fuqi 4 dhe 4.1 MW	8.100	"C & S Construction Energy" shpk	110 kV	2,984	3,488	4,793	4,235	3,960	1,551	201	17	21,230
Hec "Rapuni 3,4" me fuqi 8.857 MW	8.850	"C & S Energy" shpk	110 kV	2,893	3,403	4,823	3,252	2,682	1,241	428	296	19,018
Hec "Llapaj" me fuqi 13.62 MW	13.620	"Gjo.Spa.POWER" shpk	110 kV	3,265	3,932	7,614	7,445	7,814	2,647	1,118	695	34,529
Hec "Lengarice" me fuqi 8.94 MW	8.940	"Lengarica & Energy" shpk	110 kV	1,945	1,443	4,335	2,736	1,106	395	275	195	12,429
Hec "Lura 1" me fuqi 6.54 MW	6.540		110 kV									
Hec "Lura 2" me fuqi 4.02 MW	4.020	"Erdat Lura" shpk	110 kV	2,376	4,054	6,061	3,130	2,742	375	45	109	18,892
Hec "Lura 3" me fuqi 5.66 MW	5.660		110 kV									
Hec "Malla" me fuqi 5.455 MW	5.455	"Giure Rec" shpk	110 kV	912	1,424	2,140	1,035	896	274	117	35	6,832
Hec Prella me fuqi 14.97 MW	14.970	"Prelle Energji"	110 kV	1,605	3,436	4,907	2,066	1,523	111	-12	-12	13,624
HEC Cemerica 1	0.88		110 kV									
HEC Cemerica 2	1.08	"REJ ENERGY" shpk	110 kV	722	1,154	2,230	1,698	777	164	70	-10	6,805
HEC Cemerica 3	2.1		110 kV									
HEC TUC	4.47		110 kV									
HEC Lumzi	11	MC Inerte Lumzi	110 kV	1,283	2,783	4,295	1,224	1,845	432	315	181	12,358
Hec Denas	14.5	"Denas Power" shpk	110 kV	1,830	2,727	5,863	3,421	1,889	632	442	232	17,037
Llenga 1	1.73		110 kV									
Llenga 2	0.3	"HEC LLËNGE" sh.p.k	110 kV	414	441	1,278	1,229	1,080	286	264	22	5,014
Llenga 3	1.5		110 kV									
HEC Shpella Poshte 2	2.3	Liria Energji shpk	110 kV	593	699	1,515	1,286	1,079	392	454	164	6,182
HEC Germani 1	4.8		110 kV									
HEC Germani 2	1.5	SA'GA-MAT shpk	110 kV	526	684	1,133	475	192	205	5	-1	3,218
Hec Lashkiza 1	4.076		110 kV									
Hec Lashkiza 2	0.882	HEC Lashkiza shpk	110 kV	385	436	1,019	304	283	88	-7	-6	2,503
Hec Seta 1+2	7.454		110 kV									
Hec Seta 3	2.722	"Hydro Seta" sh.p.k	110 kV	2,453	3,545	5,245	3,798	2,640	337	73	-12	18,078
Hec Seta 4	4.724		110 kV									
HEC Darsi 1,2,3	12.7	Henz Energy shpk	110 kV	2,371	2,850	4,263	1,932	1,516	611	-18	-16	13,509
HEC Egnatia	5.1	REMI shpk	110 kV	70	731	1,706	1,241	1,241	472	309	202	5,972
	2,186			52,748	73,848	114,190	86,009	72,468	29,646	15,059	8,566	452,534



PRODHIMI GJATE VITIT 2020 NGA CENTRALET E LIDHURA NE RRJETIN E SHPERNDARJES (MWh)												
HECET DHE KAPACITETI	MW	SUBJEKTI	LIDHJA	JANAR	SHKURT	MARS	PRILL	MAJ	QERSHOR	KORRIK	GUSHT	8-MUJORI
Hec" Lanabregas" me fuqi 5 MW	5.000	"Hec Lanabregas" sha	35	2,720	2,570	3,116	2,819	2,676	2,312	2,299	1,890	20,402
Hec "Lemie" me fuqi 400 kW	0.400	"EMIKEL 2003" sh.p.k	10kV	264	260	260	265	263	231	181	119	1,842
Hec "Corovode" me fuqi 200 kW	0.200		10kV	54	64	104	92	67	3	0	0	384
Hec "Smokthine" me fuqi 9.2 MW	9.200	"Albania Green Energy" sh.p.k	35 kV	3,913	2,793	3,612	3,057	2,467	1,869	1,205	1,156	20,072
Hec "Bulqize" me fuqi 0.6 MW (Diber)	0.600		10kV	91	104	154	144	132	88	78	59	850
Hec "Homesh" me fuqi 0.395 MW (Diber)	0.395	10kV	28	22	57	50	44	23	0	0	225	
Hec "Zerqan" me fuqi 0.625 MW (Diber)	0.625	6kV	54	53	79	104	107	85	80	61	623	
Hec "Arras" me fuqi 4.8 MW (Diber)	4.800	20kV	1,813	1,897	2,508	2,039	1,444	270	30	43	10,045	
Hec "Orgjost" me fuqi 1.2 MW (Kukes)	1.200	10kV	287	581	649	673	606	636	389	193	4,014	
Hec "Lekbibaj" me fuqi 1.4 MW (Tropoje)	1.400	10kV	544	569	862	621	871	731	227	142	4,568	
Hec "Dukagjin" me fuqi 0.64 MW (Shkoder)	0.640	10kV	144	132	147	159	175	203	240	220	1,421	
Hec "Marjan" me fuqi 0.2 MW (Korce)	0.200	10kV	-	-	-	-	0	0	0	0	-	
Hec "Lozhan" me fuqi 0.1 MW (Korce)	0.100	10kV	-	73	79	70	54	21	3	-	300	
Hec "Barmash" me fuqi 0.83 MW (Kolonje)	0.830	10kV	161	107	210	105	24	0	0	0	607	
Hec "Treske 2" me fuqi 0.25 MW (Korce)	0.250	10kV	89	72	121	100	62	31	0	0	475	
Hec "Nikolice" me fuqi 0.7 MW (Korce)	0.700	10kV	161	132	187	176	183	101	63	12	1,013	
Hec "Funares" me fuqi 1.92 MW (Librazhd)	1.920	10kV	802	718	746	754	638	430	42	-	4,130	
Hec "Lunik" me fuqi 0.2 MW (Librazhd)	0.200	10kV	125	129	138	124	111	56	1	-	684	
Hec "Kerpice" me fuqi 0.42 MW (Gramsh)	0.420	6kV	88	75	97	84	87	73	65	61	631	
Hec "Ujanik" me fuqi 0.63 MW (Skrapje)	0.630	10kV	150	96	228	164	133	66	19	1	857	
Hec "Borsh" me fuqi 0.25 MW (Sarande)	0.250	6kV	140	105	109	82	85	65	47	42	676	
Hec "Leshnice" me fuqi 0.38 MW (Sarande)	0.380	10/6kV	102	58	79	52	35	20	8	-	353	
Hec "Velcan" me fuqi 1.2 MW (Korce)	1.200	10kV	261	288	543	550	143	135	93	72	2,085	
Hec "Muhur" me fuqi 0.25 MW (Diber)	0.250	6kV	93	98	123	101	67	3	0	0	486	
Hec "Rajan" me fuqi 1.02 MW (Kolonje)	1.020	10kV	291	188	392	285	134	51	0	0	1,342	
Hec "Lure" me fuqi 0.75 MW (Diber)	0.750	10kV	146	0	0	0	0	0	0	0	146	
Hec "Gjanç" me fuqi 2.96 MW	2.960	"Spahiu Gjanç" sh.p.k.	35 kV	-	-	-	-	253	900	1,397	1,004	3,554
Hec "Bogove" me fuqi 2.5 MW	2.500	"Wonder power" sha	35 kV	400	515	1,218	754	570	87	0	0	3,544
Hec "Xhyre" me fuqi 570 kW	0.570	"Amal" sh.p.k	10kV	191	188	248	210	211	150	88	52	1,338
Hec "Stranik" me fuqi 4.6 MW	4.600	"Hydroinvest 1" shpk	35kV	1,021	1,428	2,148	1,620	1,056	408	286	-	7,967
Hec "Zall Tore" me fuqi 3 MW	3.000		35kV	914	1,194	1,760	1,379	924	514	405	105	7,195
Hec "Klos" me fuqi 1.95 MW	1.950	"Malido-Energji" shpk	6kV	208	262	484	250	264	72	0	0	1,540
Hec "Borje" me fuqi 1.5 MW	1.500	"HIDROALBANIA Energji" shpk	35kV	1,157	1,742	2,980	3,275	3,470	1,607	832	564	15,627
Hec "Cernaleve" me fuqi 2.95 MW	2.950	"HIDROALBANIA Energji" shpk	35kV	361	713	1,205	1,286	1,304	561	275	149	5,853
Hec "Cernaleve 1" me fuqi 3.27 MW	3.270	"HIDROALBANIA Energji" shpk	35kV	438	801	1,414	1,517	1,626	632	324	208	6,961
Hec "Murdarh 1" me fuqi 2.68 MW	2.680	"HydroEnergy" shpk	10kV	1,178	1,464	1,900	947	591	156	82	0	6,318
Hec "Murdarh 2" me fuqi 1 MW	1.000		10kV	684	840	1,079	538	327	81	42	0	3,592
Hec "Dishnice" me fuqi 0.2 MW	0.200	"Dishnica Energy" shpk	10kV	24	39	84	100	57	25	-	22	351
Hec "Lubonje" me fuqi 0.3 Mw	0.300	"Elektro Lubonje" shpk	10kV	22	27	112	59	20	0	0	0	240
Hec "Peshke" me fuqi 3.43 MW	3.430	"Koka & Ergi Energy Peshk" shpk	35kV	764	1,295	1,873	1,396	769	340	0	0	6,437
Hec "Labino -Mal" me fuqi 0.25 MW	0.250	"Ansara Konkension" shpk	6kV	27	38	44	41	28	17	3	-	198
Hec "Pobreg" me fuqi 12.3 MW	12.300	"Energy Plus" shpk	35kV	2,586	4,831	6,732	6,604	6,664	3,310	712	368	31,808
Hec "Vlushe" me fuqi 14.2 MW	14.200	"Hec Vlushe" shpk	35kV	1,798	3,204	6,478	3,850	2,070	866	454	139	18,858
Hec "Belesova 1" me fuqi 0.150 MW	0.150	"Korkis 2009" shpk	6kV	10	23	42	14	0	12	0	0	101
Hec "Faqequq 1,2" me fuqi (3 MW; 3.4 MW)	6.400	"HP OSTROVICA" shpk	35kV	748	1,028	2,325	2,055	1,359	435	267	31	8,248
Hec "Shemri" me fuqi 1 MW	1.000	"Erald Energjitik" shpk	10kV	95	285	466	352	300	67	0	0	1,564
Hec "Mgulle" me fuqi 0.28 MW	0.280		10kV	83	204	249	266	204	48	0	0	1,053
Hec "Krvazi 1" me fuqi 0.6 MW	0.600	"Bekim Energjitik" shpk	10kV	157	447	472	229	248	0	0	0	1,552
Hec "Selishte" me fuqi 2 MW	2.000	"Selishte" shpk	35kV	334	596	973	775	433	197	34	-	3,344
Hec "Carshove" me fuqi 1.5 Mw	1.500	"ERMA MP" shpk	10kV	283	188	401	227	101	35	7	5	1,247
Hec "Ura e Dashit" me fuqi 1.2 MW	1.200		10kV	666	629	1,525	1,101	439	78	82	34	4,553
Hec "Gizavesh" me fuqi 0.5 MW	0.500	"Dosku Energy" shpk	10kV	209	256	293	262	275	227	59	-	1,581
Hec "Koka 1" me fuqi 3.2 MW	3.200	"Snow Energy" shpk	35kV	235	438	880	968	326	42	151	125	3,164
Hec "Stravaj" me fuqi 3.6 MW	3.600	"Stravaj Energji" shpk	35kV	937	1,163	1,792	1,310	954	341	253	35	6,785
Hec "Picar 1" me fuqi 0.2 MW	0.200	"Peshku Picar 1" shpk	6kV	122	66	69	55	44	25	6	-	386
Hec "Vertop" me fuqi 1.52 Mw	1.520	"Hydro Salillari Energy" shpk	35kV	226	283	637	374	203	184	0	0	1,907
Hec "Martanesh" me fuqi 10.5 MW	10.500	"Albanian Power" shpk	35kV	1,001	1,853	2,511	2,377	1,060	397	42	12	9,253
Hec "Verba 1,2" me fuqi (2 MW, 3 MW)	5.000	"Hydro power Plant Of Korca" shpk	35kV	529	348	879	1,390	1,768	546	226	133	5,820
Hec "Ferra" me fuqi 1.08 MW	1.080	"Hydro Borsh" shpk	35kV	862	810	1,095	797	675	612	479	390	5,720
Hec "Ostren i Vogel" me fuqi 0.32 MW	0.320	"Lu & Co Eco Energy" shpk	10kV	52	56	93	87	88	73	56	46	550
Hec "Kozel" me fuqi 0.5 MW	0.500	"E.T.H.H." shpk	10kV	90	77	137	139	117	16	0	0	577
Hec "Helmes 1" me fuqi 0.8 MW	0.800		10kV	189	191	398	376	165	38	0	0	1,357
Hec "Helmes 2" me fuqi 0.5, MW	0.500	10kV	92	85	203	167	81	19	0	0	646	
Hec "Qafezeze" me fuqi 0.4 MW	0.400	"Caushi Energji" shpk	10kV	335	342	478	470	232	65	61	32	2,015
Hec "Trebisht" me fuqi 1.775 MW	1.775	"SA.GLE.Kompani" shpk	10kV	179	484	865	623	398	0	0	0	2,549
Hec "Mollaj" me fuqi 0.6 MW	0.600	"Energji Xhaci" shpk	10kV	40	66	57	64	0	0	-	43	270
Hec "Tucep" me fuqi 0.4 MW	0.400	"Tucep" shpk	10kV	228	-	286	267	280	261	232	220	1,775
Hec "Treska4" me fuqi 3.6 MW	3.600	"Hec-Treske" shpk	35kV	861	715	1,442	958	637	403	273	217	5,506
Hec "Treska3" me fuqi 0.3 MW	0.300		35kV	101	106	189	136	79	45	32	16	704
Hec "Treska 2T" 5 me fuqi 0.62 MW	0.620	35kV	218	170	355	236	165	91	53	37	1,325	
Hec "Sotire 1 & 2" me fuqi 2.2 MW	2.200	"Hydro Energy Sotire" shpk	35kV	526	445	795	535	605	271	38	4	3,219
Hec "Shutine" me fuqi 2.4 MW	2.400	"Shutine energji" shpk	10kV	176	408	438	218	229	24	0	0	1,494
Hec "Cekrez 1,2" me fuqi (0.23 MW; 0.43 MW)	0.660	"Zall Herr Energji 2011" shpk	6kV	374	376	387	366	369	357	353	331	2,912
Hec "Qarr" me fuqi 1 MW	1.000	"Hec Qarr & Kaltan" shpk	35kV	316	298	630	377	236	108	191	125	2,281
Hec "Bisak" me fuqi 1.3 MW	1.300	"Bardhgjiana" shpk	6kV	473	222	658	253	135	69	0	0	1,810
Hec "Shales" me fuqi 1.08 MW	1.080	"Gjoka Konstruksion Energji" shpk	35kV	9	-	-	-	-	-	-	-	9
Hec "Strelece" me fuqi 1,174 MW	1.174		35kV	354	516	945	739	589	115	10	3	3,270
Hec "Shpelle" me fuqi 400 kW	0.400	"Sarolli" sh.p.k	10kV	87	110	222	214	163	62	70	28	956
Hec "Treska 1" me fuqi 130 kW	0.130	"Star NRG sh.p.k	10kV	-	-	-	-	-	-	-	-	-
Hec "Bicaj" me fuqi 3.1 MW	3.100	"EN-KU" sh.p.k	10kV	-	-	-	-	-	-	-	-	-
Hec "Leskovik 1" me fuqi 1072 kW	1.072	"Maksi Elektrik" sh.p.k	10kV	48	45	49	47	30	14	0	0	233
Hec "Leskovik 2" me fuqi 1100 kW	1.100		10kV	62	58	64	60	44	27	0	0	315
Hec "Orenje" me fuqi 875 kW	0.875	"Juana" sh.p.k	10kV	205	157	227	148	98	46	13	-	894
Hec "Tamare" me fuqi 750 kW	0.750	"WTS Energji" shpk	10kV	-	-	-	-	-	-	-	-	-
Hec "Bene" me fuqi 1000 kW	1.000	"Mariakaj" shpk	6kV	149	188	188	145	167	0	0	0	838
Hec "Vithkuq" me fuqi 2,715 MW	2.715	"Favina 1" shpk	35/10kV	915	844	1,656	1,377	726	280	157	86	6,041
Hec "Selece" me fuqi 1600 kW	1.600	"Selca Energji" shpk	10kV	280	406	505	594	429	348	105	44	2,710
Hec "Kumbull- Merkurth" me fuqi 0.83 Mw	0.830	"DN & NAT Energy" shpk	6kV	79	117	189	203	190	29	0	0	807
Hec "Sasai" me fuqi 8.6 MW	8.600	"Energjo - Sas" shpk	35									

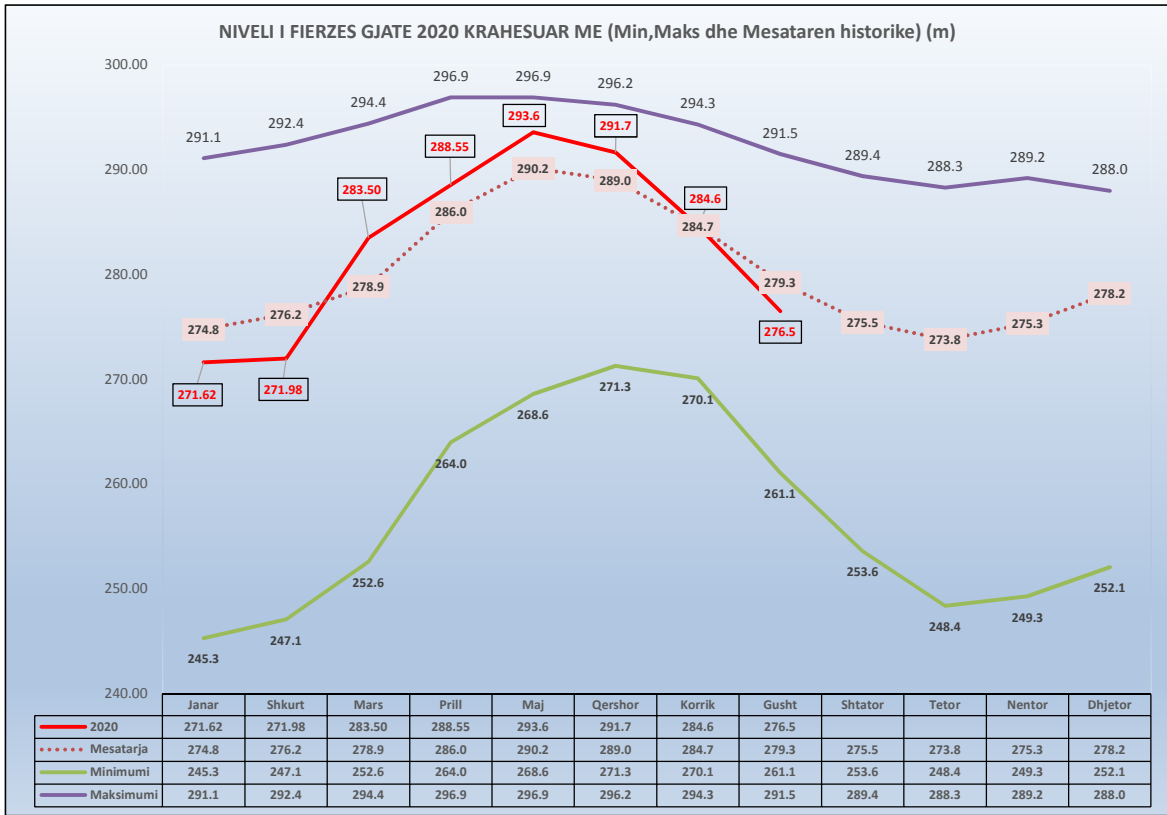
Hec"Hurdhas 1" me fuqi 1.71MW.	1.710	"Komp Energji" shpk	6kV	359	865	1,181	592	296	108	0	0	3,401
Hec"Perrollaj" me fuqi 0,5 MW	0.500	"Fatlum" shpk	10kV	-	43	110	3	0	20	0	0	176
Hec"Koxhera" me fuqi 0,62 MW	0.620	"Koxherri Energji" shpk	10kV	114	178	211	149	101	75	36	27	891
Hec"Kacni" me fuqi 3,87 MW	3.870	"Kisi-Bio-Energji" shpk	20kV	196	378	844	805	497	242	0	0	2,963
Hec"Lena 1" me fuqi 1,95 MW,;	1.950		35kv									
Hec"Lena 2" me fuqi 2,3 MW	2.300	"Gama Energy" shpk	35kv	257	714	1,394	1,046	271	21	0	0	3,703
Hec"Lena 2A" me fuqi 0,25 MW	0.250		35kv									
Hec"Driza" me fuqi 3,408 MW	3.408	"Mesopotam Energy" shpk	35kv	361	236	454	245	172	116	72	22	1,677
Hec Strelca 1,2,3 (1.504 MW, 0.325 MW, 3.52 MW)	5.349	"Strelca Energy" shpk	35kv	734	814	1,752	2,042	1,991	623	440	257	8,653
Hec"Ujanik 2" me fuqi 2,5 MW	2.500	"HP Ujaniku Energy" shpk	35kv	495	573	1,025	605	427	94	0	0	3,218
Hec"Nishove" me fuqi 1,36 MW	1.360	"Nishova Energy" shpk	35kv	119	95	342	169	91	55	0	0	871
Hec"Shtika" me fuqi 1,3 MW	1.300	"Perparimi SK" shpk	10kV	24	80	478	270	47	0	0	0	900
Hec"Ballenje" me fuqi 1,9 MW	1.900	"Ballenja Power Martanesh" shpk	35kv	149	293	678	395	187	62	6	0	1,769
Hec Gavran 1	0.998	"Gavran Energy" shpk	35kv	213	247	450	336	224	88	81	0	1,638
Hec Gavran 2	1.215	"Gavran Energy" shpk	35kV	150	156	362	284	215	61	42	0	1,270
Hec Kasollet e Selces 1	4.000	"Xhango Energji" shpk	35kV	573	859	1,432	1,145	1,145	573	286	-	6,014
Hec Holta Kabash	2.200		35kV									
Hec Holta Porocan	3.300	HEC Kabash Porocan shpk	35kV	657	1,399	1,950	1,800	1,103	563	494	-	7,965
Hec Lusen 1	0.315	"Eurobiznes" shpk	35kV	41	52	107	52	31	12	10	6	310
Hec Ura e Fanit	1.000	"Ayen As Energji" sha	35kV	509	469	506	467	502	467	492	436	3,846
HEC Gorice	1.747	"THE BLUE STAR" sh.p.k	35kV	214	330	737	740	388	41	0	0	2,450
HEC Kabash 1&2	5.800	"Univers Energji" shpk	35kV	210	630	630	105	420	0	0	0	1,995
HEC "Tucep 2"	1.7	"DUKA T2" shpk	35kV	143	223	-	160	400	309	256	227	1,718
Hec Dobrenje Tomorrice	2.4	DAAB Energy Group shpk	35kV	287	305	560	396	315	242	150	123	2,377
Hec Razzoll	0.765	Hydro Vizion shpk (I pa licens nga ER	35kV	80	90	235	295	173	42	42	81	1,038
Hec Dragostunje	3.1	"HEC-i Dragostunje" shpk	35kV	771	1,338	2,653	1,847	1,197	0	0	0	7,806
Hec Stebleve	3.4	"PURE ENERGY STEBLEVA" shpk	35kV	158	309	517	392	320	4	0	0	1,701
Hec Zerec 1	0.55											
Hec Zerec 2	1.315	"EnRel Hydro" shpk	35kV	288	543	885	836	402	143	80	45	3,222
Hec Shëngjon 1	0.651											
Hec Shëngjon 2	0.356	"EDIANI" sh.p.k.	35kV	150	178	309	187	195	50	-	11	1,081
HEC Blaç	1.3	"BLAC ENERGY" sh.p.k	35kV	36	33	65	213	266	46	16	-	674
HEC Qarrishtë	0.3	"IDI-2005" SHPK	35kV	98	136	197	178	207	81	0	0	897
HEC Vendresh	0.456	"HP VENDRESH ENERGY" SHPK	35kV	4	31	109	25	0	0	0	0	169
HEC "Antena"	1.105	"DERBI-E" shpk	35kV	166	260	407	172	68	6	0	0	1,080
HEC "Kamenice"	0.973	HP Kamenica shpk	10	174	230	428	495	216	72	63	49	1,726
HEC "Qyteze"	0.9	Muso hec Qytezë	10	121	148	283	329	202	85	47	35	1,249
HEC Marjan Gura e Vesheve	0.63	Marituda Shpk	10	144	59	155	141	181	78	24	14	796
HEC Skatine	2.677	Skatina Hec Shpk	10	164	408	686	232	254	26	22	14	1,806
HEC Kapariel	0.2	ABV Konstruktion Shpk	10	60	52	79	66	54	43	25	28	406
HEC Letaj	0.54	Asi-Tre Shpk	10	70	95	154	86	60	41	14	12	532
HEC Nice	2.133	MP-HEC Shpk	35	72	152	385	330	263	41	9	-	1,251
HEC Meshurdhe	1.8	SIMA-Com Shpk	10	299	639	779	354	431	71	0	0	2,571
HEC Thanez	1.95	AFRIMI K Shpk	35	298	877	961	676	656	212	-	5	3,684
HEC OSOJE	1.9	OSOJA HPP shpk	35	126	762	1,426	1,421	545	326	307	327	5,239
Hec Voskopoje	1.9	FAVINA 1 shpk	35	-	312	1,078	730	329	191	230	98	2,968
Hec Nderfushas	1.34	SGD Energji shpk	35	-	68	346	201	93	27	3	-	739
Hec Rreshen	0.38	Nikolli Energy shpk	10	112	45	69	48	39	19	13	-	345
Hec Gurra				0	0	0	0	0	162	68	53	283
Vile				0	0	0	0	59	106	57	48	270
Dukona				0	0	0	0	17	7	4	1	29
Jithkuq Korça 1				0	0	0	0	28	0	0	0	28
Prevali				0	0	0	0	0	0	0	2	2
	270			53,763	68,375	108,522	87,380	66,488	32,428	18,922	12,182	448,059
										2,299	1,890	
										16,623	10,292	

PRËDHIMI GJATE VITIT 2020 NGA CENTRALET FOTOVOLTAIKE TË LIDHURA NE RRJETIN E SHPERNDARJES (MWh)												
CENTRAL FOTOVOLTAIK	MW	SUBJEKTI	LIDHJA	JANAR	SHKURT	MARS	PRILL	MAJ	QERSHOR	KORRIK	GUSHT	8-MUJORI
UKKO (pa sistemuare sistem)	1.000	"UKKO"sha (Ujshjell.Kanal.Korce)										
Seman - 2	2	"SEMAN2SUN" sh.p.k	35 kV	212	274	334	387	415	483	510	469	3,084
Topojë	1.998	"SONNE" sh.p.k	35 kV	214	273	332	388	413	477	504	464	3,065
Topojë 2	1.998	"AED SOLAR" sh.p.k	35 kV	217	273	330	387	413	475	503	463	3,062
Topojë (Sheq Marinas)	2	"AGE SUNPOWER" sh.p.k	35 kV	221	274	331	388	414	475	506	464	3,075
Topojë (Sheq Marinas) 2	2	"SEMAN SUNPOWER" sh.p.k	35 kV	218	278	334	391	418	481	494	469	3,082
Seman solar	2	"SEMANISOLAR" sh.p.k	35 kV	250	283	323	381	396	455	479	452	3,020
Tren Bilisht	2	"RTS" sh.p.k	35 kV	-	-	317	297	393	458	416	408	2,289
Plug, Lushnje	2	"AEE" sh.p.k	10 kv	177	224	289	361	390	363	520	470	2,795
	16.996			1,510	1,881	2,591	2,980	3,252	3,668	3,931	3,658	23,471

Kapaciteti Instaluar i gjithe prodhuesve 2,473 MW

	NIVELI I FIERZES 1991-2020											
	Janar	Shkurt	Mars	Prill	Maj	Qershor	Korrik	Gusht	Shtator	Tetor	Nentor	Dhjetor
1991	254.4	260.8	268.6	279.9	293.4	296.1	294.0	291.5	289.4	288.3	288.8	285.1
1992	278.0	274.1	268.0	278.8	281.0	279.6	275.2	268.7	263.9	271.4	281.9	280.6
1993	275.2	265.3	264.7	278.5	280.5	277.3	271.0	261.1	253.6	249.9	255.6	270.2
1994	254.4	260.8	268.6	279.9	293.4	296.1	294.0	291.5	289.4	288.3	288.8	285.1
1995	253.8	260.3	262.5	275.3	289.0	288.7	284.5	282.2	288.2	288.2	279.9	287.5
1996	287.1	288.7	286.5	294.7	295.8	293.1	287.6	282.2	285.1	284.3	289.2	291.3
1997	289.4	284.5	281.7	285.2	294.1	292.0	287.0	280.0	272.9	272.4	270.8	277.2
1998	273.7	270.0	265.2	278.9	288.1	287.4	281.8	277.6	276.0	277.1	279.0	277.1
1999	272.7	275.6	281.5	290.5	295.9	293.3	288.3	279.5	271.0	257.6	263.6	276.9
2000	276.4	276.7	276.8	286.9	286.6	280.1	273.5	267.5	261.6	248.4	249.3	252.1
2001	253.6	258.2	275.1	282.9	287.6	283.8	273.7	271.1	269.2	263.6	263.2	252.1
2002	245.3	247.1	252.6	264.0	268.6	271.3	270.1	267.8	274.3	286.1	285.3	284.0
2003	291.1	289.5	286.3	287.0	292.3	290.3	285.9	280.8	276.0	282.6	285.6	283.3
2004	284.7	290.8	293.4	296.0	296.2	293.1	286.3	281.1	280.0	286.1	286.1	288.0
2005	281.2	281.5	293.3	296.1	295.6	294.1	286.7	277.2	266.5	256.9	253.6	279.0
2006	283.5	288.6	294.4	295.9	296.5	295.9	293.8	290.2	285.3	278.7	266.2	256.2
2007	256.1	263.7	272.0	276.8	276.8	274.8	268.5	263.6	261.8	261.1	275.8	282.1
2008	285.1	289.7	290.9	295.5	295.3	295.7	294.3	288.6	283.9	280.9	285.2	286.5
2009	283.6	281.8	283.4	292.5	293.7	292.4	288.0	281.2	276.2	271.6	266.3	280.1
2010	290.1	289.2	293.9	296.0	296.3	294.4	291.8	288.6	284.9	285.2	284.3	287.5
2011	281.6	274.4	275.0	276.6	281.0	286.1	284.7	279.0	273.9	268.2	261.6	264.5
2012	265.8	267.7	262.0	280.2	293.4	294.4	288.4	280.4	261.4	261.6	269.0	276.6
2013	278.3	281.5	294.8	296.9	296.9	294.2	289.7	283.6	280.8	281.4	282.5	276.1
2014	275.1	277.5	274.6	285.3	292.9	294.9	291.7	286.8	285.5	285.0	284.8	286.3
2015	288.7	289.4	292.2	296.3	296.1	293.3	287.5	280.1	272.1	275.4	278.9	275.9
2016	289.9	292.4	291.8	296.5	296.2	295.6	290.5	285.4	283.3	288.4	288.9	281.6
2017	271.5	277.7	280.9	278.7	281.6	272.4	270.2	268.0	271.0	264.6	269.6	289.9
2018	289.7	292.0	295.0	296.5	296.4	296.0	294.0	287.5	277.9	270.2	266.5	267.3
2019	267.3	268.2	272.7	279.9	289.9	292.7	287.6	278.5	274.2	268.6	273.2	275.6
2020	271.62	271.98	283.50	288.55	293.6	291.7	284.6	276.5				

	Janar	Shkurt	Mars	Prill	Maj	Qershor	Korrik	Gusht	Shtator	Tetor	Nentor	Dhjetor
2020	271.62	271.98	283.50	288.55	293.6	291.7	284.6	276.5				
Mesatarja	274.8	276.2	278.9	286.0	290.2	289.0	284.7	279.3	275.5	273.8	275.3	278.2
Minimumi	245.3	247.1	252.6	264.0	268.6	271.3	270.1	261.1	253.6	248.4	249.3	252.1
Maksimumi	291.1	292.4	294.4	296.9	296.9	296.2	294.3	291.5	289.4	288.3	289.2	288.0



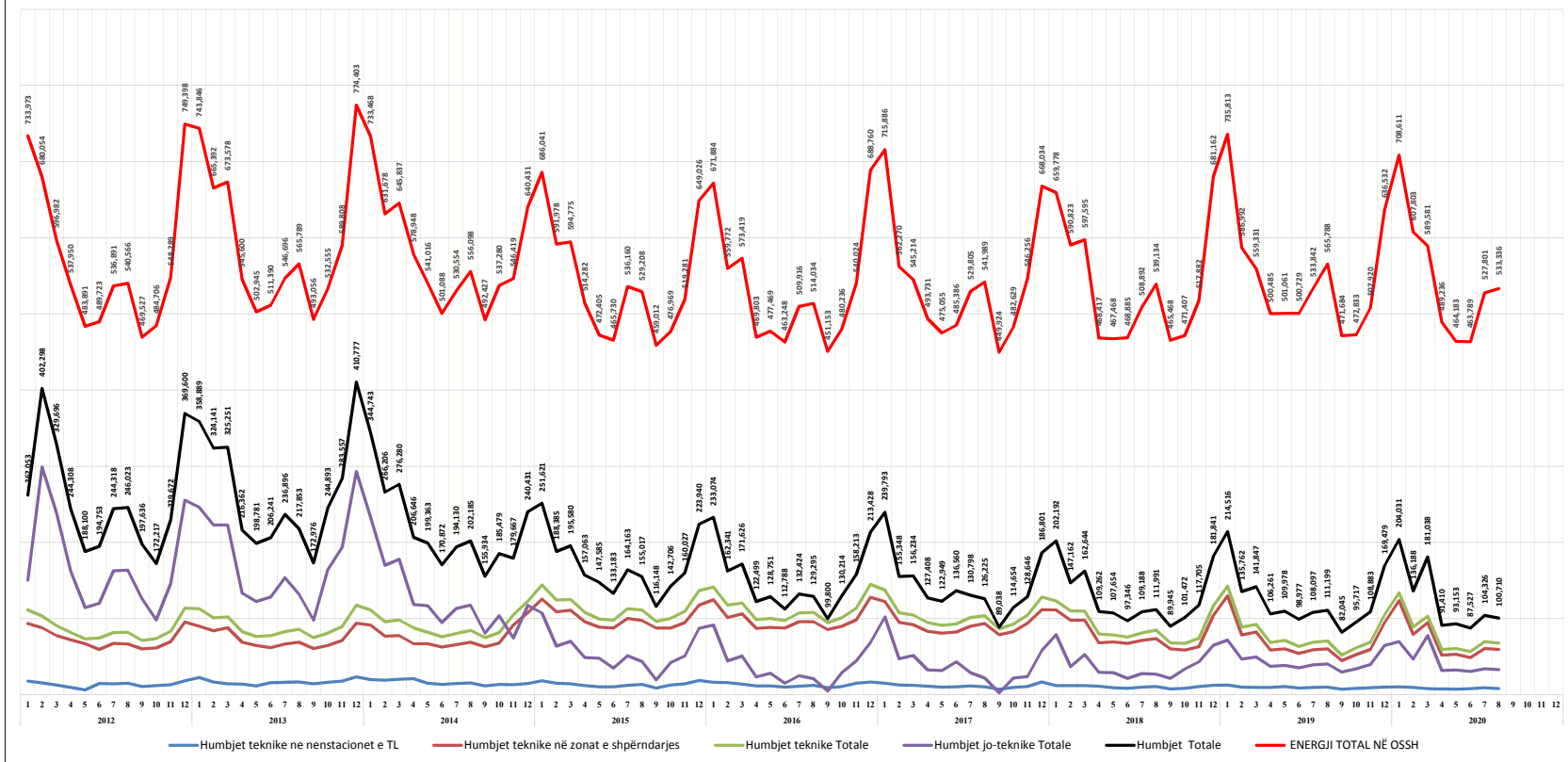
Burimi OST sha; KESH sha



HUMBJET (SHPËRNDARJE) 2009-2020

	2012	2013	2014	2015	2016	2017	2018	2019	2020
Humbjet teknike ne nenshtacionet e TL	86974	111515	111515	111515	111515	111515	111515	111515	111515
Humbjet teknike në zonat e shpërndarjes	33481	33481	33481	33481	33481	33481	33481	33481	33481
Humbjet teknike Totale	120455	145000	145000	145000	145000	145000	145000	145000	145000
Humbjet jo-teknike Totale	111515	111515	111515	111515	111515	111515	111515	111515	111515
Humbjet Totale	231970	256515	256515	256515	256515	256515	256515	256515	256515
ENERGJI TOTAL NË OSSH	733973	733973	733973	733973	733973	733973	733973	733973	733973

HUMBJET NË SISTEMIN E SHPËRNDARJES SË ENERGJISË ELEKTRIKE PËR PERIUDHËN 2012-2020 (MWh)

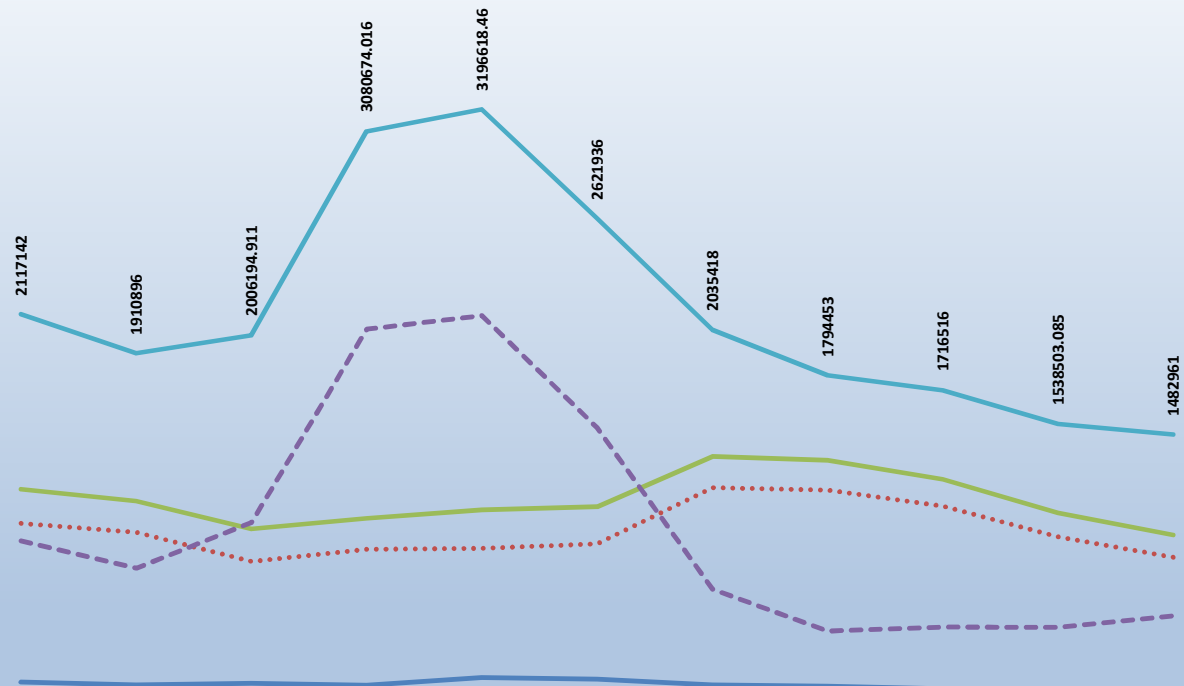


Burimi: QSSH sha / (OSHEE Group sha)

### HUMBJET NE RRJETIN E SHPERNDARJES 2009-2020 (MWh)

	2009	2010	2011	2012	2013	2014	2015	2016	2017	2018	2019	2020 (8 Mujori)
HUMBJE TEKNIKE NE TL (N/ST)	178,738	163,546	170,937	161,831	201,684	193,208	162,725	155,629	141,707	125,974	117,739	69,123
HUMBJE TEKNIKE NE ZONAT E OSSH	1,015,450	968,535	814,826	879,616	884,360	908,416	1,203,793	1,190,872	1,106,007	944,587	836,561	572,496
TOTALI I HUMBJEVE TEKNIKE OSSH	1,194,188	1,132,081	985,763	1,041,447	1,086,044	1,101,624	1,366,518	1,346,501	1,247,714	1,070,560	954,300	641,619
HUMBJE JOTOKNIKE OSSH	922,954	778,815	1,020,432	2,039,227	2,110,575	1,520,312	668,900	447,952	468,802	467,943	528,661	356,764
TOTALI I HUMBJEVE OSSH	2,117,142	1,910,896	2,006,195	3,080,674	3,196,618	2,621,936	2,035,418	1,794,453	1,716,516	1,538,503	1,482,961	998,383

### HUMBJET NE RRJETIN E SHPERNDARJES 2009-2019 (MWh)



	2009	2010	2011	2012	2013	2014	2015	2016	2017	2018	2019
HUMBJE TEKNIKE NE TL (N/ST)	178738	163546	170937.2189	161830.6504	201683.9506	193208	162725	155629	141707	125973.7158	117739
HUMBJE TEKNIKE NE ZONAT E OSHEE	1015450	968534.8354	814825.7159	879616.3656	884359.9722	908416	1203793	1190872	1106007	944586.5001	836561
TOTALI I HUMBJEVE TEKNIKE OSHEE	1194188	1132080.835	985762.9348	1041447.016	1086043.923	1101624	1366518	1346501	1247714	1070560.216	954300
HUMBJE JOTOKNIKE OSHEE	922954	778815.1646	1020431.977	2039227	2110574.537	1520312	668900	447952	468802	467942.8686	528661
TOTALI I HUMBJEVE OSHEE	2117142	1910896	2006194.911	3080674.016	3196618.46	2621936	2035418	1794453	1716516	1538503.085	1482961

**Burimi: OSSH sha / (OSHEE Group sha)**

FATURIM-ARKETIMET DHE NDRYSHIMI I GJENDJES DEBITORE GJTE VITIT 2014 (000/LEKE)									
Viti 2014	Te arketueshme	Faturat 2014	arketimi per faturat e 2014	Arketimi per faturat e 2007-2013	Arketimi total	Te Arketueshme per energjine e faturuar ne vitin 2014	Ndryshimi i gjendjes se Llogarive te arketueshme gjate vitit 2014	Shuarje Detyrimesh me VKM nr 198, dt 03.04.2014	
	71,374,447	2	5	7	6=5+7	9=(2-5)	10=(2-5-7-a)	a	
Janar	72,385,326	4,899,949	3,593,288	295,782	3,889,070	1,306,661	1,010,680	0	
Shkurt	73,231,148	4,623,941	1,224,858	2,553,261	3,774,119	3,399,083	845,621	0	
Mars	73,905,562	4,645,564	3,226,836	744,315	3,971,150	1,418,729	674,414	0	
Prill	70,676,446	4,538,921	3,291,530	680,634	3,972,164	1,247,391	3,229,116	3,795,873	
Maj	71,544,530	4,190,118	3,345,044	374,413	3,719,457	845,074	868,084	(397,423)	
Qershor	72,209,337	4,025,464	3,065,523	295,134	3,360,657	959,941	664,807	0	
Korrik	72,616,893	4,097,547	3,154,902	305,089	3,459,991	912,644	607,556	0	
Gusht	73,694,774	4,299,885	3,115,141	311,467	3,426,607	1,184,744	877,881	(4,504)	
Shtator	72,627,145	4,065,705	3,343,188	1,069,912	4,413,100	722,518	1,167,630	820,235	
Tetor	72,630,240	4,280,796	3,647,110	457,224	4,104,334	633,686	103,095	73,367	
Nentor	72,771,144	4,504,528	3,459,192,000	904,432	4,363,624	1,045,336	140,904	0	
Dhjetor	71,406,047	4,581,556	4,273,471	2,071,180	6,350,653	712,003	1,365,097	0	
Total	71,374,447	53,157,974	38,770,084	10,068,842	48,839,927	14,387,890	4,287,448	0	

FATURIM-ARKETIMET DHE NDRYSHIMI I GJENDJES DEBITORE GJTE VITIT 2015 (000/LEKE)									
Viti 2015	Te arketueshme	Faturat 2015	arketimi per faturat e 2015	Arketimi per faturat e 2007-2014	Arketimi total	Te Arketueshme per energjine e faturuar ne vitin 2015	Ndryshimi i gjendjes se Llogarive te arketueshme gjate vitit 2015	Shuarje Detyrimesh	
	71,406,047	2	5	7	6=5+7	9=(2-5)	10=(2-5-7-a)	a	
Janar	71,336,669	5,549,211	58,385	5,560,203	5,618,588	5,490,826	69,378	0	
Shkurt	70,243,444	5,593,064	4,241,484	2,444,805	6,686,289	1,351,580	1,093,225	0	
Mars	70,034,144	5,588,150	4,663,802	1,133,648	5,797,450	924,348	209,300	0	
Prill	68,812,916	4,959,074	4,470,298	966,900	4,837,198	482,776	1,221,229	1,337,105	
Maj	66,868,972	4,521,837	4,234,873	504,755	4,739,628	286,963	1,943,943	1,726,151	
Qershor	67,998,219	4,691,930	4,081,633	309,420	4,391,053	610,297	229,247	71,630	
Korrik	67,647,043	5,258,700	4,246,167	372,576	4,618,743	1,012,533	448,824	191,133	
Gusht	67,611,751	5,241,968	4,481,964	354,383	4,836,347	760,004	647,709	340,933	
Shtator	67,453,478	4,835,022	4,700,033	293,262	4,993,295	134,989	153,274	0	
Tetor	67,286,769	4,683,924	4,541,794	308,818	4,850,612	142,130	166,689	0	
Nentor	67,958,634	4,991,543	4,020,208	298,490	4,318,698	971,335	672,845	0	
Dhjetor	68,803,189	5,872,243	4,750,948	277,740	5,028,688	1,121,295	843,555	0	
Total	71,406,047	61,780,665	48,491,589	12,225,002	60,716,591	13,289,076	3,666,932	0	

FATURIM-ARKETIMET DHE NDRYSHIMI I GJENDJES DEBITORE GJTE VITIT 2016 (000/LEKE)									
Viti 2016	Te arketueshme	Faturat 2016	arketimi per faturat e 2016	Arketimi per faturat e 2007-2015	Arketimi total	Te Arketueshme per energjine e faturuar ne vitin 2016	Ndryshimi i gjendjes se Llogarive te arketueshme gjate vitit 2016	Shuarje Detyrimesh	
	68,803,189	2	5	7	6=5+7	9=(2-5)		a+b	
Janar	69,383,532	5,987,971	11,010	5,996,619	6,007,628	5,976,962	580,343	0	
Shkurt	69,618,271	5,445,503	3,744,680	1,455,075	5,199,755	1,700,824	234,739	0	
Mars	69,927,158	5,513,517	4,673,435	531,195	5,204,630	840,082	308,887	0	
Prill	69,788,727	4,826,977	4,641,557	323,851	4,965,408	185,420	138,431	0	
Maj	67,045,795	4,835,022	4,592,256	276,918	4,869,174	331,477	2,745,932	2,800,490	
Qershor	67,501,589	4,525,728	4,203,847	245,816	4,449,663	321,881	458,794	0	
Korrik	68,121,673	5,241,459	4,390,083	321,293	4,621,375	851,376	620,084	0	
Gusht	68,364,412	5,309,834	4,799,986	267,109	5,067,095	509,848	242,739	0	
Shtator	68,350,354	4,844,483	4,650,851	207,690	4,858,541	193,633	14,058	0	
Tetor	68,499,705	4,834,628	4,480,377	204,901	4,685,278	354,252	149,351	0	
Nentor	69,379,496	5,236,329	4,175,654	188,538	4,364,197	1,061,324	872,791	0	
Dhjetor	70,729,061	6,410,681	4,854,705	208,411	5,063,116	1,555,976	1,347,565	0	
Total	68,803,189	63,012,893	49,129,839	9,537,411	58,667,251	13,883,054	2,800,490	0	

FATURIM-ARKETIMET DHE NDRYSHIMI I GJENDJES DEBITORE GJTE VITIT 2017 (000/LEKE)									
Viti 2017	Te arketueshme	Faturat 2017	arketimi per faturat e 2017	Arketimi per faturat e 2007-2016	Arketimi total	Te Arketueshme per energjine e faturuar ne vitin 2017	Ndryshimi i gjendjes se Llogarive te arketueshme gjate vitit 2017	Shuarje Detyrimesh	
	70,720,061	2	5	7	6=5+7	9=(2-5)			
Janar	71,449,571	6,192,711	2,680	5,460,521	5,463,201	6,190,031	729,510	0	
Shkurt	71,348,179	5,833,527	3,823,606	1,601,313	5,424,919	1,499,921	101,992	0	
Mars	70,863,092	5,141,318	4,963,071	660,834	5,623,905	177,347	484,387	0	
Prill	70,863,042	4,857,464	4,525,615	331,899	4,857,514	331,849	50	0	
Maj	70,398,535	4,667,810	4,599,520	533,697	5,133,217	68,290	465,407	0	
Qershor	70,787,603	4,675,924	4,055,720	231,137	4,286,856	620,204	389,068	0	
Korrik	71,320,868	5,435,009	4,599,534	302,110	4,901,744	835,375	533,356	0	
Gusht	71,661,546	5,635,939	4,996,203	299,058	5,295,261	639,736	340,678	0	
Shtator	71,152,686	4,824,463	5,046,489	286,834	5,333,323	222,026	508,860	0	
Tetor	71,047,597	4,902,445	4,759,610	247,923	5,007,534	142,834	105,089	0	
Nentor	72,031,524	5,527,306	4,313,657	229,722	4,543,379	1,213,649	983,927	0	
Dhjetor	72,848,682	6,347,229	5,153,618	376,452	5,530,070	1,193,611	87,158	0	
Total	70,720,061	63,012,893	49,129,839	9,537,411	58,667,251	13,883,054	2,800,490	0	

FATURIM-ARKETIMET DHE NDRYSHIMI I GJENDJES DEBITORE GJTE VITIT 2018 (000/LEKE)									
Viti 2018	Te arketueshme	Faturat 2018	arketimi per faturat e 2018	Arketimi per faturat e 2007-2017	Arketimi total	Te Arketueshme per energjine e faturuar ne vitin 2018	Ndryshimi i gjendjes se Llogarive te arketueshme gjate vitit 2018	Shuarje Detyrimesh	
	72,848,682	2	5	7	6=5+7	9=(2-5)			
Janar	72,660,803	5,939,299	6,290	6,855,898	6,118,178	5,877,019	178,879	0	
Shkurt	72,671,709	5,685,334	3,857,605	1,825,823	5,683,429	1,827,729	1,905	0	
Mars	72,336,005	5,680,352	5,325,171	690,885	6,016,056	355,181	335,704	0	
Prill	71,388,405	4,671,224	5,191,294	427,530	5,618,824	520,070	947,600	0	
Maj	70,960,699	4,731,173	4,839,352	375,617	5,214,970	108,179	483,797	0	
Qershor	71,145,033	4,976,163	4,595,654	389,521	4,985,175	478,717	237,425	0	
Korrik	71,320,917	4,403,874	4,895,796	329,195	5,224,991	508,078	178,883	0	
Gusht	71,608,055	5,805,751	5,141,751	376,861	5,518,612	664,000	287,139	0	
Shtator	71,254,995	5,047,859	5,088,650	312,269	5,400,919	40,791	353,061	0	
Tetor	70,741,012	4,975,893	5,162,026	327,849	5,489,875	186,133	513,982	0	
Nentor	71,270,659	5,318,350	4,317,124	471,580	4,788,703	1,001,226	529,647	0	
Dhjetor	71,896,707	6,625,289	5,579,121	420,120	5,999,241	1,046,168	626,048	0	
Total	72,848,682	63,012,893	49,129,839	9,537,411	58,667,251	13,883,054	2,800,490	0	

FATURIM-ARKETIMET DHE NDRYSHIMI I GJENDJES DEBITORE GJTE VITIT 2019 (000/LEKE)									
Viti 2019	Te arketueshme	Faturat 2019	arketimi per faturat e 2019	Arketimi per faturat e 2007-2018	Arketimi total	Te Arketueshme per energjine e faturuar ne vitin 2019	Ndryshimi i gjendjes se Llogarive te arketueshme gjate vitit 2019	Shuarje Detyrimesh	
	71,896,707	2	5	7	6=5+7	9=(2-5)			
Janar	72,594,758	6,710,114	11,908	6,000,155	6,012,063	6,698,206	698,051	0	
Shkurt	72,300,340	5,819,929	4,371,736	1,842,611	6,214,348	1,448,193	394,418	0	
Mars	73,091,840	5,496,920	5,066,376	743,045	5,809,420	430,345	312,500	0	
Prill	71,416,859	5,155,722	5,183,086	443,917	5,627,003	27,364	471,281	0	
Maj	71,210,144	5,075,626	4,909,283	372,758	5,282,041	166,343	206,415	0	
Qershor	71,763,430	5,334,553	4,464,984	306,283	4,771,267	859,569	553,286	0	
Korrik	71,866,698	5,684,531	5,061,596	499,667	5,561,263	622,935	123,268	0	
Gusht	72,343,496	6,100,924	5,215,417	328,709	5,644,126	785,307	456,798	0	
Shtator	71,820,038	5,207,417	5,046,025	282,250	5,328,275	239,208	521,458	0	
Tetor	71,361,843	4,992,973	5,051,814	401,354	5,394,327	58,841	460,195	0	
Nentor	72,178,116	5,292,443	4,247,863	228,307	4,476,170	1,044,580	816,273	0	
Dhjetor	72,573,675	6,251,767	5,518,118	338,090	5,856,208	733,649	395,559	0	
Total	71,896,707	63,012,893	49,129,839	9,537,411	58,667,251	13,883,054	2,800,490	0	

FATURIM-ARKETIMET DHE NDRYSHIMI I GJENDJES DEBITORE GJTE VITIT 2020 (000/LEKE)									
Viti 2020	Te arketueshme	Faturat 2020	arketimi per faturat e 2020	Arketimi per faturat e 2007-2019	Arketimi				

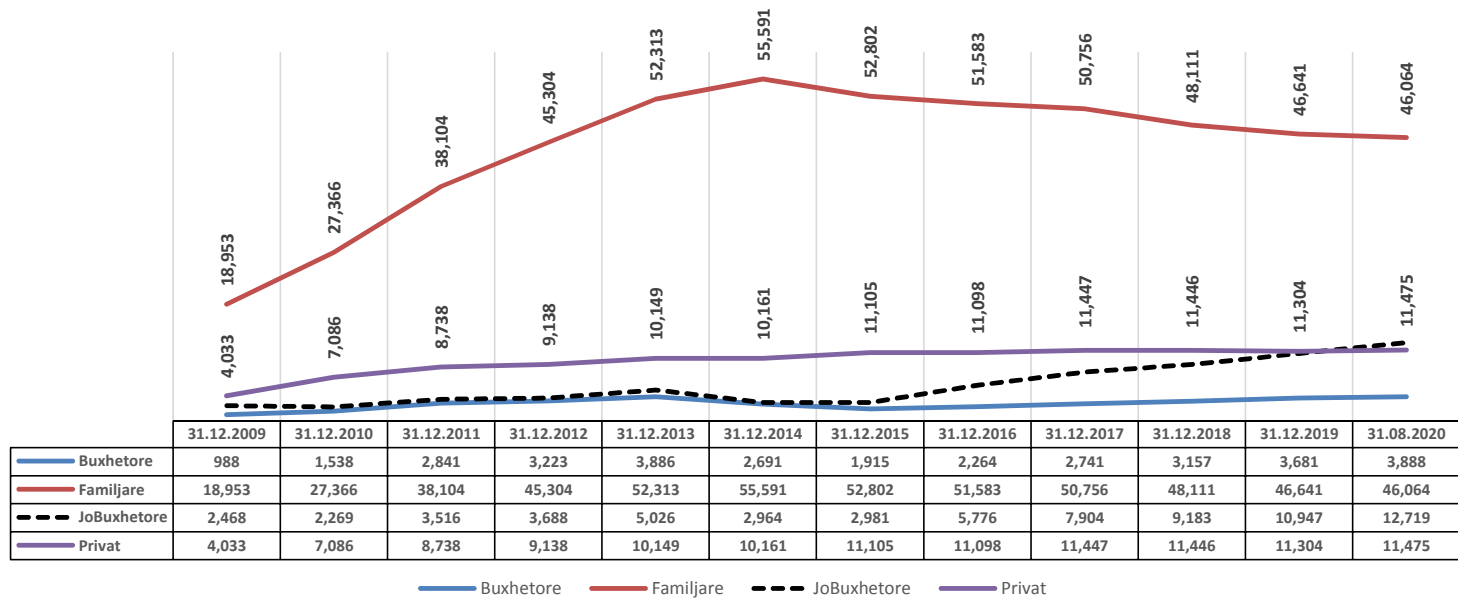




**ECURIA E GJENDJES DEBITORE NDAJ OSHEE 31 DHJETOR 2009 - 31 GUSHT 2020 ( 000 000 LEKË)**

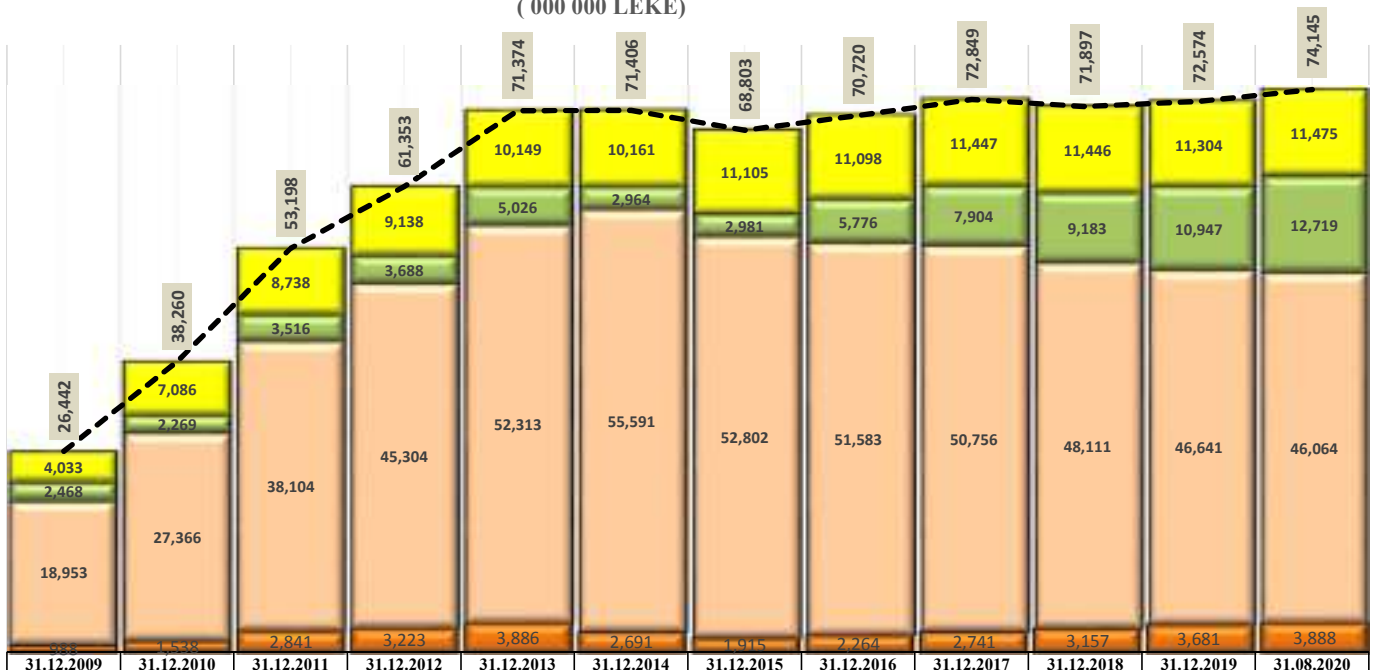
	31.12.2009	31.12.2010	31.12.2011	31.12.2012	31.12.2013	31.12.2014	31.12.2015	31.12.2016	31.12.2017	31.12.2018	31.12.2019	31.08.2020
<b>Buxhetore</b>	988	1,538	2,841	3,223	3,886	2,691	1,915	2,264	2,741	3,157	3,681	3,888
<b>Familjare</b>	18,953	27,366	38,104	45,304	52,313	55,591	52,802	51,583	50,756	48,111	46,641	46,064
<b>JoBuxhetore</b>	2,468	2,269	3,516	3,688	5,026	2,964	2,981	5,776	7,904	9,183	10,947	12,719
<b>Privat</b>	4,033	7,086	8,738	9,138	10,149	10,161	11,105	11,098	11,447	11,446	11,304	11,475
<b>Total</b>	26,442	38,260	53,198	61,353	71,374	71,406	68,803	70,720	72,849	71,897	72,574	74,145

**ECURIA E GJENDJES DEBITORE NDAJ OPERATORIT TE SHPERNDARJES  
31 DHJETOR 2009 - 31 GUSHT 2020 SIPAS KLIENTËVE  
( 000 000 LEKË)**



Burimi OSHEE sha

**ECURIA E GJENDJES DEBITORE NDAJ FSHU / OSHEE Group sha**  
**31 DHJETOR 2009 - 31 GUSHT 2020 SIPAS KLIENTËVE**  
**( 000 000 LEKË )**



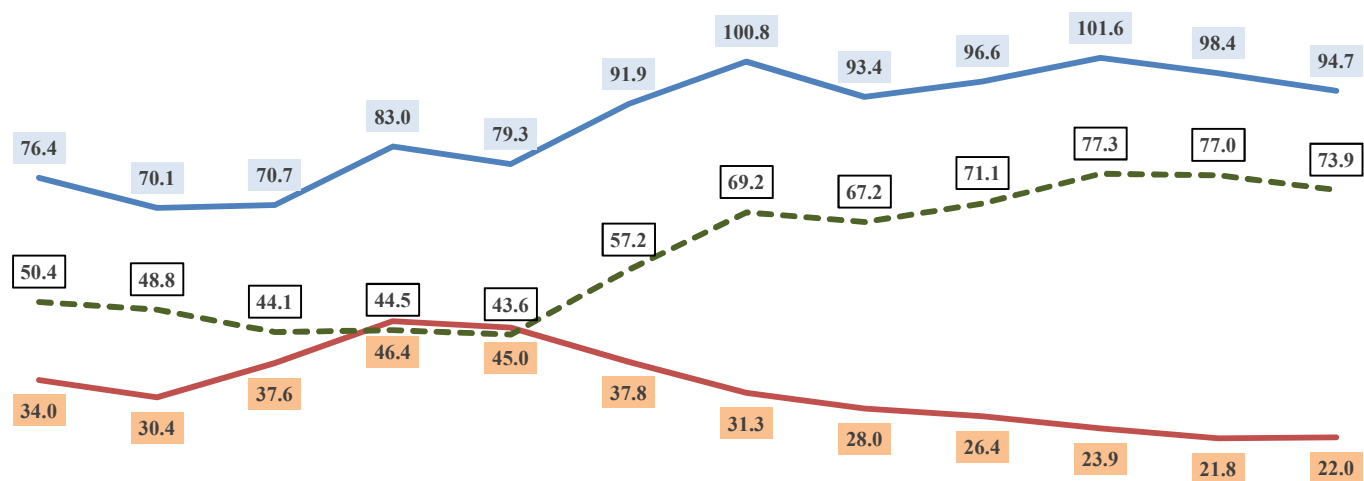
	31.12.2009	31.12.2010	31.12.2011	31.12.2012	31.12.2013	31.12.2014	31.12.2015	31.12.2016	31.12.2017	31.12.2018	31.12.2019	31.08.2020
Privat	4,033	7,086	8,738	9,138	10,149	10,161	11,105	11,098	11,447	11,446	11,304	11,475
JoBuxhetore	2,468	2,269	3,516	3,688	5,026	2,964	2,981	5,776	7,904	9,183	10,947	12,719
Familjare	18,953	27,366	38,104	45,304	52,313	55,591	52,802	51,583	50,756	48,111	46,641	46,064
Buxhetore	988	1,538	2,841	3,223	3,886	2,691	1,915	2,264	2,741	3,157	3,681	3,888
<b>Total</b>	<b>26,442</b>	<b>38,260</b>	<b>53,198</b>	<b>61,353</b>	<b>71,374</b>	<b>71,406</b>	<b>68,803</b>	<b>70,720</b>	<b>72,849</b>	<b>71,897</b>	<b>72,574</b>	<b>74,145</b>

**Burimi: FSHU sha / (OSHEE Group sha)**



	2009	2010	2011	2012	2013	2014	2015	2016	2017	2018	2019	2020 (8-M)
Arketimi	76.4	70.1	70.7	83.0	79.3	91.9	100.8	93.4	96.6	101.6	98.4	94.7
Humbja	34.0	30.4	37.6	46.4	45.0	37.8	31.3	28.0	26.4	23.9	21.8	22.0
Efektiviteti	50.4	48.8	44.1	44.5	43.6	57.2	69.2	67.2	71.1	77.3	77.0	73.9

**Efektiviteti i shitjeve ne Sistemin e Shperndarjes (%)  
2009-2020**



	2009	2010	2011	2012	2013	2014	2015	2016	2017	2018	2019	2020 (8-M)
Arketimi	76.4	70.1	70.7	83.0	79.3	91.9	100.8	93.4	96.6	101.6	98.4	94.7
Humbja	34.0	30.4	37.6	46.4	45.0	37.8	31.3	28.0	26.4	23.9	21.8	22.0
Efektiviteti	50.4	48.8	44.1	44.5	43.6	57.2	69.2	67.2	71.1	77.3	77.0	73.9

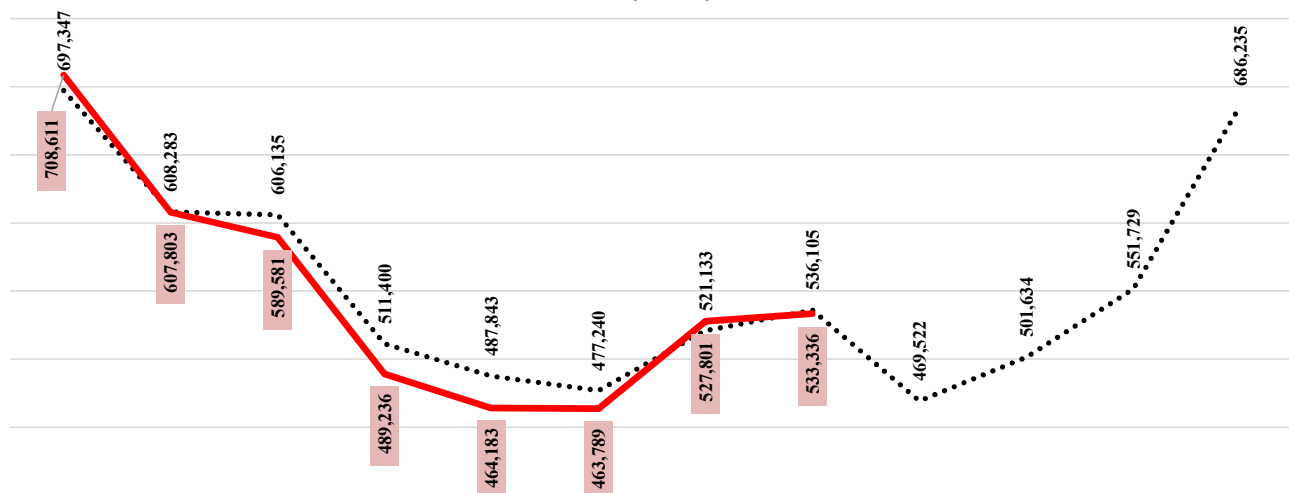
**Energji Totale ne Operatorin e Sistemit te Shperndarjes 2009-2020 ne MWh**

	Janar	Shkurt	Mars	Prill	Maj	Qershor	Korrik	Gusht	Shtator	Tetor	Nentor	Dhjetor	VITI
2009	644,987	568,719	589,279	462,709	448,118	427,694	467,863	493,772	439,604	489,635	557,554	639,797	6,229,731
2010	675,343	608,940	610,583	506,275	476,500	464,120	499,241	512,024	460,893	509,793	532,126	660,665	6,516,503
2011	708,264	623,208	634,087	536,286	533,564	495,139	545,315	567,282	512,979	551,132	619,655	710,870	7,037,781
2012	733,973	680,054	596,982	537,950	483,891	489,723	536,891	540,566	469,527	484,706	548,289	749,398	6,851,949
2013	743,846	665,392	673,578	545,600	502,945	511,390	546,696	565,789	493,056	532,555	589,808	774,403	7,145,060
2014	733,468	631,678	645,837	578,948	541,016	501,088	530,554	556,098	492,427	537,280	546,419	640,431	6,935,244
2015	686,041	591,978	594,775	514,282	472,405	465,730	536,160	529,208	459,012	476,969	519,281	649,026	6,494,867
2016	671,884	559,772	573,419	469,803	477,468	463,248	509,916	514,034	451,153	480,236	540,024	688,760	6,399,717
2017	715,886	562,270	545,214	493,731	475,055	485,386	529,805	543,145	451,103	482,629	546,256	667,841	6,498,322
2018	659,778	590,823	597,595	468,417	467,468	468,885	508,892	539,134	465,468	471,407	517,882	681,162	6,436,911
2019	735,813	586,992	559,331	500,485	501,061	500,729	533,842	565,788	471,684	472,833	507,920	639,953	6,576,432
2020	708,611	607,803	589,581	489,236	464,183	463,789	527,801	533,336					

	Janar	Shkurt	Mars	Prill	Maj	Qershor	Korrik	Gusht	Shtator	Tetor	Nentor	Dhjetor
Mesatarja	697,347	608,283	606,135	511,400	487,843	477,240	521,133	536,105	469,522	501,634	551,729	686,235
2020	708,611	607,803	589,581	489,236	464,183	463,789	527,801	533,336				
Diferenca	11,264	(480)	(16,554)	(22,164)	(23,660)	(13,452)	6,668	(2,770)				

Burimi OSHEE sha

**MESATARJA 10 VJEÇARE E ENERGJISË TOTALE NË RRJETIN E SHPËRNDARJES SIPAS MUAJVE TË VITIT (MWh)**



	Janar	Shkurt	Mars	Prill	Maj	Qershor	Korrik	Gusht	Shtator	Tetor	Nentor	Dhjetor
..... Mesatarja	697,347	608,283	606,135	511,400	487,843	477,240	521,133	536,105	469,522	501,634	551,729	686,235
— 2020	708,611	607,803	589,581	489,236	464,183	463,789	527,801	533,336				

**Burimi: OSSH sha; FSHU sha; FTL sha / (OSHEE Group sha)**

NR	KLIENDET (TL) "KUALIFIKUAR"	KLIENDET NË TL "KUALIFIKUAR" PER VITIN 2020												
		Energjia e faturuar ne [MWh]												
		Janar	Shkurt	Mars	Prill	Maj	Qershor	Korrik	Gusht	Shtator	Tetor	Nentor	Dhjetor	Totali [MWh]
1	N/ST i GSA EL 110kV-T1/694	91	112	108	249	7,828	8,188	8,820	8,737				34,131	
2	N/ST i GSA EL 110kV-T2/960	0	0	0	0	0	0						0	
3	TEC Ballsh	78	72	74	67	61	56	56	56				520	
4	Titan T1,T2	5,181	8,943	8,934	3,396	6,808	8,746	3,750	9,679				55,439	
5	FERROKROM	6,659	6,474	6,657	6,468	6,819	6,670	7,076	6,997				53,820	
6	FUSHE KRUIJE 220kV-T2/058	8,539	4,098	6,023	6,012	12,834	12,155	12,594	9,226				71,480	
7	N/ST 220/6,3Colacent-T1/336	849	1,089	824	831	1,320	1,254	1,191	1,060				8,418	
8	EL220-L220KURUM/337	14,170	27,621	24,147	18,114	27,047	28,061	29,434	29,610				198,204	
9	Lajthiza T1/742	34	326	351	242	359	338	423	425				2,499	
10	F.Arrez-T3/653	1,436	1,399	1,499	1,363	1,298	1,035	1,368	1,413				10,811	
11	N/ST i AES EL 110kV-T1/690	3,745	3,471	3,647	3,498	3,627	3,464	1,525	3,692				26,671	
12	N/ST I AES EL 110kV-T2/692	3,784	3,453	3,651	3,502	3,631	3,475	5,790	3,691				30,977	
13	ENERGJI ASHTA ( ASHTA 1) Konsum	0	0	0	0								0	
14	ENERGJI ASHTA ( ASHTA 2) Konsum	0	0	0	0								0	
15	ENERGJI ULEZ ( ULEZ ) Konsum	6	23	3	0	25	12	16	34				119	
16	ENERGJI SHKOPET ( SHKOPET ) Konsum	0	0	0	0								0	
17	ENERGJI BISTRICE ( BISTRICE ) Konsum	0	0	0	0								0	
18	ENERGJI PESHQESH ( AYEN ) Konsum	35	2	7	31	17	30	37	34				193	
19	ENERGJI FANG ( AYEN ) Konsum	41	27	26	35	25	29	34	34				251	
20	ENERGJI BANJA ( DEVOLL HPP) Konsum	21	19	17	19	30	27	23	22				179	
21	ENERGJI HEC MOGLICE ( DEVOLL HPP) Konsum	381	330	306	270	251	205	154	177				2,074	
	<b>Totali mujor</b>	<b>45,052</b>	<b>57,459</b>	<b>56,272</b>	<b>44,096</b>	<b>71,979</b>	<b>73,745</b>	<b>72,291</b>	<b>74,889</b>	<b>0</b>	<b>0</b>	<b>0</b>	<b>495,784</b>	

pa rakorduar nga OST

**Burimi: OST sha**

**Devijimet ne Programin e Interkoneksionit 2020 (MWh)**

*Minus = Hyrje*

*Plus = Dalje*

<b>Data</b>	Janar	Shkurt	Mars	Prill	Maj	Qershori	Korrik	Gusht	Shtator	Tetor	Nentor	Dhjetor	<b>2020</b>
1	131	159	-428	-108	135	54	68	74					84
2	406	567	1225	28	256	6	56	80					2,625
3	216	35	1211	-44	420	59	52	82					2,033
4	120	227	782	-26	154	86	20	20					1,382
5	148	1019	1384	182	99	80	95	-10					2,997
6	51	289	50	50	10	42	55	106					653
7	-22	17	1361	14	8	75	38	74					1,565
8	-61	667	1340	45	77	68	88	109					2,334
9	-69	-93	637	90	140	64	108	98					975
10	-69	-295	471	100	34	89	87	39					456
11	-28	458	-204	95	78	37	72	53					560
12	-67	1211	-67	96	73	64	73	58					1,440
13	-13	601	237	44	39	38	90	54					1,089
14	-40	127	335	-6	30	16	66	35					563
15	-78	179	390	115	-6	75	87	66					827
16	-87	701	393	88	44	139	30	52					1,360
17	-14	617	174	69	74	18	34	58					1,030
18	-17	848	8	116	65	72	0	9					1,100
19	-130	423	44	214	49	85	83	40					808
20	252	489	110	124	40	68	110	76					1,269
21	109	864	206	69	51	33	43	99					1,474
22	-112	171	310	107	66	57	110	45					754
23	77	204	4	74	95	27	91	86					658
24	322	349	8	29	127	94	65	42					1,036
25	-10	1010	-18	56	11	108	55	28					1,241
26	80	1098	-28	23	58	109	63	-62					1,340
27	1095	945	2	0	61	140	35	48					2,326
28	843	334	-13	75	94	93	24	63					1,514
29	1582	558	123	103	138	56	89	59					2,706
30	1851		3	36	115	42	32	22					2,101
31	512		-6		110	0	65	7					689
<b>Total</b>	6977	13,778	10045	1859	2746	1994	1983	1610					40,991

**Burimi OST sha**

**Tabela me te dhenat e Alokimit te ATC 2020**

Ankandi	Periudha	Shqiperi - Mali Zi						Shqiperi - Greqi						Shqiperi - Kosove								
		Ankand		Ankand		Cmimi Ankandit		Ankand		Ankand		Cmimi Ankandit		Ankand		Ankand		Cmimi Ankandit				
		Export	Import	Export	Import	Export	Import	Export	Import	Export	Import	Export	Import	Export	Import	Export	Import	Export	Import			
		[ MW ]	[ MW ]	[ MW ]	[ MW ]	[ Euro/MWh ]	[ Euro/MWh ]	[ MW ]	[ MW ]	[ MW ]	[ MW ]	[ Euro/MWh ]	[ Euro/MWh ]	[ MW ]	[ MW ]	[ MW ]	[ MW ]	[ Euro/MWh ]	[ Euro/MWh ]			
Janar	01.01.2020-31.01.2020	250	250	250	250	0.07	1.11	100	100	99	100	4.87	0.34	125	125	125	125	0.12	0.48			
Shkurt	01.02.2020-29.02.2020	200	250	199	250	0.06	1.86	125	125	125	125	2.67	0.61	125	125	125	125	0.31	1.49			
Mars	01.03.2020-15.03.2020	100	100	99	100	0.12	3.16	100	100	100	99	3.52	0.09	125	125	125	125	0.1	1.33			
	16.03.2020-20.03.2021	0	0	0	0										50		50		2.94			
	21.03.2020-15.03.2022	100	100	99	100	0.12	3.16								125		125		1.24			
Prill	01.04.2020-03.04.2020	0	0	0	0	0	0	100	100	100	100	5.91	0.06	105	105	105	105	0.16	0.15			
	04.04.2020-13.04.2020																					
	14.04.2020-30.04.2020	100	100	100	100	0.24	2.38													105	105	105
Maj	01.05.2020-31.05.2020	100	100	100	100	0.28	4.3	50	100	50	100	3.06	0.12									
	01.05.2020-15.05.2020							50		50		2.35		105	105	105	105	0.1	4.3			
	16.05.2020-24.05.2020							0		0		2.35		105	105	105	105	0.1	2.2			
	25.05.2020-29.05.2020							0		0		2.35										
	30.05.2020-31.05.2020							50		50		2.35										
Qershor	01.06.2020-14.06.2020	100	100	100	100	0.15	1.91	100	100	100	100	2.09	0.32	105	75	105	75	0.03	2.55			
	15.06.2020-29.06.2020							0	0	0	0	0	0	105	75	105	75	0.12	3.39			
	30.06.2020-30.06.2020							100	100	100	100	2.09	0.32									
Korrik	01.07.2020-31.07.2020	100	100	100	100	0.05	1.97	150	150	150	150	1.42	0.15	105	105	105	105	0.11	2.05			
Gusht	01.08.2020-31.08.2020	100	100	100	100	0.08	1.89	100	100	100	100	1.89	0.18	105	105	105	105	0.17	1.69			
	01.08.2020-14.08.2020							50	50	50	50	1.32	0.10									
	15.08.2020-17.08.2020							0	0	0	0	1.32	0.10									
	18.08.2020-31.08.2020							50	50	50	50	1.32	0.10									

**Burimi: OST sha**



FATURAT E TRANSMETIMIT VITI 2020

VITI 2020	FTL (OSHEE Grup)	GSA	GEN - I	KURUM NV	KURUM Konsumator	AVEN AS ENERGJI NV	DEVOLL NV	EZ-S ENERGY	ENERGIA GAS AND POWER	AES	KESH	TOTALI Mujor
	(Leke)	(Leke)	(Leke)	(Leke)	(Leke)	(Leke)	(Leke)	(Leke)	(Leke)	(Leke)	(Leke)	(Mleke)
Janar	497,779,050.000	9,050,332.500	3,886,035.000	4,222.500	10,627,665.000	57,330.000	16,102.500	1,247,227.500	349,290.000	11,458,350.000	602,985.000	535.079
Shkurt	416,964,963.750	6,115,702.500	6,707,392.500	17,175.000	20,715,757.500	21,870.000	14,160.000	1,209,112.500	392,235.000	10,848,682.500	518,355.000	463.525
Mars	391,904,388.750	7,499,568.000	6,700,680.000	1,897.500	18,110,092.500	24,900.000	12,885.000	1,453,302.750	416,490.000	11,434,185.000	497,250.000	438.056
Prill	323,064,648.000	6,270,102.000	2,547,067.500	199.500	13,585,439.250	48,838.750	14,178.750	2,511,851.250	420,909.000	10,953,210.750	403,908.000	359.820
Maj	309,736,668.750	17,629,089.750	5,106,029.250	19,054.500	20,285,395.500	31,410.000	22,521.000	2,759,776.500	453,747.000	11,420,514.750	364,624.500	367.829
Qershor	320,839,226.250	17,266,233.750	6,559,680.000	8,966.250	21,045,716.250	43,886.250	19,876.500	2,705,221.500	592,162.500	11,095,894.500	393,114.750	380.570
Korrik	375,440,419.500	18,188,058.750	2,812,467.000	12,105.000	22,075,260.750	53,565.750	46,560.750	3,083,704.500	838,184.250	11,787,897.000	444,531.000	434.783
Gusht	383,698,971.000	15,488,507.250	7,259,574.000	22,207,518.000	25,706.250	51,209.250	149,649.000	3,164,778.000	698,480.250	11,807,196.750	421,258.500	444.973
Shtator												0.000
Tetor												0.000
Nentor												0.000
Dhjetor												0.000
SHUMA	3,019,428,336.000	97,507,594.500	41,578,925.250	22,271,138.250	126,471,033.000	333,030.000	295,933.500	18,134,974.500	4,161,498.000	90,805,931.250	3,646,026.750	3,424.634

FATURAT E TRANSMETIMIT

VITI 2020	FTL (OSHEE Grup)	K.Kualifikuar	KESH	TOTALI
	(Mleke)	(Mleke)	(Mleke)	(Mleke)
Janar	497.779	36.697	0.603	535.079
Shkurt	416.965	46.042	0.518	463.525
Mars	391.904	45.654	0.497	438.056
Prill	323.065	36.352	0.404	359.820
Maj	309.737	57.728	0.365	367.829
Qershor	320.839	59.338	0.393	380.570
Korrik	375.440	58.898	0.445	434.783
Gusht	383.699	60.853	0.421	444.973
Shtator	0.000	0.000	0.000	0.000
Tetor	0.000	0.000	0.000	0.000
Nentor	0.000	0.000	0.000	0.000
Dhjetor	0.000	0.000	0.000	0.000
SHUMA	3,019.428	401.560	3.646	3,424.634

0.000

Pale Pergjegjese Balancuese	JANAR		SHKURT		MARS		PRILL		MAJ		QERSHOR		KORRIK		GUSHT		TOTALI 2020	
	Dis. Negative [MWh]	Dis. Positive [MWh]	Dis. Negative [MWh]	Dis. Positive [MWh]	Dis. Negative [MWh]	Dis. Positive [MWh]	Dis. Negative [MWh]	Dis. Positive [MWh]	Dis. Negative [MWh]	Dis. Positive [MWh]	Dis. Negative [MWh]	Dis. Positive [MWh]	Dis. Negative [MWh]	Dis. Positive [MWh]	Dis. Negative [MWh]	Dis. Positive [MWh]	Dis. Negative [MWh]	Dis. Positive [MWh]
KURUM	996.127	551.557	624.970	1.204.556	780.967	829.470	1.204.188	277.073	1.888.219	499.320	1.730.177	748.606	1.444.245	545.866	1.246.566	1.323.335	9.915.46	5.979.78
DEVOLL HP	36.193	15.971	9.172	6.782	182.399	692.346	22.347	95.411	69.887	137.117	61.908	65.166	67.572	33.629	46.827	73.648	496.30	1.120.07
ENERGIA GAS & POWER	427.313	1.598	482.977		513.618	0.296	517.226	0.014	568.996	-	745.550	-	1.073.579	-	621.403	20.096	4.950.66	22.00
AYEN AS ENERGJI	97.957	117.109	25.777	116.198	32.974	118.325	60.977	31.097	55.199	104.707	133.597	24.390	67.227	24.169	65.981	43.373	539.69	579.37
GSA	457.930	1.388.823	297.365	480.105	630.436	909.041	204.271	942.149	720.830	1.239.904	476.732	987.213	1.360.338	580.811	933.484	1.130.110	5.081.39	7.658.16
GEN-I	315.849	93.470	282.178	217.992	323.035	354.794	360.853	96.762	536.166	268.127	776.285	240.045	520.277	62.321	928.956	515.524	4.043.60	1.849.04
AES	488.333	282.529	640.888	95.975	1.370.150	146.569	673.827	189.547	1.200.269	100.916	1.259.758	113.232	1.625.764	76.568	1.747.125	124.197	9.006.11	1.129.53
ASHTA	760.452	836.474	232.740	717.092	1.014.035	1.055.829	1.045.602	1.285.420	801.668	1.012.965	523.424	840.780	650.013	663.187	572.497	456.322	5.600.43	6.868.07
FTL (OSHEE Grup)	3,277.596	23,604.773	7,904.506	16,208.929	5,633.073	28,846.582	7,229.118	14,410.019	5,541.415	10,483.468	4,627.522	7,354.912	2,992.106	10,963.971	2,424.156	12,833.26	39,629.49	124,705.91
GETA	-	75.000															-	75.00
KESH (Pale Pergjegjese Balancuese)	58.417	15.137	12.161	72.878	6.994	120.390	-	250.265	0.505	197.688	0.854	120.781	0.345	138.238	0.060	139.702	79.34	1,055.08
EZ-5 ENERGY (KASTRATI ENERGY)	235.480	63.807	169.390	61.936	285.309	100.971	387.696	111.261	441.369	99.267	402.412	98.450	386.822	149.816	303.282	91.178	2,611.76	776.69
BYLLIS Tec Ballsh (Pa kontrate Furnizimi)	77.885	-	71.891	-	73.797	-	66.524		60.909	-	56.193	-	56.254		56.342		519.79	-
NOA									22.000	20.000							22.00	20.00
ENER TRADE (PROGRAM SKEDULIMI)											27.000						27.00	-
OST - HUMBJET ne Transmetim	1,566.600	674.876	4,160.392	679.105	2,843.796	3,907.383	2,103.757	679.633	664.753	1,461.370	825.013	802.772	1,550.753	765.076	1,413.897	676.919	15,128.96	9,647.13
Ofruesi i Sherbimit te Balancimit	Ujje Gjenerimi [MWh]	Rritje Gjenerimi [MWh]	Ujje Gjenerimi [MWh]	Rritje Gjenerimi [MWh]	Ujje Gjenerimi [MWh]	Rritje Gjenerimi [MWh]	Ujje Gjenerimi [MWh]	Rritje Gjenerimi [MWh]	Ujje Gjenerimi [MWh]	Rritje Gjenerimi [MWh]	Ujje Gjenerimi [MWh]	Rritje Gjenerimi [MWh]	Ujje Gjenerimi [MWh]	Rritje Gjenerimi [MWh]	Ujje Gjenerimi [MWh]	Rritje Gjenerimi [MWh]	Ujje Gjenerimi [MWh]	Rritje Gjenerimi [MWh]
KESH	14,696.245	3,591.946	3,146.958	5,271.060	18,049.610	4,745.554	12,456.671	8,628.036	9,883.210	6,362.737	6,413.759	6,782.133	7,733.368	5,661.070	10,636.141	3,207.238	83,015.96	44,249.77
TOTALI	23,492.38	31,313.07	18,061.36	25,132.61	31,740.19	41,827.55	26,333.06	26,996.69	22,455.395	21,987.586	18,060.18	18,178.48	19,528.66	19,664.72	20,996.72	20,634.90	180,667.95	205,735.60
Disbalancat mujore [MWh]		7,820.69		7,071.24		10,087.36		663.63		(467.809)		118.30		136.06		(361.82)		25,067.66

Regjistri Pjesmarresve te Tregut ( Gusht 2020)		PRODHUES		P
		TREGTUES		T
		FURNIZUES		F
		FURNIZUES I SHËRBIMIT UNIVERSAL		FSHU
		SHPERNDARJE		SH
Nr	Emri i Subjektit	EIC Code	data e regjistrimit	Roli ne TEE
1	Albanian Energy Supplier	54X-AEG-02-1603G	26.05.2015	T; F
2	AXPO Albania	23X--150330-AA-K	28.1.2020	T; F
3	Ayen AS Energji	23X--150416-A--N	17.12.2014	P; T; F
4	Ayen Energy Trading	23X--140426-AY-W	04.05.2014	T; F
5	Danske Commodities Albania	23X--121120DCALG	30.10.2012	T; F
6	Devoll Hydropower	23X--150409-DHP5	11.06.2015	T; F
7	Energija doo Veternik	54X-EDOOV-15-020	15.12.2015	T; F
8	Energji Ashta	54X-HECASHTA-059	25.05.2012	P
9	Energy Supply-AL	34X-0000000017-C	15.05.2013	T; F
10	Erdat Lura	54X-HEC-LURA-069	17.09.2013	P
11	GEN-I Tirana	23X---120709GEN0	31.01.2011	T; F
12	Gjo-Spa Power	54X-HEC-LAPAJ075	17.09.2013	P
13	Green Energy Trading Albania	23X--150702GE--3	01.07.2015	T
14	Grupi Sistemeve Automatike	22XGSA-----N	09.05.2011	T; F
15	Korporata Elektroenergjitike Shqiptare	23X--130918APC-M	25.04.2011	P; T
16	KURUM International	23X--131115KI--1	17.12.2013	P; T; F
17	NOA Energy Trade	23X--150630-NE-6	10.03.2015	T; F
18	Operatori i Sistemit të Shpërndarjes - OSSH sh.a.	54X-101010IOSS0U	19.02.2020	SH
19	Stravaj Energy	54X-STRAVAJ-E086	25.04.2014	P; T
20	WENERG	54X-WENERG---10E	10.06.2015	P
21	YLLIAD	29XYLLIAD-AL---W	03.03.2011	T
22	Energy Market Albania	54X-ENMARKETAL99	23.03.2017	T
23	Grid Energy	54X-GRID-ENERGYR	05.04.2017	T; F
24	Energy Financing Team Tirana	54X-EFT-TIRANA-V	24.08.2017	T; F
25	Alpiq Energy Albania	23X--141204AEA-T	29.04.2011	T; F
26	URADRIN	54X-100ID101218J	10.08.2018	T
27	Energia Gas and Power Albania shpk	23x-150309-LT-Y	22.10.2018	T; F
28	RENRGY Trading Group	54X-10IRN102618R	12.11.2018	T,F
29	Ener Trade shpk	54X-10 IET091118	21.12.2018	T; F
30	Power and Gas Operations	54X-10IPG2307196	23.07.2019	T
31	ENSCO Trading (Albania) sh.p.k	54X-110IESA1019G	02.12.2019	T
32	KESH sh.a	23X--130918APC-M	16.12.2019	F
33	Furnizuesi i Tregut të Lirë - FTL sh.a.	54X-1010IFT0220P	19.02.2020	T; F
34	Furnizuesi i Shërbimit Universal - FSHU sh.a.	54X-0101IFSH022Q	19.02.2020	F
35	EZ-5 Energy shpk	54X-11LKE250319U	25.03.2019	T;F
Burimi OST sha				



			Blerje Aven Energy Trading						-163			-163	
			Blerje GEN4	-677	-8,610	-5,434			-8,016			-9,426	
			Blerje Ener Trade						-14,004	-15,510	-99	-29,522	
			Shihte Ener Trade						3,585	1,276	43	4,864	
			Shihte GEN4	16,097	27,374	143	4,025			223	43	42,505	
			Total transaksione	41,422	26,700	46,611	37,119	21,222	16,721	14,398	12,267	226,721	
11	ALPIQ	Shkembime Cross-Border	AL-GR Greece - IN									-130	
			AL-RS (RS) Kosovo - IN										-312
			AL-ME Montë Negro - IN	-4,226	-11,551	-8,071	-6,391	-3,181	-6,161	-6,161	-5,425	-2,063	-47,469
			Total IN	-4,226	-11,863	-8,071	-6,391	-3,181	-6,161	-6,161	-5,425	-2,063	-47,511
			AL-GR Greece - OUT	3,458	11,961	8,071	6,370	3,111	5,870	5,870	5,273	2,063	46,817
			AL-RS (RS) Kosovo - OUT	768	0	0	0	0	0	0	0	0	768
			AL-ME Montë Negro - OUT	130	0	0	83	70	291	150	0	0	726
			Total OUT	4,356	11,863	8,071	6,391	3,181	6,161	5,425	2,063	2,063	47,511
			Shihte										0
			Total transaksione	0	0	0	0	0	0	0	0	0	0
12	ANFO ALBANIA	Shkembime Cross-Border	AL-GR Greece - IN									-200	
			AL-RS (RS) Kosovo - IN										-12,529
			AL-ME Montë Negro - IN	-2,274		-73	-780						-8,482
			Total IN	-2,274	-4,664	-73	-3,600	-780		-4,485	-5,335		-21,211
			AL-GR Greece - OUT	2,274	4,664	73	3,600	780		4,283	5,335		21,011
			AL-RS (RS) Kosovo - OUT	0	0	0	0	0		0	0		0
			AL-ME Montë Negro - OUT	0	0	0	0	0		200	0		200
			Total OUT	2,274	4,664	73	3,600	780		4,485	5,335		21,211
			Shihte										0
			Total transaksione	0	0	0	0	0	0	0	0	0	0
13	EFT Energy Financing Tram) TIRANA	Shkembime Cross-Border	AL-GR Greece - IN	-3,020	-30	-97	-178	-27	-143	-861	-120	-4,684	
			AL-RS (RS) Kosovo - IN	-27,927	-44,470	-44,777	-38,919	-31,995	-16,966	-37,670	-25,334	-267,858	
			AL-ME Montë Negro - IN	3,996	-8,912	-23,144	-3,900	-2,444	-2,810	-2,011	-10,009	-37,423	
			Total IN	-31,843	-53,412	-47,818	-42,897	-38,466	-19,919	-43,544	-38,466	-110,165	
			AL-GR Greece - OUT	14,485	39,549	30,122	32,350	27,506	9,782	12,921	32,027	198,748	
			AL-RS (RS) Kosovo - OUT	3,773	817	588	983	1,597	40	863	1,226	9,889	
			AL-ME Montë Negro - OUT	441	393	1,152	682	472	998	2,413	2,413	6,531	
			Total OUT	18,701	40,757	31,862	34,003	29,575	10,820	13,784	35,666	216,168	
			Shihte FTL	8,808	2,211	14,250	8,994	7,233	9,600	29,760			80,856
			Blerje Aven Energy Trading	-9,794	-2,044	-11,004		-1,342	-501				-24,681
		Shihte AES	13,584	12,528	12,716							38,822	
		Total transaksione	12,642	12,658	15,956	8,994	5,891	9,099	29,760	0	0	94,997	
14	Grid Energy	Shkembime Cross-Border	AL-GR Greece - IN									0	
			AL-RS (RS) Kosovo - IN										0
			AL-ME Montë Negro - IN										0
			Total IN	0	0	0	0	0	0	0	0	0	0
			AL-GR Greece - OUT										0
			AL-RS (RS) Kosovo - OUT										0
			AL-ME Montë Negro - OUT										0
			Total OUT	0	0	0	0	0	0	0	0	0	0
			Shihte FTL	0	5,040	0	0	4,200	0	0	0	0	9,240
			Blerje Aven Energy Trading	0	-5,040	0	0	-4,200	0	0	0	0	-9,240
		Total transaksione	0	0	0	0	0	0	0	0	0	0	
15	AES (Albanian Energy Supplier)	Shkembime Cross-Border	AL-GR Greece - IN									0	
			AL-RS (RS) Kosovo - IN										0
			AL-ME Montë Negro - IN										0
			Total IN	0	0	0	0	0	0	0	0	0	0
			AL-GR Greece - OUT										0
			AL-RS (RS) Kosovo - OUT										0
			AL-ME Montë Negro - OUT										0
			Total OUT	0	0	0	0	0	0	0	0	0	0
			Shihte Komartareve te Kualifikuar	15,072	13,920	14,022	14,120	14,128	13,648	14,168	14,120	113,198	
			Blerje Danske Commodities	-1,488	-1,392	-1,486	-1,440	-7,808	-1,440	-1,488	-1,488	-1,488	-18,030
		Blerje Aven Energy Trading			174							174	
		Blerje GSA				-12,680	-6,320	-12,208	-6,320	-6,296	-43,824		
		Blerje Ener Trade							-6,360	-6,336	-12,696		
		Blerje EFT TIRANA	-13,584	-12,528	-12,710							-38,822	
		Total transaksione	0	0	0	0	0	0	0	0	0	0	
16	GETA (GREEN ENERGY TRADING ALBANIA)	Shkembime Cross-Border	AL-GR Greece - IN									-823	
			AL-RS (RS) Kosovo - IN										-46,410
			AL-ME Montë Negro - IN	-15,916	-16,844	-19,151	-11,707	-16,110	-10,764	-9,042	-8,700		-107,476
			Total IN	-32,478	-19,484	-28,426	-11,708	-17,336	-16,298	-15,151	-43,778		-154,709
			AL-GR Greece - OUT	30,843	19,484	28,206	11,707	17,517	16,473	16,506	13,440		154,862
			AL-RS (RS) Kosovo - OUT	0	0	0	0	0	0	0	0		0
			AL-ME Montë Negro - OUT	0	0	220	21	350	150	0	0		771
			Total OUT	30,843	19,484	28,426	11,728	17,817	16,823	16,654	13,440		155,353
			Blerje Aven Energy Trading	-360				-181		-525	-30		-441
			Blerje Ener Trade										-564
		Blerje ReNRGY Trading										-70	
		Blerje GSA										-1,464	
		Shihte GSA	1,920									1,920	
		Total transaksione	1,560	0	0	0	-181	-525	-1,503	-70		-719	
17	ReNRGY	Shkembime Cross-Border	AL-GR Greece - IN									0	
			AL-RS (RS) Kosovo - IN	-6,227	-5,277	-5,681	-10,000	-13,994	-9,506	-6,273	-19,748		-76,788
			AL-ME Montë Negro - IN	-7,140	-2,624	-2,720	-1,616	-9,130	-4,850	-2,100	-5,952		-34,994
			Total IN	-13,667	-7,901	-8,361	-11,616	-23,124	-9,966	-10,373	-25,700		-111,772
			AL-GR Greece - OUT	1,235	0	0	0	4,856	1,468	3,985	5,923		17,467
			AL-RS (RS) Kosovo - OUT	0	11	0	0	0	0	0	0		11
			AL-ME Montë Negro - OUT	0	0	0	0	0	0	0	0		0
			Total OUT	1,235	11	0	0	4,856	1,468	3,985	5,923		17,478
			Shihte OST		1,152		1,296	2,322	2,734	1,050	1,917		10,381
			Shihte FTL	13,512	6,138	9,951	10,400	16,042	5,706	24,552	86,355		86,355
		Blerje KESH										-6,762	
		Shihte KESH							5,340			5,340	
		Shihte GETA								70		70	
		Blerje Danske Commodities	-1,080									-1,080	
		Total transaksione	12,432	7,200	9,951	11,606	18,274	8,494	6,290	19,777		94,366	
18	ENERGIA GAS AND POWER ALBANIA	Shkembime Cross-Border	AL-GR Greece - IN									0	
			AL-RS (RS) Kosovo - IN										0
			AL-ME Montë Negro - IN	-7,811	-10,371	-7,781	-7,244	-8,358	-4,149	-10,578	-7,770		-64,062
			Total IN	-7,811	-10,371	-7,781	-7,244	-8,358	-4,149	-10,578	-7,770		-64,062
			AL-GR Greece - OUT	7,771	10,311	7,739	7,200	8,322	4,105	10,534	7,440		63,442
			AL-RS (RS) Kosovo - OUT	0	0	0	0	0	0	0	0		0
			AL-ME Montë Negro - OUT	0	0	0	0	0	0	0	0		0
			Total OUT	7,771	10,311	7,739	7,200	8,322	4,105	10,534	7,440		63,442
			Shihte Komartareve te Kualifikuar	40	40	42	44	36	44	44	44		330
			Total transaksione	40	40	42	44	36	44	44	44		330
20	EZ-(KASTRATI) ENERGY	Shkembime Cross-Border	AL-GR Greece - IN									0	
			AL-RS (RS) Kosovo - IN										0
			AL-ME Montë Negro - IN										0
			Total IN	0	0	0	0	0	0	0	0	0	0
			AL-GR Greece - OUT										0
			AL-RS (RS) Kosovo - OUT										0
			AL-ME Montë Negro - OUT										0
			Total OUT	0	0	0	0	0	0	0	0	0	0
			Shihte Komartareve te Kualifikuar	1,491.3	1,584.7	1,753.4	3,072.7	3,337.6	3,303.0	3,874.6	4,007.6		22,344.9
			Blerje Aven AS Energi	-1,491.3	-1,584.7	-1,753.4	-3,072.7	-3,337.6	-3,303.0	-3,874.6	-4,007.6		-22,344.9
		Total transaksione	0	0	0	0	0	0	0	0	0	0	
21	ENSCO Trading	Shkembime Cross-Border	AL-GR										

23	KESH	Border	AL-GR Greece - OUT	0	0	0	0	0	0	0	0	
			AL-RS (S) Kosovo - OUT	0	0	0	0	1,900	1,150	0	75	3,005
			AL-ME Montenegro - OUT	0	0	0	0	0	0	0	2,700	2,700
			<b>Total OUT</b>	<b>0</b>	<b>0</b>	<b>0</b>	<b>0</b>	<b>1,900</b>	<b>1,150</b>	<b>0</b>	<b>3,455</b>	<b>6,505</b>
		Shtetje OST	12,960				1,406				14,866	
		Shtetje Danske Commodities						15,600			15,600	
		Shtetje GSA						6,750	7,855		14,605	
		Shtetje Emer Trade						2,700	1,215		3,915	
		Shtetje Emer Trade								1,592	1,592	
		Blerje ENER TRADE					-2,400	-1,700			-5,100	
		Blerje Danske Commodities						-1,134	-1,752		-2,886	
		Blerje GSA						-1,890	-8,610		-10,500	
		Blerje DEVELOP							-1,320		-1,320	
		Blerje GENI							-8,543		-8,543	
		Blerje NOA Energy							-1,620		-1,620	
		Blerje ReNRGY							-5,340	6,762	1,422	
		<b>Total transaksione</b>	<b>12,960</b>	<b>0</b>	<b>0</b>	<b>0</b>	<b>1,406</b>	<b>-5,424</b>	<b>-4,856</b>	<b>17,424</b>	<b>21,230</b>	

**Shënime:**

1. Konsolidimet e kualifikuar për secilin subjekt ndryshojnë çdo muaj në varesi të kontratave të nënshkruara nga të dyja palët.
2. Shënja ( - ) është përdorur për energjinë që bënë në rrjet (blerje + import) ndërsa shënja ( + ) për energjinë që del nga rrjeti (shitje + eksport).
3. Çdo vlerë e sipërbënuar është e nominuar - me program (jo faktike me matje)

Bjerrjet e FTL shtetërisht e energjisë elektrike në tregun e hapur për vitin 2020					
FTL sh.k.					
Muaji	Kompanitë fituese	Periudha	Suma (MWh)	Cmimi (Euro/MWh)	Vlera pa TVSH (Euro)
JANAR	AVEN ENERGY TRADING	01.01.2020 - 09.01.2020	7.244	57,89	425.144
	ENER TRADE SH.P.K.	01.01.2020 - 09.01.2020	1.080	59,60	64.530
	RENGRY TRADING GROUP	01.01.2020 - 09.01.2020	2.832	62,14	176.000
	NVA	01.01.2020 - 09.01.2020	8.640	63,25	546.480
	GSA sh.p.k.	01.01.2020 - 09.01.2020	11.600	63,38	736.000
	EFF AG	01.01.2020 - 09.01.2020	15.424	63,70	980.504
	NOVA COMMORTIES	10.01.2020 - 19.01.2020	2.400	64,84	155.616
	Alma Energy SE	10.01.2020 - 19.01.2020	4.800	64,85	311.280
	RENGRY TRADING GROUP	10.01.2020 - 19.01.2020	7.680	66,48	510.556
	GSA sh.p.k.	10.01.2020 - 19.01.2020	17.520	66,75	1.169.640
	NVA	10.01.2020 - 19.01.2020	30.600	77,75	2.379.150
	EFF AG	10.01.2020 - 19.01.2020	4.800	66,90	321.720
	EFF AG	10.01.2020 - 19.01.2020	36.000	66,91	2.408.700
	EFF AG	20.01.2020 - 31.01.2020	92.160	67,95	6.262.272
<b>Total JANAR 2020</b>					
EFF AG	01.02.2020-07.02.2020	15.900	55,95	889.580	
GSA sh.p.k.	01.02.2020-07.02.2020	19.320	56,50	1.091.520	
Le Trading	01.02.2020-07.02.2020	8.700	64,20	558.000	
EFF AG	01.02.2020-07.02.2020	10.080	64,45	649.620	
NOVA COMMORTIES	08.02.2020-14.02.2020	1.680	44,81	75.252	
EFF AG	08.02.2020-14.02.2020	25.560	45,00	1.152.300	
DEVOLL HYDROPOWER SH.A	08.02.2020-14.02.2020	5.040	49,77	252.811	
GSA sh.p.k.	08.02.2020-14.02.2020	17.340	50,60	876.604	
RENGRY TRADING GROUP	15.02.2020-21.02.2020	168	46,00	7.728	
GSA sh.p.k.	15.02.2020-21.02.2020	168	46,00	7.728	
RENGRY TRADING GROUP	15.02.2020-21.02.2020	1.800	51,49	92.682	
GSA sh.p.k.	15.02.2020-21.02.2020	18.900	51,59	975.011	
DEVOLL HYDROPOWER SH.A	15.02.2020-21.02.2020	2.400	51,52	123.648	
Alma Energy SE	15.02.2020-21.02.2020	4.800	51,52	247.392	
Future Energy Trading&Exchange Dynamics	15.02.2020-21.02.2020	630	51,99	32.754	
NOVA COMMORTIES	15.02.2020-21.02.2020	46.800	46,83	2.191.824	
Gen Energy sh.p.k.	15.02.2020-21.02.2020	5.040	51,25	258.304	
ENER TRADE SH.P.K.	16.02.2020-21.02.2020	2.880	47,50	136.800	
Alma Energy SE	16.02.2020-21.02.2020	11.600	48,50	562.800	
RENGRY TRADING GROUP	16.02.2020-21.02.2020	864	49,79	43.011	
EFF AG	16.02.2020-21.02.2020	10.740	50,17	537.258	
ENER TRADE SH.P.K.	22.02.2020-29.02.2020	960	44,85	43.056	
DEVOLL HYDROPOWER SH.A	22.02.2020-29.02.2020	3.840	45,98	176.265	
AVEN ENERGY TRADING	22.02.2020-29.02.2020	10.560	46,21	487.632	
Alma Energy SE	22.02.2020-29.02.2020	2.880	46,60	134.208	
NOVA COMMORTIES	22.02.2020-29.02.2020	1.920	46,61	89.472	
RENGRY TRADING GROUP	22.02.2020-29.02.2020	1.072	47,75	51.008	
EFF AG	22.02.2020-29.02.2020	13.248	49,38	656.832	
Alma Energy SE	22.02.2020-29.02.2020	50.400	50,85	2.562.240	
GSA sh.p.k.	22.02.2020-29.02.2020	25.200	50,99	1.284.948	
RENGRY TRADING GROUP	22.02.2020-29.02.2020	144	51,31	7.398	
Future Energy Trading&Exchange Dynamics	22.02.2020-29.02.2020	720	51,71	37.236	
ENER TRADE SH.P.K.	22.02.2020-29.02.2020	4.320	51,85	223.920	
DEVOLL HYDROPOWER SH.A	22.02.2020-29.02.2020	1.872	51,97	97.272	
<b>Total SHKURT 2020</b>					
GSA sh.p.k.	01.03.2020-08.03.2020	18.240	44,00	802.560	
RENGRY TRADING GROUP	01.03.2020-08.03.2020	1.040	42,95	44.660	
DEVOLL HYDROPOWER SH.A	09.03.2020-15.03.2020	1.800	43,71	78.660	
EFF AG	09.03.2020-15.03.2020	25.200	44,85	1.130.220	
NOVA COMMORTIES	09.03.2020-15.03.2020	430	44,24	19.024	
GSA sh.p.k.	09.03.2020-15.03.2020	8.820	45,40	400.472	
RENGRY TRADING GROUP	09.03.2020-15.03.2020	2.520	46,17	116.364	
DEVOLL HYDROPOWER SH.A	16.03.2020-22.03.2020	5.880	42,41	249.171	
EFF AG	16.03.2020-22.03.2020	6.300	52,00	327.600	
Alma Energy SE	16.03.2020-22.03.2020	1.680	45,48	76.224	
Alma Energy SE	16.03.2020-22.03.2020	1.260	51,90	65.370	
NOVA COMMORTIES	16.03.2020-22.03.2020	840	41,36	34.752	
NVA	16.03.2020-22.03.2020	1.680	51,70	87.816	
GSA sh.p.k.	16.03.2020-22.03.2020	16.632	45,75	760.914	
GSA sh.p.k.	16.03.2020-22.03.2020	52.800	52,00	2.745.600	
Future Energy Trading&Exchange Dynamics	16.03.2020-22.03.2020	168	43,98	7.388	
Future Energy Trading&Exchange Dynamics	16.03.2020-22.03.2020	176	48,89	8.604	
Future Energy Trading&Exchange Dynamics	16.03.2020-22.03.2020	512	51,27	26.256	
GSA sh.p.k.	16.03.2020-22.03.2020	1.512	51,99	78.609	
EFF AG	16.03.2020-22.03.2020	2.520	52,00	131.640	
ENER TRADE SH.P.K.	16.03.2020-22.03.2020	7.912	52,00	411.232	
NVA	16.03.2020-22.03.2020	630	52,00	32.760	
EFF AG	23.03.2020-31.03.2020	17.340	37,50	648.000	
EFF AG	23.03.2020-31.03.2020	12.240	40,22	492.288	
DEVOLL HYDROPOWER SH.A	23.03.2020-31.03.2020	2.240	35,77	79.936	
DEVOLL HYDROPOWER SH.A	23.03.2020-31.03.2020	2.880	39,47	113.688	
NOVA COMMORTIES	23.03.2020-31.03.2020	864	34,96	30.202	
RENGRY TRADING GROUP	23.03.2020-31.03.2020	216	32,67	7.056	
RENGRY TRADING GROUP	23.03.2020-31.03.2020	1.176	38,44	45.192	
GSA sh.p.k.	23.03.2020-31.03.2020	12.240	40,15	491.920	
<b>Total MARS 2020</b>					
EFF AG	01.04.2020-12.04.2020	14.400	32,95	474.480	
EFF AG	01.04.2020-12.04.2020	20.160	40,00	806.400	
PEP	01.04.2020-12.04.2020	2.880	39,99	115.176	
DEVOLL HYDROPOWER SH.A	01.04.2020-12.04.2020	2.256	37,39	84.573	
Future Energy Trading&Exchange Dynamics	01.04.2020-12.04.2020	504	40,00	20.160	
ENER TRADE SH.P.K.	01.04.2020-12.04.2020	2.544	37,50	95.400	
GSA sh.p.k.	01.04.2020-12.04.2020	22.848	39,98	913.464	
PEP	13.04.2020-22.04.2020	1.800	31,89	57.402	
DEVOLL HYDROPOWER SH.A	13.04.2020-22.04.2020	1.200	32,99	39.588	
RENGRY TRADING GROUP	13.04.2020-22.04.2020	6.480	32,92	213.552	
Future Energy Trading&Exchange Dynamics	13.04.2020-22.04.2020	1.200	32,11	38.532	
ENER TRADE SH.P.K.	13.04.2020-22.04.2020	160	34,99	5.598	
GSA sh.p.k.	13.04.2020-22.04.2020	2.520	32,75	82.530	
ENER TRADE SH.P.K.	13.04.2020-22.04.2020	9.440	34,99	330.304	
GSA sh.p.k.	13.04.2020-22.04.2020	11.120	34,99	389.008	
NVA	13.04.2020-22.04.2020	160	35,00	5.600	
EFF AG	13.04.2020-22.04.2020	20.000	35,00	700.000	
EFF AG	23.04.2020-30.04.2020	14.000	31,77	444.780	
RENGRY TRADING GROUP	23.04.2020-30.04.2020	1.920	31,77	60.984	
GSA sh.p.k.	23.04.2020-30.04.2020	7.840	31,89	250.011	
<b>Total PRILL 2020</b>					
ENER TRADE SH.P.K.	01.05.2020-10.05.2020	7.800	30,89	241.671	
Gen Energy sh.p.k.	01.05.2020-10.05.2020	4.200	30,97	130.074	
RENGRY TRADING GROUP	01.05.2020-10.05.2020	10.000	31,11	311.100	
EFF AG	01.05.2020-10.05.2020	18.000	31,22	561.960	
NVA	01.05.2020-10.05.2020	6.000	31,80	190.800	
Future Energy Trading&Exchange Dynamics	01.05.2020-10.05.2020	2.250	31,89	71.753	
DEVOLL HYDROPOWER SH.A	11.05.2020-17.05.2020	1.190	31,93	37.997	
EFF AG	11.05.2020-17.05.2020	12.800	32,16	411.648	
GSA sh.p.k.	11.05.2020-17.05.2020	8.925	31,70	282.921	
DEVOLL HYDROPOWER SH.A	18.05.2020-24.05.2020	3.360	32,17	108.072	
ENER TRADE SH.P.K.	18.05.2020-24.05.2020	108	32,35	3.492	
PEP	18.05.2020-24.05.2020	3.360	32,75	110.040	
GSA sh.p.k.	18.05.2020-24.05.2020	2.700	32,90	88.830	
EFF AG	18.05.2020-24.05.2020	2.352	34,64	81.472	
DEVOLL HYDROPOWER SH.A	18.05.2020-24.05.2020	1.680	35,36	59.408	
PEP	18.05.2020-24.05.2020	112	36,18	4.056	
EFF AG	18.05.2020-24.05.2020	11.200	36,63	410.256	
ENER TRADE SH.P.K.	18.05.2020-24.05.2020	2.400	36,68	88.032	
GSA sh.p.k.	18.05.2020-24.05.2020	2.880	36,75	105.840	
Future Energy Trading&Exchange Dynamics	18.05.2020-24.05.2020	112	36,88	4.111	
NOVA COMMORTIES	18.05.2020-24.05.2020	560	36,84	20.496	
RENGRY TRADING GROUP	18.05.2020-24.05.2020	2.464	36,99	91.114	
NVA	18.05.2020-24.05.2020	560	37,00	20.720	
GSA sh.p.k.	18.05.2020-24.05.2020	2.016	37,00	74.592	
EFF AG	25.05.2020-31.05.2020	10.080	33,45	337.176	
DEVOLL HYDROPOWER SH.A	25.05.2020-31.05.2020	1.360	33,83	45.908	
EFF AG	25.05.2020-31.05.2020	10.528	36,88	388.171	
GSA sh.p.k.	25.05.2020-31.05.2020	560	37,00	20.720	
PEP	25.05.2020-31.05.2020	2.240	36,58	81.936	
Future Energy Trading&Exchange Dynamics	25.05.2020-31.05.2020	1.920	36,99	70.920	
ENER TRADE SH.P.K.	25.05.2020-31.05.2020	1.120	37,00	41.440	
AVEN ENERGY TRADING	25.05.2020-31.05.2020	2.240	37,00	82.880	
RENGRY TRADING GROUP	25.05.2020-31.05.2020	1.520	37,77	57.411	
NVA	25.05.2020-31.05.2020	1.680	38,00	63.840	
<b>Total MAJ 2020</b>					
EFF AG	01.06.2020-10.06.2020	23.040	31,15	717.696	
DEVOLL HYDROPOWER SH.A	01.06.2020-10.06.2020	7.700	31,66	245.610	
RENGRY TRADING GROUP	01.06.2020-10.06.2020	5.760	31,48	181.224	
EFF AG	11.06.2020-18.06.2020	43.500	35,00	1.522.500	
EFF AG	25.06.2020-30.06.2020	2.400	34,92	83.808	
<b>Total QERSHOR 2020</b>					
EFF AG	01.07.2020-31.07.2020	74.000	40,83	3.021.200	
<b>Total KORRIK 2020</b>					
EFF AG	01.08.2020-11.08.2020	19.144	46,83	896.827	
Devoll Hydropower sh.a	01.08.2020-11.08.2020	12.648	41,91	529.627	
GSA Shpk	01.08.2020-11.08.2020	29.760	44,60	1.327.200	
NVA Shpk	01.08.2020-11.08.2020	22.120	46,30	1.024.410	
Gen Energy Trading Group shpk	01.08.2020-11.08.2020	9.672	46,70	452.523	
Gen Energy Trading Group shpk	01.08.2020-11.08.2020	14.830	41,80	620.278	
Future Energy Trading and Exchange Dynamics Shk	01.08.2020-11.08.2020	2.476	41,80	103.496	
GSA Shpk	01.08.2020-11.08.2020	23.120	41,99	971.211	
Enec Trade Shpk	01.08.2020-11.08.2020	13.720	42,00	576.240	
<b>Total GUSHT 2020</b>					
Bjerrjet FTL 8 - majori 2020			1.274.300,00	47,17	60.111.389

