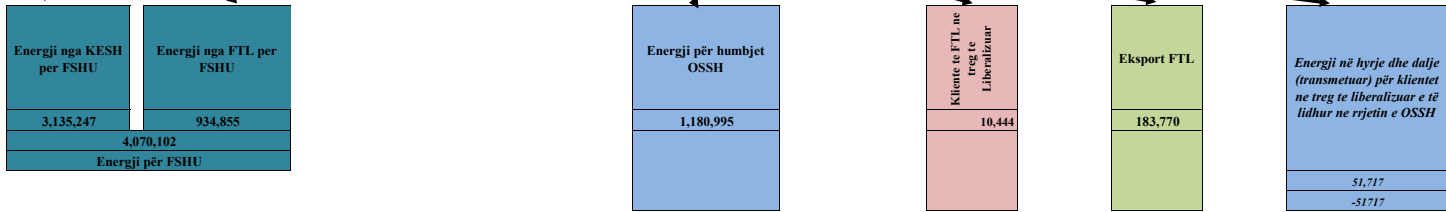


BILANCI ENERJITIK 9-MUJORI 2021 (MWh)

Prodhimi neto publik		Prodhuar nga PPE në rrjetin e OSSH			Prodhuar nga PPE në rrjetin e OST		Prodhues të pavarur				Prodhim neto vendas	
Prodhimi Neto KESH sha		Neto (Selit)	HC.Priv/Kon në Rrjetin e OSSH për FTL	FOTOVOLTAIK	HC.Priv/Kon në Rrjetin e OST për FTL	Neto Ashta	Neto Banjla	Neto Magjica	Neto KURUM	H/C Peshqesh		H/C Fangu
4,493,691		22,616	683,233	34,306	746,906	238,284	207,378	349,291	320,735	78,604	199,953	7,374,997
<small>Balanca e shëmbëtyrës në Interkoneksion Balanca e shëmbëtyrës të brendshme OST/OSSH Shitje OST për tregun e konsumit vetjak Konsumuar nga Treg i Libër Devizime nga Programi i Interkoneksionit Energji për shërbime ndihmësi/dribalancë</small>	1,358,444											
Energji për FSHU nga KESH sha		3,135,247										

Energji e siguruar nga FTL							nga ost Tec Ballsh	nga ost për klientet në treg të liber.
Blerje Neto (Selit)	Blerje HC.Priv/Kon në Rrjetin e OSSH për FTL	Blerje FOTOVOLTAIK	Blerje HC.Priv/Kon në Rrjetin e OST për FTL	Blerje Neto Ashta	Blerje në Treg të Liberalizuar nga FTL			
22,616	683,233	34,306	746,906	238,284	584,189	530	51,717	
2,361,781								

Balanca në interkoneksion (dhënie)
1,091,625



Energji e konsumuar në Shqipëri
6,283,382

TABELA ME TE DHENA PERIODEKE (MUJORE) TE OSHEE Sh.a 2021			Janar	Shkurt	Mars	Prill	Maj	Qershor	Korrik	Gusht	Shtator	Progresive
A	Energji Totale e Hyrë në OSHEE Sh.a (MWh)	A=A.1+A.3-A1.7	724,554	629,962	662,183	590,810	504,970	519,576	591,485	603,872	485,288	5,312,700
A.1	Energji e transmetuar nepermjet OST per llogari te OSHEE Sh.a	A.1=Sum(A.1.1,A.1.6)	599,793	531,361	562,967	489,782	469,536	480,507	565,502	586,951	469,914	4,756,313
A.1.1	Nga KESH -Gen nepermjet OST		410,055	354,097	425,947	306,064	300,752	396,549	457,254	310,593	173,935	3,135,247
A.1.2	Nga OST si import i OSHEE Sh.a		1,488	1,344	1,486	1,440	1,488	1,440	58,577	245,448	271,448	584,159
A.1.3	Energji e transmetuar per klientet .35kv (te dal ne treg te parregulluar furnizues te tjere)		4,713	4,782	5,699	5,435	5,842	6,527	6,993	6,897	4,828	51,717
A.1.4	Nga OST per llogari te klienteve te OSHEE Sh.a prodhuarnga HEC-et ne rrjetin e transmetimit		183,538	171,138	129,835	176,843	161,453	75,990	42,678	24,013	19,703	985,190
A.1.5	Nga TEC VLORA nepermjet OST		n/a	n/a	n/a	n/a	n/a	n/a	n/a	n/a	n/a	n/a
A.1.6	Nga Bistrica 1,2 nepermjet OST		n/a	n/a	n/a	n/a	n/a	n/a	n/a	n/a	n/a	n/a
A.1.7	Export OSHEE Group Sh.a			30,980	11,050	40,190	84,480	17,070	-	-	-	183,770
A.2	Energji elektrike e injektuar ne OST nga Hec-et Lokale	A.2	61,299	66,197	46,597	74,064	61,795	14,939	1,909	665	937	328,403
A.3	Energji e transmetuar direkt ne rrjetin e OSHEE Sh.a	A.3 = Sum(A.3.1, A.3.3)	124,761	129,581	110,266	141,218	119,914	56,139	25,982	16,921	15,374	740,157
A.3.1	HEC Ulez, Lanabregas		3,249	2,958	2,527	2,683	2,707	2,334	2,591	2,154	1,413	22,616
A.3.2	Imjantet Private/me Koncesion		119,778	124,135	103,961	134,826	112,533	49,068	18,548	10,179	10,207	683,235
A.3.3	Burimet e Rinoveshme Fotovoltaik (BRE)		1,734	2,488	3,779	3,708	4,674	4,737	4,844	4,588	3,754	34,306
B	Energji Totale ne Rrjetin e Shperndarjes (MWh)	B=A+ A.1.3+A.2	785,853	696,159	708,781	664,873	566,764	534,516	593,394	604,537	486,226	5,641,103
C	Humbjet Totale ne Rrjetin e Shperndarjes (MWh)	C=C.1+C.2+C.3	219,024	139,953	183,717	140,125	101,574	98,061	111,263	108,398	78,880	1,180,995
C.1	Humbje Teknikke njesite e TL (MWh)		9,713	9,094	9,360	10,648	9,398	9,847	8,130	8,658	7,091	81,940
C.2	Humbje Teknikke ne Zona (MWh)		133,183	83,159	108,467	82,462	56,007	54,131	64,751	66,257	45,205	693,623
C.3	Humbje JoTeknikke ne Zona (MWh)		76,128	47,699	65,890	47,015	36,169	34,083	38,382	33,482	26,583	405,432
C.1	Humbjet Totale ne OSHEE Sh.a (%)	C.1= C/B	27.87%	20.10%	25.92%	21.08%	17.92%	18.35%	18.75%	17.93%	16.22%	20.94%
C.1.1	Humbje Teknikke njesite e TL (%)		1.24%	1.31%	1.32%	1.60%	1.66%	1.84%	1.37%	1.43%	1.46%	1.45%
C.2.1	Humbje Teknikke ne Zona (%)		17.17%	12.11%	15.52%	12.61%	10.05%	10.32%	11.07%	11.12%	9.44%	12.48%
C.3.1	Humbje JoTeknikke ne Zona (%)		9.69%	6.85%	9.30%	7.07%	6.38%	6.38%	6.47%	5.54%	5.47%	7.19%
D	Energjia e perdorur ne Rrjetin e Shperndarjes	D=Sum(D.1-D.7)	558,828	553,799	522,603	523,383	462,433	433,833	480,055	493,402	403,343	4,431,677
D.1	Shitur Klienteve FMF (MWh)	D.1=D.1.1+D.1.2	2,350	1,572	1,555	1,424	1,631	1,896	1,850	2,283	1,749	16,309
D.1.1	Shitur Klienteve FMF Privat (MWh)		192	18	18	13	7	64	124	541	151	1,127
D.1.2	Shitur Klienteve FMF JoBuxhetore(MWh)		2,158	1,554	1,537	1,411	1,624	1,831	1,727	1,741	1,598	15,183
D.2	Shitur Klienteve Private (MWh)	D.2= D.2.1+D.2.2+D.2.3	132,045	130,668	133,656	131,218	128,633	151,025	179,886	180,009	143,292	1,310,431
D.2.1	Shitur nga rrjeti i Transmetimit per llogari te OSHEE Sh.a		-	-	-	-	-	-	-	-	-	-
D.2.2	Shitur per nevoja te veta te OSHEE Sh.a		703	606	593	542	392	374	427	501	373	4,512
D.2.3	Shitur Klienteve Private (pa ate per nevoja te veta dhe Ne TL)		131,341	130,062	133,063	130,676	128,240	150,651	179,459	179,508	142,919	1,305,919
D.3	Shitur Klienteve JoBuxhetore (MWh)		25,919	24,687	27,142	26,930	26,786	28,452	31,143	33,233	28,663	252,957
D.4	Shitur Klienteve Buxhetore (MWh)		26,459	24,961	24,144	21,244	17,185	18,372	19,620	19,685	18,691	190,361
D.5	Shitur Klienteve Familjare (MWh)	D.5=D.5.1+D.5.2	306,044	300,930	283,810	263,069	220,561	212,621	238,652	250,630	205,182	2,281,500
D.5.1	Shitur Klienteve Familjare (MWh)		299,586	294,646	277,594	256,955	214,242	206,043	231,736	243,682	198,244	2,222,728
D.5.2	Shitur Klienteve Familjare per Ambientet e Perbashketa		6,458	6,285	6,216	6,114	6,319	6,578	6,916	6,947	6,938	58,771
D.6	Energji elektrike e injektuar ne OST nga Hec-et Lokale	D.6=A.2	61,299	66,197	46,597	74,064	61,795	14,939	1,909	665	937	328,403
D.7	Energji elektrike e perdorur nga klientet ne treg te parregulluar	D.7	4,713	4,782	5,699	5,435	5,842	6,527	6,993	6,897	4,828	51,717
E	Faturuar muaji Parardhes (000/leke)		6,641,071	6,400,370	6,245,453	6,158,373	5,817,548	5,190,837	5,548,298	6,377,974	6,554,952	54,934,876
F	Arketimet e muajit aktual (000 leke)	G=F.1+F.2+F.3+F.4	5,737,532	5,691,538	6,378,961	5,604,601	5,886,818	5,746,417	5,377,882	6,001,630	5,945,864	52,371,243
F.1	Arketuar per faturat korrente te vitit aktual		4,135,705	3,770,254	4,067,618	3,860,196	3,707,556	3,268,937	3,525,299	3,847,865	3,788,897	33,972,329
F.3	Arketuar per faturat e tjera te vitit aktual		15,512	12,369	1,622,906	1,442,620	1,850,582	2,148,521	1,527,971	1,800,534	1,898,864	12,319,879
F.4	Arketuar per faturat e tjera te viteve te kaluara		1,586,315	1,908,915	688,438	301,785	328,680	328,959	324,612	353,231	258,102	6,079,035
F.1	Arketimet e muajit aktual (%)	F.1=F/E	86.4%	88.9%	102.1%	91.0%	101.2%	110.7%	96.9%	94.1%	90.7%	95.3%
F.1.1	Arketuar per faturat korrente te vitit aktual (%)	F.1.1=F.1/E	62.3%	58.9%	65.1%	62.7%	63.7%	63.0%	63.5%	60.3%	57.8%	61.8%
F.1.3	Arketuar per faturat e tjera te vitit aktual (%)	F.1.3=F.3/E	0.2%	0.2%	26.0%	23.4%	31.8%	41.4%	27.5%	28.2%	29.0%	22.4%
F.1.4	Arketuar per faturat e tjera te viteve te kaluara (%)	F.1.4=F.4/E	23.9%	29.8%	11.0%	4.9%	5.6%	6.3%	5.9%	5.5%	3.9%	11.1%
G	Faturuar muaji Raportues (000/leke)		6,400,370	6,245,453	6,158,373	5,817,548	5,190,837	5,548,298	6,377,974	6,554,952	5,401,032	53,694,836
1	Nr. Konsumatoreve gjithesej (Nr.)		1,266,069	1,266,734	1,268,062	1,270,888	1,273,899	1,275,201	1,277,741	1,285,188	1,274,559	1,274,559
2	Fatura te emetuara me lexim konsumi (Nr.)		976,680	958,732	941,330	957,668	970,818	991,655	1,006,358	1,028,187	1,024,058	8,855,486
3	Sasia e energjise se faturuar me lexim konsumi (MWh)		-	-	-	-	-	-	-	-	-	-
4	Fatura te emetuara me lexim "0" (Nr.)		289,389	282,144	326,732	313,220	303,081	283,546	271,383	257,001	262,152	2,588,648
5	Nr.Faturave te emetuara pa lexim (energji e pa matur) (Nr.)		-	-	-	-	-	-	-	-	-	-
6	Sasia e energjise se faturuar si energji e pamatur (MWh)		-	-	-	-	-	-	-	-	-	-
7	Nr.Faturave te emetuara pa lexim (dem ekonomik) (Nr.)		794	303	102	197	355	342	244	360	238	2,935
8	Sasia e faturuar si dem ekonomik (MWh)		7,189	1,563	1,619	391	1,657	1,773	1,019	1,708	1,075	17,994
9	Nr.Faturave per te cilat eshte arketuar kamat vonese (Nr.)		12,717	320,816	391,076	323,599	404,245	416,309	458,982	526,159	392,009	3,245,912
10	Vlera e Kamat vonesave te arketuara (000/leke)		1,343	48,333	84,054	54,180	78,083	76,947	100,067	98,694	75,675	617,377

Shenime:

- Do te plotesohet kur te kete informacion nga OST dhe KESH
- Faturat korrente perfshijne faturat me date pagese brenda dates se fundit te muajit pasardhes pas muajit kur leshohet fatura
- Faturat me vonese perfshijne faturat me date pagese pertej dates se fundit te muajit pasardhes pas muajit kur leshohet fatura
- Perfaqeson numrin total te kontratave aktive
- Nese ne te njeten fature ka edhe konsum te lexuar edhe energji te pa matur, fatura eshte raportuar dy here ne te dyja kategorite
- Nese ne te njeten fature ka edhe konsum te lexuar edhe dem ekonomik, fatura eshte raportuar dy here ne te dyja kategorite
- Demi Ekonomik (aplikimi vendimit te ERE 232/2019). Nuk perfshihet ne strukturen e FSHU.

BILANCI ENERJITIK I FTL sha, FSHU SHA DHE OSSH sha PER 8-MUJORIN 2021 (MWh)			
1	ENERGJI TOTALE E HYRE NE RRJETIN E OSSH-se	2+3+7.6	5,497,128
2	Energji e shitur nga KESH sha per FSHU sha		3,135,347
3	ENERGJI NE HYRJE E BLERE NGA FTL (OSHEE sha)	3.1+3.2+3.3+3.4	2,310,064
3.1	Blere nga Prodhimi i PPE në rrjetin e OSSH		740,155
3.2	Blere nga Prodhimi i PPE në rrjetin e OST		985,190
3.3	Blere ne Treg të Liberalizuar nga FTL sha		584,189
3.4	Transmetim nga Tec Ballshi		530
4	ENERGJI NE DALJE E SHITUR NGA FTL (OSHEE sha)	4.1+4.2+4.3+4.4+4.5	2,310,064
4.1	Energji nga FTL per FSHU		934,855
4.2	Energji nga FTL për humbjet OSSH		1,180,995
4.4	Energji e shitur nga FTL ne treg te liberalizuar		10,444
4.5	Eksport i FTL		183,770
5	ENERGJI NE HYRJE PER FSHU (OSHEE sha)	2+4.1	4,070,102 19
5.1	Energji Faktike nga KESH sha per FSHU sha	2	3,135,247
5.2	Energji nga FTL per FSHU	4.1	934,855
6	ENERGJI NE DALJE PER FSHU (OSHEE sha)	6.1 deri 6.14	4,070,083
6.1	Shitur Klienteve te Sherbimit Universal		4,035,249
6.11	Shitur klienteve Familiare		2,281,500
6.12	Shitur klienteve Private		1,310,431
6.13	Shitur klienteve Buxhetore		190,361
6.14	Shitur klienteve JoBuxhetore		252,957
6.2	Shitur Klienteve të mundesisë së Fundit		16,310
6.21	Shitur Klienteve FMF Privat (MWh)		1,127
6.22	Shitur Klienteve FMF JoBuxhetore(MWh)		15,183
	Shitur si dem Ekonomik		17,994
6.23	Shitur energjia e marre nga Tec Ballshi		530
7	ENERGJI QE KALON NE RRJETIN E OSSH-se	4.2+2+4.1+7.4+7.5+7.6	5,484,035
7.1	Energji nga FTL për humbjet OSSH		1,180,995
7.2	Energji Faktike nga KESH sha per FSHU sha		2,961,312
7.3	Energji nga FTL per FSHU		934,855
7.4	Energji e ngitur ne rrjetin e transmetimit nga centralet e lidhura ne rrjetin e OSSH		328,403
7.5	Energji e furnizuar nga FTL për Kliente ne treg të liberalizuar (ne rrjetin e OSSH)		16,309
7.6	Energji vetem per tu transmetuar tek klientet ne treg te liberalizuar (ne rrjetin e OSSH)		51,717
7.7	Klienteve të FTL ne treg te liberalizuar		10,444
8	Humbje totale ne rrjetin e OSSH-se (%)	7.1 x 100 / 7	21.5

Bilanci i Energjisë Elektrike për vitin 2021

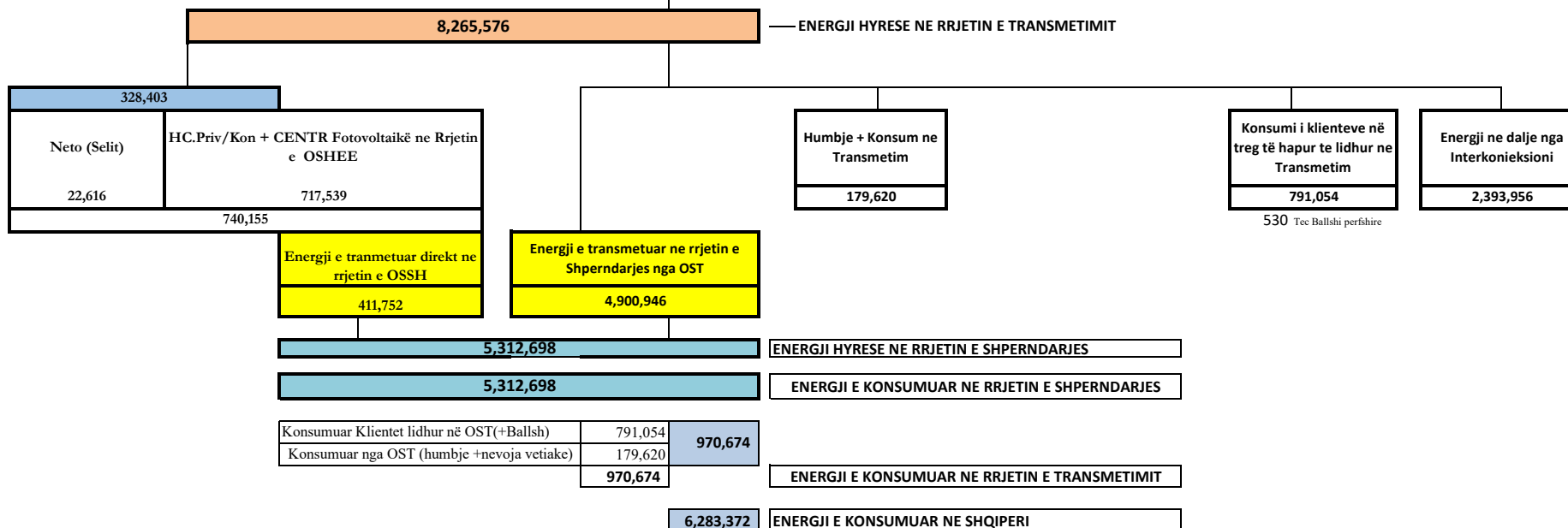
OST sha	Njësia e Matjes	Janar	Shkurt	Mars	Prill	Maj	Qershor	Korrik	Gusht	Shtator	Shuma 2021 [MWh]
	MWh										
Prodhimi nga KESH GEN në Rrjetin e Transmetimit	1	648,222	651,567	590,022	521,278	553,158	482,334	492,645	355,192	199,273	4,493,691
Prodhimi nga HEC/HPP e vogla në Rrjetin e Transmetimit	2	61,299	66,197	46,597	74,064	61,795	14,939	1,909	665	937	328,403
Prodhimi nga PPE/IPP e mëdha në Rrjetin e Transmetimit	3	147,262	137,659	98,116	147,878	130,049	51,266	18,998	7,102	8,576	746,906
Prodhimi nga HEC Peshqesh	4	18,063	16,059	12,828	15,694	9,806	3,185	1,803	945	222	78,604
Prodhimi nga HEC Banja	5	37,952	43,734	31,179	27,835	23,432	11,455	14,200	10,858	6,732	207,378
Prodhimi nga HEC FANG	6	49,111	39,787	28,899	25,490	17,871	13,227	8,029	6,490	11,050	199,953
Prodhimi nga HEC Moglicë	7	35,215	77,681	60,372	41,383	49,480	13,893	28,487	21,703	21,076	349,291
Prodhimi nga HEC Ashta	8	36,275	33,478	31,720	28,965	31,404	24,725	23,679	16,911	11,127	238,284
Prodhimi nga KURUM (Ulez-Shkopet&Bistrica1,2)	9	53,818	51,870	48,597	49,167	44,666	24,747	21,514	13,833	12,524	320,735
Eksporti (-) nga Linjat e Interkonjeksionit	D	367,668	479,008	299,881	334,456	390,409	199,095	155,784	83,482	84,173	2,393,956
Importi (+) nga Linjat e Interkonjeksionit	R	42,302	14,791	42,120	45,298	38,587	144,354	225,260	357,410	392,209	1,302,331
Balanca (Total Interkonjeksioni)	10=(R-D)	325,365	464,216	257,761	289,159	351,821	54,741	-69,475	-273,928	-308,036	1,091,625
Energjia Totale në Marrje	11=(1+2+3+4+5+6+7+8+9+R)	1,129,520	1,132,825	990,450	977,050	960,248	784,124	836,524	791,109	663,727	8,265,576
Humbjet në Rrjetin e Transmetimit (përfshirë Nevojat Vetjake)	12	26,474	27,612	19,971	22,832	22,959	14,902	16,499	16,965	11,405	179,620
Humbjet në Rrjetin e Transmetimit %	13=12/11	2.34	2.44	2.02	2.34	2.39	1.90	1.97231389	2.14	1.72	2.17
Energjia Totale në Dhënie	14=(11-12)	1,103,046	1,105,213	970,478	954,218	937,288	769,222	820,025	774,144	652,322	8,085,956
<i>Transmetuar në Linjat e Interkonjeksionit</i>	15=D	367,668	479,008	299,881	334,456	390,409	199,095	155,784	83,482	84,173	2,393,956
<i>Transmetuar tek Klientët e Kualifikuar</i>		74,214	59,565	72,016	96,044	99,973	91,699	96,777	102,993	97,244	790,524
<i>EL220-L220KURUM/337</i>		31,422	24,419	13,837	33,251	35,512	33,794	33,860	31,829	30,991	268,914
<i>F.Arrez-T3/653</i>		1,166	957	1,432	881	1,158	711	1,148	1,337	652	9,442
<i>Titan T1,T2</i>		8,210	4,226	11,668	11,488	11,470	9,223	7,117	10,749	8,838	82,990
<i>FUSHE KRUJE 220kV-T2/058</i>		8,497	2,516	10,007	12,804	13,635	11,522	12,046	12,141	10,588	93,756
<i>N/ST 220/6,3Colacent-T1/336</i>		539	902	1,312	1,472	1,402	1,344	1,513	1,554	1,599	11,637
<i>N/ST i GSA EL 110kV-T1/694</i>		9,128	8,183	9,056	8,709	9,029	7,922	5,496	-	-	57,522
<i>N/ST i GSA EL 110kV-T2/960</i>		-	-	-	-	-	-	6,576	16,424	16,713	39,713
<i>N/ST i AES EL 110kV-T1/690</i>		7,374	6,447	7,060	7,050	7,370	6,874	7,426	7,415	7,114	64,131
<i>N/ST I AES EL 110kV-T2/692</i>		79	4,883	7,347	7,391	7,604	7,287	7,825	7,689	7,484	57,590
<i>HEC Moglice T1,T2,T3</i>		5	14	1	4	0.38	22	14	0	24	85
<i>HEC Peshqesh-T1/633</i>		3	2	4	0.38	4	29	38	34	33	148
<i>Lajthiza T1/742</i>		367	368	406	408	444	459	515	575	512	4,054
<i>HEC Ashta1-T1,HEC Ashta2-T1,</i>		-	-	-	0.15	-	-	-	0.01	0	0
<i>HEC Banje T1,T2</i>		6	2	11	13	16	25	20	24	21	138
<i>HEC Fang-T1,T2,</i>		1	8	25	25	34	26	32	19	13	184
<i>Gjenerim KURUM</i>		3	1	1	0.42	-	14	28	34	31	113
<i>TEC Ballsh-T1/598</i>		73	62	68	62	56	51	52	53	54	530
<i>FERRO KROM-F1,F2,F3,F4</i>		7,413	6,638	9,847	12,549	12,295	12,447	13,122	13,168	12,629	100,110
<i>Transmetuar në rrjetin e Shpërndarjes</i>		661,092	566,578	598,514	523,656	446,851	478,376	567,411	587,616	470,852	4,900,946
<i>Transmetuar në rrjetin e Shpërndarjes 110 kV</i>		562,636	486,256	520,646	458,142	389,382	415,733	495,814	519,039	411,856	4,259,503
<i>Transmetuar në rrjetin e Shpërndarjes 35 kV</i>		50,014	38,067	38,702	33,459	27,996	31,426	37,908	38,387	32,825	328,784
<i>Transmetuar në rrjetin e Shpërndarjes 6, 10, 20 kV</i>		48,443	42,256	39,167	32,054	29,473	31,217	33,689	30,191	26,170	312,660

TË DHËNA MBI TRANSMETIMIN E ENERGJISË ELEKTRIKE NGA OPERATORI I SISTEMIT TE TRANSMETIMIT NË SHQIPËRI PËR 9-Mujorin e VITIT 2021 (MWh)

	Janar	Shkurt	Mars	Prill	Maj	Qershor	Korrik	Gusht	Shtator	2021		
HYRJE	Dhene nga H/C e KESH ne rrjetin e Transmetimit	648,222	651,567	590,022	521,278	553,158	482,334	492,645	355,192	199,273	4,493,691	8,265,577
	Dhene nga H/C e me perparesi ne rrjetin e Transmetimit	147,262	137,659	98,116	147,878	130,049	51,266	18,998	7,102	8,576	746,906	
	Energji nga Hec-et Lokale levruar ne Rrjetin e Transmetimit (me ngritje)	61,299	66,197	46,597	74,064	61,795	14,939	1,909	665	937	328,402	
	Gjenerim KURUM (prodhues i pavarur)	53,818	51,870	48,597	49,167	44,666	24,747	21,514	13,833	12,524	320,736	
	HEC ASHTA (prodhues i pavarur Kontr.me OSHEE)	36,275	33,478	31,720	28,965	31,404	24,725	23,679	16,911	11,127	238,284	
	HEC BANJE (prodhues i pavarur)	37,952	43,734	31,179	27,835	23,432	11,455	14,200	10,858	6,732	207,377	
	HEC MOGLICE (prodhues i pavarur)	35,215	77,681	60,372	41,383	49,480	13,893	28,487	21,703	21,076	349,290	
	HEC PESHQESH-T1/637 (prodhues i pavarur)	18,063	16,059	12,828	15,694	9,806	3,185	1,803	945	222	78,604	
	HEC FANGU (prodhues i pavarur)	49,111	39,787	28,899	25,490	17,871	13,227	8,029	6,490	11,050	199,953	
	Importi(Hyre) nga Linjat e Interkonjeksionit	42,302	14,791	42,120	45,298	38,587	144,354	225,260	357,410	392,211	1,302,333	
DALJE	Humbjet ne Transmetim	26,474	27,612	19,971	22,832	22,959	14,902	16,499	16,965	11,405	179,620	8,265,577
	Transmetuar ne Rrjetin e Shperndarjes	661,092	566,578	598,514	523,656	446,851	478,376	567,411	587,616	470,852	4,900,947	
	Klientene treg te hapur (TL) (+Tec Ballsh)	74,286	59,627	72,083	96,106	100,029	91,750	96,829	103,046	97,298	791,055	
	Eksporti (Dale) nga Linjat e Interkonjeksionit	367,668	479,008	299,881	334,456	390,409	199,095	155,784	83,482	84,173	2,393,956	
Humbjet ne Transmetim	26,474	27,612	19,971	22,832	22,959	14,902	16,499	16,965	11,405	179,620		
Humbjet ne Transmetim ne %	2.34	2.44	2.02	2.34	2.39	1.90	1.97	2.14	1.72	2.17		

PARAQITJA SKEMATIKE E FLUKSEVE TE ENERGIJSE NE SISTEMIN ELEKTRO-ENERGJITIK SHQIPETAR 9-mujori VITI 2021 (MWh)

Energji e lëvruar nga H/C-et e KESH sha	Energji e lëvruar nga prodhuesit me përparësi lidhur ne TL (kontrate me OSHEE)	Energji e lëvruar nga H/C ASHTA lidhur ne TL (kontrate me OSHEE)	Energji e lëvruar nga H/C et Priv/konc lidhur ne TL (Prodhues ne treg te hapur)					Energji ne hyrje nga Interkonieksioni
4,493,691	746,906	238,284	Kurum	Banje	Moglice	Fangu	Peshqesh	1,302,331
			320,735	207,378	349,291	199,953	78,604	



LEGJENDA	
FSHU	FURNIZUES I SHËRBIMIT UNIVERSAL
FMF	FURNIZUES I MUNDËSISË SË FUNDIT

Burimi OST ,OSHEE sha

PRODHIMI NETO NE SHQIPERI	Janar	Shkurt	Mars	Prill	Maj	Qershor	Korrik	Gusht	Shtator	9-M 2021
Prodhimi Neto KESH sha.	648,222	651,567	590,022	521,278	553,158	482,334	492,645	355,192	199,273	4,493,691
Hec-et Private dhe Konc. (Rrjeti Shperndarjes)	119,778	124,135	103,961	134,826	112,533	49,065	18,549	10,179	10,206	683,233
Hec-et Private dhe Konc. (Rrjeti Transmetimit)	147,262	137,659	98,116	147,878	130,049	51,266	18,998	7,102	8,576	746,906
HEC Ashta	36,275	33,478	31,720	28,965	31,404	24,725	23,679	16,911	11,127	238,284
Prodhimi Neto Hec Lanabregas	3,249	2,958	2,527	2,683	2,707	2,334	2,591	2,154	1,413	22,616
Prodhimi Neto (Hec Ulez,Shkopet,Bistrica 1,2)	53,818	51,870	48,597	49,167	44,666	24,747	21,514	13,833	12,524	320,736
Prodhimi Hec Peshqesh	18,063	16,059	12,828	15,694	9,806	3,185	1,803	945	222	78,604
Prodhimi Hec Fangu	49,111	39,787	28,899	25,490	17,871	13,227	8,029	6,490	11,050	199,953
Prodhimi Hec Banja	37,952	43,734	31,179	27,835	23,432	11,455	14,200	10,858	6,732	207,377
Prodhimi Hec Moglica	35,215	77,681	60,372	41,383	49,480	13,893	28,487	21,703	21,076	349,290
Prodhimi i Centraleve Fotovoltaike	1,734	2,488	3,779	3,708	4,674	4,737	4,844	4,588	3,754	34,306
ENERGJIA NETO E PRODHUAR NE SHQIPERI	1,150,680	1,181,417	1,011,999	998,906	979,779	680,967	635,339	449,955	285,953	7,374,997

ENERGJI NGA INTERKONEKSIONI	Janar	Shkurt	Mars	Prill	Maj	Qershor				9-M 2021
Energji ne dhenie nga Interkoneksioni	367,668	479,008	299,881	334,456	390,409	199,095	155,784	83,482	84,173	2,393,956
Energji ne marrje nga Interkoneksioni	42,302	14,791	42,120	45,298	38,587	144,354	225,260	357,410	392,209	1,302,331
Ballanca Hyrje/Dalje nga Interkoneksioni	325,365	464,216	257,761	289,159	351,821	54,741	-69,475	-273,928	-308,036	1,091,625

KONSUMI I ENERGJISE NE SHQIPERI		9-M 2021
Konsumi i klientëve Tarifore		4,035,249
Konsumi i klientëve të furnizuar si FMF		16,309
Shitur klienteve si dem ekonomik		17,994
Konsumi i Klientëve që përdorin rrjetin për energjine e blerë ne treg të liberalizuar		51,717
Energji për Klientet ne treg të liberalizuar lidhur në OSSH me furnizues FTL		10,444
Konsumi për mbulimin e humbjeve		1,180,995
Konsumuar nga klientet e lidhur në Tec Ballsh		530
Konsumuar nga Klientet e lidhur në OST		790,524
Konsumuar nga OST (humbje +nevoja vetiake)		179,620
KONSUMI TOTAL 2021 (9-mujori)		6,283,382

PRODHIMI GJATE VITIT 2021 NGA CENTRALET E LIDHURA NE RRJETIN E TRANSMETIMIT (MWh)													
HECET DHE KAPACITETI	MW	SUBJEKTI	LIDHJA	JANAR	SHKURT	MARS	PRILL	MAJ	Qershor	Korrik	Gusht	Shtator	9-M 2021
Hec "Fierze" me fuqi 500 MW	500.000	"KESH" sha	220 kV	648,222	651,567	590,022	521,278	553,158	482,334	492,645	355,192	199,273	4,493,691
Hec "Koman" me fuqi 600 MW	600.000	"KESH" sha	220 kV										
Hec "V. Dejes" me fuqi 250 MW	250.000	"KESH" sha	220 kV										
Hec "Vlora" me fuqi 98 MW	98.000	"KESH" sha	220 kV										
													4,493,691
Hec "Ulez" me fuqi 25.2 MW	25.200	"Kurum International" sh.a.	110 kV										
Hec "Shkopet" me fuqi 24 MW	24.000		110 kV	53,818	51,870	48,597	49,167	44,666	24,747	21,514	13,833	12,524	320,736
Hec "Bistrica 1" me fuqi 22.5 MW	22.500	"Ayen As Energji" sha	110 kV										
Hec "Bistrica 2" me fuqi 5 Mw	5.000		110 kV										
Hec "Peshqesh" me fuqi 27.94 MW	27.940	"Devoll Hydropower" sha	220 kV	18,063	16,059	12,828	15,694	9,806	3,185	1,803	945	222	78,604
Hec "Fangu" me fuqi 74.6 MW	74.600		110 kV	49,111	39,787	28,899	25,490	17,871	13,227	8,029	6,490	11,050	199,953
Hec "Banice" me fuqi 73 MW	73.000	"Devoll Hydropower" sha	110 kV	37,952	43,734	31,179	27,835	23,432	11,455	14,200	10,858	6,732	207,377
Hec "Mogliche" me fuqi 184 MW	184.000		111 kV	35,215	77,681	60,372	41,383	49,480	13,893	28,487	21,703	21,076	349,290
													1,155,960
Hec "Ashta" me fuqi 48.2 MW	48.200	"Eneraji Ashta" shpk	110 kV	36,275	33,478	31,720	28,965	31,404	24,725	23,679	16,911	11,127	238,284
													238,284
Hec "Bishnica 2" me fuqi 2.5 MW	2.500	"HEC Bishnica 1.2" shpk	110 kV	1,694	1,852	1,070	1,793	1,558	622	297	182	199	9,266
Hec "Dardhe" me fuqi 5.8 MW	5.800	"Wenerg" shpk	110 kV	3,494	2,997	1,553	2,768	2,321	228	-12	-12	-4	13,332
Hec "Truani" me fuqi 2.5 MW	2.500	"TRUP" shpk	110 kV	3,494	2,997	1,553	2,768	2,321	228	-12	-12	-4	13,332
Hec "Ternove" me fuqi 8.385 Mw	8.385	"TEODORI 2003" shpk	110 kV	838	842	591	1,146	4,230	1,323	1,003	751	499	11,222
Hec "Gjoric" me fuqi 4.18 MW (+/- ne prodhim)	29.610	"DITEKO" shpk	110 kV	19,328	16,808	15,456	17,931	14,608	4,991	3,356	3,082	3,038	98,599
Hec "Slabinje" me fuqi 13.8 MW	13.800	"Power Elektrik Slabinje" shpk	110 kV	11,206	11,099	6,783	11,129	11,189	3,957	1,643	620	507	58,134
Hec "Bele 1" me fuqi 5 MW	5.000	"Euron Energy" shpk	110 kV										
Hec "Topoian 2" me fuqi 5.8 MW	5.800		110 kV										
Hec "Bele 2" me fuqi 11 MW	11.000	"Alb-Energy" shpk	110 kV	15,653	17,624	15,157	19,365	19,666	12,623	4,710	144	945	105,888
Hec "Topoian 1" me fuqi 2.9 MW	2.900		110 kV										
Hec "Orgjost 1 Ri" me fuqi 4.8 MW	4.800	"Enerjal" shpk	110 kV										
Hec "Cerunje-1" me fuqi 2.3 MW	2.300		110 kV										
Hec "Cerunje-2" me fuqi 2.8 MW	2.800	"Energy partners Al" shpk	110 kV	2,860	2,275	1,480	3,434	5,425	1,370	69	-11	19	16,922
Hec "Rrupe" me fuqi 3.6 MW	3.600		110 kV										
Hec "Rapuni 1.2" me fuqi 4 dhe 4.1 MW	8.100	"C & S Construction Energy" shpk	110 kV	4,628	4,828	3,958	5,138	5,506	2,695	648	-12	-9	27,380
Hec "Rapuni 3.4" me fuqi 8.857 MW	8.850		110 kV	5,204	5,551	4,422	5,085	3,572	1,604	660	290	294	26,682
Hec "Llanai" me fuqi 13.62 MW	13.620	"Gjo.Spa.POWER" shpk	110 kV	6,807	6,587	4,428	8,264	9,676	4,553	1,510	513	332	42,670
Hec "Lengarice" me fuqi 8.94 MW	8.940	"Lengarica & Energj" shpk	110 kV	6,752	6,031	4,481	3,347	1,533	638	241	24	-14	23,033
Hec "Lura 1" me fuqi 6.54 MW	6.540	"Erdart Lura" shpk	110 kV										
Hec "Lura 2" me fuqi 4.02 MW	4.020		110 kV	8,580	7,474	4,728	8,481	7,731	1,476	373	81	228	39,151
Hec "Lura 3" me fuqi 5.66 MW	5.660	"Gjore Rec" shpk	110 kV	3,258	2,757	1,773	2,942	2,166	571	262	22	67	13,818
Hec "Malla" me fuqi 5.455 MW	5.455		110 kV	3,258	2,757	1,773	2,942	2,166	571	262	22	67	13,818
Hec "Prela" me fuqi 14.97 MW	14.970	"Prelle Energji" shpk	110 kV	7,966	6,119	3,750	7,718	6,149	1,693	130	1	156	33,681
Hec "Cemerica 1"	0.88	"REJ ENERGY" shpk	110 kV										
Hec "Cemerica 2"	1.08		110 kV	2,915	2,444	1,609	2,915	1,554	401				11,944
Hec "Cemerica 3"	2.1	"MC Inerte Lumzi"	110 kV										
Hec "TUC"	4.47		110 kV	8,403	6,039	3,255	4,306	2,022	182	819	214	604	25,846
Hec "Lumzi"	11	"Denas Power" shpk	110 kV										
Hec "Denas"	14.5		110 kV	8,003	6,821	4,086	7,281	3,571	1,101	447	212	154	31,676
Llenga 1	1.73	"HEC LLNGE" sh.p.k	110 kV										
Llenga 2	0.3		110 kV	1,111	1,037	561	1,547	1,688	678	170	-3	-7	6,781
Llenga 3	1.5	"Liria Energji shpk"	110 kV										
Hec "Shpella Poshte 2"	2.3		110 kV	1,651	1,693	998	2,157	1,812	529	204	124	112	9,279
Hec "Germani 1"	4.8	"GA-GA-MAT shpk"	110 kV										
Hec "Germani 2"	1.5		110 kV	2,884	2,250	1,389	2,260	969	86	-1	-2	-2	9,833
Hec "Lashkiza 1"	4.076	"HEC Lashkiza shpk"	110 kV										
Hec "Lashkiza 2"	0.882		110 kV	1,316	1,171	873	1,154	713	128	3	-7	-6	5,346
Hec "Seta 1+2"	7.454	"Hydro Seta" sh.p.k	110 kV										
Hec "Seta 3"	2.722		110 kV	6,330	6,254	3,717	6,844	8,513	2,183	182	-26	26	34,023
Hec "Seta 4"	4.724	"Henz Energy shpk"	110 kV										
Hec "Darsi 1,2,3"	12.7		110 kV	7,388	5,862	3,811	5,442	1,863	194	46	109	16	24,730
Hec "Egnatia"	5.1	"REMI shpk"	110 kV	2,515	2,221	1,054	2,100	2,702	768	365	200	40	11,965
Hec "Seka & Zais/684"	14.96	"SEKA Hydropower shpk"	110 kV	4,998	6,659	5,566	9,784	5,929	3,662	1,162	361	669	38,789
Hec "ARSTI"	3.13	"HEC Arsti shpk"	110 kV	1,483	2,362	1,573	2,204	1,070	198	16	11	208	9,126
Hec "KASKADA GJADER T1/344"	24.9	"S.P.E. Gjadër shpk"	110 kV	-	-	-	1,558	1,343	(23)	-22	-21	311	2,946
Hec "et Dragobia&Ceremi/686"	21.9	"Dragobia Energj shpk"	110 kV	-	-	(6)	(116)	971	2,834	598	258	203	4,342
													2,251
													147,262
													137,659
													98,116
													147,873
													130,049
													51,266
													18,998
													7,102
													8,574
													746,904

PRODHIMI GJATE VITIT 2021 NGA CENTRALET E LIDHURA NE RRJETIN E SHPERNDARJES (MWh)													
HECET DHE KAPACITETI	MW	SUBJEKTI	LIDHJA	JANAR	SHKURT	MARS	PRILL	MAJ	Qershor	Korrik	Gusht	Shtator	9-M 2021
Hec "Lanabregas" me fuqi 5 MW	5.000	"Hec Lanabregas" sha	35	3,249	2,988	2,527	2,683	2,707	2,334	2,591	2,154	1,413	22,616
Hec "Lenie" me fuqi 400 kW	0.400	"EMIKEL 2003" sh.p.k	10kV	250	242	275	257	261	241	165	73	56	1,820
Hec "Corovode" me fuqi 200 kW	0.200		10kV	67	96	103	103	107	47	-	-	-	-
Hec "Smokthine" me fuqi 9.2 MW	9.200	"Albania Green Energy" sh.p.k	35 kV	5,065	4,854	4,818	3,480	2,988	2,260	1,788	1,344	933	27,508
Hec "Bulqize" me fuqi 0.6 MW (Diber)	0.600		10kV	121	131	112	172	238	144	91	69	61	1,140
Hec "Homesh" me fuqi 0.395 MW (Diber)	0.395	"Balkan Green Energy" shpk	10kV	51	86	55	78	56	38	3	-	-	367
Hec "Zerqan" me fuqi 0.625 MW (Diber)	0.625		6kV	62	80	163	191	192	151	131	101	87	1,158
Hec "Arras" me fuqi 4.8 MW (Diber)	4.800	"Balkan Green Energy" shpk	20kV	842	2,710	2,133	2,716	2,597	1,235	122	0	105	12,460
Hec "Orgjost" me fuqi 1.2 MW (Kukes)	1.200		10kV	404	689	712	780	702	717	286	99	86	4,475
Hec "Lekbibaj" me fuqi 1.4 MW (Tropoje)	1.400	"Balkan Green Energy" shpk	10kV	875	556	611	723	852	780	704	486	159	5,747
Hec "Dukagjin" me fuqi 0.64 MW (Shkoder)	0.640		10kV	151	117	157	167	194	210	249	261	252	1,758
Hec "Marjan" me fuqi 0.2 MW (Korce)	0.200	"Balkan Green Energy" shpk	10kV	-	-	-	-	-	-	0	0	-	-
Hec "Lozhan" me fuqi 0.1 MW (Korce)	0.100		10kV	62	48	40	84	61	21	0	0	-	317
Hec "Barmash" me fuqi 0.83 MW (Kolonje)	0.830	"Balkan Green Energy" shpk	10kV	319	352	331	220	136	71	31	0	-	1,460
Hec "Treske 2" me fuqi 0.25 MW (Korce)	0.250		10kV	92	118	120	125	95	38	0	0	-	587
Hec "Nikolic" me fuqi 0.7 MW (Korce)	0.700	"Balkan Green Energy" shpk	10kV	144	216	190	206	229	156	89	31	-	1,261
Hec "Funares" me fuqi 1.92 MW (Librazhd)	1.920		10kV	768	672	860	831	781	482	31	0	61	4,486
Hec "Lunik" me fuqi 0.2 MW (Librazhd)	0.200	"Balkan Green Energy" shpk	10kV	111	123	149	141	136	78	0	6	5	750
Hec "Kerpice" me fuqi 0.42 MW (Gramsh)	0.420		6kV	89	73	57	59	72	61	68	71	62	612
Hec "Ujanik" me fuqi 0.63 MW (Skrapar)	0.630	"Balkan Green Energy" shpk	10kV	204	270	201	243	261	-	136	0	15	1,332
Hec "Borsh" me fuqi 0.25 MW (Sarande)	0.250		6kV	109	135	-	268	94	65	53	48	45	818
Hec "Leshnice" me fuqi 0.38 MW (Sarande)	0.380	"Balkan Green Energy" shpk	10/6kV	124	138								

Hec Kamican	1.86	IGI 2005 shpk	35	-	100	691	1,277	705	219	18	0	-	3,010			
Hec Vardar	1.97	Gerti shpk	35	-	-	-	977	1,273	226	15	0	-	2,490			
Hec Stavec	6.5	Koka Ergj Stavec shpk	35	-	-	-	2,065	3,050	1,279	353	331	404	7,482			
Hec Kallis	2.13	ERDY Energy shpk	35	-	-	-	-	223	466	254	128	116	1,187			
Hec Gjinar	0.83	Erdi Gas shpk	10	-	-	-	-	38	69	33	13	15	169			
Hec Backa 1	3.36	Kroi Mbret shpk	35	-	-	-	-	811	644	3	-	-	1,458			
Hec Ptepi	2.28	Domi Tec shpk	35	-	-	-	-	154	41	4	-	-	200			
Hec Zall Xhuxhe	4.7	Hec Zall Xhuxhe	35	-	-	-	-	267	461	237	13	12	990			
Hec Pisha	1.9	Green TECH energy systems	35	-	-	-	-	-	-	2	0	4	6			
Hec Lingjanca1&2												36	36			
	314						123,027	127,093	106,488	137,599	115,240	51,400	21,140	12,333	11,620	705,850

683,233.16

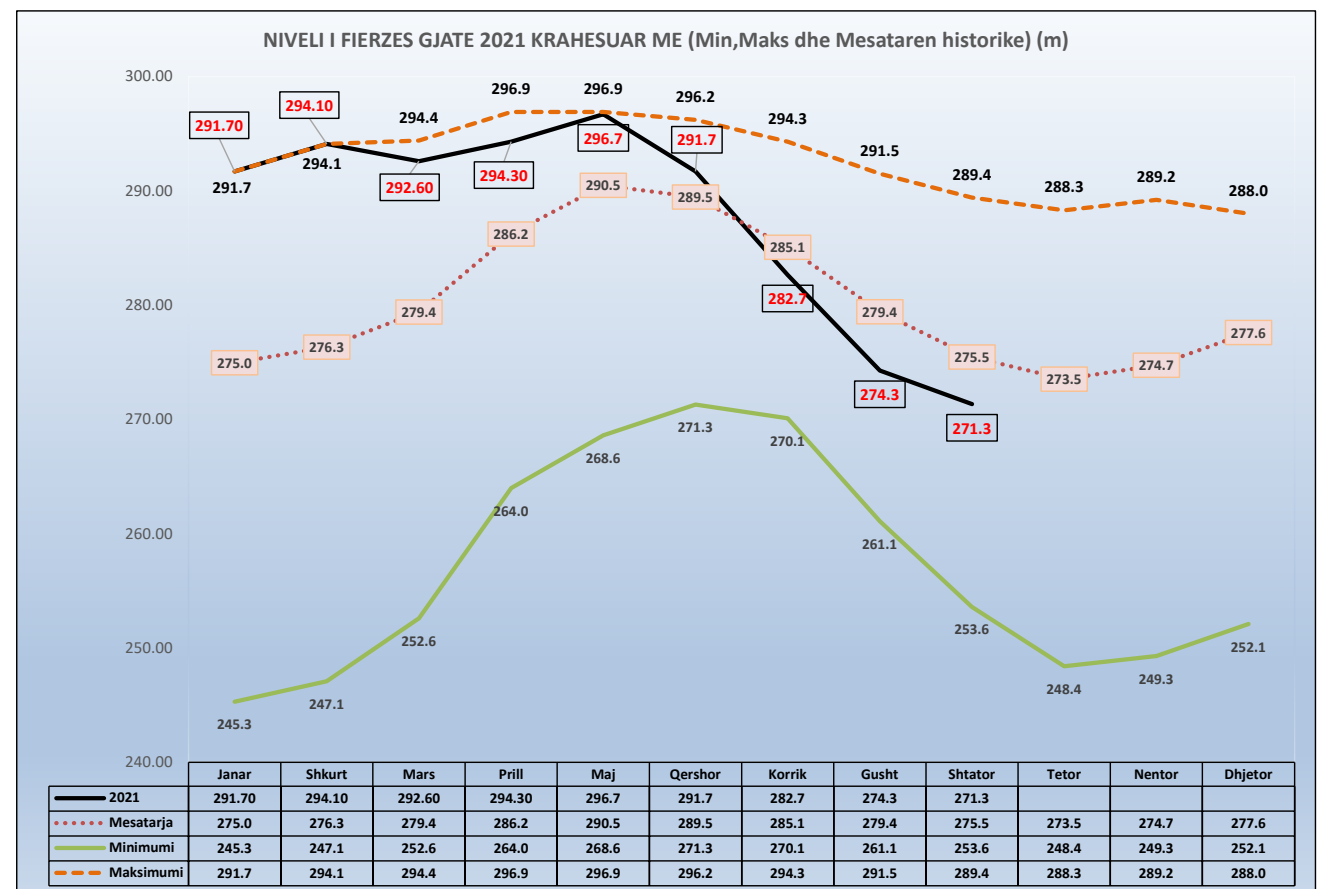
PRODHIMI GJATE VITIT 2021 NGA CENTRALET FOTOVOLTAIKE TË LIDHURA NE RRJETIN E SHPERNDARJES (MWh)														
CENTRAL FOTOVOLTAIK		MW	SUBJEKTI	LIDHJA	JANAR	SHKURT	MARS	PRILL	MAJ	Qershor	Korrik	Gusht	Shtator	9-M 2021
UKKO (pa sistemuarne sistem)	1	"UKKO"sha (Ujstjell.Kanal.Korce)												
Seman - 2	2	"SEMAN2SUN" sh.p.k	35 kV	166	241	365	368	465	483	490	448	373	373	3,399
Topojë	2	"SONNE" sh.p.k	35 kV	165	240	368	368	464	480	485	444	371	371	3,384
Topojë 2	2	"AED SOLAR" sh.p.k	35 kV	165	239	430	304	463	478	484	443	370	370	3,377
Topojë (Sheq Marinas)	2	"AGE SUNPOWER" sh.p.k	35 kV	164	239	365	367	462	478	485	444	371	371	3,376
Topojë (Sheq Marinas) 2	2	"SEMAN SUNPOWER" sh.p.k	35 kV	167	243	370	371	467	483	489	448	375	375	3,412
Seman I solar	2	"SEMANISOLAR" sh.p.k	35 kV	174	245	366	359	447	455	462	432	368	368	3,308
FV Lugano	2	ES 2019 sh.p.k	35 kV	187	271	414	385	476	488	505	471	399	399	3,596
FV SMART WATT	2	SMART WATT sh.p.k	35 kV	188	271	411	383	473	488	502	467	397	397	3,581
Tren Bilisht	2	"RTS" sh.p.k	35 kV	164	259	328	333	414	402	423	426	322	322	3,071
STATKRAFT Renewbles albani PV Lunderues banje	2	"STATKRAFT"	35 kV	0	0	0	0	0	13	0	0	-	-	13
Plug, Lushnje	2	"AEE" sh.p.k	10 kv	192	239	362	471	543	489	519	566	407	407	3,789
	23				1,734	2,488	3,779	3,708	4,674	4,737	4,844	4,588	3,754	34,306

Kapaciteti Instaluar i gjithe prodhuesve **2,588** MW

Prodhimi Vendas

	NIVELI I FIERZES 1991-2021											
	Janar	Shkurt	Mars	Prill	Maj	Qershor	Korrik	Gusht	Shtator	Tetor	Nentor	Dhjetor
1991	254.4	260.8	268.6	279.9	293.4	296.1	294.0	291.5	289.4	288.3	288.8	285.1
1992	278.0	274.1	268.0	278.8	281.0	279.6	275.2	268.7	263.9	271.4	281.9	280.6
1993	275.2	265.3	264.7	278.5	280.5	277.3	271.0	261.1	253.6	249.9	255.6	270.2
1994	254.4	260.8	268.6	279.9	293.4	296.1	294.0	291.5	289.4	288.3	288.8	285.1
1995	253.8	260.3	262.5	275.3	289.0	288.7	284.5	282.2	288.2	283.8	279.9	287.5
1996	287.1	288.7	286.5	294.7	295.8	293.1	287.6	282.2	285.1	284.3	289.2	291.3
1997	289.4	284.5	281.7	285.2	294.1	292.0	287.0	280.0	272.9	272.4	270.8	277.2
1998	273.7	270.0	265.2	278.9	288.1	287.4	281.8	277.6	276.0	277.1	279.0	277.1
1999	272.7	275.6	281.5	290.5	295.9	293.3	288.3	279.5	271.0	257.6	263.6	276.9
2000	276.4	276.7	276.8	286.9	286.6	280.1	273.5	267.5	261.6	248.4	249.3	252.1
2001	253.6	258.2	275.1	282.9	287.6	283.8	273.7	271.1	269.2	263.6	263.2	252.1
2002	245.3	247.1	252.6	264.0	268.6	271.3	270.1	267.8	274.3	286.1	285.3	284.0
2003	291.1	289.5	286.3	287.0	292.3	290.3	285.9	280.8	276.0	282.6	285.6	283.3
2004	284.7	290.8	293.4	296.0	296.2	296.2	293.1	286.3	281.1	280.0	286.1	288.0
2005	281.2	281.5	293.3	296.1	295.6	294.1	286.7	277.2	266.5	256.9	253.6	279.0
2006	283.5	288.6	294.4	295.9	296.5	295.9	293.8	290.2	285.3	278.7	266.2	256.2
2007	256.1	263.7	272.0	276.8	276.8	274.8	268.5	263.6	261.8	261.1	275.8	282.1
2008	285.1	289.7	290.9	295.5	295.3	295.7	294.3	288.6	283.9	280.9	285.2	286.5
2009	283.6	281.8	283.4	292.5	293.7	292.4	288.0	281.2	276.2	271.6	266.3	280.1
2010	290.1	289.2	293.9	296.0	296.3	294.4	291.8	288.6	284.9	285.2	284.3	287.5
2011	281.6	274.4	275.0	276.6	281.0	286.1	284.7	279.0	273.9	268.2	261.6	264.5
2012	265.8	267.7	262.0	280.2	293.4	294.4	288.4	280.4	261.4	261.6	269.0	276.6
2013	278.3	281.5	294.8	296.9	296.9	294.2	289.7	283.6	280.8	281.4	282.5	276.1
2014	275.1	277.5	274.6	285.3	292.9	294.9	291.7	286.8	285.5	285.0	284.8	286.3
2015	288.7	289.4	292.2	296.3	296.1	293.3	287.5	280.1	272.1	275.4	278.9	275.9
2016	289.9	292.4	291.8	296.5	296.2	295.6	290.5	285.4	283.3	288.4	288.9	281.6
2017	271.5	277.7	280.9	278.7	281.6	272.4	270.2	268.0	271.0	264.6	269.6	289.9
2018	289.7	292.0	295.0	296.5	296.4	296.0	294.0	287.5	277.9	270.2	266.5	267.3
2019	267.3	268.2	272.7	279.9	289.9	292.7	287.6	278.5	274.2	268.6	273.2	275.6
2020	271.62	271.98	283.50	288.55	293.6	291.7	284.6	276.5	273.5	274.1	268.7	272.7
2021	291.70	294.10	292.60	294.30	296.7	291.7	282.7	274.3	271.3			

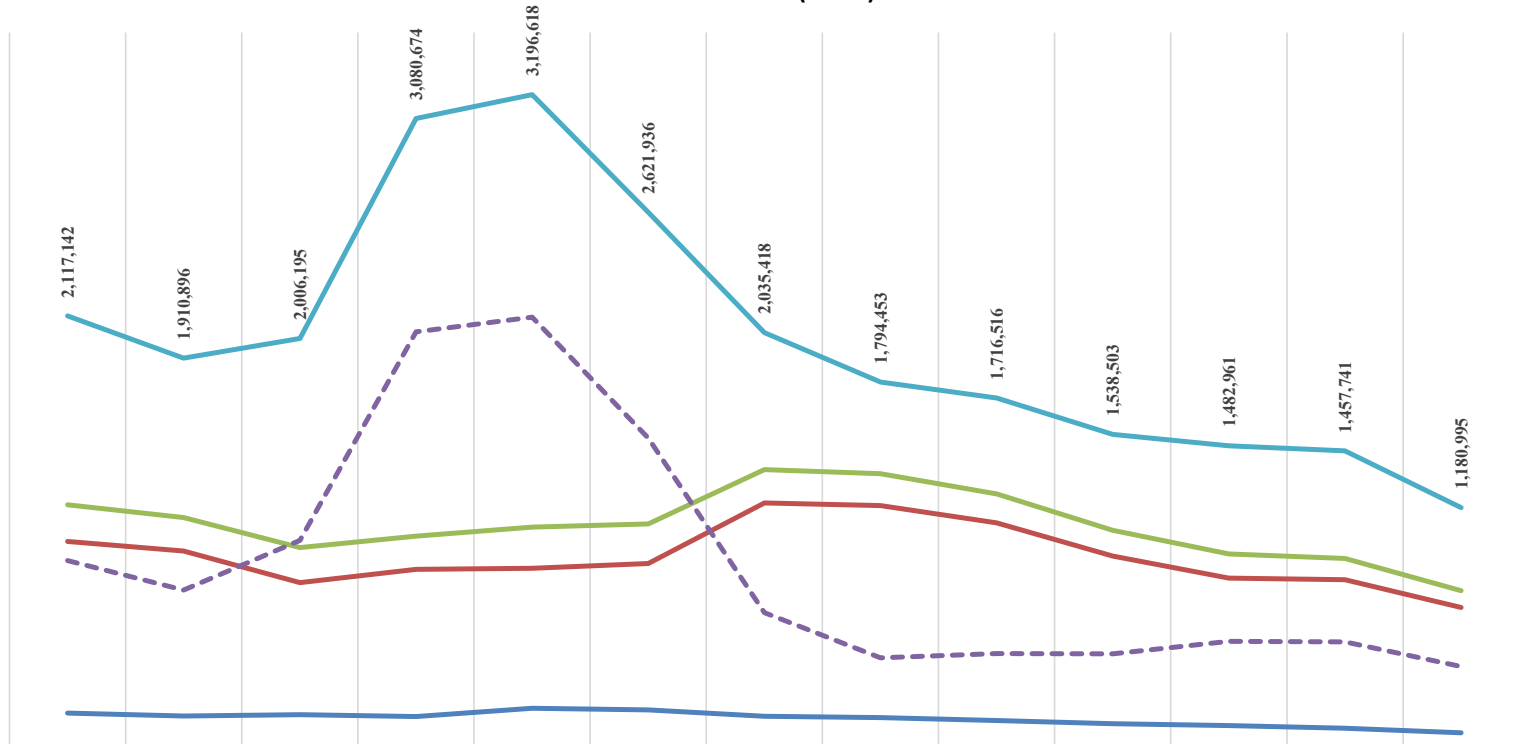
	Janar	Shkurt	Mars	Prill	Maj	Qershor	Korrik	Gusht	Shtator	Tetor	Nentor	Dhjetor
2021	291.70	294.10	292.60	294.30	296.7	291.7	282.7	274.3	271.3			
Mesatarja	275.0	276.3	279.4	286.2	290.5	289.5	285.1	279.4	275.5	273.5	274.7	277.6
Minimumi	245.3	247.1	252.6	264.0	268.6	271.3	270.1	261.1	253.6	248.4	249.3	252.1
Maksimumi	291.7	294.1	294.4	296.9	296.9	296.2	294.3	291.5	289.4	288.3	289.2	288.0



HUMBJET NE RRJETIN E SHPERNDARJES 2009-2021 (MWh)

	2009	2010	2011	2012	2013	2014	2015	2016	2017	2018	2019	2020	2021 (9-Mujori)
HUMBJE TEKNIKE NE TL (N/ST)	178,738	163,546	170,937	161,831	201,684	193,208	162,725	155,629	141,707	125,974	117,739	103,729	81,940
HUMBJE TEKNIKE NE ZONAT E OSSH	1,015,450	968,535	814,826	879,616	884,360	908,416	1,203,793	1,190,872	1,106,007	944,587	836,561	828,906	693,623
TOTALI I HUMBJEVE TEKNIKE OSSH	1,194,188	1,132,081	985,763	1,041,447	1,086,044	1,101,624	1,366,518	1,346,501	1,247,714	1,070,560	954,300	932,635	775,563
HUMBJE JOTOKNIKE OSSH	922,954	778,815	1,020,432	2,039,227	2,110,575	1,520,312	668,900	447,952	468,802	467,943	528,661	525,106	405,432
TOTALI I HUMBJEVE OSSH	2,117,142	1,910,896	2,006,195	3,080,674	3,196,618	2,621,936	2,035,418	1,794,453	1,716,516	1,538,503	1,482,961	1,457,741	1,180,995

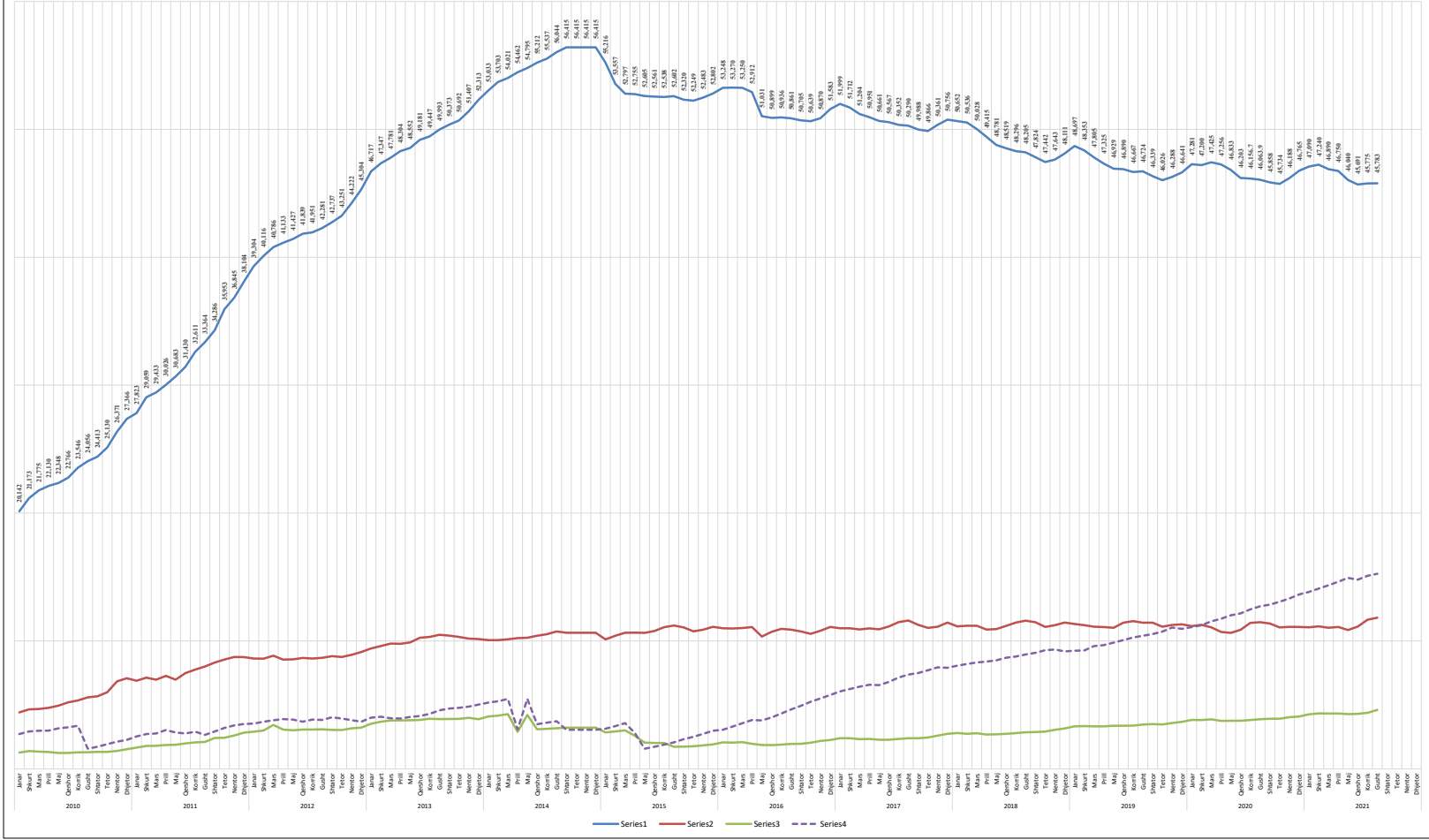
HUMBJET NE RRJETIN E SHPERNDARJES 2009-2021 (MWh)



	2009	2010	2011	2012	2013	2014	2015	2016	2017	2018	2019	2020	2021 (9-Mujori)
— HUMBJE TEKNIKE NE TL (N/ST)	178,738	163,546	170,937	161,831	201,684	193,208	162,725	155,629	141,707	125,974	117,739	103,729	81,940
— HUMBJE TEKNIKE NE ZONAT E OSSH	1,015,450	968,535	814,826	879,616	884,360	908,416	1,203,793	1,190,872	1,106,007	944,587	836,561	828,906	693,623
— TOTALI I HUMBJEVE TEKNIKE OSSH	1,194,188	1,132,081	985,763	1,041,447	1,086,044	1,101,624	1,366,518	1,346,501	1,247,714	1,070,560	954,300	932,635	775,563
— HUMBJE JOTOKNIKE OSSH	922,954	778,815	1,020,432	2,039,227	2,110,575	1,520,312	668,900	447,952	468,802	467,943	528,661	525,106	405,432
— TOTALI I HUMBJEVE OSSH	2,117,142	1,910,896	2,006,195	3,080,674	3,196,618	2,621,936	2,035,418	1,794,453	1,716,516	1,538,503	1,482,961	1,457,741	1,180,995

Year	Janar	Feb	Mar	Apr	Maj	Jun	Juli	Aug	Sep	Okto	Nov	Dhjetor	Total
2010	21,775	21,175	22,448	22,448	21,746	21,746	22,448	22,448	22,448	21,746	21,746	21,746	217,500
2011	22,448	22,448	22,448	22,448	22,448	22,448	22,448	22,448	22,448	22,448	22,448	22,448	277,376
2012	22,448	22,448	22,448	22,448	22,448	22,448	22,448	22,448	22,448	22,448	22,448	22,448	277,376
2013	22,448	22,448	22,448	22,448	22,448	22,448	22,448	22,448	22,448	22,448	22,448	22,448	277,376
2014	22,448	22,448	22,448	22,448	22,448	22,448	22,448	22,448	22,448	22,448	22,448	22,448	277,376
2015	22,448	22,448	22,448	22,448	22,448	22,448	22,448	22,448	22,448	22,448	22,448	22,448	277,376
2016	22,448	22,448	22,448	22,448	22,448	22,448	22,448	22,448	22,448	22,448	22,448	22,448	277,376
2017	22,448	22,448	22,448	22,448	22,448	22,448	22,448	22,448	22,448	22,448	22,448	22,448	277,376
2018	22,448	22,448	22,448	22,448	22,448	22,448	22,448	22,448	22,448	22,448	22,448	22,448	277,376
2019	22,448	22,448	22,448	22,448	22,448	22,448	22,448	22,448	22,448	22,448	22,448	22,448	277,376
2020	22,448	22,448	22,448	22,448	22,448	22,448	22,448	22,448	22,448	22,448	22,448	22,448	277,376
2021	22,448	22,448	22,448	22,448	22,448	22,448	22,448	22,448	22,448	22,448	22,448	22,448	277,376

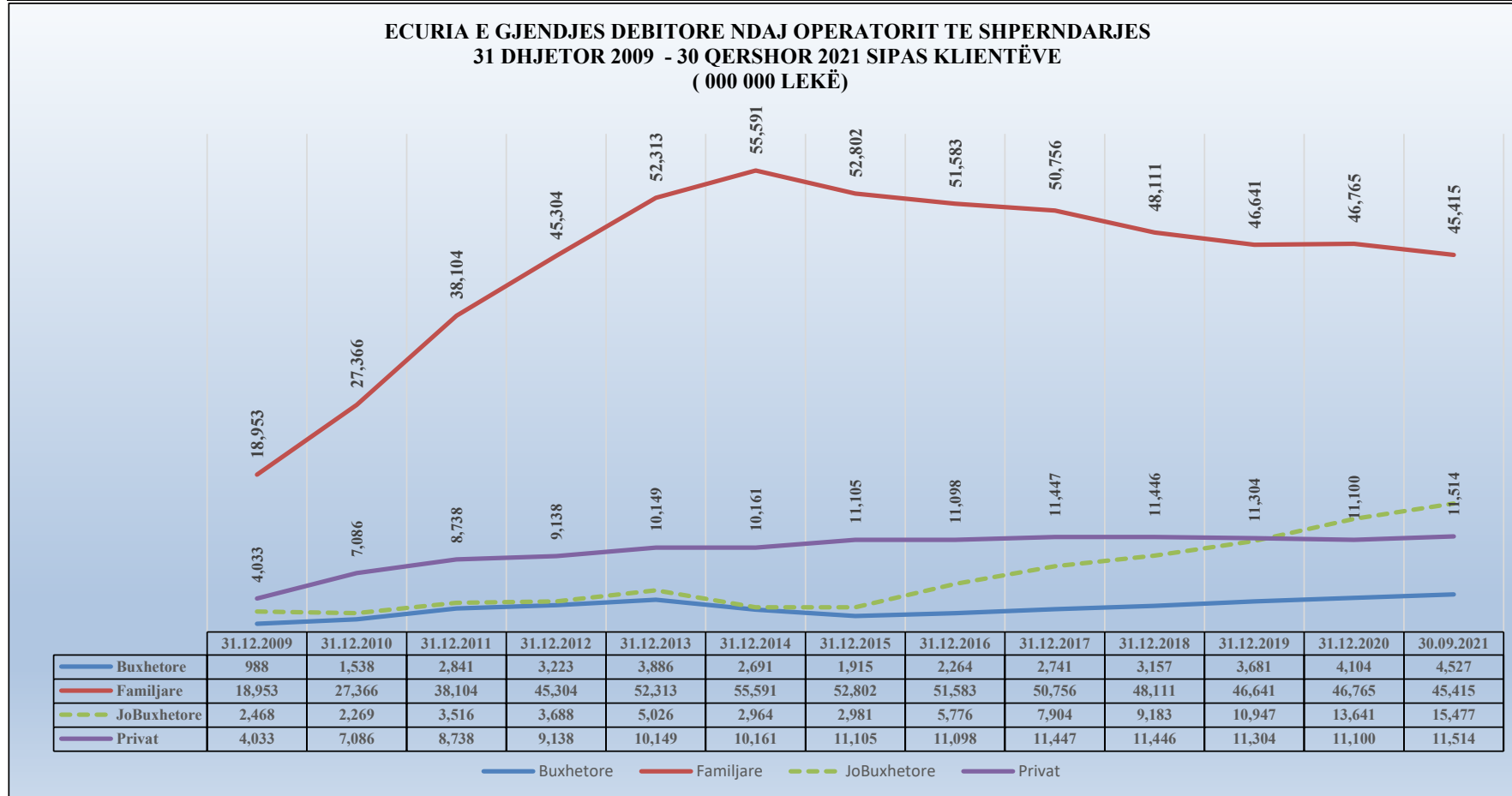
ECURIA E GJENDJES DEBITORE NDAJ OPERATORIT TË SHIPËRDARJES SIPAS KATEGORIVE 2010-2021 (000 000/LEKË)



ECURIA E GJENDJES DEBITORE NDAJ OSHEE 31 DHJETOR 2009 - 30 Shtator 2021 (000 000 LEKË)

	31.12.2009	31.12.2010	31.12.2011	31.12.2012	31.12.2013	31.12.2014	31.12.2015	31.12.2016	31.12.2017	31.12.2018	31.12.2019	31.12.2020	30.09.2021
Buxhetore	988	1,538	2,841	3,223	3,886	2,691	1,915	2,264	2,741	3,157	3,681	4,104	4,527
Familjare	18,953	27,366	38,104	45,304	52,313	55,591	52,802	51,583	50,756	48,111	46,641	46,765	45,415
JoBuxhetore	2,468	2,269	3,516	3,688	5,026	2,964	2,981	5,776	7,904	9,183	10,947	13,641	15,477
Privat	4,033	7,086	8,738	9,138	10,149	10,161	11,105	11,098	11,447	11,446	11,304	11,100	11,514
Total	26,442	38,260	53,198	61,353	71,374	71,406	68,803	70,720	72,849	71,897	72,574	75,610	76,933

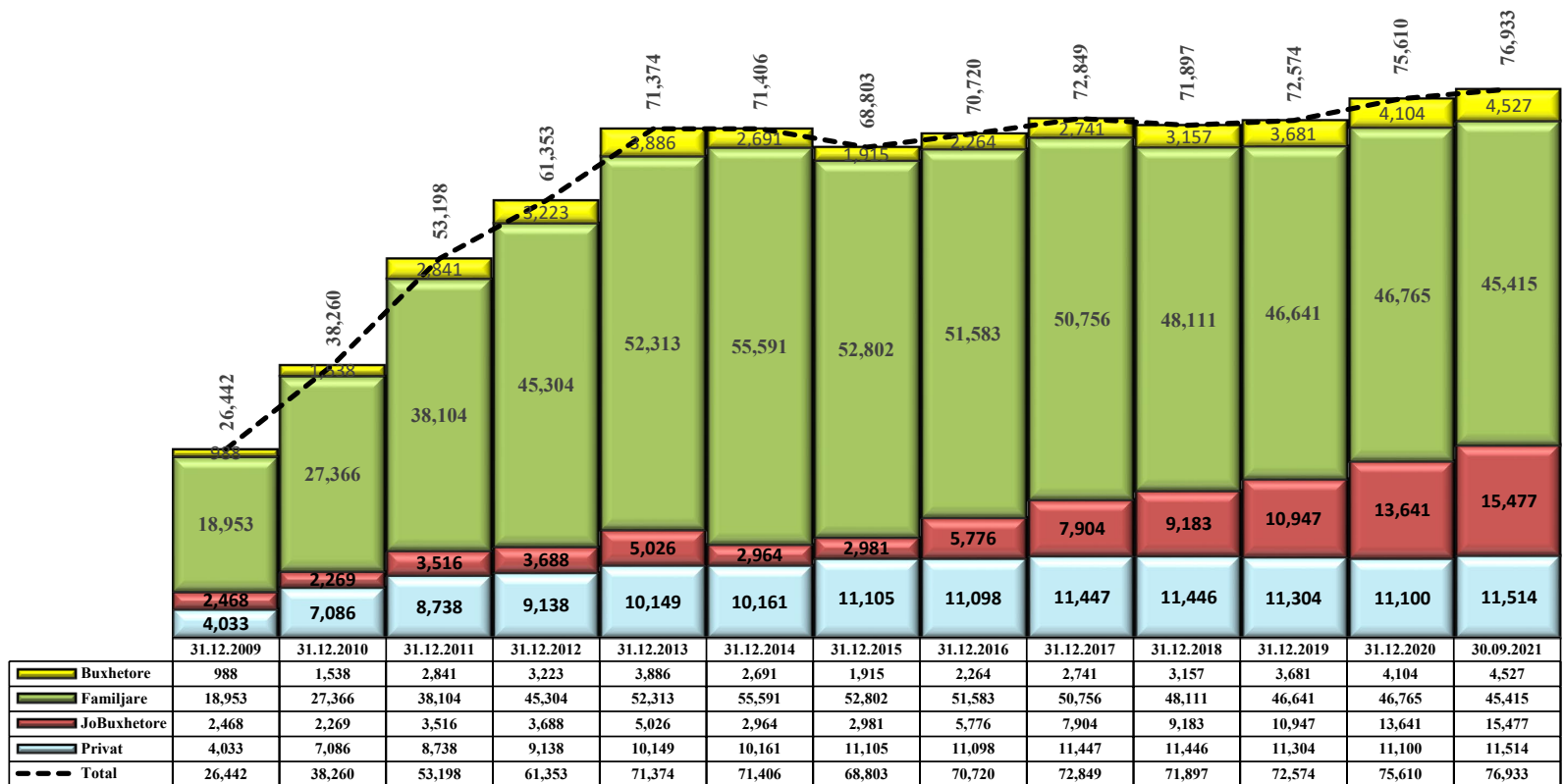
**ECURIA E GJENDJES DEBITORE NDAJ OPERATORIT TE SHPERNDARJES
31 DHJETOR 2009 - 30 QERSHOR 2021 SIPAS KLIENTËVE
(000 000 LEKË)**



Burimi OSHEE sha

	31.12.2009	31.12.2010	31.12.2011	31.12.2012	31.12.2013	31.12.2014	31.12.2015	31.12.2016	31.12.2017	31.12.2018	31.12.2019	31.12.2020	30.09.2021
Privat	4,033	7,086	8,738	9,138	10,149	10,161	11,105	11,098	11,447	11,446	11,304	11,100	11,514
JoBuxhetore	2,468	2,269	3,516	3,688	5,026	2,964	2,981	5,776	7,904	9,183	10,947	13,641	15,477
Familjare	18,953	27,366	38,104	45,304	52,313	55,591	52,802	51,583	50,756	48,111	46,641	46,765	45,415
Buxhetore	988	1,538	2,841	3,223	3,886	2,691	1,915	2,264	2,741	3,157	3,681	4,104	4,527
Total	26,442	38,260	53,198	61,353	71,374	71,406	68,803	70,720	72,849	71,897	72,574	75,610	76,933

**ECURIA E GJENDJES DEBITORE NDAJ OPERATORIT TE SHPERNDARJES
31 DHJETOR 2009 - 31 Gusht 2021 SIPAS KLIENTËVE
(000 000 LEKË)**



PERFORMANCA E OPERATOTRIT TE SHPERNDARJES 2009-2021 (%)

NIVELI I HUMBJEVE (%) 2009-2021												
	Janar	Shkurt	Mars	Prill	Maj	Qershor	Korrik	Gusht	Shtator	Tetor	Nentor	Dhjetor
2009	40.75	37.05	38.05	32.93	33.44	30.75	32.60	30.20	25.34	30.67	33.44	36.89
2010	38.62	35.41	36.90	31.37	35.17	31.45	26.94	29.69	21.47	20.61	22.16	29.05
2011	55.55	38.00	36.95	23.11	24.85	21.29	21.88	19.41	22.95	25.15	32.20	35.70
2012	35.72	59.16	55.23	45.41	38.87	39.77	45.51	45.51	42.09	35.53	41.89	49.32
2013	51.12	48.71	48.29	39.66	39.52	40.33	43.33	38.50	35.08	45.98	48.08	53.04
2014	47.00	42.14	42.78	35.69	36.85	34.10	36.59	36.36	31.67	34.52	32.88	37.54
2015	36.68	31.82	32.88	30.54	31.24	28.60	30.62	29.29	25.30	29.92	30.82	34.50
2016	34.69	29.00	29.93	26.07	26.97	24.35	25.97	25.15	22.12	27.11	29.30	30.99
2017	33.50	27.63	28.66	25.81	25.88	28.31	24.69	23.29	19.79	23.76	23.55	27.90
2018	30.65	24.91	27.22	23.33	23.03	20.76	21.46	20.77	19.32	21.53	22.73	26.70
2019	29.25	23.21	26.5	21.36	22.10	19.92	20.42	19.81	17.54	20.40	21.58	24.76
2020	28.22	21.61	28.36	17.39	19.10	18.65	19.69	18.87	16.80	21.21	22.79	20.49
2021	27.87	20.1	25.92	21.08	17.92	18.34	18.75	17.93	16.22			

26.41
23.9
21.79
21.48
20.94

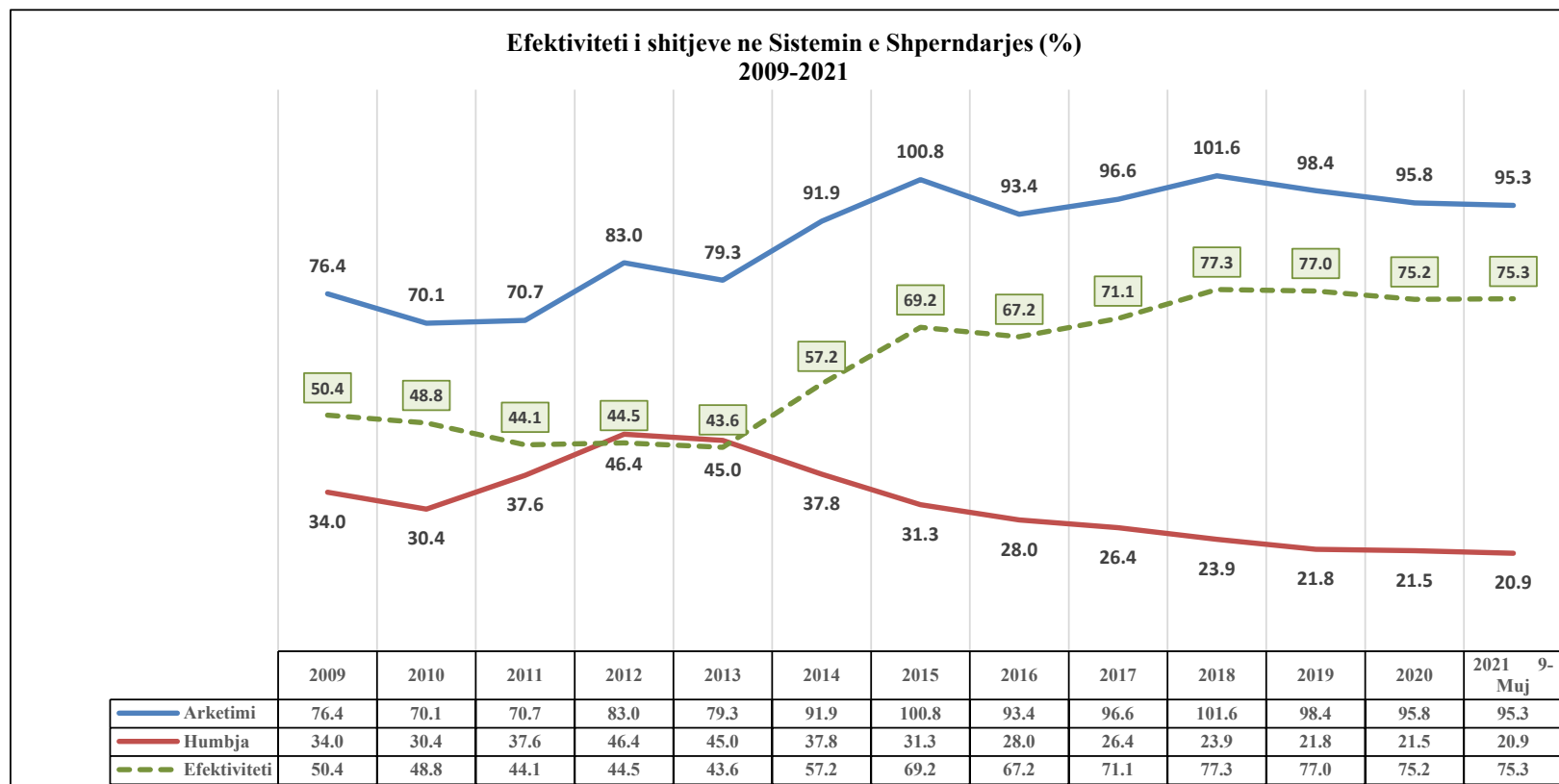
Niveli i Arketimeve (%) 2009-2021												
	Janar	Shkurt	Mars	Prill	Maj	Qershor	Korrik	Gusht	Shtator	Tetor	Nentor	Dhjetor
2009	69.32	85.95	74.38	86.58	86.31	76.37	75.40	72.46	83.20	80.82	61.77	70.01
2010	55.37	66.28	86.63	89.46	86.70	79.42	74.84	124.98	84.20	70.81	56.15	66.48
2011	67.26	57.61	87.66	71.61	96.73	73.00	65.00	81.00	66.00	63.86	51.47	87.30
2012	59.80	79.20	78.50	78.00	94.70	83.50	91.60	102.90	74.00	98.00	72.60	78.00
2013	61.40	63.70	86.20	80.70	79.10	69.60	87.90	90.10	78.50	84.30	89.00	102.00
2014	84.90	77.10	85.90	85.50	81.90	80.20	86.70	83.60	102.60	101.00	101.90	141.00
2015	112.70	120.50	103.70	86.60	95.70	97.10	98.40	104.70	95.30	100.30	92.20	100.70
2016	92.10	87.00	95.60	90.10	99.10	92.00	94.20	96.70	91.50	96.70	90.30	96.70
2017	85.20	87.60	105.70	94.50	105.70	91.80	104.80	97.40	94.60	103.80	92.70	100.10
2018	96.39	95.69	105.82	98.92	111.64	100.16	105.00	102.12	93.03	108.76	96.24	108.94
2019	90.7	92.6	99.8	102.4	102.50	94.00	104.40	99.30	93.90	104.70	89.60	110.70
2020	91.4	91.6	77.5	106.8	101.80	102.20	96.80	95.30	96.60	101.10	91.50	101.80
2021	86.4	88.9	102.1	91	101.20	110.70	96.90	94.10	90.70			

96.6
101.6
98.4
95.8
95.3

Efektiviteti i shitjeve (%) 2009-2021												
	Janar	Shkurt	Mars	Prill	Maj	Qershor	Korrik	Gusht	Shtator	Tetor	Nentor	Dhjetor
2009	41.1%	54.1%	46.1%	58.1%	57.4%	52.9%	50.8%	50.6%	62.1%	56.0%	41.1%	44.2%
2010	34.0%	42.8%	54.7%	61.4%	56.2%	54.4%	54.7%	87.9%	66.1%	56.2%	43.7%	47.2%
2011	29.9%	35.7%	55.3%	55.1%	72.7%	57.5%	50.8%	65.3%	50.9%	47.8%	34.9%	56.1%
2012	38.4%	32.3%	35.1%	42.6%	57.9%	50.3%	49.9%	56.1%	42.9%	63.2%	42.2%	39.5%
2013	30.0%	32.7%	44.6%	48.7%	47.8%	41.5%	49.8%	55.4%	51.0%	45.5%	46.2%	47.9%
2014	45.0%	44.6%	49.2%	55.0%	51.7%	52.9%	55.0%	53.2%	70.1%	66.1%	68.4%	88.1%
2015	71.4%	82.2%	69.6%	60.2%	65.8%	69.3%	68.3%	74.0%	71.2%	70.3%	63.8%	66.0%
2016	60.2%	61.8%	67.0%	66.6%	72.4%	69.6%	69.7%	72.4%	71.3%	70.5%	63.8%	66.7%
2017	56.7%	63.4%	75.4%	70.1%	78.3%	65.8%	78.9%	74.7%	75.9%	79.1%	70.9%	72.2%
2018	66.8%	71.9%	77.0%	75.8%	85.9%	79.4%	82.5%	80.9%	75.1%	85.3%	74.4%	79.9%
2019	64.2%	71.1%	73.4%	80.5%	79.8%	75.3%	83.1%	79.6%	77.4%	83.3%	70.3%	83.3%
2020	65.6%	71.8%	55.5%	88.2%	82.4%	83.1%	77.7%	77.3%	80.4%	79.7%	70.6%	80.9%
2021	62.3%	71.0%	75.6%	71.8%	83.1%	90.4%	78.7%	77.2%	76.0%	0.0%	0.0%	0.0%

71.1%
77.3%
77.0%
75.2%
75.3%

	2009	2010	2011	2012	2013	2014	2015	2016	2017	2018	2019	2020	2021 9-Muj
Arketimi	76.4	70.1	70.7	83.0	79.3	91.9	100.8	93.4	96.6	101.6	98.4	95.8	95.3
Humbja	34.0	30.4	37.6	46.4	45.0	37.8	31.3	28.0	26.4	23.9	21.8	21.5	20.9
Efektiviteti	50.4	48.8	44.1	44.5	43.6	57.2	69.2	67.2	71.1	77.3	77.0	75.2	75.3



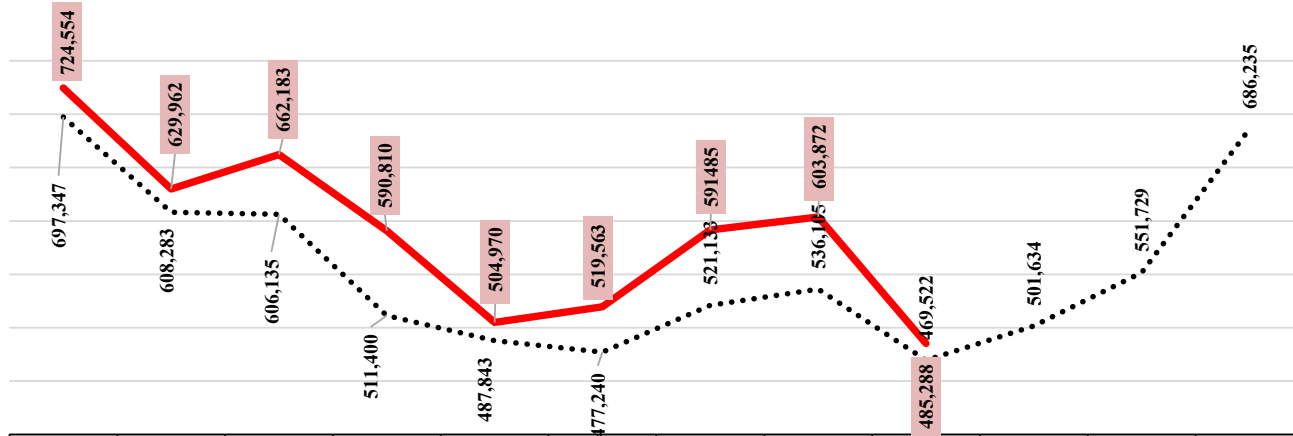
Energji Totale ne Operatorin e Sistemit te Shperndarjes 2009-2021 ne MWh

	Janar	Shkurt	Mars	Prill	Maj	Qershor	Korrik	Gusht	Shtator	Tetor	Nentor	Dhjetor	VITI
2009	644,987	568,719	589,279	462,709	448,118	427,694	467,863	493,772	439,604	489,635	557,554	639,797	6,229,731
2010	675,343	608,940	610,583	506,275	476,500	464,120	499,241	512,024	460,893	509,793	532,126	660,665	6,516,503
2011	708,264	623,208	634,087	536,286	533,564	495,139	545,315	567,282	512,979	551,132	619,655	710,870	7,037,781
2012	733,973	680,054	596,982	537,950	483,891	489,723	536,891	540,566	469,527	484,706	548,289	749,398	6,851,949
2013	743,846	665,392	673,578	545,600	502,945	511,390	546,696	565,789	493,056	532,555	589,808	774,403	7,145,060
2014	733,468	631,678	645,837	578,948	541,016	501,088	530,554	556,098	492,427	537,280	546,419	640,431	6,935,244
2015	686,041	591,978	594,775	514,282	472,405	465,730	536,160	529,208	459,012	476,969	519,281	649,026	6,494,867
2016	671,884	559,772	573,419	469,803	477,468	463,248	509,916	514,034	451,153	480,236	540,024	688,760	6,399,717
2017	715,886	562,270	545,214	493,731	475,055	485,386	529,805	543,145	451,103	482,629	546,256	667,841	6,498,322
2018	659,778	590,823	597,595	468,417	467,468	468,885	508,892	539,134	465,468	471,407	517,882	681,162	6,436,911
2019	735,813	586,992	559,331	500,485	501,061	500,729	533,842	565,788	471,684	472,833	507,920	639,953	6,576,432
2020	708,611	607,803	589,581	489,236	464,183	463,789	527,801	533,336	482,358	506,280	562,127	669,977	6,605,082
2021	724,554	629,962	662,183	590,810	504,970	519,563	591,485	603,872	485,288				

	Janar	Shkurt	Mars	Prill	Maj	Qershor	Korrik	Gusht	Shtator	Tetor	Nentor	Dhjetor
Mesatarja	697,347	608,283	606,135	511,400	487,843	477,240	521,133	536,105	469,522	501,634	551,729	686,235
2021	724,554	629,962	662,183	590,810	504,970	519,563	591,485	603,872	485,288			
Diferenca	27,207	21,679	56,048	79,410	17,127	42,323	70,352	67,767	15,766			

Burimi OSHEE sha

**MESATARJA 10 VJEÇARE E ENERGJISË TOTALE NË RRJETIN E SHPËRNDARJES
SIPAS MUAJVE TË VITIT (MWh)**



	Janar	Shkurt	Mars	Prill	Maj	Qershor	Korrik	Gusht	Shtator	Tetor	Nentor	Dhjetor
..... Mesatarja	697,347	608,283	606,135	511,400	487,843	477,240	521,133	536,105	469,522	501,634	551,729	686,235
— 2021	724,554	629,962	662,183	590,810	504,970	519,563	591,485	603,872	485,288			

NR	KLIENTET E KUALIFIKUAR	KLIENTET E "KUALIFIKUAR" PER VITIN 2021									
		Energjia e faturuar ne [MWh]									
		Janar	Shkurt	Mars	Prill	Maj	Qershor	Korrik	Gusht	Shtator	Totali
1	N/ST i GSA EL i ri 110kV-T1/694	9,128	8,183	9,056	8,709	9,029	7,922	5,496	0	0	57,522
2	N/ST i GSA EL 110kV-T2/960	0	0	0	0	0	0	6,576	16,424	16,713	39,713
3	TEC Ballsh	73	62	68	62	56	51	52	53	54	530
4	Titan T1,T2	8,210	4,226	11,668	11,488	11,470	9,223	7,117	10,749	8,838	82,990
5	FERROKROM	7,413	6,638	9,847	12,549	12,295	12,447	13,122	13,168	12,629	100,110
6	FUSHE KRUJE 220kV-T2/058	8,497	2,516	10,007	12,804	13,635	11,522	12,046	12,141	10,588	93,756
7	N/ST 220/6,3Colacent-T1/336	539	902	1,312	1,472	1,402	1,344	1,513	1,554	1,599	11,637
8	EL220-L220KURUM/338	31,422	24,419	13,837	33,251	35,512	33,794	33,860	31,829	30,991	268,914
9	Lajthiza T1/742	367	368	406	408	444	459	515	575	512	4,054
10	F.Arrez-T3/653	1,166	957	1,432	881	1,158	711	1,148	1,337	652	9,442
11	N/ST i AES EL 110kV-T1/690	7,374	6,447	7,060	7,050	7,370	6,874	7,426	7,415	7,114	64,131
12	N/ST I AES EL 110kV-T2/692	79	4,883	7,347	7,391	7,604	7,287	7,825	7,689	7,484	57,590
14	ENERGJI ASHTA (ASHTA 1) Konsum	0	0	0	0	0	0	0	0	0	0
16	ENERGJI ASHTA (ASHTA 2) Konsum	0	0	0	0	0	0	0	0	0	0
18	ENERGJI ULEZ (ULEZ) Konsum	0	1	1	0	0	14	28	34	31	109
20	ENERGJI SHKOPET (SHKOPET) Konsum	0	0	0	0	0	0	0	0	0	0
22	ENERGJI BISTRICE (BISTRICE) Konsum	0	0	0	0	0	0	0	0	0	0
24	ENERGJI PESHQESH (AYEN) Konsum	3	2	4	0	4	29	38	34	33	148
26	ENERGJI FANG (AYEN) Konsum	1	8	25	25	34	26	32	19	13	184
28	ENERGJI BANJA (DEVOLL HPP) Konsum	6	2	11	13	16	25	20	24	21	138
30	ENERGJI HEC MOGLICE (DEVOLL HPP) Konsum	5	14	1	4	0	22	14	0	24	85
	Totali mujor	74,278	59,613	72,082	96,102	100,028	91,728	96,815	103,045	97,274	790,966

Devijimet ne Programin e Interkoneksionit 2021 (MWh)

<i>Minus = Hyrje</i>			<i>Plus = Dalje</i>										
Data	Janar	Shkurt	Mars	Prill	Maj	Qershor	Korrik	Gusht	Shtator	Tetor	Nentor	Dhjetor	2021
1	55	2,277	178	63	195	145	34	25	5				2,978
2	22	2,036	270	103	190	-20	155	-164	138				2,730
3	84	2,226	-10	118	235	90	638	-418	463				3,426
4	122	577	28	147	187	35	391	-493	419				1,413
5	-569	769	45	55	125	30	65	-642	786				665
6	41	21	215	63	103	107	-82	-445	367				391
7	-6	555	127	-73	107	164	-180	495	434				1,624
8	254	741	129	-121	45	127	203	382	403				2,163
9	594	59	206	68	83	43	-145	0	143				1,050
10	537	436	110	-3	-16	71	273	-136	124				1,396
11	21	420	159	53	187	335	418	-362	319				1,550
12	194	1,141	158	90	109	144	139	-277	257				1,956
13	-1,630	-480	122	125	905	537	28	-9	173				-228
14	-1,528	-245	197	140	637	21	68	89	20				-602
15	433	445	309	26	201	12	-78	243	31				1,621
16	265	377	307	103	67	-35	-189	400	215				1,510
17	-288	563	142	112	-173	72	376	-89	406				1,123
18	693	225	129	199	334	115	760	24	614				3,094
19	831	196	179	155	195	83	149	244	588				2,618
20	-178	35	171	148	168	193	174	427	601				1,740
21	781	46	201	104	215	-145	257	456	110				2,024
22	981	-14	123	176	335	-183	138	1097	120				2,773
23	487	51	-85	90	119	-435	165	477	-188				682
24	208	164	290	190	329	73	209	9	310				1,781
25	1,869	79	295	258	191	125	63	111	132				3,124
26	1,588	265	211	238	258	93	139	451	179				3,423
27	1,946	220	282	199	293	684	-30	499	-6				4,088
28	602	293	180	252	164	60	-75	283	46				1,805
29	119	0	369	207	116	178	-81	1165	-19				2,053
30	1,166	0	260	132	62	-27	-26	782	2				2,350
31	2,145	0	267	0	61	0	156	135					2,763
Total	11,839	13,479	5,562	3418	6,029	2,693	4,113	4,759	7190				59,081

Burimi OST sha

Tabela me te dhenat e Alokimit te ATC 2021

Ankandi	Periudha	Shqiperi - Mali Zi						Shqiperi - Greqi						Shqiperi - Kosove											
		ATC e ofruar ne Ankand		ATC e shitur ne Ankand		Cmimi Ankandit		ATC e ofruar ne Ankand		ATC e shitur ne Ankand		Cmimi Ankandit		ATC e ofruar ne Ankand		ATC e shitur ne Ankand		Cmimi Ankandit							
		Export	Import	Export	Import	Export	Import	Export	Import	Export	Import	Export	Import	Export	Import	Export	Import	Export	Import						
		[MW]	[MW]	[MW]	[MW]	[Euro/MWh]	[Euro/MWh]	[MW]	[MW]	[MW]	[MW]	[Euro/MWh]	[Euro/MWh]	[MW]	[MW]	[MW]	[MW]	[Euro/MWh]	[Euro/MWh]						
Janar	01.01.2021-31.01.2021	100	100	100	100	0.15	4.77	150	150	150	150	0.84	1.28	200	200	200	200	0.30	0.77						
Shkurt	01.02.2021-28.02.2021	100	100	100	100	0.66	0.89	250	250	250	250	0.69	0.4	200	200	200	200	0.28	0.11						
Mars	01.03.2021-31.03.2021	113	100	113	100	6.01	0.68	250	259	250	257	4.75	0.15	82	55	82	55	4.88	0.21						
Prill	01.04.2021-04.04.2021	100	100	100	100	1.69	0.63	250	250	250	250	2.568	0.05	50	50	50	50	2.11	0.33						
	05.04.2021-07.04.2021	0	0	0	0																				
	08.04.2021-09.04.2021	100	100	100	100	1.95	0.62	250		2.88															
	09.04.2021-30.04.2021							250		2.568															
Maj	01.05.2021-02.05.2021	100	100	100	100	1.77	0.57	250	250	250	250	1.71	0.16	50	50	50	50	0.72	0.37						
	03.05.2021-04.05.2021							0	0	0	0														
	05.05.2021-07.05.2021							250	250	250	250														
	08.05.2021-16.05.2021							350	350	350	350	1.71	0.16							50	50	50	50	0.82	0.37
	17.05.2021-21.05.2021							250	250	250	250														
	22.05.2021-31.05.2021																								
Qershor	01.06.2021-30.06.2021	100	100	100	100	2.55	0.44	250	250	250	250	2.2	0.25	50	50	50	50	0.72	0.51						
Korrik	01.07.2021-31.07.2021	100	100	100	100	0.56	0.66	250	250	250	250	0.88	0.18	200	200	200	200	0.12	0.33						
Gusht	01.08.2021-31.08.2021	100	100	100	100	0.4	1.8	250	250	250	250	1.2	0.47	200	200	200	199	0.03	0.69						
Shtator	01.09.2021-06.09.2021	100	100	100	100	0.4	3.62	200	200	200	200	1.5	0.49	200	200	200	200	0.1	1.03						
	07.09.2021-08.09.2021							100	100	100	100	1.5	0.49	100	100	98	99	0.1	1.03						
	09.09.2021-19.09.2021							0	0	0	0	1.5	0.49	200	200	200	200	0.1	1.03						
	20.09.2021-24.09.2021							100	100	100	100	1.5	0.49												
	25.09.2021-26.09.2021							0	0	0	0	1.5	0.49												
	27.09.2021-30.09.2021							0	0	0	0	1.5	0.49												
01.09.2021-30.09.2021	150	150	150	150	2.1	0.81																			

DISBALLANCA 2021 (9 - MUJORI)

*Ne MWh

Pale Pergjegjese Balancuese	JANAR		SHKURT		MARS		PRILL		MAJ		QERSHOR		KORRIK		GUSHT		SHTATOR		TOTALI 2021	
	Dis. Negative [MWh]	Dis. Pozitive [MWh]	Dis. Negative [MWh]	Dis. Pozitive [MWh]	Dis. Negative [MWh]	Dis. Pozitive [MWh]	Dis. Negative [MWh]	Dis. Pozitive [MWh]	Dis. Negative [MWh]	Dis. Pozitive [MWh]	Dis. Negative [MWh]	Dis. Pozitive [MWh]	Dis. Negative [MWh]	Dis. Pozitive [MWh]	Dis. Negative [MWh]	Dis. Pozitive [MWh]	Dis. Negative [MWh]	Dis. Pozitive [MWh]	Dis. Negative [MWh]	Dis. Pozitive [MWh]
KURUM INTERNATIONAL	1,917	773	1,035	3,292	446	445	1,035	695	963	1,251	879	772	755	1,382	798	1,371	1,018	861	8,845	10,842
DEVOLL HP	48	61	33	59	140	79	62	97	68	74	41	26	28	50	35	45	78	33	533	524
ENERGIA GAS & POWER ALBANIA	1,237	664	775	128	1,438	98	1,305	84	1,562	109	1,080	458	1,816	185	2,493	68	2,384	334	14,090	2,129
AYEN AS ENERGJI	1,326	335	552	198	123	95	80	128	156	163	104	24	66	17	49	23	45	16	2,502	998
GSA	627	1,648	195	742	1,198	751	1,034	1,016	1,122	1,863	1,355	2,001	2,018	1,511	2,149	1,283	1,000	1,312	10,699	12,126
Albanian Energy Supplier AES	1,906	52	2,850	151	2,431	141	1,198	160	1,496	476	1,586	119	2,115	117	2,109	118	2,043	94	17,733	1,429
Energji ASHTA	526	348	207	245	694	534													1,427	1,127
KESH (PPB)	4	107	5,167	69	2	97													5,173	273
KESH GRUP BALANCIMI (KESH & ASHTA)							5,897	2,444	882	7,520	1,271	4,438	1,367	3,992	485	4,257	310	2,665	10,212	25,316
Furnizuesi I Tregut të Lirë FTL (OSHEE Grup)	8,442	45,100	6,902	30,386	7,862	32,239	7,671	29,002	3,129	19,453	4,722	10,121	3,650	13,865	3,252	15,903	1,646	10,184	47,276	206,253
EZ-5 ENERGY	365	98	168	187	237	21	82	93	260	124	407	17	342	30	437	35	585	2	2,881	606
BYLLIS Tec Ballsh (Pa kontrate Furnizimi)	73		62		68		62	-	56	-	51	-	52	-	53	-	54	-	530	-
ENER TRADE sh.p.k.		3		72															-	75
KOSTT	6,990	6,725	6,884	4,750	4,179	6,915	1,391	11,620	4,924	7,620	4,215	6,507	4,552	5,008	5,209	6,385	7,304	3,071	45,649	58,601
OST - HUMBJET	7,477	826	7,581	409	1,015	4,124	10,082	-	7,027	33	594	4,087	2,481	468	2,884	1,109	636	1,949	39,779	13,005
Disbalancat mujore [MWh]	25,804		8,277		25,706		15,439		17,041		12,266		7,382		10,643		3,418		125,976	
Ofruesi i Sherbimit te Balancimit	Ulje Gjenerimi [MWh]	Rrrije Gjenerimi [MWh]	Ulje Gjenerimi [MWh]	Rrrije Gjenerimi [MWh]	Ulje Gjenerimi [MWh]	Rrrije Gjenerimi [MWh]	Ulje Gjenerimi [MWh]	Rrrije Gjenerimi [MWh]	Ulje Gjenerimi [MWh]	Rrrije Gjenerimi [MWh]	Ulje Gjenerimi [MWh]	Rrrije Gjenerimi [MWh]	Ulje Gjenerimi [MWh]	Rrrije Gjenerimi [MWh]	Ulje Gjenerimi [MWh]	Rrrije Gjenerimi [MWh]	Ulje Gjenerimi [MWh]	Rrrije Gjenerimi [MWh]	Ulje Gjenerimi [MWh]	Rrrije Gjenerimi [MWh]
KESH sh.a. OSHB	39,180	20,968	25,929	8,493	33,615	8,926	48,133	53,776	18,228	10,506	13,322	3,180	9,757	5,334	7,553	4,614	7,487	2,879	203,204	118,677
DEVOLL HP OSHB							401	85	1,851	1,464	73	49	92	-	150	293	198	70	2,764	1,961
AYEN AS ENERGJI OSHB								27	23	-	19	-	-	-	-	-	-	-	27	42
Energji Balancuese mujore [MWh]	(18,211)		(17,436)		(24,689)		5,327		(8,112)		(10,147)		(4,515)		(2,796)		(4,737)		(85,316)	

Regjistri Pjesmarresve te Tregut (viti 2021) 6-mujori		PRODHUES	P	
		TREGTUES	T	
		FURNIZUES	F	
		FURNIZUES I SHËRBIMIT UNIVERSAL	FSHU	
		SHPERNDARJE	SH	
Nr	Emri i Subjektit	EIC Code	data e regjistrimit	Roli ne TEE
1	Albanian Energy Supplier	54X-AEG-02-1603G	26.05.2015	T; F
2	AXPO Albania	23X--150330-AA-K	28.1.2020	T; F
3	Ayen AS Energji	23X--150416-A—N	17.12.2014	P; T; F
4	Ayen Energy Trading	23X--140426-AY-W	04.05.2014	T; F
6	Devoll Hydropower	23X--150409-DHP5	11.06.2015	T; F
8	Energji Ashta	54X-HECASHTA-059	25.05.2012	P
9	Energy Supply-AL	34X-0000000017-C	15.05.2013	T; F
11	GEN-I Tirana	23X---120709GEN0	31.01.2011	T; F
13	Green Energy Trading Albania	23X--150702GE--3	01.07.2015	T
14	Grupi Sistemeve Automatikë	22XGSA-----N	09.05.2011	T; F
15	Korporata Elektroenergjitike Shqiptare	23X--130918APC-M	25.04.2011	P; T
16	KURUM International	23X--131115KI--1	17.12.2013	P; T; F
17	NOA Energy Trade	23X--150630-NE-6	10.03.2015	T; F
18	Operatori i Sistemit të Shpërndarjes - OSSH sh.a.	54X-10101FT022OP	19.02.2020	SH
19	Stravaj Energy	54X-STRAVAJ-E086	25.04.2014	P; T
20	WENERG	54X-WENERG---10E	10.06.2015	P
22	Energy Market Albania	54X-ENMARKETAL99	23.03.2017	TF
23	Grid Energy	54X-GRID-ENERGYR	05.04.2017	T; F
24	Energy Financing Team Tirana	54X-EFT-TIRANA-V	24.08.2017	T; F
25	Alpiq Energy Albania	23X--141204AEA-T	29.04.2011	T; F
26	URADRIN	54X-100ID101218J	10.08.2018	F
27	Energia Gas and Power Albania shpk	23x-150309-LT-Y	22.10.2018	T; F
28	RENRGY Trading Group	54X-10IRN102618R	12.11.2018	T,F
29	Ener Trade shpk	54X-10 IET091118	21.12.2018	T; F
30	Power and Gas Operations	54X-10IPG2307196	23.07.2019	T
31	ENSCO Trading (Albania) sh.p.k	54X-110IESA1019G	02.12.2019	T
32	KESH sh.a	23X--130918APC-M	16.12.2019	F
33	Furnizuesi i Tregut të Lirë - FTL sh.a.	54X-1010IFT022OP	19.02.2020	T; F
34	Furnizuesi i Shërbimit Universal - FSHU sh.a.	54X-0101IFSH022Q	19.02.2020	F
35	EZ-5 Energy shpk	54X-11LKE250319U	25.03.2019	T;F
35	Hec Arsti shpk	54X-L-101H11A-IJ	27.03.2021	p
36	Hec Lengarica & Energy shpk	54X-L-1010H-LENU	09.07.2021	p

24	INFO Telecom sh.p.k.	Border	AL-GR Greece - OUT															0				
			AL-KS Kosovo - OUT																0			
			AL-ME Monte Negro - OUT																0			
			Total OUT	0	0	0	0	0	0	0	0	0	0	0	0	0	0	0	0	0		
			Blerje Ener Trade														-6	-18,160	-18,166			
		Shitje Ener Trade														5		5				
		Shitje FTL																1,840	1,840			
		Shitje TIRANA INTERNATIONAL DEVELOPMENT sh.a.(TID)														1	16,320	16,321				
		Total transakcione	0	0	0	0	0	0	0	0	0	0	0	0	0	0	0	0	0	0		
23	KESH sh.a.	Shkembime Cross-Border	AL-GR Greece - IN															0	0	0		
			AL-KS Kosovo - IN																0	0	-706	
			AL-ME Monte Negro - IN																-268	-500	0	-768
			Total IN	0	-706	0	0	0	0	0	0	-268	-500	0								-1,474
			AL-GR Greece - OUT	2,802	8,860	1,459	28,250	39,144	11,824								0	0				92,339
			AL-KS Kosovo - OUT	18,880	19,229	27,336	1,717	1,653	1,884								0	45				70,744
			AL-ME Monte Negro - OUT	0	18,376	26,467	33,509	35,200	14,242								2,100	240				130,134
			Total OUT	21,682	46,465	55,262	63,476	75,997	27,950	0	2,100	285	293,217									
			Shitje OST		20,440	11,145	12,750	15,965	18,395	14,485	12,946	9,008	115,134									
			Shitje Ayen Energy Trading	2,728	93	14,560	5,059	1,610	1,470			300	367									
		Shitje Danske Commodities	46,846	40,024	12,960	14,136	8,572	9,240	1,200													
		Shitje GEN-I	71,387	50,057	16,424	41,870	7,660		250			1,420										
		Shitje GSA	27,896	65,696	8,778	11,380	82,200	16,840	3,700	1,200												
		Shitje Ener Trade	25,680	17,466	28,438	28,820	44,834	11,620	500													
		Shitje NOA Energy	6,430	15,480		3,340	1,381	14,975	41,196	41,094												
		Shitje ReNRGY	14,983	41,916	13,384	270	5,880					120										
		Shitje AXPO			3,360	2,310																
		Blerje ENER TRADE														-200						
		Blerje Danske Commodities														-2,234	-1,358	-680				
		Blerje GSA														-510	-480					
		Blerje DEVOLL HP																				
		Blerje GEN-I														-2,100	-1,300	-1,460				
		Blerje NOA Energy														-8,605	-16,195	-28,952	-31,055	-30,209		
Blerje ReNRGY																						
Total transakcione	195,950	251,172	109,049	119,935	159,497	55,835	27,365	21,827	-21,434	919,196												

Shenime:

- Konsumatorët e kualifikuar për secilin subjekt ndryshojnë çdo muaj në varesi të kontratave të nënshkruara nga të dyja palët.
- Shenja (-) është përdorur për energjinë që hynë në rrjet (blerje + import) ndërsa shenja (+) për energjinë që del nga rrjeti (-).
- Çdo vlerë e sipërshtuar është e nominuar - me program (jo faktike me matje)

	AYEN ENERGY TRADING	27.09.2021 - 03.10.2021	07:00 - 23:00	1,344	185.35	249,110
	GSA SHPK	27.09.2021 - 03.10.2021	07:00 - 23:00	2,240	184.52	413,325
	TOTAL SHTATOR 2021			257,096	166,500	42,806,484
	GSA SHPK	04.10.2021 - 10.10.2021	00:00 - 24:00	11,760	229.25	2,695,980
	GEN-I TIRANA	04.10.2021 - 10.10.2021	00:00 - 24:00	2,520	223.50	563,220
	INFO-TELECOM	04.10.2021 - 10.10.2021	00:00 - 24:00	15,120	232.30	3,512,376
	DEVOLL HYDROPOWER SHA	04.10.2021 - 10.10.2021	00:00 - 24:00	3,360	200.55	673,848
	NOA	04.10.2021 - 10.10.2021	00:00 - 24:00	8,400	232.95	1,956,780
	FUTURE ENERGY TRADING&EXCHANGE DINAMICS	04.10.2021 - 10.10.2021	00:00 - 24:00	840	215.99	181,432
	GSA SHPK	04.10.2021 - 10.10.2021	07:00 - 23:00	112	259.25	29,036
	GEN-I TIRANA	04.10.2021 - 10.10.2021	07:00 - 23:00	5,040	248.50	1,252,440
	TIRANA INTERNATIONAL DEVELOPMENT	04.10.2021 - 10.10.2021	07:00 - 23:00	6,720	246.20	1,654,464
	INFO-TELECOM	04.10.2021 - 10.10.2021	07:00 - 23:00	112	255.00	28,560
	DEVOLL HYDROPOWER SHA	04.10.2021 - 10.10.2021	07:00 - 23:00	560	224.98	125,989
	RENGRY TRADING GROUP	04.10.2021 - 10.10.2021	07:00 - 23:00	560	256.63	143,713
	KOST - OST	04.10.2021 - 10.10.2021	07:00 - 23:00	112	259.99	29,119
	RENGRY TRADING GROUP	13.10.2021 - 17.10.2021	00:00 - 24:00	1,200	267.73	321,276
	INFO-TELECOM	13.10.2021 - 17.10.2021	00:00 - 24:00	3,600	270.00	972,000
	NOA	13.10.2021 - 17.10.2021	00:00 - 24:00	6,000	267.70	1,606,200
	GSA SHPK	13.10.2021 - 17.10.2021	00:00 - 24:00	8,400	239.16	2,008,944
	GEN-I TIRANA	13.10.2021 - 17.10.2021	00:00 - 24:00	120	270.00	32,400
	GSA SHPK	13.10.2021 - 17.10.2021	07:00 - 23:00	80	267.88	21,430
	EZ-5 ENERGY SHPK	14.10.2021 - 17.10.2021	00:00 - 24:00	3,648	264.71	963,662
	DEVOLL HYDROPOWER SHA	14.10.2021 - 17.10.2021	00:00 - 24:00	480	262.93	126,206
	GSA SHPK	18.10.2021 - 24.10.2021	00:00 - 24:00	160	247.85	39,656
	AYEN ENERGY TRADING	18.10.2021 - 24.10.2021	00:00 - 24:00	160	269.15	43,064
	FUTURE ENERGY TRADING&EXCHANGE DINAMICS	18.10.2021 - 24.10.2021	00:00 - 24:00	168	265.99	44,686
	KOST - OST	18.10.2021 - 24.10.2021	00:00 - 24:00	8,400	268.40	2,254,560
TETOR	DEVOLL HYDROPOWER SHA	18.10.2021 - 24.10.2021	00:00 - 24:00	840	267.75	224,910
	EZ-5 ENERGY SHPK	18.10.2021 - 24.10.2021	00:00 - 24:00	5,040	257.45	1,297,548
	NOA	18.10.2021 - 24.10.2021	00:00 - 24:00	6,720	268.92	1,807,142
	RENGRY TRADING GROUP	18.10.2021 - 24.10.2021	00:00 - 24:00	2,352	264.19	621,375
	GEN-I TIRANA	18.10.2021 - 24.10.2021	00:00 - 24:00	5,040	268.00	1,350,720
	GSA SHPK	18.10.2021 - 24.10.2021	07:00 - 23:00	9,520	316.25	3,010,700
	AYEN ENERGY TRADING	18.10.2021 - 24.10.2021	07:00 - 23:00	2,688	305.35	820,781
	KOST - OST	18.10.2021 - 24.10.2021	07:00 - 23:00	112	330.00	36,960
	INFO-TELECOM	18.10.2021 - 24.10.2021	07:00 - 23:00	3,360	328.20	1,102,752
	DEVOLL HYDROPOWER SHA	18.10.2021 - 24.10.2021	07:00 - 23:00	112	310.55	34,782
	EZ-5 ENERGY SHPK	18.10.2021 - 24.10.2021	07:00 - 23:00	112	325.00	36,400
	NOA	18.10.2021 - 24.10.2021	07:00 - 23:00	2,576	329.97	850,003
	RENGRY TRADING GROUP	18.10.2021 - 24.10.2021	07:00 - 23:00	1,680	309.19	519,439
	GEN-I TIRANA	18.10.2021 - 24.10.2021	07:00 - 23:00	112	320.00	35,840
	GSA SHPK	20.10.2021 - 24.10.2021	00:00 - 24:00	7,800	264.75	2,065,050
	DEVOLL HYDROPOWER SHA	20.10.2021 - 24.10.2021	00:00 - 24:00	600	259.85	155,910
	GSA SHPK	20.10.2021 - 24.10.2021	07:00 - 23:00	3,200	324.38	1,038,016
	TIRANA INTERNATIONAL DEVELOPMENT	20.10.2021 - 24.10.2021	07:00 - 23:00	4,000	327.20	1,308,800
	DEVOLL HYDROPOWER SHA	20.10.2021 - 24.10.2021	07:00 - 23:00	400	303.75	121,500
	INFO-TELECOM	25.10.2021 - 31.10.2021	00:00 - 24:00	11,088	286.80	3,180,038
	GEN-I TIRANA	25.10.2021 - 31.10.2021	00:00 - 24:00	4,200	284.69	1,195,698
	GSA SHPK	25.10.2021 - 31.10.2022	07:00 - 23:00	8,736	305	2,664,480
	NOA	25.10.2021 - 31.10.2021	00:00 - 24:00	8,400	288.97	2,427,348
	DEVOLL HYDROPOWER SHA	25.10.2021 - 31.10.2021	00:00 - 24:00	840	283.88	238,459
	GEN-I TIRANA	25.10.2021 - 31.10.2021	07:00 - 23:00	11,200	328.69	3,681,328
	DEVOLL HYDROPOWER SHA	25.10.2021 - 31.10.2021	07:00 - 23:00	560	329.26	184,386
	AYEN ENERGY TRADING	01.11.2021 - 31.12.2021	00:00 - 24:00	4,392	219.11	962,331
	TOTAL TETOR 2021			193,312	270,318	52,255,737
	AYEN ENERGY TRADING	01.11.2021 - 31.12.2021	00:00 - 24:00	4,392	219.11	962,331
	GSA SHPK	03.11.2021 - 09.11.2021	00:00 - 24:00	22,344	243.75	5,446,350
	NOA	03.11.2021 - 09.11.2021	00:00 - 24:00	17,976	237.70	4,272,895
	INFO-TELECOM	03.11.2021 - 09.11.2021	07:00 - 23:00	9,520	259.90	2,474,248
	NOA	03.11.2021 - 09.11.2021	07:00 - 23:00	112	266.90	29,893
	INFO-TELECOM	03.11.2021 - 09.11.2021	07:00 - 23:00	9,408	258.50	2,431,968
	TIRANA INTERNATIONAL DEVELOPMENT	03.11.2021 - 09.11.2021	07:00 - 23:00	11,200	257.70	2,886,240
	GSA SHPK	10.11.2021 - 16.11.2021	00:00 - 24:00	14,616	245.75	3,591,882
NENTOR	INFO-TELECOM	10.11.2021 - 16.11.2021	00:00 - 24:00	16,800	245.80	4,129,440
	AYEN ENERGY TRADING	10.11.2021 - 16.11.2021	00:00 - 24:00	7,560	241.07	1,822,489
	EZ-5 ENERGY SHPK	10.11.2021 - 16.11.2021	00:00 - 24:00	1,848	247.00	456,456
	RENGRY TRADING GROUP	10.11.2021 - 16.11.2021	00:00 - 24:00	1,176	238.88	280,923
	DEVOLL HYDROPOWER SHA	10.11.2021 - 16.11.2021	07:00 - 23:00	1,680	271.40	455,952
	AYEN ENERGY TRADING	10.11.2021 - 16.11.2021	07:00 - 23:00	112	265.18	29,700
	RENGRY TRADING GROUP	10.11.2021 - 16.11.2021	07:00 - 23:00	1,344	274.74	369,251
	GSA SHPK	10.11.2021 - 16.11.2022	07:00 - 23:01	10,640	284	3,021,760
	TIRANA INTERNATIONAL DEVELOPMENT	10.11.2021 - 16.11.2023	07:00 - 23:02	17,584	284.3	4,999,131
	NOA	10.11.2021 - 16.11.2024	07:00 - 23:03	3,360	284.25	955,080
	AYEN ENERGY TRADING	10.11.2021 - 16.11.2025	07:00 - 23:04	2,240	283.7	635,488
						-
	TOTAL NENTOR 2021			149,520	256,080	38,289,146

Blerjet e OST sh.a të energjisë elektrike në tregun e hapur për vitin 2021							
OST sh.a.							
Muaji	Kompanitë fituese	Periudha	Intervali i lëvrimit	Sasia (MWh)	Çmimi Euro/MWh	Vlera pa TVSH (Euro)	
JANAR-NENTOR 2021	DANSKE COMMODITIES ALBANIA SH.P.K	01.01.2021 - 31.01.2021	Band	4,464	71.73	320,202.72	
	DEVOLL HYDROPOWER SHA	01.01.2021 - 31.01.2021	Band	5,208	71.84	374,142.72	
	GSA SH.P.K	01.01.2021 - 10.01.2021	Orar	2,500	78.72	196,800.00	
	AYEN ENERGY TRADING SHA	11.01.2021 - 17.01.2021	Orar	1,421	60.03	85,302.63	
	ENER TRADE SH.P.K	18.01.2021 - 24.01.2021	Orar	3,087	61.07	188,523.09	
	DANSKE COMMODITIES ALBANIA SH.P.K	25.01.2021 - 31.01.2021	Orar	3,143	56.29	176,919.47	
	KESH SHA	01.02.2021 - 30.09.2021	Band	73,905	74.59	5,512,573.95	
	KESH SHA	01.02.2021 - 28.02.2021	Orar	10,360	38.82	402,175.20	
	DANSKE COMMODITIES ALBANIA sh.p.k.	01.03.2021 - 31.03.2021	Orar	11,935	53.92	643,535.20	
	KESH SHA	01.04.2021 - 30.04.2021	Orar	3,390	47.41	160,719.90	
	KESH SHA	01.05.2021 - 31.05.2021	Orar	6,293	54.10	340,451.30	
	KESH SHA	01.06.2021 - 13.06.2021	Orar	5,499	59.20	325,540.80	
	KESH SHA	14.06.2021 - 30.06.2021	Orar	3,536	57.20	202,259.20	
	KESH SHA	01.07.2021 - 18.07.2021	Orar	3,168	86.64	274,476	
	KESH SHA	19.07.2021 - 31.07.2021	Orar	3,133	89.73	281,124.09	
	GSA SH.P.K	01.08.2021 - 08.08.2021	Orar	1,768	122.40	216,403.20	
	KESH SHA	13.08.2021 - 19.08.2021	Orar	1,792	119.45	214,054.40	
	KESH SHA	20.08.2021 - 29.08.2021	Orar	2,970	119.00	353,430.00	
	GSA SH.P.K	06.09.2021 - 12.09.2021	Orar	1,652	144.38	238,515.76	
	DEVOLL HYDROPOWER SHA	13.09.2021 - 19.09.2021	Orar	868	145.00	125,860.00	
	GEN-I TIRANA SH.P.K	01.10.2021 - 31.10.2021	Band	8,195	155.45	1,273,912.75	
	KESH SHA	01.10.2021 - 07.10.2021	Orar	917	153.20	140,484.40	
	KESH SHA	08.10.2021 - 17.10.2021	Orar	1,000	231.48	231,480.00	
	AYEN ENERGY TRADING SHA	29.10.2021 - 07.11.2021	Orar	819	269.22	220,491.18	
	KESH SHA	01.11.2021 - 30.11.2021	Band	8,640	191.70	1,656,288	
	ENER TRADE SH.P.K	08.11.2021 - 14.11.2021	Orar	539	245.20	132,163	
						-	
						-	
						-	
		TOTALI 2021			170,202	73.44	12,499,377.48