

BILANCI ENERGJITIK 2024 (MWh)

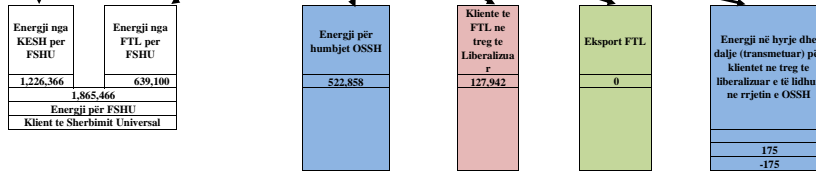
Prodhimi neto publik	
Prodhimi Neto KESH sha	
1,439,623	
Blerje KESH ne treg te liberalizuar	0
Prodhim+Blerje	1,439,623
Shkembime (hyrje) KEK	
Shkembime (dalje) KEK	213,257
Energji shterbime ndihmese+disbal	
Energji per FSHU nga KESH sha	1,226,366

Prodhuar nga PPE ne rrjetin e OSSH			Prodhuar nga PPE ne rrjetin e OST		Prodhues te pavarur						
HEC Selfe	HEC Priv/Kon ne Rrjetin e OSSH per FTL	Fotovoltaik (tote FTL)	HEC Priv/Kon ne Rrjetin e OST per FTL	HEC Ashta	HEC Banga	HEC Mogleka	HEC KURUM	HEC Peshqesh	HEC Fanga	HEC Qumi	Fotovoltaik (ne treg te Bre)
7,621	465,380	19,580	502,820	88,382	81,063	162,158	158,968	52,140	108,912	2,053	12,818

Prodhim neto vendas	3,101,518
---------------------	-----------

Energji e siguruar nga FTL					
Blerje Neto (Seli)	Blerje HC.Priv/Kon ne Rrjetin e OSSH per FTL	Blerje FOTOVO L.TAIK	Blerje HC.Priv/Kon ne Rrjetin e OST per FTL	Blerje Neto Ashta	Blerje ne Treg te Liberalizuar nga FTL
7,621	465,380	19,580	502,820	88,382	206,292
					1,290,075

Balanca ne interkoneksion (dhenie)	311,339
------------------------------------	---------



KONSUMI I ENERGJISE NE SHQIPERI	2,790,170
---------------------------------	-----------

2,790,170

Burimi: OST sha; KESH sha; OSSH sha; FSHU sha; FTL sha; (OSHEE Group sha)

TABELA ME TE DHENA PERIODIKE (MUJORE) TE OSHEE Group Sh.a 2024		Janar	Shkurt	Mars	Prill	Progresive	
A	Energji Totale e Hyrë në OSSH Sh.a (MWh)						
A.1	Energji e transmetuar nepërmjet OST per logari te OSSH Sh.a	A-A.1+A.1.A.1.2 A.1-Sum(A.1.1,A.1.3)	759,550	644,990	618,777	515,155	2,538,472
A.1.1	Nga KESH -Gjen nepërmjet OST		614,882	552,439	478,969	392,831	2,039,121
A.1.2	Nga OST si import i OSHEE Group Sh.a (Energji e blerë në ALPEX për FSHU)		379,224	386,578	271,570	188,993	1,226,366
A.1.3	Energji e transmetuar per klientët 35KV (te dat ne treg te parrgulluar furnizues te tjere)		52,061	52,980	53,208	48,313	206,562
A.1.4	Nga OST per logari te klienteve te OSSHSh.a prodhuar nga HEC-et ne rrjetin e transmetimit		740	3,150	6,363	8,742	18,994
A.1.5	Nga TEC VLORA nepërmjet OST		182,836	110,021	147,827	146,784	587,468
A.1.6	Nga Bionica 1,2 nepërmjet OST		n/a	n/a	n/a	n/a	n/a
A.1.7	Export OSHEE Group Sh.a		n/a	n/a	n/a	n/a	n/a
A.2	Energji elektrike e injektuar ne OST nga Hec-et Lokale	A.2	73,759	35,851	73,148	67,149	249,907
A.3	Energji e transmetuar direkt ne rrjetin e OSSH Sh.a	A.3-Sum(A.3.1,A.3.3)	144,668	92,551	139,808	122,323	499,351
A.3.1	HEC Ulez-Lanabregas		2,114	1,880	1,799	1,828	7,621
A.3.2	Impjantet Privat/ine Koncesion		138,715	85,036	128,626	113,003	465,380
A.3.3	Burimet e Rinovueshme Fotovoltaik (BRE)		3,840	5,635	9,384	7,493	26,351
A.3.4	Prodhim i injektuar ne OSSH nga BRE-t ne Treg te Parrgulluar		993	1,326	1,666	1,974	5,959
B	Energji Totale ne Rrjetin e Shpërndarjes (MWh)	B-A.1+A.1.A.2	833,309	680,841	691,925	582,304	2,788,379
C	Humbjet Totale ne Rrjetin e Shpërndarjes (MWh)	C-1+C.2+C.3	177,293	114,411	134,062	97,092	522,858
C.1	Humbje Teknike njesite e TL (MWh)		10,755	7,774	9,897	7,090	35,515
C.2	Humbje Teknike ne Zona (MWh)		113,233	78,712	85,639	61,759	339,343
C.3	Humbje joTeknike ne Zona (MWh)		53,306	27,926	38,526	28,243	148,000
C.1	Humbjet Totale ne OSHEE Sh.a (%)	C1+C2	21.28%	16.80%	19.38%	16.67%	18.75%
C.1.1	Humbje Teknike njesite e TL (%)		1.29%	1.14%	1.43%	1.22%	1.27%
C.2.1	Humbje Teknike ne Zona (%)		13.77%	11.70%	12.56%	10.74%	12.33%
C.3.1	Humbje joTeknike ne Zona (%)		6.40%	4.10%	5.57%	4.85%	5.31%
D	Energjia e përdorur në Rrjetin e Shpërndarjes	D=B-C (1.0.1)	616,617	532,160	526,941	460,749	2,136,486
D.1	Shitur Klienteve FMF (MWh)	D.1=0.1+0.1.2	51,042	47,867	49,561	41,162	189,632
D.1.1	Shitur Klienteve FMF Privat (MWh)		115	26	18	16	175
D.1.2	Shitur Klienteve FMF Jobuxhetore(MWh)		1,403	1,356	1,488	1,480	5,727
D.1.3	Shitur Klienteve FMF 20/10/6 (Mwh)		49,525	46,485	48,055	39,666	183,731
D.2	Shitur Klienteve Private (MWh)	D.2=D.2.1+0.2.2+0.2.3	106,813	98,258	92,647	86,275	383,993
D.2.1	Shitur nga rrjeti i Transmetimit per logari te OSSH Sh.a		695	600	553	403	2,251
D.2.2	Shitur per nevoja te veta te OSHEE Group Sh.a		106,119	97,658	92,094	85,872	381,741
D.2.3	Shitur Klienteve Private (pa ate per nevoja te veta dhe Ne TL)		3,438	3,258	3,043	2,425	12,164
D.3	Shitur Klienteve Jobuxhetore (MWh)		17,017	15,936	14,282	10,560	57,796
D.4	Shitur Klienteve Bushetore (MWh)		363,827	327,840	287,897	244,436	1,224,001
D.5	Shitur Klienteve Familjare (MWh)	D.5=0.5.1+0.5.2	355,015	319,413	279,590	236,306	1,190,325
D.5.1	Shitur Klienteve Familjare (MWh)		8,812	8,427	8,307	8,130	33,676
D.5.2	Shitur Klienteve Familjare per Ambientet e Përbashketa		73,759	35,851	73,148	67,149	249,907
D.6	Energji elektrike e injektuar ne OST nga Hec-et Lokale	D.6=A.2	740	3,150	6,363	8,742	18,994
D.7	Energji elektrike e perdorur nga klientet ne treg te parrgulluar	D.7	7,882,027	7,374,630	6,650,006	6,078,325	28,084,989
E	Faturuar muaji Parafundit (000/leke)	E=F.1+F.2+F.3+F.4	7,345,687	7,006,722	6,727,401	6,340,048	27,418,858
F.1	Arketuar per faturat korrente te vitit aktual		4,814	4,919,897	4,386,674	4,022,924	13,373,308
F.2	Arketuar per faturat e tjera te vitit aktual		7,300,873	2,086,825	1,482,156	1,768,307	3,250,463
F.3	Arketuar per faturat e tjera te viteve te kaluara		92,006	95,006	101,276	104,336	371,621
F.4	Arketuar per faturat e tjera te viteve te kaluara		0.0%	0.0%	22.3%	29.1%	11.6%
F.1	Arketimet e muajit aktual (%)	F.1+F.2	92.0%	95.0%	101.2%	104.3%	97.6%
F.1.1	Arketuar per faturat korrente te vitit aktual (%)	F.1.1=F.1/E	0.5%	66.7%	66.0%	66.2%	47.6%
F.1.2	Arketuar per faturat e tjera te vitit aktual (%)	F.1.2=F.2/E	0.0%	0.0%	22.3%	29.1%	11.6%
F.1.3	Arketuar per faturat e tjera te viteve te kaluara (%)	F.1.3=F.3/E	0.0%	0.0%	22.3%	29.1%	11.6%
F.1.4	Arketuar per faturat e tjera te viteve te kaluara (%)	F.1.4=F.4/E	0.0%	0.0%	22.3%	29.1%	11.6%
G	Faturuar muaji Raportues (000/leke)		7,374,630	6,650,006	6,078,325	5,298,049	25,401,010
1	Nr. Konsumatoreve gjithesej (Nr.)		1,324,441	1,327,372	1,330,088	1,333,496	1,333,496
2	Fatura te emetuara me lexim konsumi (Nr.)		1,027,226	1,025,143	1,036,467	1,035,495	4,124,331
3	Sasia e energjise se faturuar me lexim konsumi (MWh)		299,881	301,375	297,510	305,942	1,204,708
4	Fatura te emetuara me lexim "0" (Nr.)		-	-	-	-	-
5	Nr.Faturave te emetuara pa lexim (energji e pa matur) (Nr.)		-	-	-	-	-
6	Sasia e energjise se faturuar si energji e pamatur (MWh)		-	-	-	-	-
7	Nr.Faturave te emetuara pa lexim (dem ekonomik) (Nr.)		101	61	52	26	240
8	Sasia e faturuar si dem ekonomik (MWh)		438	300	213	129	1,080
9	Nr.Faturave per te cilat eshte arketuar kamat vonese (Nr.)		374,497	322,031	360,283	375,842	1,432,653
10	Vlera e Kamat vonesave te arketuara (000/leke)		76,046	64,886	72,300	84,802	298,034

Burimi: OSSH sha; FSHU sha; FTL sha;

BILANCI OSSH, FSHU,FTL sha 2024 (4-mujori)		
1	ENERGJI TOTALE E HYRE NE RRJETIN E OSSH-se	2,538,472
2	Energji e shitur nga KESH sha per FSHU sha	1,226,366
3	ENERGJI NE HYRJE E BLERE NGA FTL (OSHEE sha)	1,290,075
3.1	Blere nga Prodhimi i PPE në rrjetin e OSSH	492,580
3.2	Blere nga Prodhimi i PPE në rrjetin e OST	591,203
3.3	Blere ne Treg të Liberalizuar nga FTL sha	206,292
4	ENERGJI NE DALJE NGA FTL (OSHEE sha)	1,290,075
4.1	Energji nga FTL per FSHU	639,100
4.2	Energji nga FTL për humbjet OSSH	522,858
4.3	Energji e shitur nga FTL ne treg te liberalizuar	127,942
4.4	Eksport i FTL	-
4.5	Energji vetem per tu transmetuar tek klientet ne treg te liberalizuar (ne rrjetin e OSSH)	175
7	ENERGJI QE KALON NE RRJETIN E OSSH-se	2,788,379
7.1	Energji totale e transmetuar nga OST ne rrjetin e Shpërndarjes	2,282,981
7.2	Energji e transmetuar direkt ne rrjetin e Shpërndarjes nga impiantet e lidhur ne rrjetin e Shpërn	180,298
7.3	Energjia e ngitur ne rrjetin e transmetimit nga centralet e lidhura ne rrjetin e OSSH	249,907
8	Humbje totale ne rrjetin e OSSH-se (%)	18.75

Burimi: OSSH sha; FSHU sha; FTL sha;

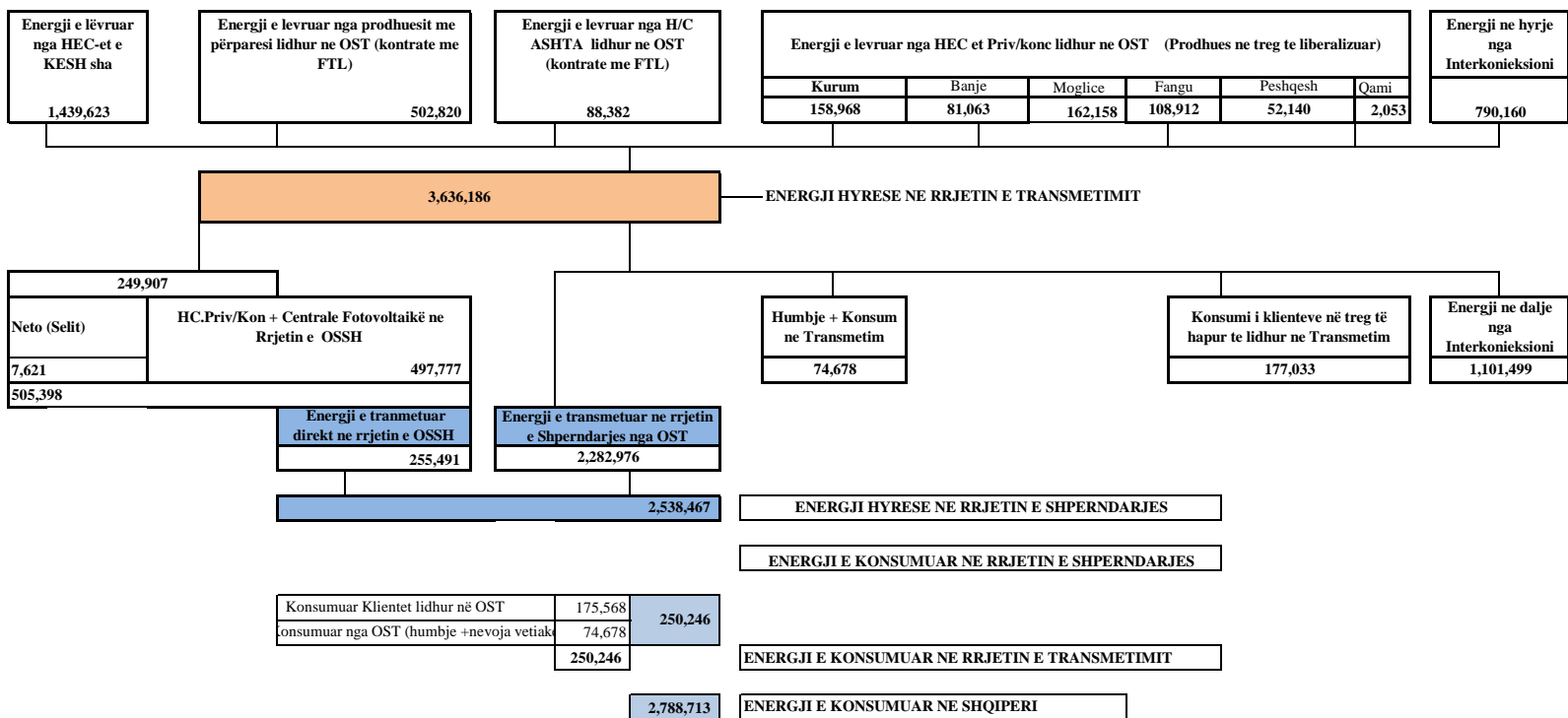
	Janar	Shkurt	Mars	Prill	2024		
HYRJE	Dhene nga H/C e KESH ne rrjetin e Transmetimit	461,940	434,525	312,293	230,865	1,439,623	3,636,189
	Dhene nga H/C e me perparesi ne rrjetin e Transmetimit (+Qami)	153,707	36,130	130,461	134,220	454,518	
	Energji nga Hec-et Lokale levruar ne Rrjetin e Transmetimit (me ngritje)	73,759	86,207	73,148	67,149	300,263	
	Gjenerim KURUM (prodhues i pavarur)	47,623	36,678	34,155	40,512	158,968	
	HEC ASHTA (prodhues i pavarur Kontr.me OSHEE)	29,506	23,646	19,871	15,359	88,382	
	HEC BANJE (prodhues i pavarur)	25,295	20,166	19,747	15,855	81,063	
	HEC MOGLICE (prodhues i pavarur)	55,232	39,392	42,314	25,222	162,160	
	HEC PESHQESH-T1/637 (prodhues i pavarur)	17,478	8,763	13,692	12,207	52,140	
	HEC FANGU (prodhues i pavarur)	45,494	23,264	15,108	25,046	108,912	
Importi(Hyre) nga Linjat e Interkonjeksionit	133,112	187,286	214,751	255,012	790,161		
DALJE	Humbjet ne Transmetim	22,608	17,520	17,149	17,399	74,676	3,636,189
	Transmetuar ne Rrjetin e Shperndarjes	687,647	586,964	550,408	457,962	2,282,981	
	Klientene treg te hapur (TL)	36,554	31,249	50,416	58,814	177,033	
	Eksporti (Dale) nga Linjat e Interkonjeksionit	296,337	260,325	257,566	287,271	1,101,499	
Humbjet ne Transmetim	22,608	17,520	17,149	17,399	74,676		
Humbjet ne Transmetim ne %	2.17	1.96	1.96	2.12	2.05		

Burimi:OST sha

OST sha	Njësia e Matjes	Janar	Shkurt	Mars	Prill	Shuma 2024 [MWh]
	MWh					
Prodhimi nga KESH_GEN në Rrjetin e Transmetimit	1	461,940	434,525	312,293	230,865	1,439,623
Prodhimi nga HEC/HPP e vogla në Rrjetin e Transmetimit	2	73,759	35,851	73,148	67,149	249,907
Prodhimi nga PPE/IPP e mëdha në Rrjetin e Transmetimit	3	153,707	86,486	130,461	134,220	504,875
Prodhimi nga HEC Peshqesh	4	17,478	8,763	13,692	12,207	52,140
Prodhimi nga HEC Banja	5	25,295	20,166	19,747	15,855	81,063
Prodhimi nga HEC FANG	6	45,494	23,264	15,108	25,046	108,912
Prodhimi nga HEC Moglicë	7	55,232	39,392	42,313	25,222	162,158
Prodhimi nga HEC Ashta	8	29,506	23,646	19,871	15,359	88,382
Prodhimi nga KURUM (Ulez-Shkopet&Bistrical,2)	9	47,623	36,678	34,155	40,512	158,968
Eksporti (-) nga Linjat e Interkonjeksionit	D	296,337	260,325	257,566	287,271	1,101,499
Importi (+) nga Linjat e Interkonjeksionit	R	133,112	187,286	214,751	255,012	790,160
Balanca (Total Interkonjeksioni)	11=(R-D)	163,225	73,039	42,815	32,259	311,339
Energjia Totale në Marrje	12=(1+2+3+4+5+6+7+8+9+10+R)	1,043,146	896,058	875,539	821,446	3,636,188
Humbjet në Rrjetin e Transmetimit (përfshirë Nevojat V)	13	22,608	17,520	17,149	17,399	74,676
Humbjet në Rrjetin e Transmetimit %	14=13/12	2.17	1.96	1.96	2.12	2.05
Energjia Totale në Dhënie	15=(12-13)	1,020,538	878,538	858,390	804,047	3,561,513
Transmetuar në Linjat e Interkonjeksionit	16=D	296,337	260,325	257,566	287,271	1,101,499
Transmetuar tek Klientët e Kualifikuar		36,554	31,249	50,416	58,814	177,033
EL220-L220KURUM/337		4,874.2	4,501	23,996	24,673	58,045
F.ARRES-T3/653					1,464	1,464
Titan T1,T2		9,587.6	9,037	4,561	8,997	32,183
FUSHE KRUJE 220kV-T2/058		5,383.0	707	2,988	9,172	18,251
N/ST 220/6,3Colacent-T1/336		145.3	1,023	1,734	1,746	4,648
N/ST i GSA EL 110kV-T1/694		8,955.8	8,466	8,959	2,772	29,153
N/ST i GSA EL 110kV-T2/960		-	-	-	-	-
N/ST i CWI Albania T1/148		466.1	395	531	416.79	1,809
N/ST i AES EL 110kV-T1/690		158.5	22	-	2,414	2,595
N/ST i AES EL 110kV-T2/692		-	118	147	60	325
HEC Moglice T1,T2,T3	1.4		1	1	1	4
HEC Peshqesh-T1/633	0.9		9	5	4.99	20
Lqithiza T1/742	14.4		22	17	26.34	80
HEC Ashta1-T1,HEC Ashta2-T1,	-		-	0.11	0.00	0
HEC Banje T1,T2	10.8		12	20	19.25	62
HEC Fang-T1,T2,	1.300		35	48	24.5	108
Gjenerim KURUM	1.296		5	16	8.59	30
FERRO KROM-F1,F2,F3,F4	6,952.9		6,896	7,392	7,013	28,254
Transmetuar në rrjetin e Shpërndarjes	687,647		586,964	550,408	457,962	2,282,981
Transmetuar në rrjetin e Shpërndarjes 110 kV	599,909		512,591	482,164	400,726	1,995,390
Transmetuar në rrjetin e Shpërndarjes 35 kV	43,519		36,186	33,063	29,398	142,166
Transmetuar në rrjetin e Shpërndarjes 6, 10, 20 kV	44,219		38,186	35,181	27,838	145,424

Burimi:OST sha

PARAQITJA SKEMATIKE E FLUKSEVE TE ENERGIJISE NE SISTEMIN ELEKTRO-ENERGJITIK SHQIPETAR VITI 2024 (MWh)



LEGJENDA	
FSHU	FURNIZUES I SHËRBIMIT UNIVERSAL
FMF	FURNIZUES I MUNDËSISË SË FUNDIT

Burimi: OST sha; KESH sha; OSSH sha; FSHU sha; FTL sha; (OSHEE Group sha)

PRODHIMI GJATE VITIT 2024 NGA CENTRALET E LIDHURA NE RRJETIN E TRANSMETIMIT (MWh)

CENTRALI PRODHUES	MW	SUBJEKTI	LIDHJA	JANAR	SHKURT	MARS	PRILL	4- MUJORI
HEC "Fierze"	500.000	"KESH" sha	220 kV	461,940	434,525	312,293	230,865	1,439,623
HEC "Koman"	600.000		220 kV					
HEC "V. Dejes"	250.000		220 kV					
Tec Vlora	98.000		220 kV					
	1,448.000							1,439,623
HEC "Ulez"	25.200	"Kurum International" sh.a.	110 kV	47,623	36,678	34,155	40,512	158,968
HEC "Shkopet"	24.000		110 kV					
HEC "Bistrica 1"	22.500		110 kV					
HEC "Bistrica 2"	5.000		110 kV					
HEC "Peshqesh"	28.000	"Ayen As Energji" sha	220 kV	17,478	8,763	13,692	12,207	52,140
HEC "Fangu"	74.600		220 kV	45,494	23,264	15,108	25,046	108,912
HEC "Banje"	73.000	"Devoll Hydropower" sha	110 kV	25,295	20,166	19,747	15,855	81,063
HEC "Moglice"	184.000	"Devoll Hydropower" sha	111 kV	55,232	39,392	42,313	25,222	162,159
HEC Qami-1	1.730	"Lajthiza Invest" shpk		628	280	624	521	2,053
	438.030							565,295
HEC "Ashta"	48.200	"Energji Ashta" shpk	110 kV	29,506	23,646	19,871	15,359	88,382
								88,382
HEC "Bishnica 2"	2.500	"HEC Bishnica 1,2" shpk	110 kV	1,581	919	1,125	1,300	4,925
HEC "Dardhe"	5.800	"Wenerg" shpk	110 kV	3,385	1,447	1,647	1,354	7,833
HEC "Truen"	2.500	"TRUEN" shpk	110 kV					
HEC "Ternove"	8.385	"TEODORI 2003" shpk	110 kV	1,341	1,141	799	879	4,160
HEC "Gjorice"	29.610	"DITEKO" shpk	110 kV	18,029	13,381	14,589	13,243	59,242
HEC "Sllabinje 2C"	3.400	"Hidropower Elektrik" shpk	110 kV	1,270	811	1,654	1,855	5,590
HEC "Sllabinje 2D"	4.885		110kV	1,384	693	1,232	1,361	4,670
HEC "Sllabinje 2E"	3.800		110 kV	2,007	1,008	1,631	1,774	6,419
HEC "Sllabinje"	13.800	"Power-Elektrik-Sllabinje" shpk	110 kV	5,506	3,234	4,359	4,329	17,429
HEC "Bele 1"	5.000	"Euron Energy" shpk	110 kV	18,863	12,851	16,084	19,841	67,639
HEC "Topojan 2"	5.800							
HEC "Bele 2"	11.000							
HEC "Topojan 1"	2.900							
HEC "Orgjost I RI"	4.800	"Energal" shpk						
HEC "Cerruje-1"	2.300	"Energy partners AI" shpk	110 kV	2,734	724	2,160	2,618	8,236
HEC "Cerruje-2"	2.800							
HEC "Rrupe"	3.600							
HEC "Rapunj 1,2"	8.100	"C & S Construction Energy" shpk	110 kV	5,256	3,406	4,759	4,862	18,283
HEC "Rrapunj 3,4"	8.850	"C & S Energy" shpk	110 kV	4,942	2,854	4,146	3,709	15,651
HEC "Llapaj"	13.620	"Gjo-Spa POWER" shpk	110 kV	5,765	3,130	5,921	7,795	22,610
HEC "Lengarice"	8.940	"Lengarica & Energy" shpk	110 kV	4,656	2,928	5,400	2,493	15,478
HEC "Lura 1"	6.540	"Erdat Lura" shpk	110 kV	7,173	2,988	5,752	5,104	21,017
HEC "Lura 2"	4.020		110 kV					
HEC "Lura 3"	5.660		110 kV					
HEC "Malla"	5.455	"Gjurr Rec" shpk	110 kV	2,270	1,077	1,933	1,637	6,917
HEC "Prela"	14.970	"Prele Energji"	110 kV	6,318	1,592	5,767	4,789	18,466
HEC "Cemerica 1"	0.88	"REJ ENERGY" shpk	110 kV	2,316	1,621	2,315	1,672	7,924
HEC "Cemerica 2"	1.08		110 kV					
HEC "Cemerica 3"	2.1		110 kV					
HEC "TUÇ"	4.47	MC Inerte Lumzi	110 kV	5,612	2,148	3,408	3,031	14,199
HEC "Lumzi"	11		110 kV					
HEC "Denas"	14.5	"Denas Power" shpk	110 kV	5,909	3,688	5,714	3,915	19,225
Llënga "1"	1.73	"HEC LLËNGË" sh.p.k	110 kV	1,627	940	1,616	1,493	5,676
Llënga 2	0.3		110 kV					
Llënga 3	1.5		110 kV					
HEC Shpella Poshte 2	2.3	Liria Energji shpk	110 kV	1,906	869	1,209	1,405	5,388
HEC Germani 1	4.8	SA'GA-MAT shpk	110 kV	2,124	855	1,362	1,376	5,717
HEC Germani 2	1.5		110 kV					
HEC Lashkiza 1	4.076	HEC Lashkiza shpk	110 kV	1,160	615	836	742	3,353
HEC Lashkiza 2	0.882		110 kV					
HEC Seta 1+2	7.454	"Hydro Seta" sh.p.k	110 kV	6,362	3,220	4,733	4,519	18,833
HEC Seta 3	2.722		110 kV					
HEC Seta 4	4.724		110 kV					
HEC Darsi 1,2	14.963	Henz Energy shpk	110 kV	7,202	2,769	3,731	4,448	18,150
HEC Egnatia	5	REMI shpk	110 kV	1,937	879	1,283	1,119	5,219
HEC Seka & Zais/684	14.96	SEKA Hydropower shpk	110 kV	9,701	5,365	9,523	8,768	33,358
HEC ARSTI	3.13	Hec Arsti shpk	110 kV	2,440	1,467	1,887	1,444	7,237
HEC KASKADA GJADER TI/344	24.9	S.P.E. Gjader shpk	110 kV	4,574	1,603	4,112	3,791	14,080
HEC-et Dragobia&Ceremi/686	21.9	Dragobia Energy shpk	110 kV	5,672	4,781	7,029	9,657	27,139
HEC Veleshica 1,2	13.9	"Kalisi Hydropower" shpk	110 kV	2,059	1,204	2,121	7,375	12,759
	353.806			153,079	86,206	129,836	133,699	502,820

TE VITIT 2023 NGA CENTRALET E LIDHURA NE RRJETIN E SHPERNDARJES (MWh)

HECET DHE KAPACITETI	MW	SUBJEKTI	LIDHJA	JANAR	SHKURT	MARS	PRILL	4- MUJORI
HEC "Lanabregas"	5.000	"Hec Lanabregas" sha	35kV	2,114	1,880	1,799	1,828	7,621
HEC "Lenie"	0.400	"EMIKEL 2003" sh.p.k	10kV	280	263	281	263	1,087
HEC "Corovode"	0.200		10kV	107	92	117	105	421
HEC "Smokthine"	9.200	"Albanian Green Energy" sh.p.k	35 kV	3,740	2,643	3,498	3,093	12,973
HEC "Bulqize"	0.600	"Balkan Green Energy" shpk	10kV	146	90	115	142	494
HEC "Homesh"	0.395		10kV	68	50	53	51	222
HEC "Zerqan"	0.625		6kV	145	151	170	159	625
HEC "Arras"	4.800		20kV	2,524	2,427	2,296	2,277	9,525
HEC "Orgjost"	1.200		10kV	735	664	674	725	2,798
HEC "Lekbibaj"	1.400		10kV	482	770	794	755	2,801
HEC "Dukagjin"	0.640		10kV	160	154	179	226	720
HEC "Marjan"	0.200		10kV	0	0	0	0	0
HEC "Lozhan"	0.100		10kV	72	57	74	56	260
HEC "Barmash"	0.830		10kV	216	157	232	121	725
HEC "Treske 2"	0.250		10kV	117	99	120	98	434

HEC "Nikolice"	0.700		10kV	270	215	274	221	979
HEC "Funares"	1.920		10kV	856	857	905	858	3,477
HEC "Lunik"	0.200		10kV	143	143	140	132	558
HEC "Kerpice"	0.420		6kV	31	69	63	69	232
HEC "Ujanik"	0.630		10kV	175	148	149	131	604
HEC "Borsh"	0.250		6kV	86	118	114	91	409
HEC "Leshnice"	0.380		10/6kv	74	65	118	67	325
HEC "Velcan"	1.200		10kV	528	253	504	479	1,764
HEC "Muhur"	0.250		6kV	71	65	58	74	268
HEC "Rajan"	1.020		10kV	406	307	480	218	1,412
HEC "Lure"	0.750		10kV	51	147	162	114	473
HEC "Gjanç"	3.700	"Spahiu Gjanç" sh.p.k.	35 kV	0	0	0	0	0
HEC "Bogove"	2.500	"Wonder power" sha	35 kV	1,225	558	1,347	1,054	4,184
HEC "Xhyre"	0.570	"Amal" sh.p.k	10kV	232	206	212	195	845
HEC "Stranik"	4.600	"Hidro Invest 1" shpk	35kV	2,367	1,427	1,630	1,361	6,786
HEC "Zall Tore"	3.000		35kV	1,914	1,257	1,326	1,122	5,618
HEC "Klos"	1.950	"Malido-Energji" shpk	6kV	628	321	349	318	1,617
HEC "Borje-Oreshke"	1.500	"HIDROALBANIA Energji" shpk	35kV	2,650	1,840	2,585	3,334	10,408
HEC "Cernaleve"	2.950		35kV	1,134	769	1,101	1,429	4,433
HEC "Cernaleve 1"	3.270		35kV	1,284	860	1,194	1,585	4,923
HEC "Murdhari 1"	2.680	"HydroEnergy" shpk	10kV	1,510	545	1,242	741	4,037
HEC "Murdhari 2"	1.000		10kV	974	364	795	449	2,582
HEC "Dishnice"	0.200	"Dishnica Energji" shpk	10kV	46	48	92	67	253
HEC "Lubonje"	0.300	"Elektro Lubonja" shpk	10kV	146	81	119	61	406
HEC "Peshk"	3.430	"Koka & Ergi Energy Peshk" shpk	35kV	1,861	1,140	1,887	1,482	6,369
HEC "Labinot -Mal"	0.250	"Ansara Koncension" shpk	6kV	43	39	36	38	156
HEC "Pobreg"	12.300	"Energy Plus" shpk	35kV	6,461	3,431	5,312	6,787	21,991
HEC "Vlushe"	14.200	"Hec Vlushe" shpk	35kV	6,263	2,958	7,200	4,821	21,243
HEC "Belesova 1"	0.150	"Korkis 2009" shpk	6kV	0	0	0	0	0
HEC "Faqekuq 1,2"	6.400	"HP OSTROVICA ENERGY" shpk	35kV	2,064	1,222	2,084	2,617	7,987
HEC "Shemri"	1.000	"Erald Energjitik" shpk	10	426	157	305	247	1,136
HEC "Mgulle"	0.280		10kV	267	224	248	230	968
HEC "Kravezj 1"	0.600	"Bekim Energjitik" shpk	10kV	705	349	572	414	2,041
HEC "Selishte"	2.000	"Selishte" shpk	35kV	1,088	590	923	810	3,412
HEC "Carshove"	1.500		10kV	503	378	593	230	1,703
HEC "Ura e Dashit"	1.200	"ERMA MP" shpk	10kV	1,662	878	1,742	957	5,239
HEC "Gizavesh"	0.500	"Dosku Energy" shpk	10kV	0	0	0	0	0
HEC "Koka 1"	3.200	"Snow Energy" shpk	35kV	907	394	853	645	2,799
HEC "Stravaj"	3.600	"Stravaj Energji" shpk	35kV	2,111	1,223	1,471	1,334	6,139
HEC "Picar 1"	0.200	"Peshku Picar 1" shpk	6kV	55	60	89	67	272
HEC "Vertop"	1.520	"Hydro Salillari Energy" shpk	35kv	310	169	293	262	1,034
HEC "Martanesh"	10.500	"Albanian Power" shpk	35kV	2,951	1,608	3,071	2,151	9,781
HEC "Verba 1,2"	5.000	"Hydro power Plant Of Korea" shpk	35kV	815	390	827	1,394	3,427
HEC "Fterra"	1.080	"HYDROBORSH" shpk	35kV	902	647	956	733	3,238
HEC "Ostren i Vogel"	0.320	"Lu & Co Eco Energy 2011" shpk	10kV	111	107	113	109	440
HEC "Kozel"	0.500		10kV	142	109	114	105	469
HEC "Helmes 1"	0.800	"E.T.H.H." shpk	10kV	426	251	451	248	1,377
HEC "Helmes 2"	0.500		10kV	241	152	232	150	777
HEC "Qafezeze"	0.400	"Caushi -Energji" shpk	10kV	584	541	611	407	2,143
HEC "Trebisht"	1.775	"SA-GLE Kompani" shpk	10kV	616	397	598	579	2,190
HEC "Mollaj"	0.600	"Energji Xhaci" shpk	10kV	143	124	138	67	472
HEC "Tucep"	0.400	"Tucep" shpk	10kV	299	286	292	290	1,167
HEC "Treska4"	3.600		35kV	1,602	1,062	1,671	847	5,180
HEC "Treska3"	0.400	"Hec-Treska" shpk	35kV	197	152	222	134	705
HEC "Treska 21"	0.620		35kV	391	280	426	264	1,361
HEC "Sotire 1 & 2"	2.200	"Hydro Energy Sotira" shpk	35kV	642	347	549	666	2,204
HEC "Shutine"	2.400	"Shutina energji" shpk	10kV	564	345	619	419	1,946
HEC "Cekrez 1,2"	0.660	"Zall Herr Energji 2011" shpk	6kV	416	412	453	350	1,631
HEC "Qarr"	1.000	"Hec Qarr & Kaltani" shpk	35kV	776	581	571	351	2,279
HEC "Bisak"	1.300	"Bardhjana" shpk	6kv	665	432	388	422	1,907
HEC "Shales"	1.080	"Gjoka Konstruktion - Energji" shpk	35kV	60	0	0	129	189
HEC "Strelce"	1.174		35kV	598	336	629	620	2,183
HEC "Shpelle"	0.400	"Sarolli" sh.p.k	10kV	206	109	187	186	688
HEC "Bicaj"	3.100	"En.Ku" sh.p.k	10kV	0	0	0	0	0
HEC "Leskovik 1"	1.072	"Maksi Elektrik" sh.p.k	10kV	44	41	42	39	165
HEC "Leskovik 2"	1.100		10kV	59	57	62	16	194
HEC "Orenje"	0.875	"Juana" sh.p.k	10kV	187	168	149	153	656
HEC "Tamarë"	0.750	"WTS Energji" shpk	10kV	0	0	0	0	0
HEC "Benë"	1.000	"Marjakaj" shpk	6kV	124	153	181	162	619
HEC "Vithkuq" 2		"Favina 1" shpk		0	0	0	0	0
HEC "Vithkuq" 1	2.715		35/10kV	1,418	1,252	1,414	1,024	5,109
HEC "Selca"	1.600	"Selca Energji" shpk	10kV	1,241	1,134	1,259	1,268	4,902
HEC "Kumbull- Merkurth"	0.830	"DN & NAT Energy" shpk	6kV	198	92	212	332	834
HEC "Sasai"	8.600	"Energo - Sas" shpk	35kV	2,865	2,393	3,065	2,532	10,855
HEC "Tervol"	10.600	"Hec i Tervolit" shpk	35kV	4,953	1,637	4,700	3,505	14,795
HEC "Radove"	2.500	"M.T.C. Energy" shpk	10kV	1,293	941	1,434	721	4,389
HEC "Gurshpat 1"	0.840	"Gurshpat Energy" shpk	10kV	703	579	475	439	2,196
HEC "Gurshpat 2"	0.830		10kV	816	525	582	510	2,432
HEC "Bistrica 3"	1.570	"Bistrica 3 Energy" shpk	6kV	917	683	858	748	3,206
HEC "Hurdhas 1"	1.710	Hydropowerplant Construction shpk	6kV	2,349	1,197	1,852	1,869	7,267
HEC "Perrollaj"	0.500	"Fatlum" shpk	10kV	180	49	76	80	385
HEC "Koxheraj"	0.620	"Koxherri Energji" shpk	10kv	252	159	251	210	872
HEC "Kacni"	3.870	"Kisi-Bio-Energji" shpk	20kV	1,066	356	786	826	3,035
HEC "Lena 1"	1.950		35kv					
HEC "Lena 2"	2.300	"Gama Energy" shpk	35kv	1,095	654	1,299	864	3,912
HEC "Lena 2A"	0.250		35kv					

HEC "Driza"	3.408	"Mesopotam Energy" shpk	35kv	462	290	337	253	1,341
HEC Strelca 1,2,3	5.349	"Strelca Energy" shpk	35kv	1,306	835	1,463	1,936	5,540
HEC "Ujanik 2"	2.500	"HP Ujaniku Energy" shpk	35kv	1,035	498	813	752	3,099
HEC "Nishova"	1.260	"Nishova Energy" shpk	35kv	104	88	98	102	391
HEC "Shtika"	1.300	"Perparimi SK" shpk	10kv	397	255	586	382	1,620
HEC "Ballenje"	1.900	"Ballenja Power Martanesh" shpk	35kv	485	233	536	351	1,605
HEC "Gavran 1"	0.998	"Gavran Energy" shpk	35kv	395	225	270	250	1,141
HEC "Gavran 2"	1.215	"Gavran Energy" shpk	35kv	517	291	340	329	1,476
HEC "Kasollet e Selces 1"	4.000	"Xhengo Energji" shpk	35kV	1,179	664	989	1,067	3,898
HEC "Holta Kabash"	2.200	HEC Kabash Porocan shpk	35kV	1,715	866	2,034	1,493	6,109
HEC "Holta Porocan"	3.300		35kV					
HEC "Lusen 1"	0.315	"Eurobiznes" shpk	35kV	102	70	85	75	332
HEC "Ura e Fanit"	1.000	"Ayen As Energji" sha	35kV	499	469	504	550	2,022
HEC "Gorice"	1.747	"THE BLUE STAR" sh.p.k	35kV	901	683	1,084	760	3,428
HEC "Kabash 1&2"	5.800	"Energji Univer" shpk	35kV	1,181	451	859	659	3,149
HEC "Tucep 2"	1.7	"DUKA T2" shpk	35kV	423	380	397	408	1,608
HEC "Dobrenje Tomorrice"	2.4	DAAB Energy Group shpk	35kV	320	265	365	327	1,277
HEC "Razdoli"	0.765	Hidro Vizion shpk (1 pa licens	35kV	189	141	342	296	969
HEC "Dragostunje"	3.1	"HEC-i Dragostunje" shpk	35kV	3,544	952	2,271	2,460	9,228
HEC "Stebleve"	3.4	"PURE ENERGY STEBLEVA" shpk	35kV	469	221	402	339	1,431
HEC "Zerec 1"	0.55	"EnRel Hydro" shpk	35kV	840	619	967	700	3,126
HEC "Zerec 2"	1.315							
HEC "Shëngjon 1"	0.651	"EDIANI" sh.p.k.	35kV	465	243	286	264	1,259
HEC "Shëngjon 2"	0.356							
HEC "Blaç"	1.3	"BLAC ENERGY" sh.p.k	35kV	97	36	114	328	576
HEC "Qarrishtë"	0.3	"IDI-2005" SHPK	35kV	146	79	170	194	589
HEC "Vendresh"	0.456	"HP VENDRESH ENERGY"	35kV	99	59	116	74	348
HEC "Antena"	1.105	"DERBLE" shpk	35kV	493	161	299	331	1,284
HEC "Kamenice"	0.973	HP Kamenica shpk	10kV	507	325	389	290	1,511
HEC "Qytezë"	0.9	Muso Hc Qytezë	10kV	365	274	360	270	1,268
HEC "Marjan Gura e Vesheve"	0.63	Marituda Shpk	10kV	157	87	135	198	577
HEC "Skatine"	2.677	Skatine- Hec Shpk	10kV	1,042	360	612	487	2,502
HEC "Kaparjel"	0.2	ABV Konstruktion Shpk	10kV	36	56	73	59	224
HEC "Letaj"	0.54	Asi-Tre Shpk	10kV	147	77	130	118	473
HEC "Nice"	2.27	MP-HEC Shpk	35kV	283	146	206	129	764
HEC "Meshurdhe"	1.3	SIMA-Com Shpk	10kV	1,144	687	1,010	826	3,667
HEC "Thanex"	2	AFRIMI K Shpk	35kV	1,263	516	845	759	3,383
HEC "OSOJE"	1.9	OSOJA HPP shpk	35kV	1,382	917	1,335	882	4,515
HEC "Voskopoje"	1.9	FAVINA 1 shpk	35kV	1,009	654	910	580	3,153
HEC "Nderfushas"	1.125	"SGD Energy " shpk	35kv	227	108	243	203	780
HEC "Rreshen"	0.38	Nikolli Energy shpk	10kV	143	128	147	164	582
HEC "Gurra"	0.5	Uleza Nderim shpk	6kV	129	115	121	114	479
HEC "Vile"	1.994	Hydro Power Panariti shpk	35kV	925	555	894	478	2,852
HEC "Dukona"	0.800	Dukona shpk	20kV	72	18	103	78	271
HEC "Prevali"	1.750	Gega-G shpk	35kV	1,172	674	1,085	965	3,897
HEC "Camerice"	0.800	Rei Energy shpk	35kV	831	757	826	761	3,175
HEC "Stroc"	2.000	Era Hydro shpk	35kV	1,692	1,003	1,635	1,231	5,561
HEC "Mivas"	1.940	Elva 2001 shpk	35kV	535	473	838	569	2,415
HEC "Spathare"	1.038	Lucente koncensionare shpk	10kV	591	429	177	173	1,371
HEC "Miraka"	0.600	Kuarei Blace shpk	10kV	251	108	135	135	629
HEC "Shengjun"	2.000	Irarba Energji shpk	10kV	373	103	0	317	794
HEC "Dobrunje"	0.840	W.T.S. Energji shpk	10kV	293	349	460	466	1,569
HEC "Muras"	2	Mateo& Co shpk	10kV	1,252	820	1,168	1,208	4,448
HEC "Trojjet"	0.9	Trojjet Energji shpk	10kV	294	364	523	458	1,639
HEC "Deni"	0.85	ASI TRE shpk	35kV	285	112	315	218	931
HEC "Kamican"	1.86	IDI 2005 shpk	35kV	1,110	344	764	723	2,940
HEC "Vardar"	1.972	Gerti shpk	35kV	1,635	1,531	1,597	1,543	6,306
HEC "Stavec"	6.52	Koka Ergi Stavec shpk	35kV	4,610	2,793	4,025	3,485	14,912
HEC "Kalis"	2.138	ERDY Energy shpk	35kV	1,377	990	1,237	1,109	4,713
HEC "Gjinar"	0.83	Erdi Gas shpk	10kV	221	99	162	134	617
HEC "Backa 1"	3.36	Kroi Mbret shpk	35kV	2,397	1,195	2,597	1,732	7,922
HEC "Plepi"	2.28	Domi Tec shpk	35kV	377	218	359	318	1,272
HEC "Zall Xhuxhe 1 &2"	4.7	Hec Zall Xhuxhe shpk	35kV	1,347	469	766	804	3,386
HEC "Pishat"	1.911	GRRENTECH ENERGY SYS	35kV	62	60	55	71	248
HEC "Lingjanca1&2"	2.2	"Rei-Energji"shpk	35kV	959	591	602	432	2,585
HEC "Guri i Ziti"	1.719	"Aris Albania"shpk	35kV	469	182	401	351	1,403
HEC "Drita"	1.98	"Brecani R.O.S.P." shpk	20kV	982	788	1,197	1,202	4,169
HEC "EME"	0.45	"Hec EME" shpk	6kV	263	105	141	119	628
HEC "Terfoje"	1.98	"HEC TERFOJA" sh.p.k	10kV	870	762	948	722	3,302
HEC "Boric Lura 1"	1.8	"AGETA" sh.p.k	20kV	421	176	363	536	1,496
HEC "Mali"	1.49	"TIRANA ENERGI" sh.p.k	20kV	1,247	1,381	1,058	908	4,594
HEC "Shelli"	1.518	"ARIS ALBANIA" SHPK	35kV	826	363	674	364	2,226
HEC "Daznjane"	1.518		35kV	370	10	265	469	1,114
HEC "Vokopola"	2.3	"Vokopola Energji"SHPK	6kV	0	0	0	0	0
HEC "Shutrej 1&2"	1.97	"ATEANI ENERGY" SHPK	6kV	597	153	485	467	1,703
HEC KRONZ	0.43	"LASTER ENERGY" SH.P.K	10kV	188	95	114	100	497
HEC Bushi	0.25	"BUSHI-LUFT" SH.P.K.	10kV	45	16	36	36	132
HEC Tuc				0	604	596	554	1,754
HEC Mireshi				1,148	591	794	719	3,251
HEC Zall-Xhuxhe 2				0	0	0	190	190
	334			140,828	86,917	130,425	114,831	473,001
CENTRAL FOTOVOLTAIK	MW	SUBJEKTI	LIDHJA	JANAR	SHKURT	MARS	PRILL	4-MUJORI
Seman - 2	2	"SEMAN2SUN" sh.p.k	35 kV	215	271	308	345	1,139
Topojë	2	"SONNE" sh.p.k	35 kV	213	269	300	344	1,126
Topojë 2	2	"AED SOLAR" sh.p.k	35 kV	213	268	300	341	1,122
Topojë (Sheq Marinas)	2	"AGE SUNPOWER" sh.p.k	35 kV	212	268	309	342	1,131
Topojë (Sheq Marinas) 2	2	"SEMAN SUNPOWER" sh.p	35 kV	214	271	311	348	1,144
SEMANISOLAR	2	"SEMANISOLAR" sh.p.k	35 kV	227	277	311	347	1,161
ES 2019 sh.p.k	2	ES 2019 sh.p.k	35 kV	244	308	361	387	1,299
SMART WATT sh.p.k	2	SMART WATT sh.p.k	35 kV	248	306	356	381	1,291

Tren Bilisht	2	"RTS" sh.p.k	35 kV	183	268	304	401	1,156
STATKRAFT Renewbles albani PV Llundrues banje	2	"STATKRAFT"	35 kV	46	66	84	72	267
Pv -Plug	2	"AEE" sh.p.k	10 kv	176	237	300	390	1,102
Korca Photovoltaic Park Shpk/920	2	Korca Photovoltaic Park Shpk	35 kV	190	273	307	407	1,177
NTSP Shpk/944	2	NTSP Shpk	35 kV	190	275	306	405	1,177
Sun Beat System Shpk/921	2	Sun Beat System Shpk	35 kV	194	271	304	404	1,174
Tren Sun System Shpk/919	2	Tren Sun System Shpk	35 kV	194	278	309	410	1,191
ERENI SOLAR	2	ERENI SOLAR shpk 35 kv	35 kV	250	348	389	518	1,505
GREEN ENERGY BILISHTI	2	GREEN ENERGY BILISHTI	36 kV	218	318	368	512	1,416
Total				3,427	4,572	5,228	6,353	19,580
EZ-5 Solar Park	10	EZ-5 Solar Park	35 kV	587	782	976	1,130	3,474
EZ-5 Solar Park		EZ-5 Solar Park	35 kV	407	544	690	844	2,485
FV ALBSOLAR	2	"ALBSOLAR" SH.P.K.	35 kV	185	270	295	366	1,116
FV SUN ENERGY SOLUTIONS	2	"SUN ENERGY SOLUTION	35 kV	229	306	368	396	1,298
"2 T & 2 B 1979"sh.p.k.			10 kV	0	487	321	378	1,185
Prodhim i injektuar nga Veteproduhuesit 35 kV. Treg te Parregulluar, PRO FIX/940			35 kV	0	0	19	28	46
Prodhim i injektuar nga Veteproduhuesit 20 kV. Treg te Parregulluar			20 kV	0	0	25	17	42
Zbatim i vendimit te ERE, Nr.19; 20; 21; 22, date 19.02.2024.			35 kV	0	0	3,172	0	3,172
Tot ne treg te lire				1,407	2,389	5,864	3,158	12,818
				4,833	6,961	11,092	9,511	32,397
"KARAVASTA SOLAR" sh.p.k ***	140	Centrali Fotovoltaik me vendndodhje në zonën e Remasit – Karavasta, Lushnjë dhe Libofshë, Fier	220 kV	9,699	15,016	20,684	26,190	71,590
"KESH" sh.a ***	5.143	Central Fotovoltaik i Digës së Qyrasqit, Vau i Dejës	221 kV	368	450	561	717	2,096
	193							
								3,101,518

Kapaciteti Instaluar i gjithe prodhuesve në prodhim **2.815** MW

*** Përshire si sasi energjie në prodhimin neto të KESH sha, sipas kontaktës përkatëse

Burimi: OST sha; KESH sha; OSSH sha; FSHU sha; FTL sha; (OSHEE Group sha)

PUBLIKIM 2024 (MWh) (4-mujori)

Prodhimi Vendas	Janar	Shkurt	Mars	Prill	2024
Prodhimi Neto KESH sha.	461,940	434,525	312,293	230,865	1,439,623
Hec-et Private dhe Konc. (Rrjeti Shperndarjes)	138,715	85,036	128,626	113,003	465,380
Hec-et Private dhe Konc. (Rrjeti Transmetimit)	153,079	86,206	129,837	133,699	502,821
HEC Ashta	29,506	23,646	19,871	15,359	88,382
Prodhimi Neto Hec Lanabregas	2,114	1,880	1,799	1,828	7,621
Prodhimi Neto (Hec Ulez,Shkopet,Bistrica 1,2)	47,623	36,678	34,155	40,512	158,968
Prodhimi Hec Peshqesh	17,478	8,763	13,692	12,207	52,140
Prodhimi Hec Fangu	45,494	23,264	15,108	25,046	108,912
Prodhimi Hec Banja	25,295	20,166	19,747	15,855	81,063
Prodhimi Hec Moglica	55,232	39,392	42,313	25,222	162,159
Prodhimi Hec Qami-1	628	280	624	521	2,053
Prodhimi i Centraleve Fotovoltaike (44 855 FTL +13 743 ne treg te lire)	4,833	6,961	11,092	9,511	32,397
ENERGJIA NETO E PRODHUAR NE SHQIPERI	981,937	766,797	729,157	623,628	3,101,519

ENERGJI NGA INTERKONEKSIONI	Janar	Shkurt	Mars	Prill	2024
Energji ne dhenie nga Interkoneksioni	296,337	260,325	257,566	287,271	1,101,499
Energji ne marrje nga Interkoneksioni	133,112	187,286	214,751	255,012	790,161
Balanca Hyrje/Dalje nga Interkoneksioni	163,225	73,039	42,815	32,259	311,338

KONSUMI I ENERGJISE NE SHQIPERI	Janar	Shkurt	Mars	Prill	2024
Konsumi i klientëve Tarifore	491,096	445,292	397,869	343,696	1,677,953
Konsumi i klientëve të furnizuar si FMF	51,042	47,867	49,561	41,162	189,632
Shtur klienteve si dem ekonomik	438	300	213	129	1,080
Konsumi i Klientëve që përdorin rrjetin për energji e blerë ne treg të liberalizuar	740	3,150	6,363	8,742	18,995
Energji për Klientet ne treg të liberalizuar lidhur në OSSH me furnizues FTL	38,941	33,958	30,710	24,334	127,943
Konsumi për mbulimin e humbjeve	177,293	114,411	134,062	97,092	522,858
Konsumuar nga Klientet e lidhur në OST	36,554	31,249	50,416	58,814	177,033
Konsumuar nga OST (humbje +nevoja vetiake)	22,608	17,520	17,149	17,399	74,676
KONSUMI TOTAL 2024	818,712	693,747	686,343	591,368	2,790,170

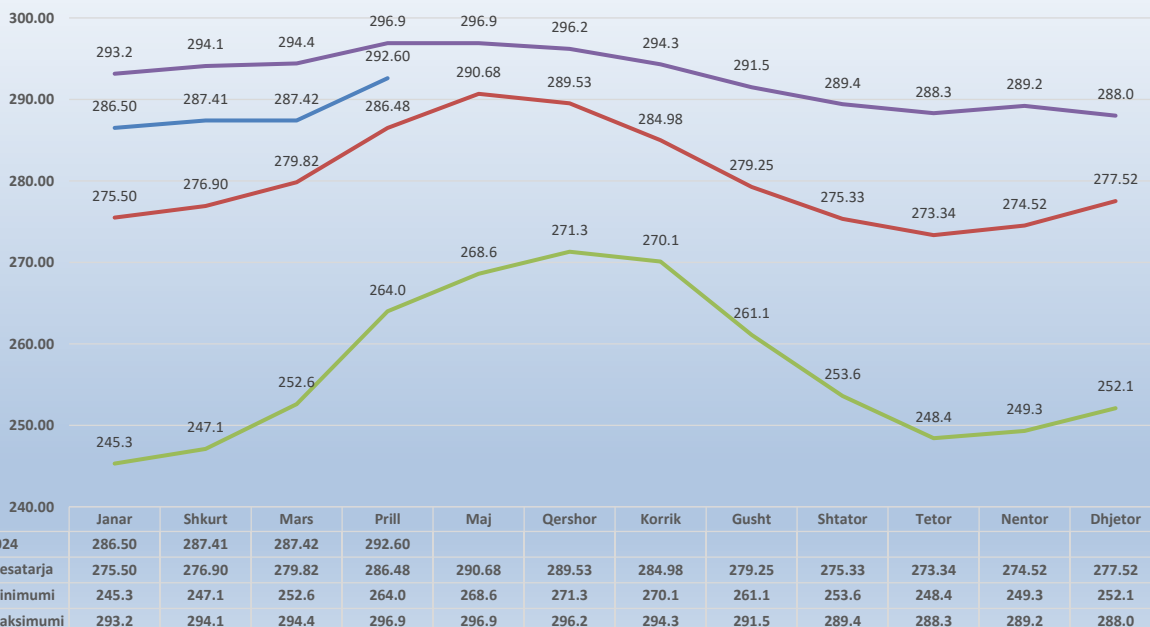
Burimi: OST sha; KESH sha; OSSH sha; FSHU sha; FTL sha; (OSHEE Group sha)

NIVELI I FIERZES 1991-2024

	Janar	Shkurt	Mars	Prill	Maj	Qershor	Korrik	Gusht	Shtator	Tetor	Nentor	Dhjetor
1991	254.4	260.8	268.6	279.9	293.4	296.1	294.0	291.5	289.4	288.3	288.8	285.1
1992	278.0	274.1	268.0	278.8	281.0	279.6	275.2	268.7	263.9	271.4	281.9	280.6
1993	275.2	265.3	264.7	278.5	280.5	277.3	271.0	261.1	253.6	249.9	255.6	270.2
1994	254.4	260.8	268.6	279.9	293.4	296.1	294.0	291.5	289.4	288.3	288.8	285.1
1995	253.8	260.3	262.5	275.3	289.0	288.7	284.5	282.2	288.2	283.8	279.9	287.5
1996	287.1	288.7	286.5	294.7	295.8	293.1	287.6	282.2	285.1	284.3	289.2	291.3
1997	289.4	284.5	281.7	285.2	294.1	292.0	287.0	280.0	272.9	272.4	270.8	277.2
1998	273.7	270.0	265.2	278.9	288.1	287.4	281.8	277.6	276.0	277.1	279.0	277.1
1999	272.7	275.6	281.5	290.5	295.9	293.3	288.3	279.5	271.0	257.6	263.6	276.9
2000	276.4	276.7	276.8	286.9	286.6	280.1	273.5	267.5	261.6	248.4	249.3	252.1
2001	253.6	258.2	275.1	282.9	287.6	283.8	273.7	271.1	269.2	263.6	263.2	252.1
2002	245.3	247.1	252.6	264.0	268.6	271.3	270.1	267.8	274.3	286.1	285.3	284.0
2003	291.1	289.5	286.3	287.0	292.3	290.3	285.9	280.8	276.0	282.6	285.6	283.3
2004	284.7	290.8	293.4	296.0	296.2	296.2	293.1	286.3	281.1	280.0	286.1	288.0
2005	281.2	281.5	293.3	296.1	295.6	294.1	286.7	277.2	266.5	256.9	253.6	279.0
2006	283.5	288.6	294.4	295.9	296.5	295.9	293.8	290.2	285.3	278.7	266.2	256.2
2007	256.1	263.7	272.0	276.8	276.8	274.8	268.5	263.6	261.8	261.1	275.8	282.1
2008	285.1	289.7	290.9	295.5	295.3	295.7	294.3	288.6	283.9	280.9	285.2	286.5
2009	283.6	281.8	283.4	292.5	293.7	292.4	288.0	281.2	276.2	271.6	266.3	280.1
2010	290.1	289.2	293.9	296.0	296.3	294.4	291.8	288.6	284.9	285.2	284.3	287.5
2011	281.6	274.1	275.0	276.6	281.0	286.1	284.7	279.0	273.9	268.2	261.6	264.5
2012	265.8	274.1	262.0	280.2	293.4	294.4	288.4	280.4	261.4	261.6	269.0	276.6
2013	278.3	274.1	294.8	296.9	296.9	294.2	289.7	283.6	280.8	281.4	282.5	276.1
2014	275.1	274.1	274.6	285.3	292.9	294.9	291.7	286.8	285.5	285.0	284.8	286.3
2015	288.7	274.1	292.2	296.3	296.1	293.3	287.5	280.1	272.1	275.4	278.9	275.9
2016	289.9	274.1	291.8	296.5	296.2	295.6	290.5	285.4	283.3	288.4	288.9	281.6
2017	271.5	274.1	280.9	278.7	281.6	272.4	270.2	268.0	271.0	264.6	269.6	289.9
2018	289.7	274.1	295.0	296.5	296.4	296.0	294.0	287.5	277.9	270.2	266.5	267.3
2019	267.3	274.1	272.7	279.9	289.9	292.7	287.6	278.5	274.2	268.6	273.2	275.6
2020	271.6	272.0	283.5	288.6	293.6	291.7	284.6	276.5	273.5	274.1	268.7	272.7
2021	291.7	294.1	292.6	294.3	296.7	291.7	282.7	274.3	271.3	267.7	267.8	275.1
2022	270.7	268.3	260.7	282.5	289.0	288.0	281.5	270.4	271.4	267.9	281.7	291.7
2023	293.2	286.4	291.5	295.6	296.1	296.3	291.4	281.3	270.8	263.5	280.1	284.5
2024	286.5	287.4	287.4	292.6								

	Janar	Shkurt	Mars	Prill	Maj	Qershor	Korrik	Gusht	Shtator	Tetor	Nentor	Dhjetor
2024	286.50	287.41	287.42	292.60								
Mesatarja	275.50	276.90	279.82	286.48	290.68	289.53	284.98	279.25	275.33	273.34	274.52	277.52
Minimumi	245.3	247.1	252.6	264.0	268.6	271.3	270.1	261.1	253.6	248.4	249.3	252.1
Maksimumi	293.2	294.1	294.4	296.9	296.9	296.2	294.3	291.5	289.4	288.3	289.2	288.0

NIVELI I FIERZES GJATE 2024 KRAHESUAR ME (Min,Maks dhe Mesataren historike) (m)

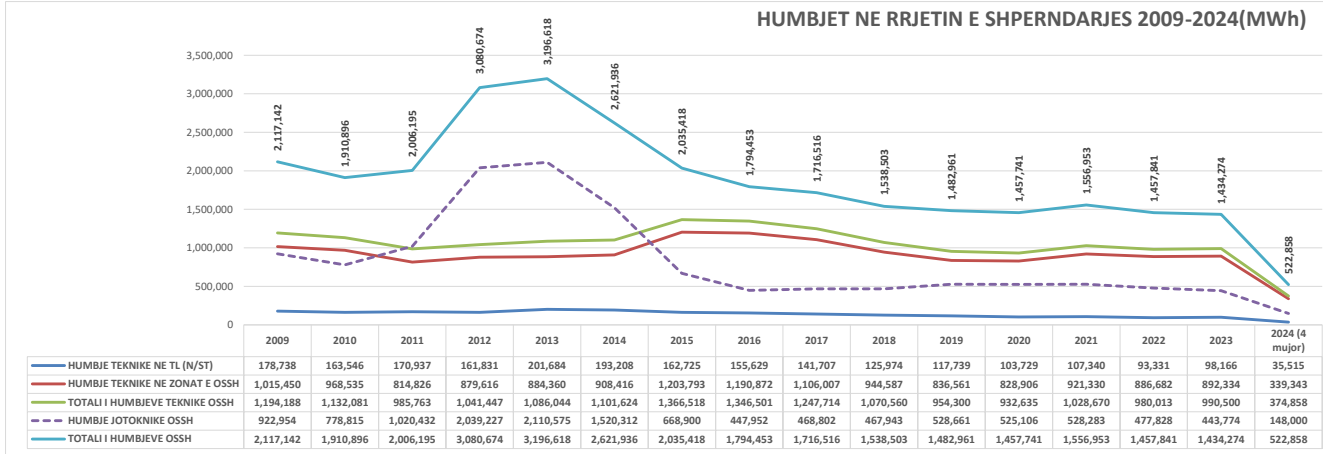


Burimi OST sha

HUMBJET NE RRJETIN E SHPERNDARJES 2009-2024 (MWh)

	2009	2010	2011	2012	2013	2014	2015	2016	2017	2018	2019	2020	2021	2022	2023	2024 (4 mujor)
HUMBJE TEKNIKE NE TL (N/ST)	178,738	163,546	170,937	161,831	201,684	193,208	162,725	155,629	141,707	125,974	117,739	103,729	107,340	93,331	98,166	35,515
HUMBJE TEKNIKE NE ZONAT E OSSH	1,015,450	968,535	814,826	879,616	884,360	908,416	1,203,793	1,190,872	1,106,007	944,587	836,561	828,906	921,330	886,682	892,334	339,343
TOTALI I HUMBJEVE TEKNIKE OSSH	1,194,188	1,132,081	985,763	1,041,447	1,086,044	1,101,624	1,366,518	1,346,501	1,247,714	1,070,560	954,300	932,635	1,028,670	980,013	990,500	374,858
HUMBJE JOTOKNIKE OSSH	922,954	778,815	1,020,432	2,039,227	2,110,575	1,520,312	668,900	447,952	468,802	467,943	528,661	525,106	528,283	477,828	443,774	148,000
TOTALI I HUMBJEVE OSSH	2,117,142	1,910,896	2,006,195	3,080,674	3,196,618	2,621,936	2,035,418	1,794,453	1,716,516	1,538,503	1,482,961	1,457,741	1,556,953	1,457,841	1,434,274	522,858

2023	2024 (3-Mujori)
98,166	28,426



Burimi: OSSH sha / (OSHEE Group sha)

FATURIM-ARKE TIMET DHE NDRYSHIMI I GJENDES DEBITORE GJTE VITIT 2021 (000LEKE)									
Viti 2021	Te arketueshme	Faturuar 2021	arketimi per fakturat e 2021	Arketimi per fakturat e 2007-2020	Arketimi total	Te Arketueshme per energjine e faturuar ne vitin 2021	9=(2-5)	Ndryshimi I gjendjes se Llogarive te arketueshme gjate vitit 2021	Shuarje Detyrimesh
	75,609,639	2	5	7	6=5-7				
Janar	76,272,477	6,400,370	19,639	5,717,893	5,737,532	6,380,731	662,838	0	
Shkurt	76,826,391	6,245,453	3,720,254	1,921,284	5,691,538	2,475,198	553,914	0	
Mars	76,605,803	6,158,373	5,690,524	688,438	6,378,961	467,849	230,588	0	
Prill	76,818,750	5,817,548	5,302,816	301,785	5,604,601	514,732	212,947	0	
Maj	76,122,770	5,190,837	5,558,138	328,680	5,886,818	367,301	695,980	0	
Qershor	75,924,651	5,548,298	5,411,458	328,559	5,740,017	130,840	198,119	0	
Korrrik	76,924,743	6,377,974	5,053,270	324,612	5,377,882	1,324,705	1,000,693	0	
Gusht	77,478,064	6,554,952	5,648,400	353,231	6,001,630	906,552	553,321	0	
Shtator	76,933,233	5,401,032	5,687,762	288,102	5,945,864	286,730	544,832	0	
Tetor	76,284,525	5,544,032	5,739,826	425,913	6,192,739	192,794	648,707	0	
Neutor	76,704,823	5,794,416	5,080,754	293,564	5,374,318	713,662	420,298	0	
Dhjetor	78,394,397	7,572,744	5,583,186	299,984	5,883,170	1,989,557	1,689,574	0	
Total									

FATURIM-ARKE TIMET DHE NDRYSHIMI I GJENDES DEBITORE GJTE VITIT 2022 (000LEKE)									
Viti 2022	Te arketueshme	Faturuar 2022	arketimi per fakturat e 2022	Arketimi per fakturat e 2007-2022	Arketimi total	Te Arketueshme per energjine e faturuar ne vitin 2022	9=(2-5)	Ndryshimi I gjendjes se Llogarive te arketueshme gjate vitit 2022	Shuarje Detyrimesh
	78,394,397	2	5	7	6=5-7				
Janar	79,437,476	7,902,272	4,793,436	2,065,757	6,859,193	3,108,836	1,043,079	0	
Shkurt	80,288,829	7,515,728	4,560,541	2,094,835	6,654,376	2,946,187	851,353	0	
Mars	80,426,273	7,857,071	6,691,413	1,028,214	7,719,627	1,165,658	137,444	0	
Prill	79,617,380	6,531,945	6,531,117	464,721	6,995,838	344,172	808,893	0	
Maj	79,499,359	6,188,383	5,960,488	326,836	6,306,324	218,815	118,823	0	
Qershor	79,997,520	6,553,744	5,610,349	445,234	6,055,583	943,395	498,162	0	
Korrrik	80,005,681	6,553,744	6,230,846	314,737	6,545,583	322,898	8,161	0	
Gusht	79,791,653	7,358,491	7,103,150	469,370	7,572,519	255,341	214,028	0	
Shtator	78,554,734	6,162,925	7,005,112	394,733	7,399,844	843,187	1,236,919	0	
Tetor	77,962,798	5,848,663	6,104,850	335,749	6,440,598	255,187	591,935	0	
Neutor	78,481,014	6,502,315	798,011	5,186,087	5,984,099	5,704,303	518,216	0	
Dhjetor	79,249,438	7,458,986	6,200,688	489,874	6,690,562	1,258,298	768,423	0	
Total		82,089,187			81,234,146				

FATURIM-ARKE TIMET DHE NDRYSHIMI I GJENDES DEBITORE GJTE VITIT 2023 (000LEKE)									
Viti 2023	Te arketueshme	Faturuar 2023	arketimi per fakturat e 2023	Arketimi per fakturat e 2007-2022	Arketimi total	Te Arketueshme per energjine e faturuar ne vitin 2023	9=(2-5)	Ndryshimi I gjendjes se Llogarive te arketueshme gjate vitit 2023	Shuarje Detyrimesh
	79,910,252	2	5	7	6=5-7				
Janar	80,265,490	7,236,860	17,571	6,864,050	6,881,621	7,210,288	352,238	0	
Shkurt	80,928,747	7,477,014	4,674,206	2,139,553	6,813,758	2,802,809	663,256	0	
Mars	80,025,935	6,588,875	6,660,084	831,603	7,491,687	71,209	902,812	0	
Prill	80,223,225	6,321,511	5,757,211	367,010	6,124,221	564,300	197,290	0	
Maj	79,402,801	5,993,172	6,505,113	308,483	6,813,596	511,941	820,424	0	
Qershor	79,665,073	6,074,125	5,550,743	261,110	5,811,853	523,382	262,272	0	
Korrrik	81,307,082	7,326,635	5,416,995	267,632	5,684,626	1,909,640	1,642,009	0	
Gusht	81,148,340	7,281,460	6,976,104	464,097	7,440,201	305,356	158,741	0	
Shtator	80,122,629	6,339,551	6,941,811	423,452	7,365,263	602,259	1,025,711	0	
Tetor	78,896,288	5,987,458	6,799,334	414,465	7,213,799	5,273,992	1,226,341	0	
Neutor	79,489,986	6,806,859	5,995,279	217,882	6,213,161	6,588,977	593,698	0	
Dhjetor	80,898,725	7,990,009	6,461,676	119,594	6,581,270	7,870,415	1,408,739	0	
Total		81,423,530			80,435,057				

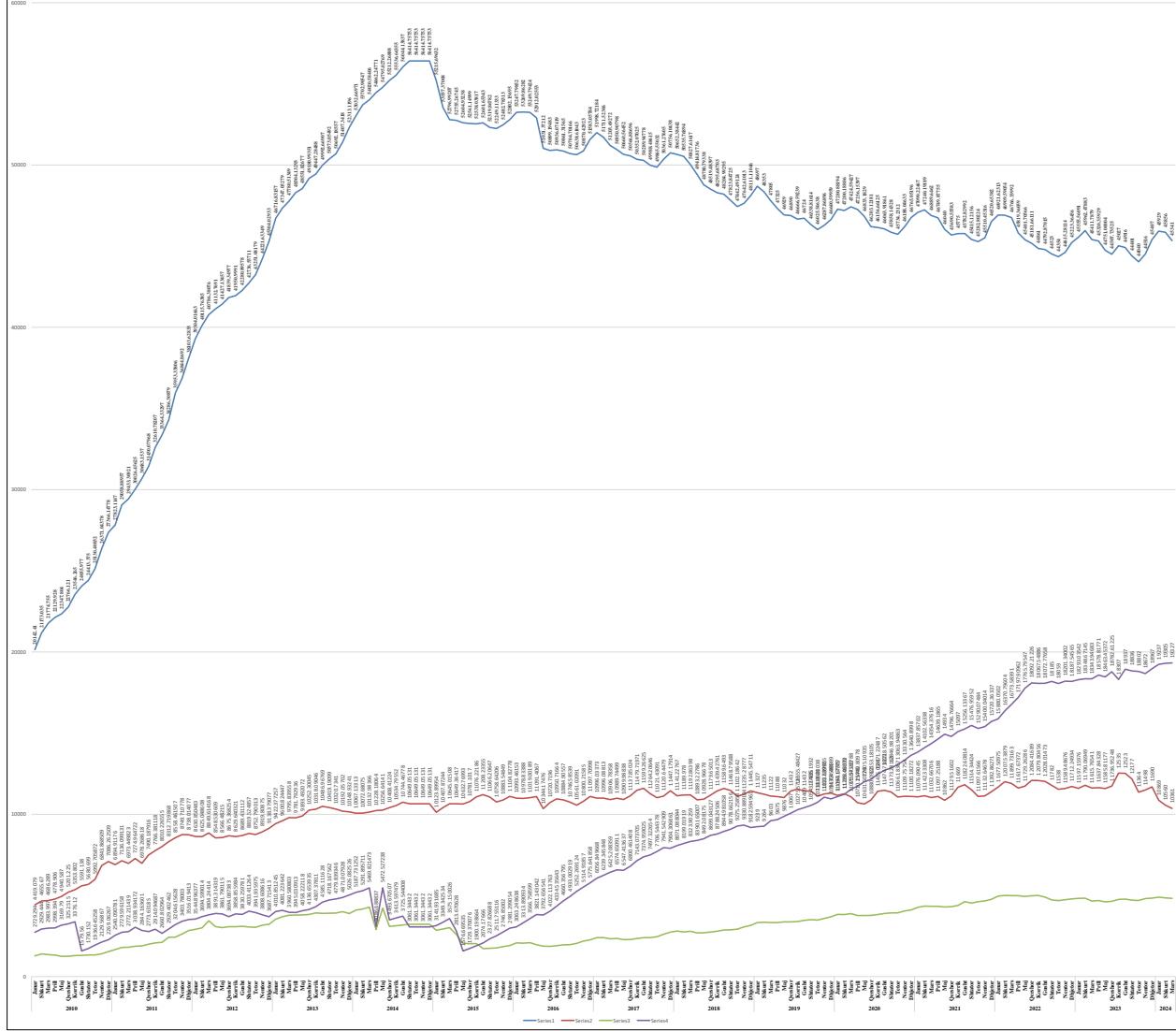
FATURIM-ARKE TIMET DHE NDRYSHIMI I GJENDES DEBITORE GJTE VITIT 2024 (000LEKE)									
Viti 2024	Te arketueshme	Faturuar 2024	arketimi per fakturat e 2024	Arketimi per fakturat e 2007-2022	Arketimi total	Te Arketueshme per energjine e faturuar ne vitin 2024	9=(2-5)	Ndryshimi I gjendjes se Llogarive te arketueshme gjate vitit 2024	Shuarje Detyrimesh
	80,898,725	2	5	7	6=5-7				
Janar	80,868,782	7,374,630	43,814	7,300,873	7,344,687	7,330,816	29,943	0	
Shkurt	80,512,066	6,650,006	4,919,897	2,086,235	7,006,132	1,720,109	356,716	0	
Mars	79,792,096	6,078,325	5,883,823	915,472	6,799,295	195,502	719,970	0	
Prill	78,750,197	5,298,149	5,791,231	548,817	6,340,048	493,082	1,041,899	0	
Maj								0	
Qershor								0	
Korrrik								0	
Gusht								0	
Shtator								0	
Tetor								0	
Neutor								0	
Dhjetor								0	
Total		25,401,110			27,489,752				

Burimi: OSHEE Group sha

ECURIA E GJENDJES DEBITORE NDAJ OPERATORIT TË SHËPËRDARJES SIPAS KATEGORIVE 2010-2024 (000 000 LEKË)

Shprehja	2010	2011	2012	2013	2014	2015	2016	2017	2018	2019	2020	2021	2022	2023	2024
Shprehja	1,278	1,478	1,443	1,813	2,172	2,528	2,878	3,178	3,478	3,778	4,078	4,378	4,678	4,978	5,278
2010	1,278	1,478	1,443	1,813	2,172	2,528	2,878	3,178	3,478	3,778	4,078	4,378	4,678	4,978	5,278
2011	1,478	1,443	1,813	2,172	2,528	2,878	3,178	3,478	3,778	4,078	4,378	4,678	4,978	5,278	5,578
2012	1,443	1,813	2,172	2,528	2,878	3,178	3,478	3,778	4,078	4,378	4,678	4,978	5,278	5,578	5,878
2013	1,813	2,172	2,528	2,878	3,178	3,478	3,778	4,078	4,378	4,678	4,978	5,278	5,578	5,878	6,178
2014	2,172	2,528	2,878	3,178	3,478	3,778	4,078	4,378	4,678	4,978	5,278	5,578	5,878	6,178	6,478
2015	2,528	2,878	3,178	3,478	3,778	4,078	4,378	4,678	4,978	5,278	5,578	5,878	6,178	6,478	6,778
2016	2,878	3,178	3,478	3,778	4,078	4,378	4,678	4,978	5,278	5,578	5,878	6,178	6,478	6,778	7,078
2017	3,178	3,478	3,778	4,078	4,378	4,678	4,978	5,278	5,578	5,878	6,178	6,478	6,778	7,078	7,378
2018	3,478	3,778	4,078	4,378	4,678	4,978	5,278	5,578	5,878	6,178	6,478	6,778	7,078	7,378	7,678
2019	3,778	4,078	4,378	4,678	4,978	5,278	5,578	5,878	6,178	6,478	6,778	7,078	7,378	7,678	7,978
2020	4,078	4,378	4,678	4,978	5,278	5,578	5,878	6,178	6,478	6,778	7,078	7,378	7,678	7,978	8,278
2021	4,378	4,678	4,978	5,278	5,578	5,878	6,178	6,478	6,778	7,078	7,378	7,678	7,978	8,278	8,578
2022	4,678	4,978	5,278	5,578	5,878	6,178	6,478	6,778	7,078	7,378	7,678	7,978	8,278	8,578	8,878
2023	4,978	5,278	5,578	5,878	6,178	6,478	6,778	7,078	7,378	7,678	7,978	8,278	8,578	8,878	9,178
2024	5,278	5,578	5,878	6,178	6,478	6,778	7,078	7,378	7,678	7,978	8,278	8,578	8,878	9,178	9,478

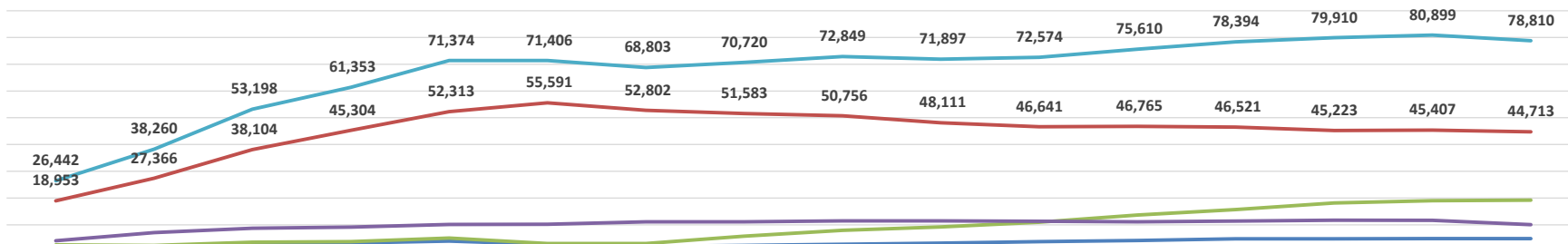
ECURIA E GJENDJES DEBITORE NDAJ OPERATORIT TË SHËPËRDARJES SIPAS KATEGORIVE 2010-2024 (000 000 LEKË)



Buletin FSIH - de / COMEB Group sh

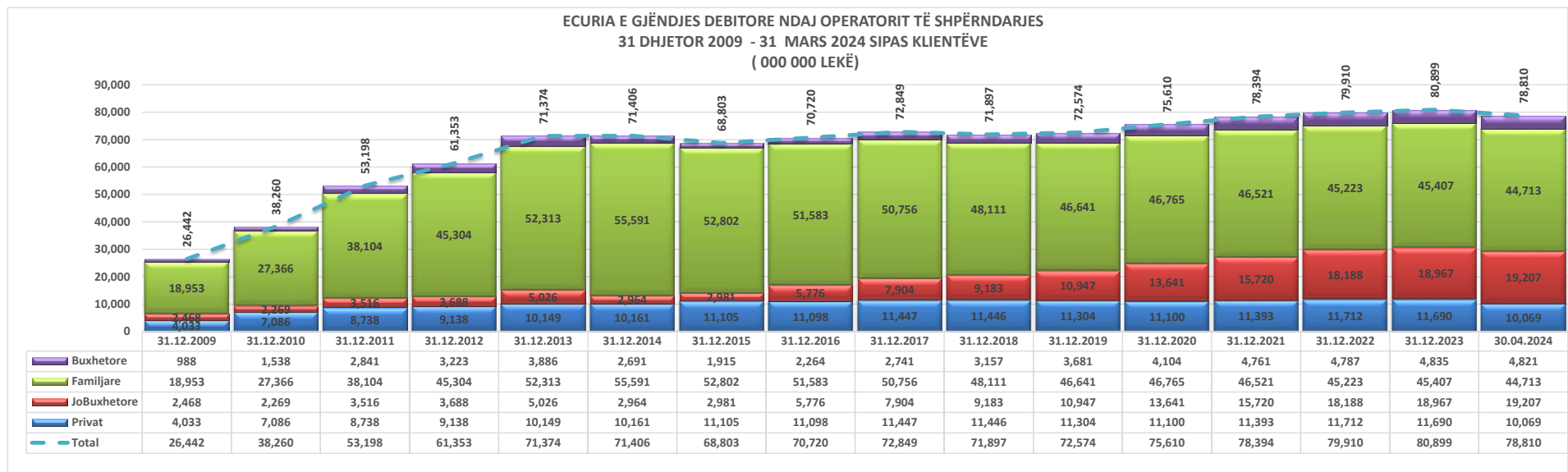
	31.12.2009	31.12.2010	31.12.2011	31.12.2012	31.12.2013	31.12.2014	31.12.2015	31.12.2016	31.12.2017	31.12.2018	31.12.2019	31.12.2020	31.12.2021	31.12.2022	31.12.2023	30.04.2024
Buxhetore	988	1,538	2,841	3,223	3,886	2,691	1,915	2,264	2,741	3,157	3,681	4,104	4,761	4,787	4,835	4,821
Familjare	18,953	27,366	38,104	45,304	52,313	55,591	52,802	51,583	50,756	48,111	46,641	46,765	46,521	45,223	45,407	44,713
JoBuxhetore	2,468	2,269	3,516	3,688	5,026	2,964	2,981	5,776	7,904	9,183	10,947	13,641	15,720	18,188	18,967	19,207
Privat	4,033	7,086	8,738	9,138	10,149	10,161	11,105	11,098	11,447	11,446	11,304	11,100	11,393	11,712	11,690	10,069
Total	26,442	38,260	53,198	61,353	71,374	71,406	68,803	70,720	72,849	71,897	72,574	75,610	78,394	79,910	80,899	78,810

**ECURIA E GJËNDJES DEBITORE NDAJ OPERATORIT TË SHPËRNDARJES
31 DHJETOR 2009 - 31 MARS 2024 SIPAS KLIENTËVE
(000 000 LEKË)**



	31.12.2009	31.12.2010	31.12.2011	31.12.2012	31.12.2013	31.12.2014	31.12.2015	31.12.2016	31.12.2017	31.12.2018	31.12.2019	31.12.2020	31.12.2021	31.12.2022	31.12.2023	30.04.2024
Buxhetore	988	1,538	2,841	3,223	3,886	2,691	1,915	2,264	2,741	3,157	3,681	4,104	4,761	4,787	4,835	4,821
Familjare	18,953	27,366	38,104	45,304	52,313	55,591	52,802	51,583	50,756	48,111	46,641	46,765	46,521	45,223	45,407	44,713
JoBuxhetore	2,468	2,269	3,516	3,688	5,026	2,964	2,981	5,776	7,904	9,183	10,947	13,641	15,720	18,188	18,967	19,207
Privat	4,033	7,086	8,738	9,138	10,149	10,161	11,105	11,098	11,447	11,446	11,304	11,100	11,393	11,712	11,690	10,069
Total	26,442	38,260	53,198	61,353	71,374	71,406	68,803	70,720	72,849	71,897	72,574	75,610	78,394	79,910	80,899	78,810

	31.12.2009	31.12.2010	31.12.2011	31.12.2012	31.12.2013	31.12.2014	31.12.2015	31.12.2016	31.12.2017	31.12.2018	31.12.2019	31.12.2020	31.12.2021	31.12.2022	31.12.2023	30.04.2024
Privat	4,033	7,086	8,738	9,138	10,149	10,161	11,105	11,098	11,447	11,446	11,304	11,100	11,393	11,712	11,690	10,069
JoBuxhetore	2,468	2,269	3,516	3,688	5,026	2,964	2,981	5,776	7,904	9,183	10,947	13,641	15,720	18,188	18,967	19,207
Familjare	18,953	27,366	38,104	45,304	52,313	55,591	52,802	51,583	50,756	48,111	46,641	46,765	46,521	45,223	45,407	44,713
Buxhetore	988	1,538	2,841	3,223	3,886	2,691	1,915	2,264	2,741	3,157	3,681	4,104	4,761	4,787	4,835	4,821
Total	26,442	38,260	53,198	61,353	71,374	71,406	68,803	70,720	72,849	71,897	72,574	75,610	78,394	79,910	80,899	78,810

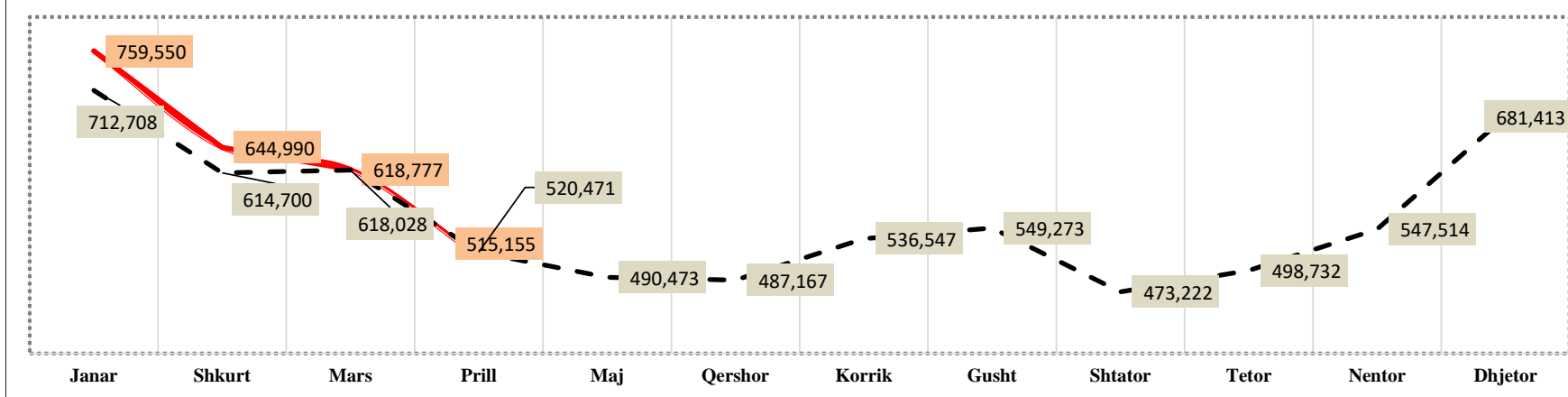


Burimi: FSHU sha / (OSHEE Group sha)

	Janar	Shkurt	Mars	Prill	Maj	Qershor	Korrik	Gusht	Shtator	Tetor	Nentor	Dhjetor	VITI
2009	644,987	568,719	589,279	462,709	448,118	427,694	467,863	493,772	439,604	489,635	557,554	639,797	6,229,731
2010	675,343	608,940	610,583	506,275	476,500	464,120	499,241	512,024	460,893	509,793	532,126	660,665	6,516,503
2011	708,264	623,208	634,087	536,286	533,564	495,139	545,315	567,282	512,979	551,132	619,655	710,870	7,037,781
2012	733,973	680,054	596,982	537,950	483,891	489,723	536,891	540,566	469,527	484,706	548,289	749,398	6,851,949
2013	743,846	665,392	673,578	545,600	502,945	511,390	546,696	565,789	493,056	532,555	589,808	774,403	7,145,060
2014	733,468	631,678	645,837	578,948	541,016	501,088	530,554	556,098	492,427	537,280	546,419	640,431	6,935,244
2015	686,041	591,978	594,775	514,282	472,405	465,730	536,160	529,208	459,012	476,969	519,281	649,026	6,494,867
2016	671,884	559,772	573,419	469,803	477,468	463,248	509,916	514,034	451,153	480,236	540,024	688,760	6,399,717
2017	715,886	562,270	545,214	493,731	475,055	485,386	529,805	543,145	451,103	482,629	546,256	667,841	6,498,322
2018	659,778	590,823	597,595	468,417	467,468	468,885	508,892	539,134	465,468	471,407	517,882	681,162	6,436,911
2019	735,813	586,992	559,331	500,485	501,061	500,729	533,842	565,788	471,684	472,833	507,920	639,953	6,576,432
2020	708,611	607,803	589,581	489,236	464,183	463,789	527,801	533,336	482,358	506,280	562,127	669,977	6,605,082
2021	724,554	629,962	662,183	590,810	504,970	519,563	591,485	603,872	485,288	523,606	552,840	747,790	7,136,936
2022	774,084	656,456	698,991	556,264	504,224	525,509	591,875	587,527	481,886	480,961	536,263	650,564	7,044,604
2023	774,084	656,456	698,991	556,264	504,224	525,509	591,875	587,527	481,886	480,961	536,263	650,564	7,044,604
2024	759,550	644,990	618,777	515,155									

	Janar	Shkurt	Mars	Prill	Maj	Qershor	Korrik	Gusht	Shtator	Tetor	Nentor	Dhjetor
Mesatarja	712,708	614,700	618,028	520,471	490,473	487,167	536,547	549,273	473,222	498,732	547,514	681,413
2024	759,550	644,990	618,777	515,155								

MESATARJA 14 VJEÇARE E ENERGJISË TOTALE NË RRJETIN E SHPËRNDARJES SIPAS MUAJVE TË VITIT (MWh) KRAHASUAR ME VITIN 2024



NIVELI I HUMBJEVE (%) 2009-2024												
	Janar	Shkurt	Mars	Prill	Maj	Qershor	Korrik	Gusht	Shtator	Tetor	Nentor	Dhjetor
2009	40.75	37.05	38.05	32.93	33.44	30.75	32.60	30.20	25.34	30.67	33.44	36.89
2010	38.62	35.41	36.90	31.37	35.17	31.45	26.94	29.69	21.47	20.61	22.16	29.05
2011	55.55	38.00	36.95	23.11	24.85	21.29	21.88	19.41	22.95	25.15	32.20	35.70
2012	35.72	59.16	55.23	45.41	38.87	39.77	45.51	45.51	42.09	35.53	41.89	49.32
2013	51.12	48.71	48.29	39.66	39.52	40.33	43.33	38.50	35.08	45.98	48.08	53.04
2014	47.00	42.14	42.78	35.69	36.85	34.10	36.59	36.36	31.67	34.52	32.88	37.54
2015	36.68	31.82	32.88	30.54	31.24	28.60	30.62	29.29	25.30	29.92	30.82	34.50
2016	34.69	29.00	29.93	26.07	26.97	24.35	25.97	25.15	22.12	27.11	29.30	30.99
2017	33.50	27.63	28.66	25.81	25.88	28.31	24.69	23.29	19.79	23.76	23.55	27.90
2018	30.65	24.91	27.22	23.33	23.03	20.76	21.46	20.77	19.32	21.53	22.73	26.70
2019	29.25	23.21	26.5	21.36	22.10	19.92	20.42	19.81	17.54	20.40	21.58	24.76
2020	28.22	21.61	28.36	17.39	19.10	18.65	19.69	18.87	16.80	21.21	22.79	20.49
2021	27.87	20.1	25.92	21.08	17.92	18.34	18.75	17.93	16.22	18.56	19.88	20.25
2022	28.42	19.66	23.68	18.24	17.08	17.30	18.42	16.81	14.94	18.36	18.38	19.76
2023	25.79	19.06	21.05	18.65	16.68	16.04	17.48	16.17	14.80	17.62	18.20	21.52
2024	21.28	16.80	19.38	16.67								

Niveli i Arketimeve (%) 2009-2024												
	Janar	Shkurt	Mars	Prill	Maj	Qershor	Korrik	Gusht	Shtator	Tetor	Nentor	Dhjetor
2009	69.32	85.95	74.38	86.58	86.31	76.37	75.40	72.46	83.20	80.82	61.77	70.01
2010	55.37	66.28	86.63	89.46	86.70	79.42	74.84	124.98	84.20	70.81	56.15	66.48
2011	67.26	57.61	87.66	71.61	96.73	73.00	65.00	81.00	66.00	63.86	51.47	87.30
2012	59.80	79.20	78.50	78.00	94.70	83.50	91.60	102.90	74.00	98.00	72.60	78.00
2013	61.40	63.70	86.20	80.70	79.10	69.60	87.90	90.10	78.50	84.30	89.00	102.00
2014	84.90	77.10	85.90	85.50	81.90	80.20	86.70	83.60	102.60	101.00	101.90	141.00
2015	112.70	120.50	103.70	86.60	95.70	97.10	98.40	104.70	95.30	100.30	92.20	100.70
2016	92.10	87.00	95.60	90.10	99.10	92.00	94.20	96.70	91.50	96.70	90.30	96.70
2017	85.20	87.60	105.70	94.50	105.70	91.80	104.80	97.40	94.60	103.80	92.70	100.10
2018	96.39	95.69	105.82	98.92	111.64	100.16	105.00	102.12	93.03	108.76	96.24	108.94
2019	90.7	92.6	99.8	102.4	102.50	94.00	104.40	99.30	93.90	104.70	89.60	110.70
2020	91.4	91.6	77.5	106.8	101.80	102.20	96.80	95.30	96.60	101.10	91.50	101.80
2021	86.4	88.9	102.1	91	101.20	110.70	96.90	94.10	90.70	114.70	96.90	101.50
2022	90.6	84.3	102.7	90.5	98.00	97.90	99.90	105.00	100.60	104.50	102.30	102.90
2023	92.3	94.2	100.2	92.9	113.7	95.70	93.60	101.60	101.20	113.80	103.80	96.70
2024	92	95	101.2	104.3								

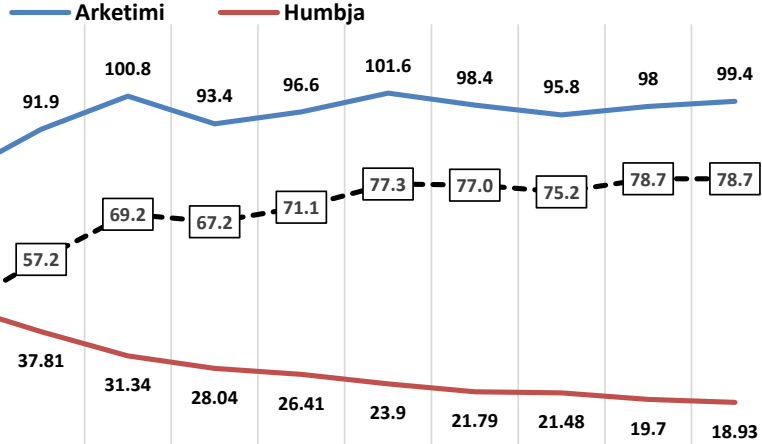
Efektiviteti i shitjeve (%) 2009-2024												
	Janar	Shkurt	Mars	Prill	Maj	Qershor	Korrik	Gusht	Shtator	Tetor	Nentor	Dhjetor
2009	41.1%	46.8%	53.6%	57.9%	50.8%	52.2%	48.8%	50.6%	62.1%	56.0%	41.1%	44.2%
2010	34.0%	56.0%	56.4%	59.5%	51.5%	51.3%	91.3%	87.9%	66.1%	56.2%	43.7%	47.2%
2011	29.9%	54.3%	45.2%	74.4%	54.9%	51.2%	63.3%	65.3%	50.9%	47.8%	34.9%	56.1%
2012	38.4%	32.1%	34.9%	51.7%	51.0%	55.2%	56.1%	56.1%	42.9%	63.2%	42.2%	39.5%
2013	30.0%	44.2%	41.7%	47.7%	42.1%	52.4%	51.1%	55.4%	51.0%	45.5%	46.2%	47.9%
2014	45.0%	49.7%	48.9%	52.7%	50.6%	57.1%	53.0%	53.2%	70.1%	66.1%	68.4%	88.1%
2015	71.4%	69.6%	60.2%	65.8%	69.3%	68.3%	72.6%	74.0%	71.2%	70.3%	63.8%	66.0%
2016	60.2%	67.0%	66.6%	72.4%	69.6%	69.7%	71.6%	72.4%	71.3%	70.5%	63.8%	66.7%
2017	56.7%	75.4%	70.1%	78.3%	65.8%	78.9%	73.4%	74.7%	75.9%	79.1%	70.9%	72.2%
2018	66.8%	77.0%	75.8%	85.9%	79.4%	82.5%	80.2%	80.9%	75.1%	85.3%	74.4%	79.9%
2019	64.2%	73.4%	80.5%	79.8%	75.3%	83.1%	79.0%	79.6%	77.4%	83.3%	70.3%	83.3%
2020	65.6%	55.5%	88.2%	82.4%	83.1%	77.7%	76.5%	77.3%	80.4%	79.7%	70.6%	80.9%
2021	62.3%	75.6%	71.8%	83.1%	90.4%	78.7%	76.5%	77.2%	76.0%	93.4%	77.6%	80.9%
2022	64.9%	78.4%	74.0%	81.3%	81.0%	81.5%	85.7%	87.3%	85.6%	85.3%	83.5%	82.6%
2023	68.5%	76.2%	79.1%	75.6%	94.7%	80.3%	77.2%	85.2%	86.2%	93.7%	84.9%	75.9%

2024	72.4%	79.0%	81.6%	86.9%	0.0%	0.0%	0.0%	0.0%	0.0%	0.0%	0.0%	0.0%
-------------	-------	-------	-------	-------	------	------	------	------	------	------	------	------

	2009	2010	2011	2012	2013	2014	2015	2016	2017	2018	2019	2020	2022	2023	2024
Arketimi	76.4	70.1	70.7	83.0	79.3	91.9	100.8	93.4	96.6	101.6	98.4	95.8	98.0	99.4	97.6
Humbja	34.0	30.4	37.6	46.4	45.0	37.8	31.3	28.0	26.4	23.9	21.8	21.5	19.7	18.9	18.75
Efektiviteti	50.4	48.8	44.1	44.5	43.6	57.2	69.2	67.2	71.1	77.3	77.0	75.2	78.7	80.6	80.6

Efektiviteti i shitjeve ne Sistemin e Shperndarjes (%)

2009-2024



Burimi FSHU (OSHEE Group sha)

Alokimi i Kapaciteteve në interkoniksion 2024

Ankandi	Periudha	Shqipëri - Mali Zi						Shqipëri - Greqi						Shqipëri - Kosove					
		ATC e ofruar ne Ankand		ATC e shitur ne Ankand		Cmimi Ankandit		ATC e ofruar ne Ankand		ATC e shitur ne Ankand		Cmimi Ankandit		ATC e ofruar ne Ankand		ATC e shitur ne Ankand		Cmimi Ankandit	
		Export	Import	Export	Import	Export	Import	Export	Import	Export	Import	Export	Import	Export	Import	Export	Import	Export	Import
		[MW]	[MW]	[MW]	[MW]	[Euro/MWh]	[Euro/MWh]	[MW]	[MW]	[MW]	[MW]	[Euro/MWh]	[Euro/MWh]	[MW]	[MW]	[MW]	[MW]	[Euro/MWh]	[Euro/MWh]
Janar	01.01.2024-31.01.2024	100	100	100	100	2.21	0.94	200	100	200	100	3.5	1	200	200	200	200	0.70	0.35
Shkurt	01.02.2024-29.02.2024	100	100	100	100	0.92	0.6	200	100	200	99	2.46	0.53	200	200	200	200	0.37	0.17
Mars	01.03.2024-31.03.2024	100	100	100	100	1.01	0.51	200	150	200	150	3.99	0.35	150	150	149	150	0.51	0.38
Prill	01.04.2024-30.04.2024	100	100	100	100	1.81	0.86	200	200	200	200	2.88	0.44	150	150	150	150	0.47	0.23

Burimi: OST sha

Disbalancat mujore [MWh] 2024 (4-MUJORI)

Pale Përgjegjëse Balancuese	JANAR		SHKURT		MARS		PRILL		TOTALI 2024	
	Dit. Negative [MWh]	Dit. Pozitive [MWh]	Dit. Negative [MWh]	Dit. Pozitive [MWh]	Dit. Negative [MWh]	Dit. Pozitive [MWh]	Dit. Negative [MWh]	Dit. Pozitive [MWh]	Dit. Negative [MWh]	Dit. Pozitive [MWh]
AbEst Trading							5	57	5	57
AYEN AS ENERGY sh.a	67	111	159	48	139	91	97	151	463	401
Dansko Commodities ne prog	14	70	4	2	13	14	7	3	37	28
DEVOLL HYDROPOWER sh.a	230	40	193	40	65	62	139	47	627	208
DRAGOIA ENERGY sh.a	3	100	6	97	21	353	22	181	53	732
DRAGOIA ENERGY sh.a ne prog					1				1	0
ENER TRADE sh.a	1,144	303	1,003	217	361	284	280	457	3,184	1,264
EZ-S ENERGY shpk (DURESES)	180	145	192	187	409	212	569	176	1,356	721
Furnitueset i Tregut të Linë FTL (OSMEE Grup)	6,223	30,230	2,902	22,413	6,805	21,127	6,158	16,905	22,089	90,675
FUTURE ENERGY ne prog	6	0							6	0
FUTURE ENERGY	999	197	774	72	687	222	857	328	3,317	819
GEN i ne prog	1	1						3	1	4
GSA shpk	1,003	668	325	255	821	370	1,204	2,342	3,153	3,636
KESH Pale Përgjegjëse Balancuese)	2,355	3,297	2,020	3,259	1,921	6,104	1,478	9,304	7,656	21,914
KURUM INTERNATIONAL sh.a	700	21	288	158	1,140	585	1,521	591	3,648	1,855
NDA							330	74	330	74
OST - HUMBJET	2,156	1,291	838	2,864	3,032	1,806	4,112	964	10,139	6,914
KOSTT	2,818	10,278	2,952	8,510	5,482	7,491			11,212	26,793
Reenergy ne program					0	2	0	1	0	2
Ofruesit i Shërbimit të Balancimit	Uje Operative [MWh]	Riije Operative [MWh]	Uje Operative [MWh]	Riije Operative [MWh]	Uje Operative [MWh]	Riije Operative [MWh]	Uje Operative [MWh]	Riije Operative [MWh]	Uje Operative [MWh]	Riije Operative [MWh]
Devoll HP Energia Akt	468		972		1,973		1,804		3,412	0
Devoll HP Energia Shtese Akt									1,804	0
KURUM INTERNATIONAL Energia Akt									0	0
Ayen AS Energji Energia Akt									0	0
Ayen AS Energji Energia Shtese Akt									0	0
MESH sh.a. Energia Akt	13,047	2,089	10,855	1,819	6,148	3,499	5,984	2,015	36,653	9,422
MESH sh.a. Energia Shtese Akt	10,168	2,871	12,553	1,716	11,277	2,825	6,399	3,082	42,664	10,104
TOTALI	42,408	52,201	37,045	41,262	40,500	45,040	31,267	36,685	151,220	175,198
Disbalancat mujore [MWh]		9,793		4,217		4,549	5,418			23,974

Burimi: OST sh.a

KLIENDET NE TL	KLIENDET E "KUALIFIKUAR" PER VITIN 2024				
	Energjia e faturuar ne [MWh]				
	Janar	Shkurt	Mars	Prill	2024
EL220-L220KURUM/337	4,874	4,501	23,996	24,673	58,045
F.ARRES-T3/653	0	-	-	1,464	1,464
Titan T1,T2	9,588	9,037	4,561	8,997	32,183
FUSHE KRUIJE 220kV-T2/058	5,383	707	2,988	9,172	18,251
N/ST 220/6,3Colacent-T1/336	145.3	1,023	1,734	1,746	4,649
N/ST i GSA EL 110kV-T1/694	8,956	8,466	8,959	2,772	29,153
N/ST i GSA EL 110kV-T2/960	-	-	-	-	-
N/ST I CWI Albania T1/148	466	395	531	417	1,809
N/ST i AES EL 110kV-T1/690	159	22	-	2,414	2,594
N/ST I AES EL 110kV-T2/692	-	118	147	60	325
HEC Moglice T1,T2,T3	1.4	1	1	1	4
HEC Peshqesh-T1/633	0.9	9	5	5	20
Lajthiza T1/742	14.4	22	17	27	81
HEC Ashta1-T1,HEC Ashta2-T1,	-	-	0.11	-	0
HEC Banje T1,T2	10.8	12	20	19	62
HEC Fang-T1,T2.	1.300	35	48	25	109
Gjenerim KURUM	1.296	5	16	9	30
FERRO KROM-F1,F2,F3,F4	6,953	6,896	7,392	7,013	28,254
TOTAL	36,554	31,249	50,416	58,814	177,033

Burimi: OST sha

Devijimet nga programi interkoneksionit 2024 (4-mujori)

Data	Minus = Hyrje		Plus = Dalje		Prill	2024
	Janar	Shkurt	Mars			
1	411	-16	394	394	394	1,183
2	462	144	428	428	428	1,462
3	-120	293	139	139	139	451
4	545	378	-250	-117	-117	556
5	375	411	233	363	363	1,382
6	309	49	43	326	326	727
7	739	185	51	592	592	1,567
8	207	-237	24	468	468	462
9	121	354	-267	-9	-9	199
10	-5	46	401	605	605	1,047
11	311	395	126	532	532	1,364
12	183	910	287	242	242	1,622
13	-117	217	364	-132	-132	332
14	61	-41	162	352	352	534
15	65	128	15	131	131	339
16	1299	-59	13	-177	-177	1,076
17	439	-168	0	99	99	370
18	1474	-12	106	101	101	1,669
19	1294	-47	-261	-515	-515	471
20	652	-115	-173	-92	-92	272
21	463	70	77	-444	-444	166
22	148	228	118	542	542	1,036
23	-388	-73	365	129	129	33
24	-2	-306	-5	1195	1195	882
25	154	383	165	1387	1387	2,089
26	265	649	-248	865	865	1,531
27	67	23	574	639	639	1,303
28	282	174	930	414	414	1,800
29	110	255	-432	298	298	231
30	-4		-135	670	670	531
31	-61		153			92
Total	9,739	4,218	3,397	9,425	9,425	26,779

Burimi: OST sha

Transaksionet e energjisë elektrike të Pjestimarrëve të Tregut në [MWh] për 2024

Nr.	Subjekti	Loji transaksionit	Jamar	Shturt	Mars	Prill	Total [MWh]	
1	DEVOLL HP	Shkëmbime Cross-Border	AL-GR Greece - IN	-5,209	-7,436	-12,447	-26,790	-51,842
			AL-KS Kosovo - IN	0	0	0	0	0
			AL-ME Monte Negro - IN	-3,853	-2,671	-3,046	-2,299	-11,829
			Total IN	-9,062	-10,067	-15,493	-29,089	-63,771
			AL-GR Greece - OUT	28,937	23,164	30,424	11,364	90,829
			AL-KS Kosovo - OUT	0	0	0	0	0
		AL-ME Monte Negro - OUT	64,328	47,573	49,103	60,678	221,682	
		Total OUT	96,365	70,737	79,527	72,042	312,566	
		Prodhimi	81,143	60,660	64,034	42,923	248,790	
		Total Prodhimi	81,143	60,660	64,034	42,923	248,790	
		Transaksionet e brendshme	Blerje AYEN Energy Trading					0
		Blerje GEN-I						0
		Shtjje GEN-I						0
Total transaksione	0	0	0	0	0			
2	AYEN Energy Trading	Shkëmbime Cross-Border	AL-GR Greece - IN	0	-2,424	-5,347	-1,409	-9,480
			AL-KS Kosovo - IN	-1,299	0	-12,761	-26,300	-40,360
			AL-ME Monte Negro - IN	0	-618	-5,871	-1,658	-8,096
			Total IN	-1,299	-3,042	-23,981	-28,314	-57,636
			AL-GR Greece - OUT	1,005	0	0	0	1,005
			AL-KS Kosovo - OUT	0	966	240	0	1,206
		AL-ME Monte Negro - OUT	700	5	0	297	992	
		Total OUT	1,288	971	240	297	2,213	
		Prodhimi	-11,394	-10,332	-17,174	-18,164	-57,068	
		Blerje AYEN AS Energi			579.1	7,644	8,224	
		Shtjje Kurum International					0	
		Blerje Kurum International					0	
		Blerje KESH					-750	
		Blerje EZ-S ENERGY					-18.7	
		Blerje EZ-S ENERGY	439	1,883	1,723.1	3,533	7,279	
		Blerje Danske Commodities					0	
		Shtjje Danske Commodities					0	
		Shtjje DEVOLL HP					0	
		Shtjje KESH			88.0		88	
		Blerje GEN-I					-13	
		Shtjje GEN-I					0	
Shtjje NOA ENERGY TRADE		36	400.0	1,171	1,607			
Blerje NOA ENERGY TRADE	-136				-750			
Shtjje SOLE24	11,185	10,784			36,364			
Blerje SOLE24			38,204.0		38,204			
Shtjje FUTURE ENERGY TRADING AND EXCHANGE DYNAMICS					0.0			
Total transaksione	94	2,071	23,741	29,017	54,923			
3	AYEN AS Energi	Shkëmbime Cross-Border	AL-GR Greece - IN	0	0	0	0	0
			AL-KS Kosovo - IN	-274	-1,795	-210	-3,172	-5,441
			AL-ME Monte Negro - IN	-510	-698	-1,669	-479	-3,344
			Total IN	-792	-2,493	-1,879	-3,631	-8,795
			AL-GR Greece - OUT	23,002	11,364	9,211	22,154	65,931
			AL-KS Kosovo - OUT	19,156	9,501	3,129	5,110	37,866
		AL-ME Monte Negro - OUT	9,066	3,301	1,735	2,817	17,819	
		Total OUT	52,324	24,255	14,075	30,281	120,935	
		Prodhimi	62,926.2	32,094.3	28,795.0	37,169.3	160,984.8	
		Total Prodhimi	62,926.2	32,094.3	28,795.0	37,169.3	160,984.8	
		Transaksionet e brendshme	Shtjje AYEN Energy Trading	11,394	10,332	17,174	18,164	57,068
		Blerje AYEN Energy Trading					-8,224	
		Shtjje FUTURE ENERGY TRADING AND EXCHANGE DYNAMICS					0	
Blerje EZ-S ENERGY					0			
Total transaksione	11,394	10,332	16,599	18,164	48,825			
4	ENERGH ASHTA	Shkëmbime Cross-Border	AL-GR Greece - IN					0
			AL-KS Kosovo - IN					0
			AL-ME Monte Negro - IN					0
			Total IN	0	0	0	0	0
			AL-GR Greece - OUT					0
			AL-KS Kosovo - OUT					0
		AL-ME Monte Negro - OUT					0	
		Total OUT	0	0	0	0	0	
		Prodhimi	29,854	23,905	19,068	14,281	87,108	
		Total Prodhimi	29,854	23,905	19,068	14,281	87,108	
Transaksionet e brendshme	Shtjje FTL	29,854	23,905	19,068	14,281	87,108		
Total transaksione	29,854	23,905	19,068	14,281	87,108			
5	GEN-I	Shkëmbime Cross-Border	AL-GR Greece - IN	-4,629	-7,480	-6,814	-14,319	-33,242
			AL-KS Kosovo - IN	4,008	-4,724	-3,997	-4,947	-13,471
			AL-ME Monte Negro - IN	-35,738	-35,760	-34,511	-11,207	-117,803
			Total IN	-48,372	-47,998	-45,262	-38,533	-172,162
			AL-GR Greece - OUT	32,894	41,212	36,865	15,031	126,002
			AL-KS Kosovo - OUT	9,197	550	2,017	4,210	15,980
		AL-ME Monte Negro - OUT	6,340	6,219	6,438	18,038	37,413	
		Total OUT	48,439	47,987	45,320	37,279	179,425	
		Prodhimi					0	
		Blerje ALPEX	-24				-24	
		Shtjje ALPEX		8			8	
		Blerje KURUM	-443				-443	
		Blerje AYEN Energy Trading					0	
Blerje AYEN Energy Trading					13			
Shtjje ENER TRADE				2	14			
Shtjje GSA					0			
Blerje KESH			-1,900	-9,590	-11,490			
Shtjje KESH			1,840	2,814	4,654			
Blerje DEVOLL HP					0			
Shtjje DEVOLL HP					0			
Total transaksione	-467	8	-58	-6,749	-7,266			
6	GSA	Shkëmbime Cross-Border	AL-GR Greece - IN	-1,593	-6,393	-7,587	-7,496	-23,069
			AL-KS Kosovo - IN	-16,313	-10,819	-14,252	-19,977	-61,361
			AL-ME Monte Negro - IN	0	0	0	-2,529	-3,229
			Total IN	-17,906	-17,212	-21,839	-27,002	-84,599
			AL-GR Greece - OUT	3,137	1,671	2,526	1,640	8,974
			AL-KS Kosovo - OUT	1,214	5,609	4,562	5,974	17,359
		AL-ME Monte Negro - OUT	20	62	2,086	3,015	5,183	
		Total OUT	4,371	7,342	9,174	10,629	31,516	
		Prodhimi	13,535	9,879	12,957	15,234	51,596	
		Blerje KESH					813	
		Shtjje KESH					-1,950	
		Blerje ALPEX					4,410	
		Shtjje ALPEX					-1	
Blerje ENER TRADE					1			
Blerje ENER TRADE					0			
Blerje GEN-I					0			
Blerje KURUM					0			
Shtjje KURUM					0			
Total transaksione	13,535	9,879	13,249	18,215	54,869			
7	DANSKE COMMODITIES	Shkëmbime Cross-Border	AL-GR Greece - IN	-13,364	-7,575	-11,398	-20,836	-53,173
			AL-KS Kosovo - IN	-2,347	0	-1,216	-3,962	-7,525
			AL-ME Monte Negro - IN	-23,247	-16,374	-28,336	-11,314	-79,242
			Total IN	-38,958	-23,953	-40,950	-36,119	-140,040
			AL-GR Greece - OUT	13,838	15,639	24,483	12,479	66,439
			AL-KS Kosovo - OUT	19,610	333	4,060	1,600	24,163
		AL-ME Monte Negro - OUT	5,417	7,683	7,489	16,829	36,899	
		Total OUT	38,865	23,640	36,032	29,499	127,496	
		Prodhimi					0	
		Blerje KESH			-2,740.0	-4,500	-7,240.00	
		Shtjje KESH			2,008.0	9,900	11,908.00	
		Blerje AYEN Energy Trading					0.00	
		Shtjje AYEN Energy Trading					0.00	
Blerje ALPEX	-249.8	-574	-161.1	-1,210	-2,194.56			
Shtjje ALPEX	187	1,481	5,922.0	2,514	10,104.04			
Blerje ENER TRADE					0.00			
Shtjje ENER TRADE		7			23.00			
Blerje Rensrgy TR					-112.00			
Shtjje Rensrgy TR					0.00			
Total transaksione	-463	914	4,917	6,704.1	12,277			
8	NOA ENERGY TRADE	Shkëmbime Cross-Border	AL-GR Greece - IN	-58,073	0	0	0	-58,073
			AL-KS Kosovo - IN	-971	0	0	-1,489	-2,460
			AL-ME Monte Negro - IN	-10,628	-687	-1,460	-1,383	-14,158
			Total IN	-69,672	-687	-1,460	-2,922	-74,741
			AL-GR Greece - OUT	23,627	26,534	30,869	29,366	110,395
			AL-KS Kosovo - OUT	98,533	7,064	10,916	22,086	138,581
		AL-ME Monte Negro - OUT	1,078	9,867	8,047	4,177	23,169	
		Total OUT	123,238	43,447	49,831	55,629	272,145	
		Prodhimi					0	
		Shtjje Konsomatereve te Kualifikuar					742	
		Blerje AYEN Energy Trading		-36	-400	-1,471	-1,607	
		Shtjje AYEN Energy Trading	136				750	
		Blerje KESH					-750	

		Transaksionet e brendshme	Shitje KESH			400		400
			Blerje ALPEX					0
			Shitje ALPEX				437	437
			Shitje FTL					0
			Blerje SOLE24	-53,702	-45,505	-72,753	-77,638	-249,598
			Shitje SOLE24					0
			Blerje KURUM					0
			Shitje KURUM		2,781	24,382	24,931	52,694
			Total transaksione	-53,566	-42,760	-48,371	-52,691	-197,396
9	KURUM INTERNATIONAL	Shkembime Cross-Border	AL-GR Greece - IN	0	0	0	0	0
			AL-KS Kosovo - IN	0	0	0	0	0
			AL-ME Monte Negro - IN	0	0	0	0	0
			Total IN	0	0	0	0	0
			AL-GR Greece - OUT	0	0	0	0	0
			AL-KS Kosovo - OUT	0	0	0	0	0
			AL-ME Monte Negro - OUT	0	0	0	0	0
			Total OUT	0	0	0	0	0
		Prodhimi	Prodhim HEC-et	48,108	37,553	34,507	41,274	161,442
			Total Prodhim	48,108	37,553	34,507	41,274	161,442
		Transaksionet e brendshme	Shitje Konsumatoreve te Kualifikuar	5,148	5,645	24,340	24,931	60,064
			Blerje GSA					0
			Shitje GSA					0
			Shitje Ayen Energy Trading					0
			Blerje Ayen Energy Trading					0
			Blerje GEN1					0
			Shitje GEN1	443				443
			Shitje SOLE 24	42,517	34,689	34,549	41,274	153,029
			Shitje NOA Energy Trade					0
			Blerje NOA Energy Trade		-2,781	-24,382	-24,931	-52,694
			Total transaksione	48,108	37,553	34,507	41,274	161,442
10	AXPO ALBANIA	Shkembime Cross-Border	AL-GR Greece - IN	0	0	0	0	0
			AL-KS Kosovo - IN	-2,798	-2,413	0	50	-5,303
			AL-ME Monte Negro - IN	-13,392	-11,778	-7,869	-744	-33,783
			Total IN	16,190	-14,193	-7,869	834	39,688
			AL-GR Greece - OUT	14,685	12,298	7,518	834	35,335
			AL-KS Kosovo - OUT	1,505	1,875	0	0	3,380
			AL-ME Monte Negro - OUT	0	20	351	0	371
			Total OUT	16,190	14,193	7,869	834	39,688
		Transaksionet e brendshme	Total transaksione	0	0	0	0	0
11	EFT (Energy Financing Team) TRANA	Shkembime Cross-Border	AL-GR Greece - IN	-3,814	-2,781	-3,656	-13,276	-23,499
			AL-KS Kosovo - IN	-6,653	-480	0	-2,040	-9,173
			AL-ME Monte Negro - IN	-15,000	-22,827	-21,025	-4,020	-60,282
			Total IN	-25,467	-26,069	-25,591	-23,336	-108,454
			AL-GR Greece - OUT	21,305	23,157	21,514	9,653	75,629
			AL-KS Kosovo - OUT	646	0	0	5,396	6,042
			AL-ME Monte Negro - OUT	2,510	2,803	3,496	8,327	18,342
			Total OUT	25,467	26,069	25,010	23,376	99,913
		Transaksionet e brendshme	Blerje ALPEX			-1	-40	-1
			Shitje ALPEX			582	582	582
			Total transaksione	0	0	581	-40	581
12	ReNRGY	Shkembime Cross-Border	AL-GR Greece - IN	-7,297	-4,053	-5,542	-11,553	-28,443
			AL-KS Kosovo - IN	-3,410	-1,834	-2,920	-217	-8,406
			AL-ME Monte Negro - IN	-15,473	-19,326	-14,260	-5,000	-54,109
			Total IN	-26,176	-24,913	-22,722	-16,843	-96,658
			AL-GR Greece - OUT	17,301	18,699	15,298	5,875	57,173
			AL-KS Kosovo - OUT	5,252	1,064	707	3,600	10,628
			AL-ME Monte Negro - OUT	3,525	2,413	5,758	7,395	17,291
			Total OUT	26,081	22,118	19,763	17,169	85,122
		Transaksionet e brendshme	Shitje ALPEX	95,0	2,829,0	4,434,8	2,586	9,935
			Blerje ALPEX		-82	-4,691,2	-1,827	-3,558
			Blerje KESH					-1,075
			Shitje KESH			112,0		112
			Shitje Danske Commodities Albania			112,0		112
			Total transaksione	95	2,797	2,957	-316	5,524
13	EZ5 ENERGY	Shkembime Cross-Border	AL-GR Greece - IN	0	0	0	0	0
			AL-KS Kosovo - IN	0	0	0	0	0
			AL-ME Monte Negro - IN	0	-12	0	0	-12
			Total IN	0	-12	0	0	-12
			AL-GR Greece - OUT	0	0	0	0	0
			AL-KS Kosovo - OUT	0	0	0	0	0
			AL-ME Monte Negro - OUT	10	8	0	0	18
			Total OUT	10	8	0	0	18
		Prodhimi	Prodhim	980	1,245	1,797	2,010	6,042
			Total Prodhim	980	1,245	1,797	2,010	6,042
		Transaksionet e brendshme	Konsumi	684,86	245,6	3152,31	3308,43	6293,17
			Blerje KESH			-160		-160
			Shitje KESH					0
			Blerje AYEN Energy Trading	-439,2	-1,583	-1,723	-3,533	-7,279
			Shitje AYEN Energy Trading			75	19	93,8
			Blerje AYEN AS ENERGI					0,0
			Blerje ENER TRADE					0,0
			Shitje FTL					0,0
			Blerje SOLE 24			32,00		32,0
			Shitje SOLE 24					32,0
			Blerje ALPEX	-4,80	-59,60	-164,38	-208,08	-436,86
			Shitje ALPEX	728,2	804	526,60	2,424	4,184,13
			Total transaksione	283	-1,107	-1,446	-1,208	-3,566
14	ENSCO Trading	Shkembime Cross-Border	AL-GR Greece - IN	-2,895	-2,292	-2,258	-2,182	-9,627
			AL-KS Kosovo - IN	0	0	0	0	0
			AL-ME Monte Negro - IN	0	0	-70	0	-70
			Total IN	-2,895	-2,292	-2,258	-2,182	-9,627
			AL-GR Greece - OUT	0	0	0	0	0
			AL-KS Kosovo - OUT	0	0	0	0	0
			AL-ME Monte Negro - OUT	2,895	2,292	2,258	2,182	9,627
			Total OUT	2,895	2,292	2,258	2,182	9,627
		Transaksionet e brendshme	Total transaksione	0	0	0	0	0
15	ENER TRADE	Shkembime Cross-Border	AL-GR Greece - IN	-314	-663	-1,213	-4,897	-7,107
			AL-KS Kosovo - IN	-579	0	0	0	-579
			AL-ME Monte Negro - IN	-8,422	-6,691	-3,551	-17,359	-28,938
			Total IN	-9,336	-7,268	-4,764	-22,256	-43,624
			AL-GR Greece - OUT	372	4,621	7,519	14,000	26,712
			AL-KS Kosovo - OUT	13	0	800	6,963	7,776
			AL-ME Monte Negro - OUT	0	260	597	1,350	2,346
			Total OUT	385	4,881	8,916	22,312	36,734
		Prodhimi	Prodhim			3,28		3
		Transaksionet e brendshme	Shitje Konsumatoreve te Kualifikuar	8,746	8,251	4,987	9,951	31,934
			Blerje INFO Telecom sh.p.k.(INFO-TELECOM)					0
			Shitje INFO Telecom sh.p.k.(INFO-TELECOM)					0
			Blerje TRANA INTERNATIONAL DEVELOPMENT sh.a.(TID)					0
			Shitje Danske Commodities Albania					0
			Blerje Danske Commodities Albania		-7		-16	-23
			Shitje EZ-5 ENERGY					0
			Shitje GSA					0
			Shitje FTL					0
			Blerje GEN1			-2,0	-14	-16
			Shitje KESH			400,0	6,040	6,440
			Blerje KESH			-1,600,0	-9,725	-11,325
			Blerje ALPEX	-2	-5,919	-8,727,6	-6,545	-21,193
			Shitje ALPEX	7	62	798,9	216	1,076
			Total transaksione	8,751	2,387	-4,152	39	6,897
16	TRANA INTERNATIONAL DEVELOPMENT sh.a.(TID)	Shkembime Cross-Border	AL-GR Greece - IN	0	0	0	0	0
			AL-KS Kosovo - IN	0	0	0	0	0
			AL-ME Monte Negro - IN	0	0	0	0	0
			Total IN	0	0	0	0	0
			AL-GR Greece - OUT	0	0	0	0	0
			AL-KS Kosovo - OUT	0	0	0	0	0
			AL-ME Monte Negro - OUT	0	0	0	0	0
			Total OUT	0	0	0	0	0
		Transaksionet e brendshme	Blerje Ener Trade					0
			Shitje ENER TRADE					0
			Blerje KESH					0
			Shitje KESH					0
			Blerje INFO Telecom sh.p.k.					0
			Shitje INFO Telecom sh.p.k.					0
			Total transaksione	0	0	0	0	0
17	INFO Telecom sh.p.k.	Shkembime Cross-Border	AL-GR Greece - IN	0	0	0	0	0
			AL-KS Kosovo - IN	0	0	0	0	0
			AL-ME Monte Negro - IN	0	0	0	0	0
			Total IN	0	0	0	0	0
			AL-GR Greece - OUT	0	0	0	0	0
			AL-KS Kosovo - OUT	0	0	0	0	0
			AL-ME Monte Negro - OUT	0	0	0	0	0
			Total OUT	0	0	0	0	0
		Transaksionet e brendshme	Blerje Ener Trade					0

			Shitje Ener Trade						0	
			Shitje FTL						0	
			Blerje KESH						0	
			Blerje TRANA INTERNATIONAL DEVELOPMENT sh.a.(TID)						0	
			Shitje TRANA INTERNATIONAL DEVELOPMENT sh.a.(TID)						0	
			Total transakcione	0	0	0	0	0	0	
18	AIBESP Trading & Consulting shpk (AESP)	Shkembime Cross-Border	AL-GR Greece - IN						0	
			AL-KS Kosovo - IN						0	
			AL-ME Monte Negro - IN						0	
			Total IN	0	0	0	0	0	0	
			AL-GR Greece - OUT						0	
			AL-KS Kosovo - OUT						0	
		AL-ME Monte Negro - OUT						0		
		Total OUT	0	0	0	0	0	0		
		Shitje Konsumentoreve te Kualifikuar					84,63	85		
		Shitje KESH			160	1312	1,372			
		Blerje KESH					-125	-125		
		Blerje FUTURE ENI			-160	-150	-1,40			
Shitje FUTURE ENI					125	125				
Shitje TRANA INTERNATIONAL DEVELOPMENT sh.a.(TID)					0	0				
Total transakcione	0	0	0	0	0	0				
19	ADA Solar SE sh.p.k	Shkembime Cross-Border	AL-GR Greece - IN	-4,199	2,634	-3,425	-5,191	-15,449		
			AL-KS Kosovo - IN	0	0	0	0	0		
			AL-ME Monte Negro - IN	-235	-120	-230	0	-585		
			Total IN	-4,434	-2,784	-3,655	-5,191	-16,034		
			AL-GR Greece - OUT	235	120	230	0	585		
			AL-KS Kosovo - OUT	0	0	0	0	0		
		AL-ME Monte Negro - OUT	4,199	2,634	3,425	5,191	15,449			
		Total OUT	4,434	2,784	3,655	5,191	16,034			
		Total transakcione	0	0	0	0	0			
		20	DRAGOBIA ENERGY	Shkembime Cross-Border	AL-GR Greece - IN					0
					AL-KS Kosovo - IN					0
					AL-ME Monte Negro - IN					0
Total IN	0				0	0	0	0		
AL-GR Greece - OUT								0		
AL-KS Kosovo - OUT								0		
AL-ME Monte Negro - OUT							0			
Total OUT	0			0	0	0	0			
Prodhimi	5,575.25			4,690.15	6,839.7	9,927	27,032.11			
Total Prodhimi	5,575.25			4,690.15	6,839.7	9,927	27,032.11			
Konsumi					419	1,218	1,637			
Total Konsumi					419	1,218	1,637			
Blerje ALPEX			-26.40		-26.40					
Shitje ALPEX			0.99	248.32	249.31					
Shitje FTL	5,575.25	4,690.15	5,951	-8,461	7,755.91					
Total transakcione	5,575.25	14,070	20,443	12,860	7,755.91					
21	Dufero Shqipëri	Shkembime Cross-Border	AL-GR Greece - IN	0	0	0	0	0		
			AL-KS Kosovo - IN	0	0	0	0	0		
			AL-ME Monte Negro - IN	-1	0	0	0	-1		
			Total IN	-1	0	0	0	-1		
			AL-GR Greece - OUT	1	0	0	0	1		
			AL-KS Kosovo - OUT	0	0	0	0	0		
		AL-ME Monte Negro - OUT	0	0	0	0	0			
		Total OUT	1	0	0	0	1			
		Prodhimi					0.00			
		Total Prodhimi	0.0	0.0	0.0	0.0	0.00			
		Shitje FTL	0	0	0	0	0.00			
		Total transakcione	0	0	0	0	0.00			
22	ENERGY 24	Shkembime Cross-Border	AL-GR Greece - IN					0		
			AL-KS Kosovo - IN					0		
			AL-ME Monte Negro - IN					0		
			Total IN	0	0	0	0	0		
			AL-GR Greece - OUT					0		
			AL-KS Kosovo - OUT					0		
		AL-ME Monte Negro - OUT					0			
		Total OUT	0	0	0	0	0			
		Prodhimi					0.00			
		Total Prodhimi	0.0	0.0	0.0	0.0	0.00			
		-					0.00			
		Total transakcione	0	0	0	0	0.00			
23	FUTURE ENERGY TRADING AND EXCHANGE DYNAMICS	Shkembime Cross-Border	AL-GR Greece - IN	0	0	0	0	0		
			AL-KS Kosovo - IN	-4,120	-6,129	-9,793	-11,552	-31,620		
			AL-ME Monte Negro - IN	-2,964	-1,105	-225	-1,075	-4,769		
			Total IN	-4,490	-7,244	-10,018	-12,627	-36,389		
			AL-GR Greece - OUT	162	0	0	0	162		
			AL-KS Kosovo - OUT	25	0	2	0	27		
		AL-ME Monte Negro - OUT	0	0	0	0	0			
		Total OUT	187	0	2	0	189			
		Shitje Konsumentoreve te Kualifikuar	6,309	7,042	8,869.4	12,168	24,388			
		Blerje ALPEX		-87	-465.4	-593	-1,145			
		Shitje ALPEX		209	1,451.9	20	1,761			
		Shitje Aven Energy Trading					0			
Blerje Aven Energy Trading					-125					
Blerje AIBESP Trading					1,307					
Shitje AIBESP Trading		160.0			1,467					
Blerje KESH					-350					
Shitje KESH					210					
Shitje Aven AS Energy					0					
Blerje Aven AS Energy					0					
Total transakcione	6,309	7,244	10,016	12,637	36,206					
24	PROINFINT CONSULTING	Shkembime Cross-Border	AL-GR Greece - IN					0		
			AL-KS Kosovo - IN					0		
			AL-ME Monte Negro - IN					0		
			Total IN	0	0	0	0	0		
			AL-GR Greece - OUT					0		
			AL-KS Kosovo - OUT					0		
		AL-ME Monte Negro - OUT					0			
		Total OUT	0	0	0	0	0			
		Blerje FUTURE ENERGY TRADING AND EXCHANGE DYNAMICS					0			
		Shitje AIBESP Trading			160		160			
		Shitje FTL					0			
		Blerje ALPEX			-465		-465			
Shitje ALPEX			1,452		1,452					
Shitje KESH					0					
Total transakcione	0	0	1,147	0	1,147					
25	SOLE24 DOOEL SHKUP DEGA NE SHQIPËRI	Shkembime Cross-Border	AL-GR Greece - IN					0		
			AL-KS Kosovo - IN					0		
			AL-ME Monte Negro - IN					0		
			Total IN	0	0	0	0	0		
			AL-GR Greece - OUT					0		
			AL-KS Kosovo - OUT					0		
		AL-ME Monte Negro - OUT					0			
		Total OUT	0	0	0	0	0			
		Blerje AVEN ENERGY	-11,185	-10,784	-38,204	-36,364	-96,537			
		Shitje AVEN ENERGY					0			
		Blerje EZ-S		-32			-32			
		Shitje EZ-S					0			
Blerje KURUM	-42,517	-34,689	-34,549	-41,274	-153,029					
Blerje NOA ENERGY TRADE					0					
Shitje NOA ENERGY TRADE	53,702	45,505	72,753	77,638	249,598					
Total transakcione	0	0	0	0	0					
26	KESH sh.a.	Shkembime Cross-Border	AL-GR Greece - IN	0	0	0	0	0		
			AL-KS Kosovo - IN	-750	-6,731	-12,880	-2,645	-23,006		
			AL-ME Monte Negro - IN	0	0	-2,816	-3,320	-6,136		
			Total IN	-750	-6,731	-15,776	-5,965	-29,222		
			AL-GR Greece - OUT	0	0	0	0	0		
			AL-KS Kosovo - OUT	6,320	0	0	225	6,545		
		AL-ME Monte Negro - OUT	0	0	0	850	850			
		Total OUT	6,320	0	0	1,075	7,395			
		Shitje FTL	403,231	406,089	285,892	199,754	1,294,966			
		Blerje Aven Energy Trading			-88	750	750			
		Shitje Aven Energy Trading					0			
		Blerje Danske Commodities			-2,008	-9,900	-11,908			
Shitje Danske Commodities			2,740	4,500	7,240					
Blerje GSA				4,410	4,410					
Shitje GSA				1,950	1,950					
Blerje RENRGY			-112		-112					
Shitje RENRGY				1,075	1,075					
Blerje GENI			-1,840	-2,814	-4,654					
Shitje GENI			1,900	9,200	11,090					
Blerje Tirana International Development					0					
Shitje Tirana International Development					100					
Shitje EZ-S ENERGY					-400					
Blerje NOA ENERGY			-400		-400					
Shitje NOA ENERGY				750	750					

SHIT-BLERJET E ENERGJISË ELEKTRIKE ME PROCEDURË NË TREG TË LIBERALIZUAR NGA KESH sh.a

		Blerja				
	Shoqëritë	Sasia (MWh)	EUR/MWh	Vlera	TVSH	Vlera me TVSH
Mars 2024	NOA Energy Trade sh.p.k.	400	53.1	21244	4248.8	25492.8
	GEN-I Tirana sh.p.k.	1840	45.2	83176	16635.2	99811.2
	Renrgy Trading Group sh.p.k.	112	42.9	4802.56	960.512	5763.072
	Danske Commodities Albania sh.p.k.	2008	48.1	96655.52	19331.104	115986.624
	Ayen Energy Trading sh.a.	88	54.4	4782.8	956.56	5739.36
	Fuente Dynamics sh.p.k. /Kosove	160	42.8	6840.8		6840.8
	Ener Trade sh.p.k	400	40.1	16040	3208	19248
	AlbEsp Trading&Consulting	160	39.5	6315.2	1263.04	7578.24
	Axpo d.o.o Beograd	432	54.8	23652	0	23652
	HSE d.oo	2464	45.8	112900.8		112900.8
Totali		8064	46.68	376409.68	46603.22	423012.90

		Blerja				
	Shoqëritë	Sasia (MWh)	EUR/MWh	Vlera	TVSH	Vlera me TVSH
Prill 2024	AlbEsp Trading & Consulting sh.p.k.	1212	38.6	46782.32	9356.46	56138.78
	Danske Commodities Albania sh.p.k.	9900	45.2	447876	89575.20	537451.20
	Ener Trade sh.p.k.	6040	51.8	312764	62552.80	375316.80
	Fuente Dynamics	300	41.5	12444	2488.80	14932.80
	Fuente Dynamics Tiranë	210	36.8	7717.5	1543.50	9261.00
	GEN-I Tirana sh.p.k.	2814	39.6	111552	22310.40	133862.40
	GSA shpk	4410	36.1	159303.9	31860.78	191164.68
	HSE d.o.o.	3320	38.6	128166.2	25633.24	153799.44
	Totali		28,206.00	43.49	1,226,605.92	245,321.18

		Shitje				
	Shoqëritë	Sasia (MWh)	EUR/MWh	Vlera	TVSH	Vlera me TVSH
Mars 2024	Ener Trade sh.p.k	1,600	71.40	114,240.00	22,848.00	137,088.00
	Danske Commodities Albania sh.p.k.	2,740	65.50	179,463.20	35,892.64	215,355.84
	EZ-5 ENERGY sh.p.k	160	70.06	11,209.60	-	11,209.60
	Gen-I	1,900	71.79	136,406.00	27,281.20	163,687.20
	Totali		6400	68.96	441,318.80	86,021.84

		Shitje				
	Shoqëritë	Sasia (MWh)	EUR/MWh	Vlera	TVSH	Vlera me TVSH
Prill 2024	AlbEsp Trading & Consulting sh.p.k.	125	83.06	10,383	2,077	12,459
	Ayen Energy Trading sh.a.	750	58.15	43,613	8,723	52,335
	Danske Commodities Albania sh.p.k.	4,500	77.71	349,695	69,939	419,634
	Ener Trade sh.p.k.	9,725	78.98	768,075	153,615	921,690
	Fuente Dynamics	100	58.33	5,833	1,167	7,000
	Fuente Dnamicos Tiranë	350	86.06	30,122	6,024	36,146
	GEN-I Tirana sh.p.k.	9,590	75.24	721,552	144,310	865,862
	GSA shpk	1,950	95.56	186,350	37,270	223,619
	HSE d.o.o.	850	79.53	67,600	13,520	81,120
	Infinitt Power Solution sh.p.k.	125	90.99	11,374	2,275	13,649
	NOA Energy Trade sh.p.k.	750	60.15	45,113	9,023	54,135
	Renrgy Trading Group sh.p.k.	1,075	63.69	68,466	13,693	82,160
Totali		29,890.00	77.22	2,308,173.00	461,634.60	2,769,807.60

